

SOUTHEASTERN UNIVERSITY



SEU Fact Book | 2013–2014



Transforming minds. Engaging culture.



SOUTHEASTERN UNIVERSITY

Office of Institutional Effectiveness

Published October 2013 by

Southeastern University
Office of Institutional Effectiveness
1000 Longfellow Boulevard
Lakeland, FL 33801

Dr. Andrew H. Permenter, Associate Provost, Dean IR
ahpermenter@seu.edu

Mr. Andrew E. Miller, Executive Director, Institutional Effectiveness & Online Learning
aemiller@seu.edu

Mr. Keith A. Kelso, Assistant Director, Research & Reporting
kkelso@seu.edu

Copyright © 2013 Southeastern University

Table of Contents

Board of Trustees	1
Mission & Vision	3
Strategic Plan	4
History of Southeastern	5
Points of Excellence	7
News from the Alumni Association	8
Accreditation	9
Institutional Memberships	10
Organizational Charts	11
Athletics	19
Clubs & Organizations	21
Library & Computer Resources	22
Tuition & Fees	23
Tuition, Room, & Board Comparison	27
Financial Aid - Entering Freshmen	29
Academic Programs	31
Enrollment Summary	35

Enrollment by Major	37
Total Enrollment, 2004-2013	41
Full-Time Equivalency Enrollment, 2004-2013	43
Enrollment by Gender, 2004-2013	45
Enrollment by Race & Ethnicity, 2007-2013	47
Enrollment by State or US Territory	49
International Enrollment	51
Enrollment by Denomination	53
Enrollment by AG District	55
Faculty Division & Rank	57
Instructional Faculty, 2009-2013	59
Instructional Faculty Demographics	61
Faculty & Staff	63
Applications for Freshman Admission	65
SAT, ACT, & GPA - Entering Freshmen	67
Completions	69
Retention & Graduation Rates	73
Campus Housing	75
Housing Capacity	77

Board of Trustees

Rev. Terry Raburn, Chairman

Rev. M. Wayne Blackburn, Vice Chairman

Rev. John Jordan, Secretary

Dr. Kent Ingle, University President

Pastor Tommy Barnett, University Chancellor

Rev. Abner Adorno

Rev. Mark Anthony

Rev. Terry Bailey

Rev. Mark Batterson

Mrs. Jennifer Closshey

Rev. Richard Collins

Rev. David W. Dillon

Rev. Kenneth Draughon

Mr. Dave Fader

Rev. Edward Hawkins

Rev. Mark Jakelsky

Rev. Steve Mason

Rev. Tommy Moore

Mr. Bill Mutz

Rev. Terry Roberts

Rev. Victor Smith

Rev. Randy Valimont

Rev. Doug Witherup

Rev. Max Yeary



Mission Statement

Equipping students to discover and develop their divine design to serve Christ and the world through Spirit-empowered life, learning, and leadership.

Vision Statement

Southeastern University is anchored by Spirit-empowered education in a Christ-centered, student-focused learning community. Southeastern's global impact is marked by a deep commitment to transforming minds and engaging culture through the integration of faith, learning, and service. Each student's divine design is nurtured and unleashed through the investment of faculty and staff, relationships within the community, the rigor of scholarship, diverse learning experiences, and the discipline of spiritual formation, which propels students into a lifetime of serving the world in the Spirit of Christ.



Strategic Plan

Our Core Values

1. A university absolutely committed to Christ-like formation.
2. A university of educational breadth and depth.
3. A university of faculty distinction.
4. A university that thinks globally.
5. A university committed to serving human need in our community and in communities around the world.
6. A university characterized as a community of grace.
7. A university that is student-focused at all times.

Our Five-Year Plan

To create a university of curricular and co-curricular excellence with a faculty of distinction, diverse student population, strong financial base, and a culture of high performance and quality.

Source: Southeastern University 2012-2017 Strategic Plan



History of Southeastern University

Southeastern University was founded in 1935 by Alabama District Superintendent J. C. Thames and other Southeastern District leaders. Originally named the Alabama Shield of Faith Institute, in 1936 it was renamed the South-Eastern Bible Institute. Guy Shields was the first president.

Originally located in a former high school building in New Brockton, Alabama, the school opened its doors to students on November 4, 1935, under the direction of four faculty members. Two years later, on May 22, 1937, the first graduation exercises were held. Seventeen students received diplomas for the two-year academic program.

SEBI continued classes in New Brockton until 1940 when a decision was made to consolidate the school with Beulah Heights Bible Institute in Atlanta, Georgia. The school was known from 1940 to 1942 as the Beulah Heights—South-Eastern Bible Institute. In the fall of 1942, Rev. Ralph Byrd allowed the school to relocate to his congregation at 301-7 Capital Avenue, SW in Atlanta where it then was again named the South-Eastern Bible Institute.

In 1946, the Board of Directors voted to secure a permanent location for the full development of the school. A new campus location was purchased later that year in Lakeland, Florida. The Atlanta



campus was sold and development of the new site was begun. From 1946 to 1952, SEBI was located at the Lodwick School of Aeronautics in Lakeland. In 1952, the school moved to its present location at Longfellow Boulevard.

Student body growth continued at the new central Florida campus along with the academic program. SEBI became South-Eastern Bible College in 1956 when four-year Bachelor of Arts degree programs were begun. After adding education degrees, the College Board of Directors changed the school name to Southeastern College of the Assemblies of God in 1977.

In 1986, Southeastern was granted regional accreditation by the Southern Association of Colleges and Schools Commission on Colleges. Accreditation was reaffirmed in 1991, 2001, and 2011. In 2005, Southeastern College officially became Southeastern University, began offering its first Master's Degree programs, and formed the Colleges of Arts & Sciences, Business, Christian Ministries & Religion, and Education.

What began in 1935 as a Bible-training school is now the largest Assemblies of God educational institution in America, producing future Christian leaders in the fields of church ministries, education, medicine, law, business, communication, psychology, social work, literature, and music.



Points of Excellence

New Programs and Accreditation

- SEU launched an RN-to-BSN (Bridge) Nursing program this Fall and will launch a four-year BSN in Fall 2014. The Nursing Programs have already received accreditation approval from our regional accreditor, The Southern Association of Colleges and Schools Commission on Colleges (SACSCOC) as well as national accreditation through the Commission on Collegiate Nursing Education (CCNE).
- SEU received approval to offer doctoral degrees (Level V) from SACSCOC. Our first doctoral degree, a Doctor of Education, will be launched in Summer 2014.

US News Rankings: SEU was again ranked among the “Best Colleges, Southern Region” on the annual US News Best Colleges report. SEU ranked 36th out of 104 schools in our region.

Enrollment Growth: SEU has experienced phenomenal enrollment growth over the last two years, from 2,500 students in Fall 2011 to over 3,400 today! Compared to last year, we have:

- Over 700 more total students
- Over 200 more traditional students
- Over 200 more dual-enrolled students
- Nearly 200 new extension site students
- 100 more graduate students
- Nearly 300 more in our freshman cohort

Campus Growth: SEU is breaking ground on two new buildings this November: A new state-of-the-art Health Sciences Building and a new Football Stadium. Both structures are scheduled to be completed by Fall 2014.



News From the Alumni Association

Regional & Homecoming Reunions: Over the past year we have had Regional Reunions in Atlanta, Dallas, and Charlotte. Our Homecoming Reunion in the fall of 2012 included over 400 alumni.

Antique Alumni: The Alumni Association had a special chapel with a panel featuring our graduates from the late 50's and early 60's classes, followed by a luncheon.

Outstanding Alumni Accomplishments:

Caleb Kinchlow '09 recently received an Emmy Award for his NASA360 show.

Taylor Wilkerson '13 was accepted into Princeton University where he will study theology.

Amanda Gross '05 is now the Associate Producer at Daystar Television Network.

Tomas Lares '94 is the Founder and President of Florida Abolitionist, an anti-human-trafficking organization which rescued over 147 victims this year.

Nik Brokas '10 & '13 was hired by Lockheed Martin after earning his MBA from Southeastern.



Accreditation

Southeastern University is accredited by the **Southern Association of Colleges and Schools Commission on Colleges** to award associate, baccalaureate, masters, and doctorate degrees. Contact the Commission on Colleges at 1866 Southern Lane, Decatur, GA 30033-4097 or call 404-679-4500 for questions about the accreditation of Southeastern University.

Other discipline-specific accreditations and licensures:

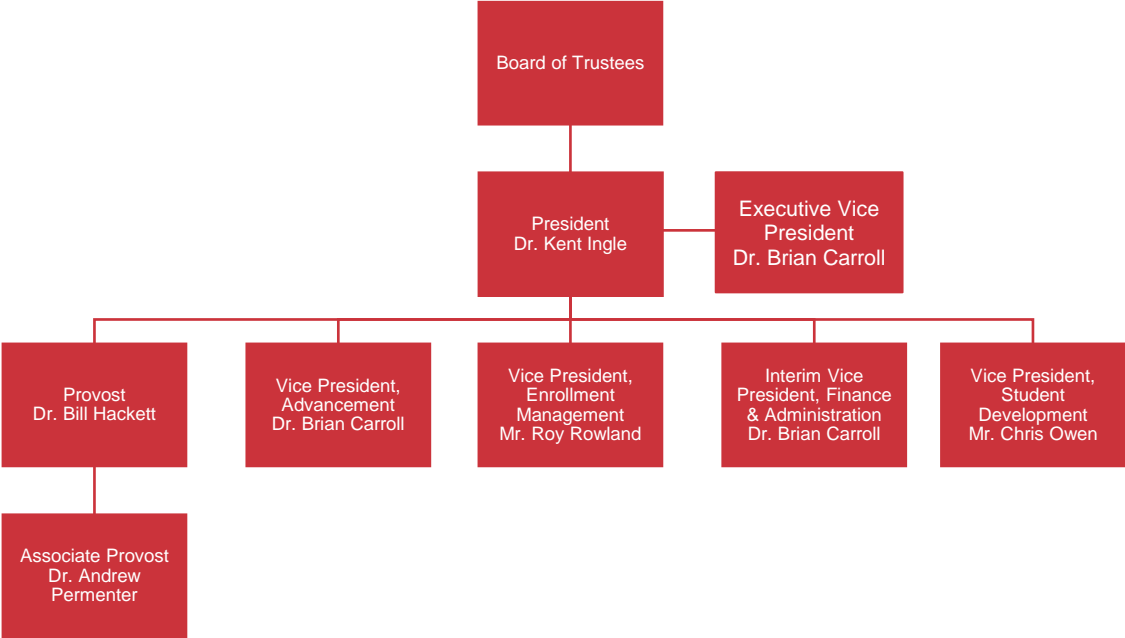
- Council on Social Work Education (CSWE)
- International Assembly for Collegiate Business Education (IACBE)
- Florida Department of Education (FLDOE) - *Southeastern University is approved to grant degrees that meet certification requirements for a Florida teaching credential.*



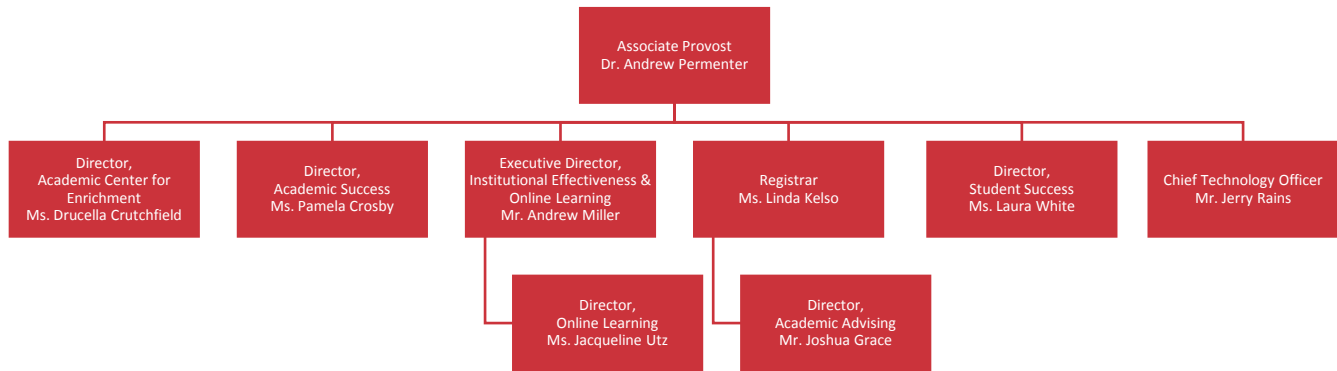
Institutional Memberships

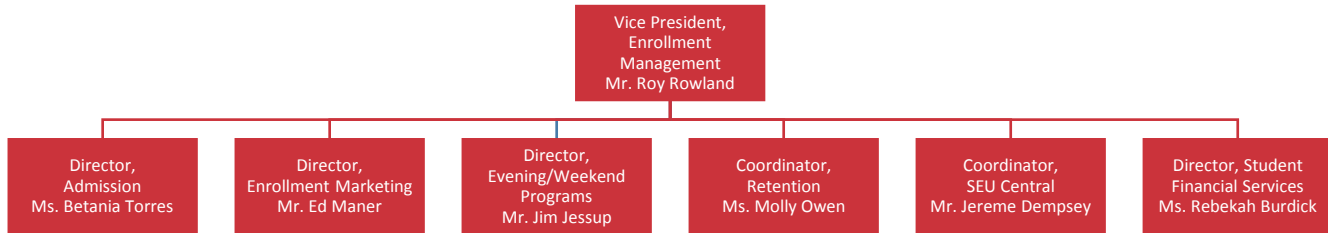
- o American Association of Collegiate Registrars and Admissions Officers (AACRAO)
- o American Society of Composers, Authors, and Publishers (ASCAP)
- o Association to Advance Collegiate Schools of Business (AACSB International)
- o The Alliance for Assemblies of God Higher Education (The Alliance)
- o Commission on Colleges of the Southern Association of College and Schools (COC)
- o Florida Association of Colleges for Teacher Education (FACTE)
- o National Association of Independent Colleges and Universities (NAICU)
- o Association of American Colleges and Universities (AAC&U)
- o Association of Christian Schools International (ACSI)
- o Association of Departments of English
- o Association for General and Liberal Studies (AGLS)
- o Association of Institutional Research (AIR)
- o Broadcast Music, Inc. (BMI)
- o Council for Christian Colleges and Universities (CCCCU)
- o Council of Colleges of Arts and Sciences (CCAS)
- o Council of Independent Colleges (CIC)
- o Council on Higher Education Accreditation (CHEA)
- o Florida Association for Institutional Research (FAIR)
- o Florida League of Christian Schools (FLOCS)
- o Independent Colleges and Universities of Florida (ICUF)
- o National Association of Intercollegiate Athletes (NAIA)
- o National Christian College Athletic Association (NCCAA)
- o National Collegiate Honors Council (NCHC)
- o Polk Arts Alliance
- o Southern Association for Institutional Research (SAIR)

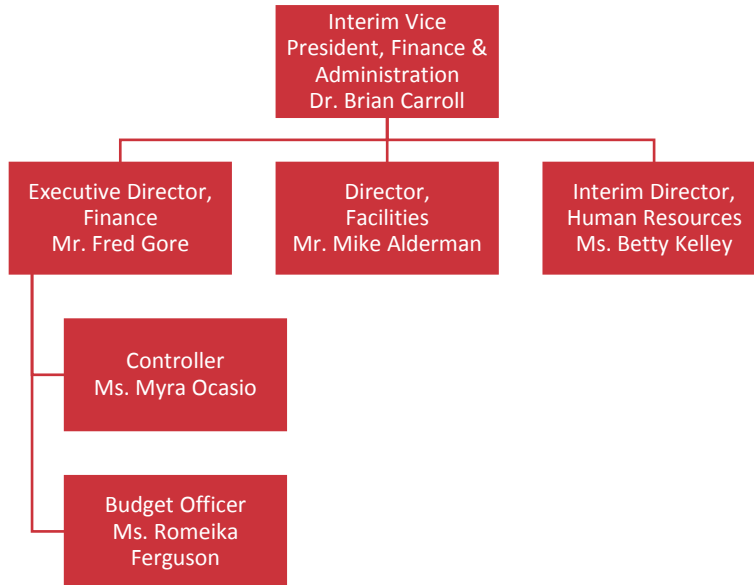
Organizational Charts

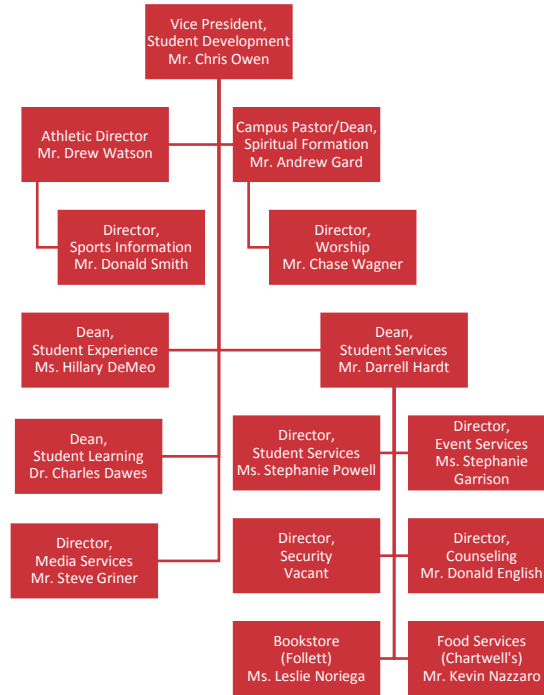


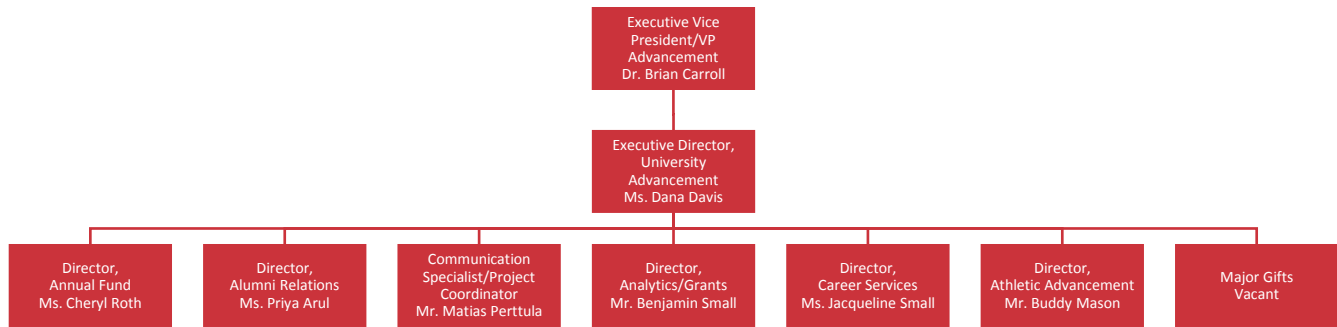














Athletics

Southeastern University is a dual member of the National Association of Intercollegiate Athletics (NAIA) and the National Christian College Athletic Association (NCCAA).

Varsity Sports

<i>Men's</i>		<i>Women's</i>	
Baseball	Golf	Basketball	Soccer
Basketball	Soccer	Cheerleading	Softball
Cross Country	Tennis	Cross Country	Tennis
Football		Golf	Volleyball

Intramural Sports

<i>Men's & Women's</i>	
Basketball	Soccer
Flag Football	Softball
Powder Puff Football	Volleyball
Sand Volleyball	



Athletic News

Football has been going through workouts in preparation for three intrasquad scrimmages later this fall. Groundbreaking for new construction, including the football stadium will be November 14th. The first football game in Fire history will be on September 6, 2014 at Faulkner. The first home game will be on September 13th against Warner.

Women's golf started their first season in the fall of 2013 under the direction of head coach Steve Phelps, who guided the men's team to the first Sun Conference title in school history last spring and a berth in the NAIA National Championship.

Men's basketball will be kicking off their 2013-2014 season with a road trip on October 30th to take on Florida State University in an exhibition game.

For more information on Southeastern University Athletics, please visit <http://www.seufire.com>.



Clubs & Organizations

Anime and Comic Book Club

Circle K International

CNAfME

College Republicans

Debate Club

Dream Center Club

Enactus (formerly SIFE)

Film Club

Flame Throwers

Global Evangelism Outreach Project (GEO Project)

Kappa Delta Pi

League of Christ

Student Christian Medical and Dental Association (SCMDA)

Life Signs

Music Dept. Publicity Team

Phi Alpha

Pre-Health Service Organization (PHSO)

Renewed Not Condemned

SEU Times

Sophia

Speak That

Sports Taekwondo

This is Worship

Timothy Project

Library & Computer Resources

Library Holdings

Books	84,870
Videos	4,496
CDs	3,722
Microform	2,096
Serials	1,224
Ebooks*	36,159
Software	105
Kits	72
Other	162
<hr/>	
Total	132,906

Computers

Total number of computers available to all students: 158

Total Checkouts Last Year: 45,755

Tuition and Fees 2013-2014

Undergraduate

	<i>Semester</i>	<i>Year</i>
Tuition		
12-17 Hours	\$9,493.00	\$18,986.00
Hourly Tuition (under 12 or over 17 hours)	\$750.00	\$750.00
General Student Fee	\$500.00	\$1,000.00
Total for Off-Campus	\$9,993.00	\$19,986.00
 Residence Halls		
Bauer, Bethany, Valencia, South Pointe	\$2,139.00	\$4,278.00
Aventura, Destino, Esperanza	\$2,376.00	\$4,752.00
Other Housing	\$2,530.00	\$5,060.00
	\$2,668.00	\$5,336.00
	\$2,945.00	\$5,890.00

Meal Plans

Carte Blanche Meal Plan	\$2,243.79	\$4,487.58
20-Meal-per-Week Plan	\$2,184.65	\$4,369.30
14-Meal-per-Week Plan	\$2,113.35	\$4,226.70
10-Meal-per-Week Plan	\$2,079.50	\$4,159.00
Commuter Meal Plans		
25-Meal-per-Semester Plan	\$417.33	\$834.66
15-Meal-per-Semester Plan	\$230.40	\$460.80
10-Meal-per-Semester Plan	\$161.93	\$323.86

Room and Meal Plan*	\$4,323.65	\$8,647.30
----------------------------	-------------------	-------------------

Total for On-Campus*	\$14,316.65	\$28,633.30
-----------------------------	--------------------	--------------------

**Based on 12-17 hours, Bauer, Bethany, Valencia, or South Pointe occupancy, and 20-Meal plan*

Other Estimated Expenses

Year

Books and Supplies	\$1,200.00
Misc. (transportation, laundry, entertainment, etc.)	\$2,400.00

Tuition and Fees 2013-2014

Graduate

<i>Program</i>	<i>Tuition/Hr</i>	<i>Credit Hours</i>	<i>Total Tuition</i>
MA in Ministerial Leadership	\$495.00	36	\$17,820.00
MA in Minist. Leadership - Executive Track	\$530.00	36	\$19,080.00
MA in Human Services	\$495.00	36	\$17,820.00
MA in Theological Studies	\$495.00	36	\$17,820.00
Master of Business Administration (MBA)	\$525.00	36	\$18,900.00
Accelerated MBA	N/A	36	\$25,900.00
MEd in Elementary Education	\$375.00	33	\$12,375.00
MEd - All Other Programs	\$375.00	36	\$13,500.00
MS in Professional Counseling	\$525.00	60	\$31,500.00
MS in School Counseling	\$525.00	60	\$31,500.00
MS in Marriage & Family Therapy	\$525.00	60	\$31,500.00
Annual General Student Services Fee	\$300.00		

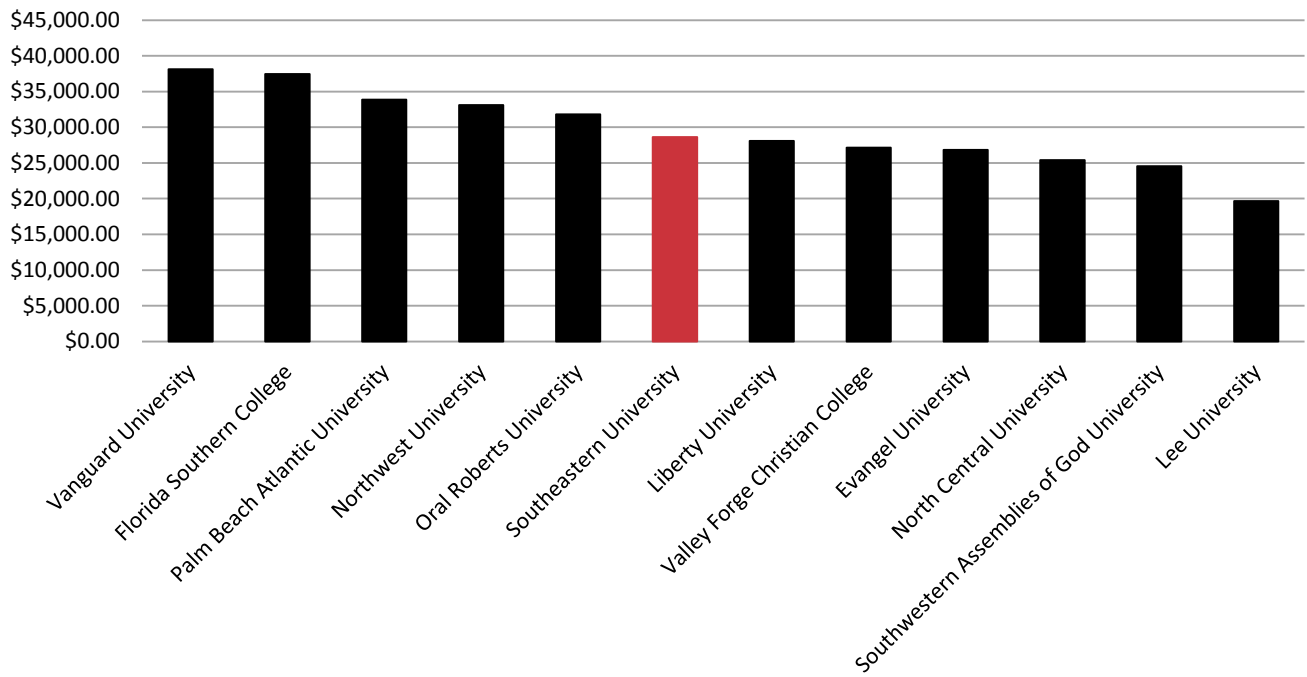




Tuition, Room, and Board Comparison 2013-2014

<i>School</i>	<i>Annual Tuition, Room, & Board</i>
Vanguard University (AG)	\$38,130.00
Florida Southern College	\$37,440.00
Palm Beach Atlantic University	\$33,882.00
Northwest University (AG)	\$33,124.00
Oral Roberts University	\$31,804.00
Southeastern University (AG)	\$28,633.30
Liberty University	\$28,086.00
Valley Forge Christian College (AG)	\$27,158.00
Evangel University (AG)	\$26,830.00
North Central University (AG)	\$25,380.00
Southwestern Assemblies of God University (AG)	\$24,556.00
Lee University	\$19,660.00

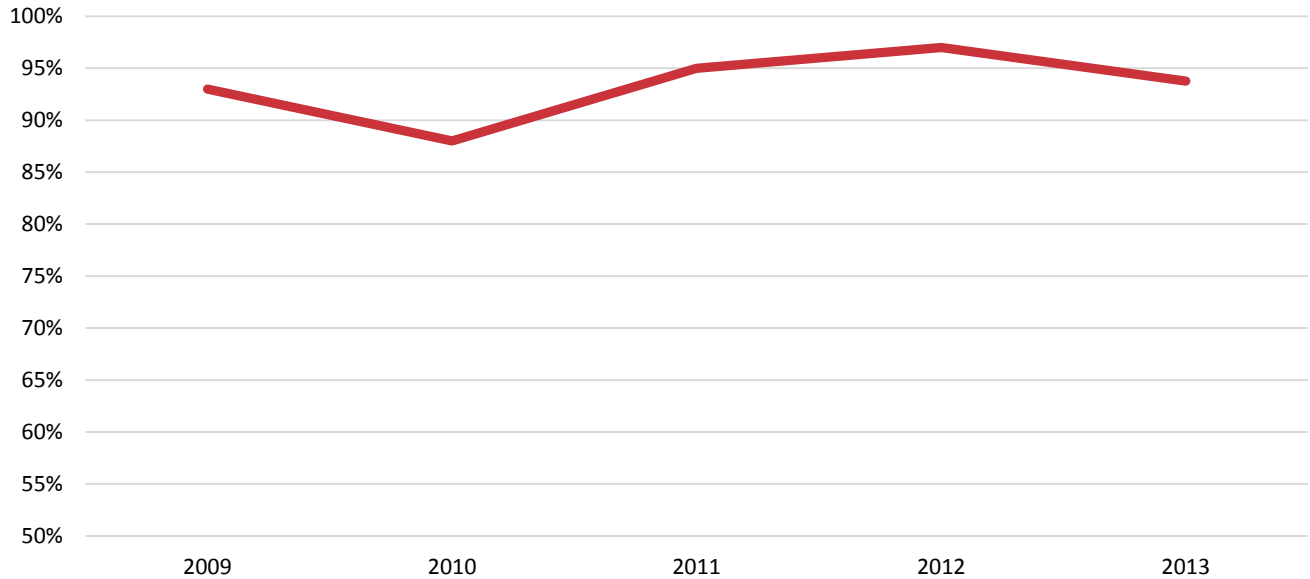




Financial Aid - Entering Freshmen

	2009	2010	2011	2012	2013
Percent Receiving Any Financial Aid	93%	88%	95%	97%	94%
Percent Receiving Federal Grants	37%	42%	50%	48%	48%
Average Amount of Federal Grants	\$4,609	\$4,727	\$4,717	\$4,640	\$4,608
Percent Receiving State/Local Grants	52%	55%	58%	56%	56%
Average Amount of State/Local Grants	\$4,406	\$4,330	\$3,244	\$3,253	\$3,233
Percent Receiving Institutional Grants	76%	80%	88%	87%	77%
Average Amount of Institutional Grants	\$6,067	\$5,644	\$6,423	\$8,036	\$9,285
Percent Receiving Student Loans	83%	65%	90%	93%	79%
Average Amount of Student Loans	\$10,147	\$12,395	\$16,207	\$15,801	\$13,384

Percent of Entering Freshmen Receiving Aid



Academic Programs

<i>College of Behavioral and Social Sciences</i>				<i>Business & Legal Studies (cont.)</i>				
<i>Tr</i>	<i>EW</i>	<i>OL</i>	<i>Ext</i>	<i>Business Administration (cont.)</i>	<i>Tr</i>	<i>EW</i>	<i>OL</i>	<i>Ext</i>
Graduate:				BS Management Information Systems	•			
MA Human Services				BS Marketing	•			
MS Marriage & Family Therapy								
MS Professional Counseling								
MS School Counseling								
Undergraduate:				<u>Dept. of Historical, Legal, & Leadership Studies</u>				
				Undergraduate:				
BS Human Services				Associate in Criminal Justice				•
BS Psychology				BS Business & Professional Leadership				•
BSW Social Work				BS Criminal Justice	•		•	•
				BA, BS History	•			
				BS Organizational Leadership	•	•	•	
<i>College of Business and Legal Studies</i>				<i>College of Comm., Languages, and the Arts</i>				
<i>Department of Business Administration</i>				<i>General Education Studies</i>				
Graduate:				Associate of Arts				•
Master of Business Administration								
Undergraduate:				<u>Department of Communication</u>				
BS Accounting				Undergraduate:				
BS Finance				BA, BS Broadcasting	•			
BS International Business				BA, BS Communication	•			
BS Management								

<i>Communications, Languages, and the Arts (cont.)</i>		<i>College of Christian Ministries and Religion</i>				
<i>Department of Communication (cont.)</i>			<i>Tr</i>	<i>EW</i>	<i>OL</i>	<i>Ext</i>
BA, BS Film Production	•	Graduate:				
BA, BS Journalism/PR	•	MA Ministerial Leadership		•	•	•
BA, BS Theatre	•	MA Theological Studies		•		
<i>Department of English & Foreign Languages</i>		Undergraduate:				
Undergraduate:		Associate in Ministerial Leadership				•
BA English	•	BA Multi-Disciplinary Studies		•		
BA English & Intercultural Studies	•	BS Ministerial Leadership				• •
<i>Department of Music</i>		BA Missional Ministries		•		
Undergraduate:		BS Practical Theology		•		
BA Church Music	•	BS Youth & Family Ministries		•		
BA Music	•	<i>College of Natural and Health Sciences</i>				
BS Music Business	•	BS Biology/Pre-Med		•		
BS Music Education	•	BS General Biology		•		
BM Music Performance	•	BA Mathematics		•		
		BSN Nursing (Bridge Program)				•

Key to Deliveries: Tr=Traditional; EW=Evening/Weekend; OL=Online; Ext=Extension Sites

Academic Programs

College of Education

Extension Site Locations and Programs

Tr EW OL Ext

Graduate:

- MEd Arts & Academic Interdisc. Education* ●
- MEd Educational Leadership ●
- MEd Elementary Education ●
- MEd Exceptional Student Education* ●
- MEd Reading Education ●
- MEd TESOL ●

Undergraduate:

- BS Elementary Education ●
- BS/MEd Exceptional Student Ed. (4+1) ●
- BS Music Education ●
- BS Secondary Biology (6-12) ●
- BS Secondary English (6-12) ●
- BS Secondary Mathematics (6-12) ●
- BS Secondary Social Science (6-12) ●
- BS Sport Management ●

- Accelerate Ministry College – Summerville, SC
 - Associate’s in Ministerial Leadership
 - BS Ministerial Leadership
- Celebration Leadership College – Jacksonville, FL
 - Associate’s in Ministerial Leadership
 - BS Ministerial Leadership
- Chapelhill Leadership School – Douglasville, GA
 - Associate’s in Ministerial Leadership
 - BS Ministerial Leadership
- CrossWalk Leadership Academy – Williamsburg, VA
 - BS Ministerial Leadership
- Fort Lauderdale Extension Site – Ft. Lauderdale, FL
 - Associate’s in Ministerial Leadership
 - BS Ministerial Leadership
- Georgia School of Leadership & Ministry – Griffin, GA
 - BS Ministerial Leadership
- Kairos School of Ministry – Las Vegas, NV
 - BS Ministerial Leadership

**Programs are hybrid, requiring on-campus courses during the Summer.*



Extension Site Locations and Programs (cont.)

Lift Church – Venice, FL

- Associate's in Ministerial Leadership

Miami Leadership Institute – Miami, FL

- Associate of Arts
- Associate's in Ministerial Leadership
- BS Ministerial Leadership

Missions Internship/MI – Puyallup, WA

- Associate of Arts
- Associate's in Ministerial Leadership
- BS Ministerial Leadership

Polk County Sheriff's Office – Winter Haven, FL

- BS Business & Professional Leadership
- BS Criminal Justice, Leadership Concentration
- BS Organizational Leadership, Crim Justice Conc.
- MBA, Criminal Justice Concentration
- MBA, Leadership Concentration

Real Hope School of Ministry – Sarasota, FL

- Associate's in Ministerial Leadership
- BS Ministerial Leadership

Trinity International Worship Center – Haines City, FL

- Associate of Arts
- Associate's in Ministerial Leadership

Hispanic Leadership Center Sites

Equip for Life School of Leadership – Orlando, FL

Tampa HLC Site – Tampa, FL

Dual Enrollment Sites

Calvary Christian Academy – Ormond Beach, FL

Faith Christian Academy – Orlando, FL

Foundation Academy – Winter Garden, FL

Griffin Christian Academy – Griffin, GA

Lake Gibson High School – Lakeland, FL

Pine Castle Christian Academy – Orlando, FL

Real Life Christian Academy – Clermont, FL

Seacoast Christian Academy – Jacksonville, FL

The Rock School – Gainesville, FL

Victory Christian Academy – Lakeland, FL

2013 Fall Enrollment Summary

<i>Undergraduate</i>	<i>New</i>	<i>Returning</i>	<i>Total</i>	<i>Full-Time</i>	<i>Part-Time</i>
Traditional	912	1,127	2,039	1,983	56
Evening/Weekend	7	29	36	26	10
Online	89	199	288	211	77
Extension Sites	189	81	270	251	19
Non-Degree	369	81	450	2	448
<i>Total Undergraduate</i>	<i>1,566</i>	<i>1,517</i>	<i>3,083</i>	<i>2,473</i>	<i>610</i>
<i>Total New Freshmen</i>	<i>865</i>	<i>-</i>	<i>865</i>	<i>842</i>	<i>23</i>

<i>Graduate</i>	<i>New</i>	<i>Returning</i>	<i>Total</i>	<i>Full-Time</i>	<i>Part-Time</i>
MA Theological Studies	1	15	16	9	7
MA Ministerial Leadership	33	25	58	21	37
Master of Business Administration	43	28	71	24	47
MEd Arts & Academic Interdisc. Education	2	6	8	1	7
MEd Educational Leadership	19	37	56	21	35
MEd Elementary Education	3	14	17	6	11
MEd Exceptional Student Education	3	4	7	5	2
MEd Reading Education	10	3	13	6	7
MEd Teaching & Learning	0	14	14	7	7
MEd TESOL	7	0	7	6	1
MA Human Services	26	5	31	17	14
MS Marriage & Family Therapy	1	0	1	0	1
MS Professional Counseling	17	21	38	32	6
MS School Counseling	4	3	7	6	1
Non-Degree	4	3	7	0	7
Total Graduate	173	178	351	161	190
Grand Total Enrollment	1,739	1,695	3,434	2,634	800



Enrollment by Major

<i>College of Behavioral and Social Sciences</i>		<i>Business & Legal Studies (cont.)</i>	
Graduate:		<u>Business Administration (cont.)</u>	
MA Human Services	31	BS Management Information Systems	25
MS Marriage & Family Therapy	1	BS Marketing	54
MS Professional Counseling	38	<u>Dept. of Historical, Legal, & Leadership Studies</u>	
MS School Counseling	7	Undergraduate:	
Undergraduate:		Associate in Criminal Justice	0
BS Human Services	76	BS Business & Professional Leadership	35
BS Psychology	146	BS Criminal Justice	96
BSW Social Work	72	BA, BS History	20
		BS Organizational Leadership	71
		BS Public Policy	1
<i>College of Business and Legal Studies</i>		<i>College of Comm., Languages, and the Arts</i>	
<u>Department of Business Administration</u>		<u>General Education Studies</u>	
Graduate:		Associate of Arts	10
Master of Business Administration	71	<u>Department of Communication</u>	
Undergraduate:		Undergraduate Majors:	
BS Accounting	43	BA, BS Broadcasting	50
BS Finance	27		
BS International Business	41		
BS Management	104		

Communications, Languages, and the Arts (cont.)**Department of Communication (cont.)**

BA, BS Communication	85
BA, BS Film Production	66
BA, BS Graphic Design	7
BA, BS Journalism/PR	38
BA, BS Theatre	25

Department of English & Foreign Languages**Undergraduate:**

BA English	20
BA English & Intercultural Studies	19

Department of Music**Undergraduate:**

BA Church Music	29
BA Music	4
BS Music Business	32
BM Music Performance	21
Pre-Music	37

College of Christian Ministries and Religion**Graduate:**

MA Ministerial Leadership	58
MA Theological Studies	16

Undergraduate:

Associate in Ministerial Leadership	102
BS Church Ministries	71
BA Interdisciplinary Studies	36
BA Multi-Disciplinary Studies	20
BS Ministerial Leadership	194
BA Missional Ministries	50
BS Practical Ministries	44
BS Practical Theology	112
BS Youth & Family Ministries	37

College of Natural and Health Sciences

BS Biology/Pre-Med	75
BS General Biology	37
BA Mathematics	13
BSN Nursing (Bridge Program)	10
Pre-Biology	25
Pre-Mathematics	1
Pre-Nursing	11

Enrollment by Major

College of Education

Graduate:

MEd Arts & Academic Interdisc. Ed.	8
MEd Educational Leadership	56
MEd Elementary Education	17
MEd Exceptional Student Education	7
MEd Reading Education	13
MEd Teaching & Learning	14
MEd TESOL	7

Undergraduate:

BS Elementary Education	146
BS/MEd Exceptional Student Ed. (4+1)	64
BS Music Education	25
BS Middle Grades English (5-9)	1
BS Middle Grades Social Science (5-9)	1
BS Secondary Biology (6-12)	4
BS Secondary English (6-12)	25
BS Secondary Mathematics (6-12)	9
BS Secondary Social Science (6-12)	15
BS Sport Management	111





Totals

Undergraduate:

College of Behavioral & Social Sciences	296
College of Business & Legal Studies	523
College of Comm., Lang., & the Arts	443
College of Christian Ministries & Religion	666
College of Education	401
Department of Natural & Health Sciences	172
<i>The Academy</i>	71
<i>Dual Enrolled</i>	359
<i>Non-Degree</i>	20
<i>Undeclared</i>	132
Total Undergraduate:	3083

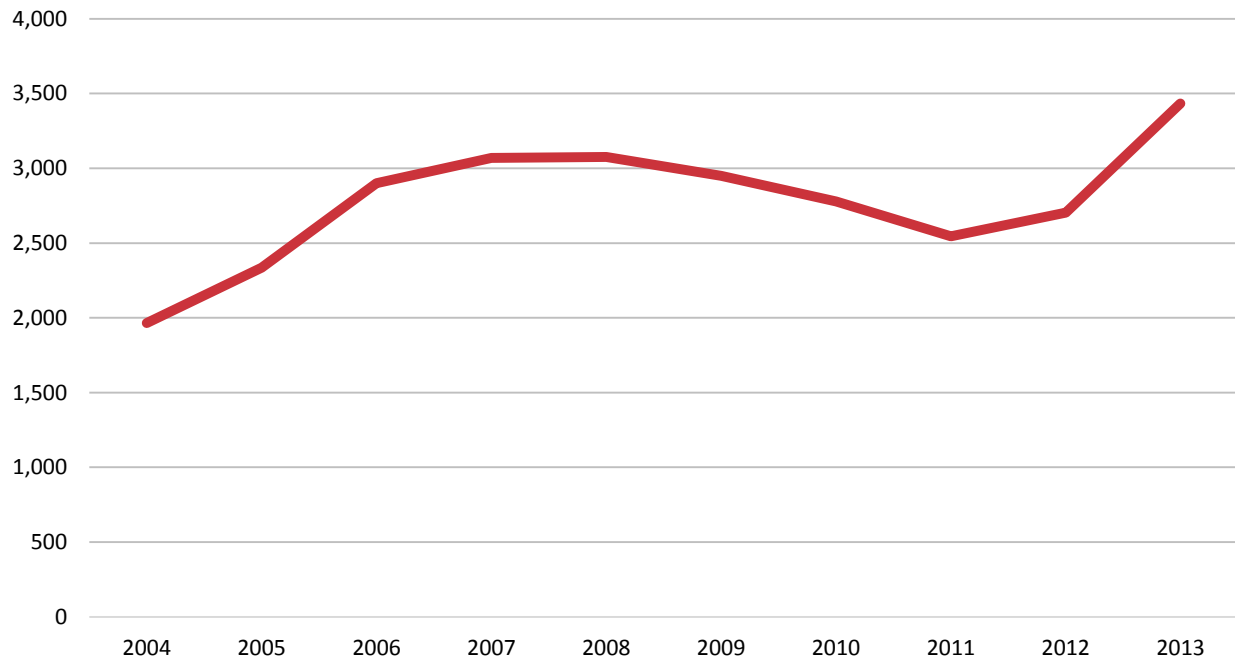
Graduate:

College of Behavioral & Social Sciences	77
College of Business & Legal Studies	71
College of Christian Ministries & Religion	74
College of Education	122
<i>Non-Degree</i>	7
Total Graduate:	351
Total University Enrollment:	3434

Total Enrollment, 2004-2013

	2004	2005	2006	2007	2008	2009	2010	2011	2012	2013
Undergraduate	1,964	2,297	2,810	2,931	2,867	2,665	2,510	2,320	2,448	3,083
Graduate	-	39	91	138	208	285	269	226	255	351
Total	1,964	2,336	2,901	3,069	3,075	2,950	2,779	2,546	2,703	3,434

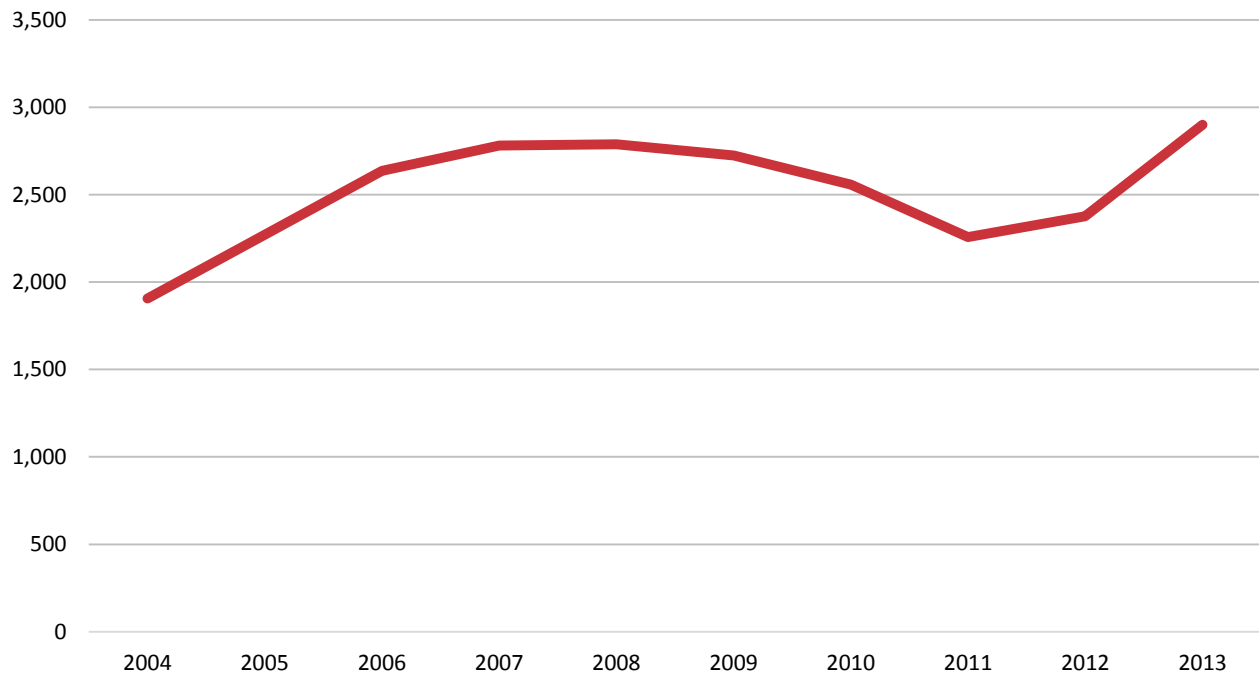




Full-Time Equivalency Enrollment, 2004-2013

	2004	2005	2006	2007	2008	2009	2010	2011	2012	2013
Undergraduate	1,906	2,225	2,551	2,664	2,618	2,494	2,348	2,126	2,220	2,676
Graduate	-	46	86	116	171	231	209	132	156	224
Total	1,906	2,271	2,637	2,780	2,789	2,725	2,557	2,258	2,376	2,901

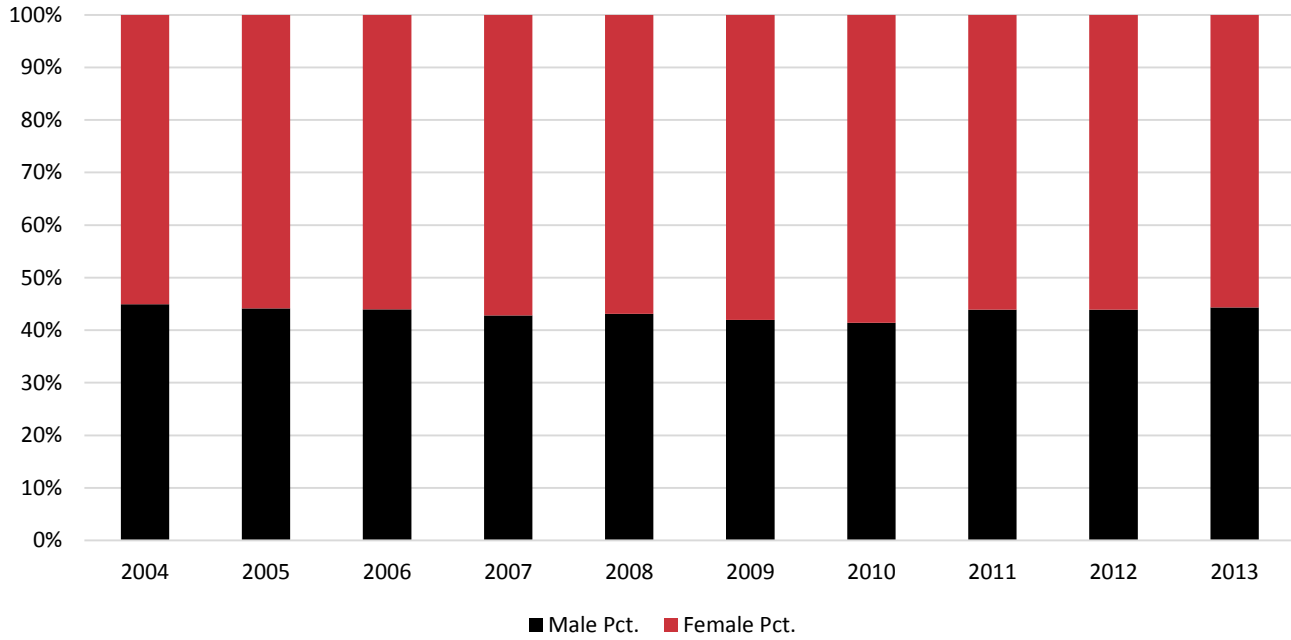
**Full-Time Equivalency: three part-time students equal one full-time equivalent student.*



Enrollment by Gender, 2004-2013

	2004	2005	2006	2007	2008	2009	2010	2011	2012	2013
Male	882	1,025	1,276	1,314	1,326	1,238	1,150	1,118	1,186	1,512
Male Pct.	44.9%	44.1%	44.0%	42.8%	43.1%	42.0%	41.4%	43.9%	43.9%	44.3%
Female	1,081	1,298	1,625	1,755	1,749	1,712	1,629	1,428	1,517	1,898
Female Pct.	55.1%	55.9%	56.0%	57.2%	56.9%	58.0%	58.6%	56.1%	56.1%	55.7%





Enrollment by Race and Ethnicity, 2007-2013

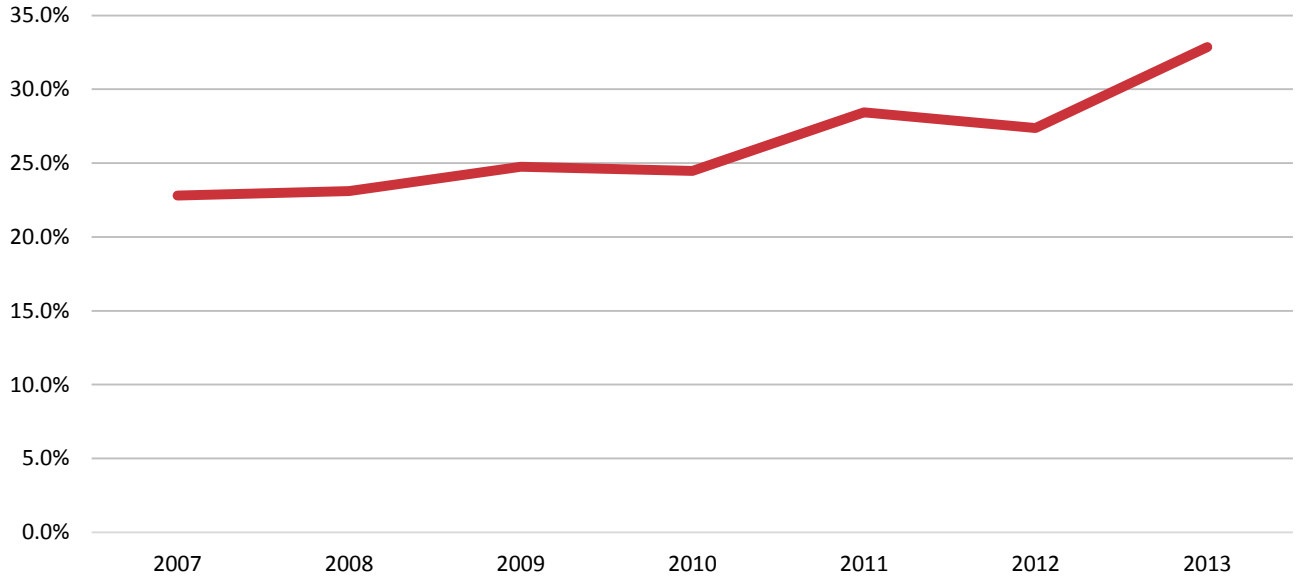
Racial/Ethnic Group	2007	2008	2009	2010	2011	2012	2013
Nonresident Alien	3	2	2	53	23	21	28
Black or African American	203	216	258	245	263	273	438
American Indian/Alaska Native	6	3	7	6	10	12	12
Asian [†]	33	32	32	25	24	29	46
Hawaiian/Pacific Islander [†]				2	3	5	12
Hispanics of Any Race	331	344	342	320	342	349	505
White	1,940	1,979	1,943	1,852	1,666	1,822	2125
Two or More Races [†]				2	20	19	27
Race/Ethnicity Unknown	553	499	366	274	195	173	241
Ethnic Minority Percentage*	22.8%	23.1%	24.7%	24.5%	28.4%	27.4%	32.9%

†Prior to 2010 Race & Ethnicity was reported under the old categories which combined Asian and Hawaiian/Pacific Island groups and did not include Two or More Races.

**Nonresident Alien and Race/Ethnicity Unknown categories are excluded from this calculation.*

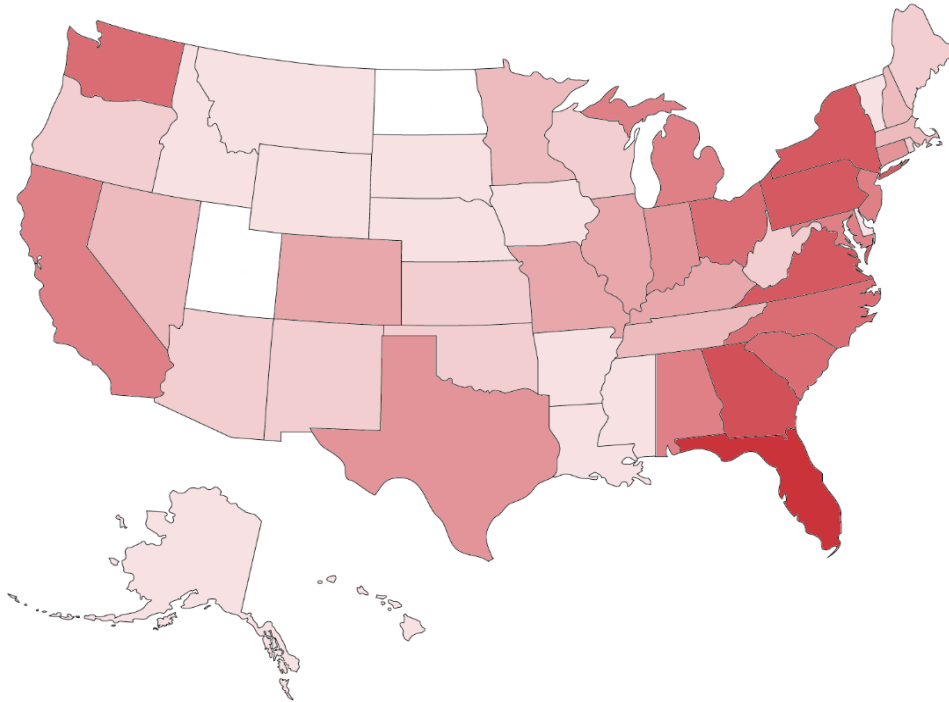


Ethnic Minority Percentage



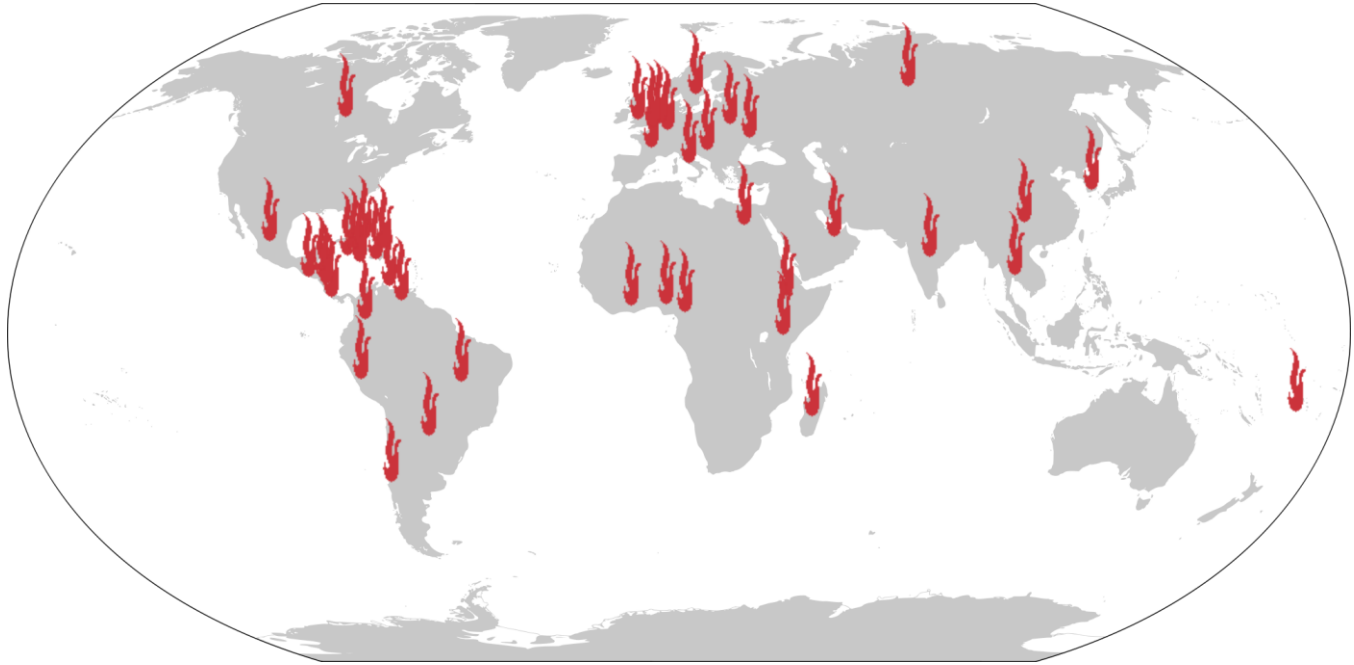
Enrollment by State or US Territory

<i>State/Territory</i>	<i>Enrolled</i>	<i>Enrolled</i>	<i>Enrolled</i>
Alabama	33	Kentucky	19
Alaska	2	Louisiana	3
Arizona	2	Maine	8
Arkansas	2	Maryland	30
California	31	Massachusetts	15
Colorado	18	Michigan	36
Connecticut	24	Minnesota	11
Delaware	2	Mississippi	3
District of Columbia	0	Missouri	17
Florida	2365	Montana	1
Georgia	135	Nebraska	3
Guam	1	Nevada	15
Hawaii	2	New Hampshire	11
Idaho	2	New Jersey	33
Illinois	19	New Mexico	6
Indiana	20	New York	66
Iowa	1	North Carolina	40
Kansas	8	North Dakota	0
		Ohio	46
		Oklahoma	6
		Oregon	7
		Pennsylvania	75
		Puerto Rico	3
		Rhode Island	6
		South Carolina	41
		South Dakota	2
		Tennessee	14
		Texas	20
		Utah	0
		Vermont	3
		Virginia	53
		Washington	49
		West Virginia	7
		Wisconsin	8
		Wyoming	1



International Enrollment

<i>Nation</i>	<i>Enrolled</i>	<i>Enrolled</i>	<i>Enrolled</i>
The Bahamas	5	France	1
Belarus	1	Germany	1
Brazil	9	Ghana	3
Cameroon	1	Guatemala	2
Canada	6	Haiti	8
Cayman Islands	1	Honduras	1
Chile	1	Hungary	1
China	3	India	2
Colombia	7	Italy	2
Costa Rica	1	Jamaica	4
Cuba	1	Kenya	2
Curaçao	1	South Korea	2
Egypt	1	Lithuania	1
Ethiopia	1	Madagascar	1
Fiji	1	Mexico	1
		Netherlands	2
		Nicaragua	1
		Nigeria	7
		Paraguay	2
		Peru	2
		Russia	1
		Sweden	1
		Thailand	1
		Turks & Caicos Is.	0
		Ukraine	1
		Utd. Arab Emirates	1
		United Kingdom	3
		Venezuela	2
		Total Int'l	96
		Pct. of Total	2.8%
		Total Countries	43

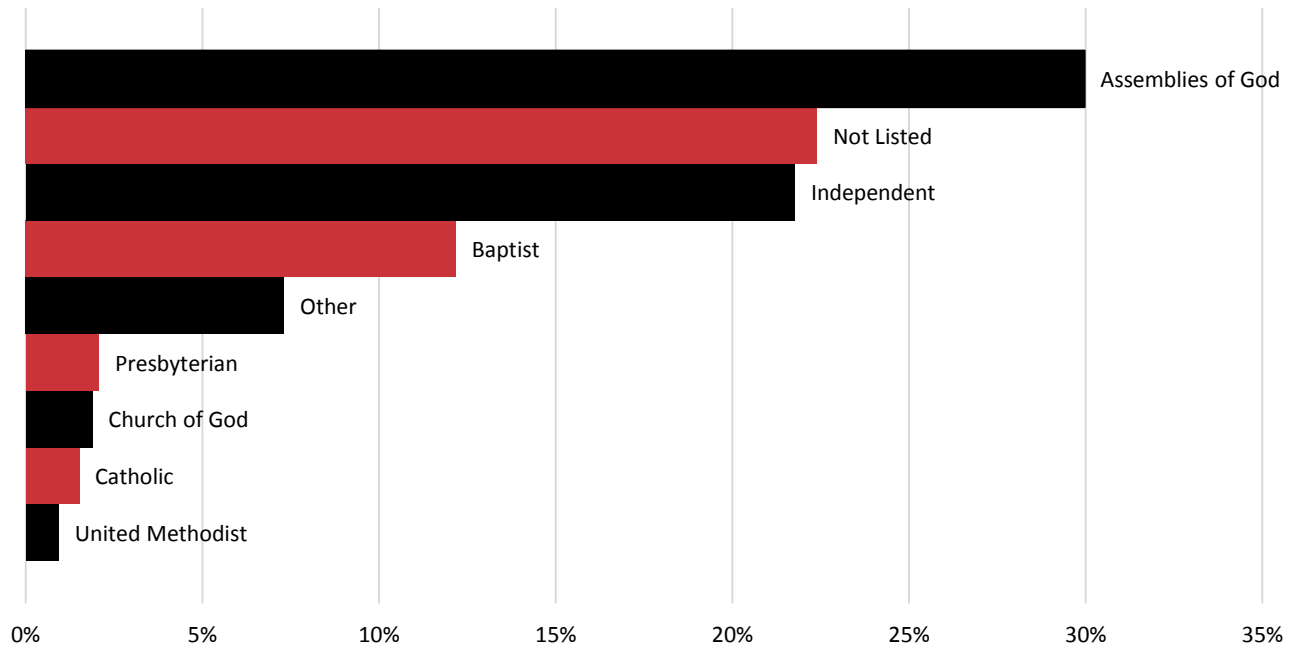


Enrollment by Denomination

<i>Denomination</i>	<i>2011</i>		<i>2012</i>		<i>2013</i>	
	No.	Pct.	No.	Pct.	No.	Pct.
Assemblies of God	802	31.5%	901	33.3%	1029	30.0%
Independent	594	23.3%	620	22.9%	747	21.8%
Baptist	358	14.1%	374	13.8%	418	12.2%
Church of God	82	3.2%	71	2.6%	65	1.9%
Presbyterian	48	1.9%	60	2.2%	71	2.1%
Catholic	33	1.3%	37	1.4%	52	1.5%
United Methodist	50	2.0%	36	1.3%	32	0.9%
Other	122	4.8%	45	1.7%	251	7.3%
Not Listed	457	17.9%	559	20.7%	769	22.4%

**Students from Dual-Enrollment Extension Sites located at public schools not included in these calculations.*

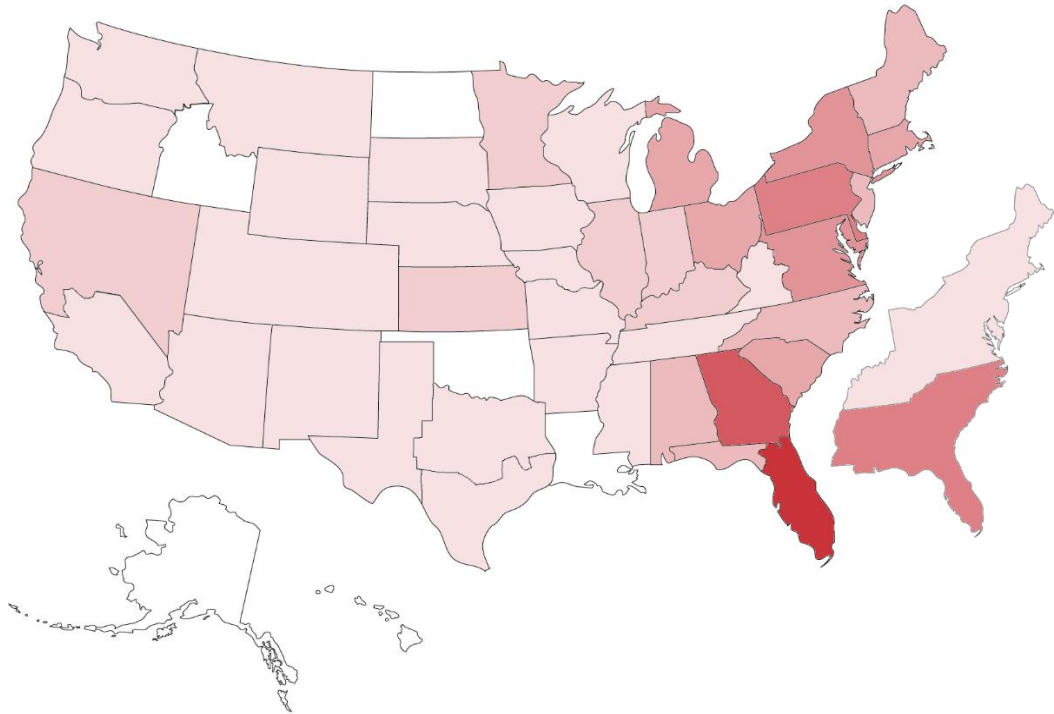




Enrollment by Assemblies of God District

<i>District</i>	<i>2011</i>	<i>2012</i>	<i>2013</i>	<i>District</i>	<i>2011</i>	<i>2012</i>	<i>2013</i>
<i>Sponsoring Districts:</i>				<i>Top Five Other Districts:</i>			
Alabama	15	14	17	Pennsylvania/Delaware	53	48	41
Appalachian	5	5	4	New York	20	24	37
Georgia	26	78	89	Potomac	30	38	32
North Carolina	18	21	16	Ohio	27	24	27
Penninsular Florida	348	364	374	Southern New England	17	18	24
South Carolina	14	11	26				
Southeastern Spanish	11	25	42	<i>Other Districts:</i>	193	208	280
Tennessee	7	6	3				
West Florida	18	17	17				
<i>Total AG Enrollment:</i>					<i>802</i>	<i>901</i>	<i>1,029</i>

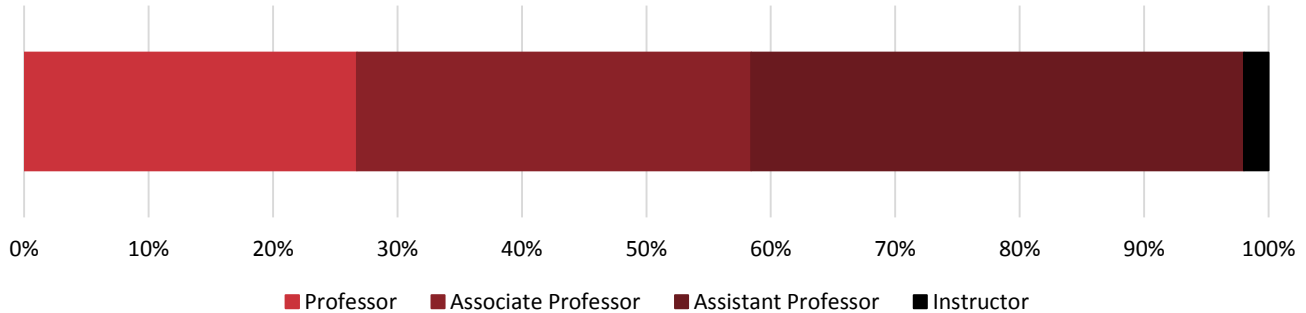




Faculty Division and Rank

<i>Division</i>	<i>Professor</i>	<i>Associate Professor</i>	<i>Assistant Professor</i>	<i>Instructor</i>	<i>Total</i>
College of Behavioral & Social Sciences	2	4	5	0	11
College of Business & Legal Studies	3	9	5	0	17
Business Administration	2	5	5	0	12
Historical, Legal, & Leadership Studies	1	4	0	0	5
College of Communication, Languages & the Arts	6	5	15	1	27
Communication	1	1	6	0	8
English & Foreign Languages	1	1	7	0	9
Music	4	3	2	1	10
College of Christian Ministries & Religion	9	4	3	1	17
College of Education	5	1	10	0	16
Department of Natural & Health Sciences	2	9	2	0	13
Library Faculty	1	2	1	0	4
Administration & Ranked Staff	9	2	3	1	15

Instructional Faculty	27	32	40	2	101
Percentage of Instructional Faculty	26.7%	31.7%	39.6%	2.0%	
Total Faculty	37	36	44	3	120
Percentage of Total Faculty	30.8%	30.0%	36.7%	2.5%	
Instructional Faculty with Terminal Degrees	27	28	22	0	77
Percentage of Rank Category	100.0%	87.5%	55.0%	0.0%	76.2%
Total Faculty with Terminal Degrees	35	29	23	0	87
Percentage of Rank Category	94.6%	80.6%	52.3%	0.0%	72.5%

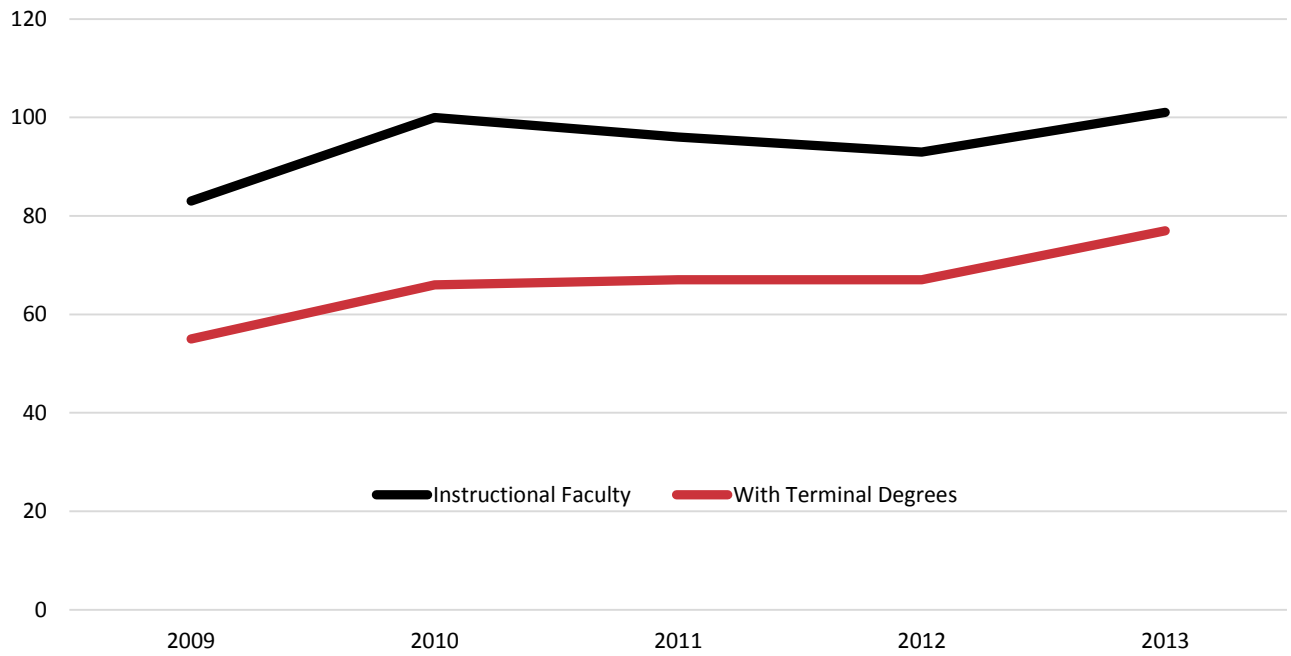


Instructional Faculty, 2009-2013

<i>College/Department</i>	<i>2009</i>	<i>2010</i>	<i>2011</i>	<i>2012</i>	<i>2013</i>
College of Behavioral & Social Sciences	9	11	10	10	11
College of Business & Legal Studies	18	21	19	17	17
Business Administration	13	15	13	12	12
Historical, Legal, & Leadership Studies	5	6	6	5	5
College of Communication, Languages & the	43	50	49	37	27
Communication	6	8	8	8	8
English & Foreign Languages	9	10	10	9	9
Music	9	10	10	9	10
College of Christian Ministries & Religion	14	17	17	17	17
College of Education	8	12	11	12	16
Department of Natural & Health Sciences	10	11	11	11	13
Total Instructional Faculty	83	100	96	93	101
 Instructional Faculty with Terminal Degrees	55	66	67	67	77
Percentage	66.3%	66.0%	69.8%	72.0%	76.2%

**College total includes former departments of Behavioral & Social Sciences through 2011, and Natural & Health Sciences through 2012.*





Instructional Faculty Demographics

<i>Age</i>	<i>Count</i>	<i>Percent</i>	<i>Demographic</i>	<i>Count</i>	<i>Percent</i>
Under 30	5	5.0%	Male	67	66.3%
30-39	12	11.9%	Female	34	33.7%
40-49	25	24.8%			
50-59	33	32.7%	Nonresident Alien	0	0.0%
60-69	22	21.8%	Black or African American	9	8.9%
70-79	4	4.0%	American Indian/Alaska Native	0	0.0%
80+	0	0.0%	Asian	4	4.0%
			Hawaiian/Pacific Islander	1	1.0%
<i>25th %</i>	<i>42.7</i>		Hispanics of Any Race	2	2.0%
<i>Mean Age</i>	<i>51.3</i>		White	83	82.2%
<i>75th %</i>	<i>60.2</i>		Two or More Races	2	2.0%
			Race/Ethnicity Unknown	0	0.0%

Ethnic Minorities: 17.8%



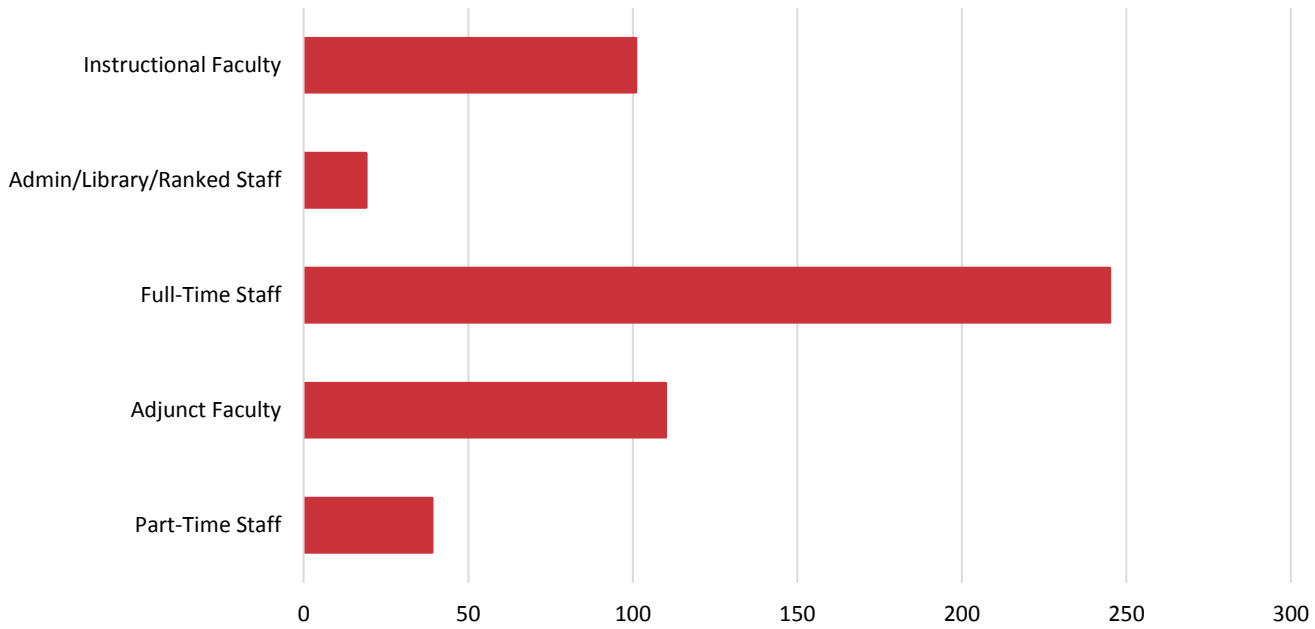
Student to Faculty Ratio

<i>2004</i>	<i>2005</i>	<i>2006</i>	<i>2007</i>	<i>2008</i>	<i>2009</i>	<i>2010</i>	<i>2011</i>	<i>2012</i>	<i>2013</i>
23.7:1	24.9:1	23.1:1	23.8:1	22.0:1	22.0:1	19.1:1	18.7:1	18.9:1	19.5:1



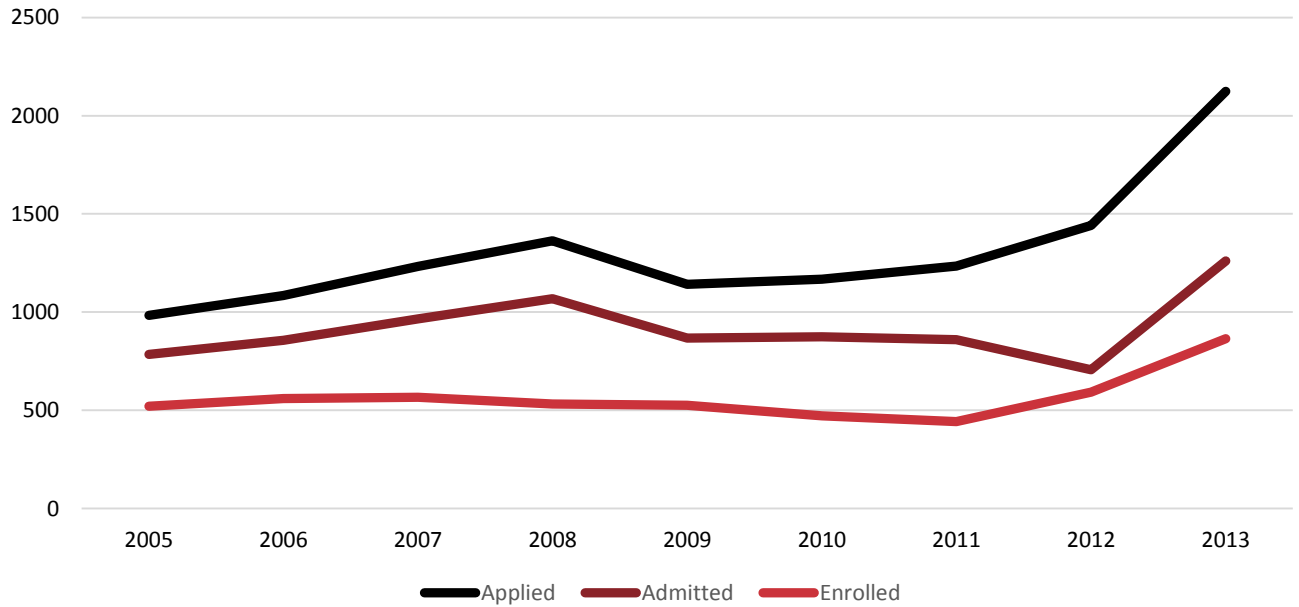
Faculty and Staff

<i>Category</i>	<i>Total</i>
Instructional Faculty	101
Administration, Library, Ranked Staff	19
Full-Time Staff	245
Administrative Support Workers	84
Craft Workers	12
Executive/Senior-Level Officials & Managers	15
First/Mid-Level Officials & Managers	27
Laborers & Helpers	8
Professionals	66
Service Workers	32
Technicians	1
Other	0
Total Full-Time Employees	365
Adjunct Faculty (Non-Staff)	110
Part-Time Staff	39
Total Employees	514



Applications for Freshman Admission

		<i>Applied</i>	<i>Admitted</i>	<i>Pct. Admitted</i>	<i>Enrolled</i>	<i>Pct. Admit'd That Enrolled</i>
2011	Male	503	330	65.6%	206	62.4%
	Female	731	529	72.4%	237	44.8%
	Total	1234	859	69.6%	443	51.6%
2012	Male	555	277	49.9%	251	90.6%
	Female	887	430	48.5%	341	79.3%
	Total	1442	707	49.0%	592	83.7%
2013	Male	1020	579	56.8%	432	74.6%
	Female	1104	681	61.7%	432	63.4%
	Total	2124	1260	59.3%	864	68.6%



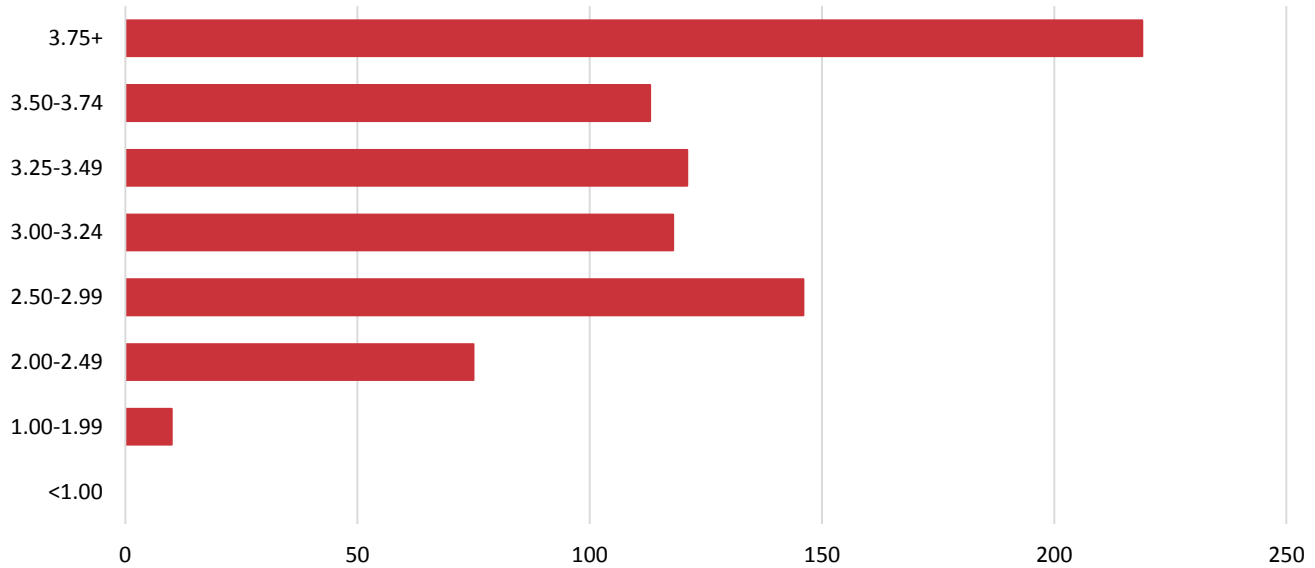
SAT, ACT, & GPA - Entering Freshmen

	<i>SAT Critical</i>			<i>ACT</i>
	<i>Reading</i>	<i>SAT Math</i>	<i>SAT Writing</i>	<i>Composite</i>
25th Percentile	430	410	420	17
75th Percentile	550	530	530	23
Average SAT Composite (Reading & Math Only): 963				(N=511)
Average SAT Composite (Reading/Math/Writing): 1440				(N=507)
Average ACT Composite: 20.3				(N=424)

<i>High School GPA</i>	
3.75 and higher: 27.3%	2.50 and 2.99: 18.2%
Between: 3.50 and 3.74: 14.1%	2.00 and 2.49: 9.4%
3.25 and 3.49: 15.1%	1.00 and 1.99: 1.2%
3.00 and 3.24: 14.7%	Below 1.00: 0.0%
Average GPA: 3.35 (N=802)	

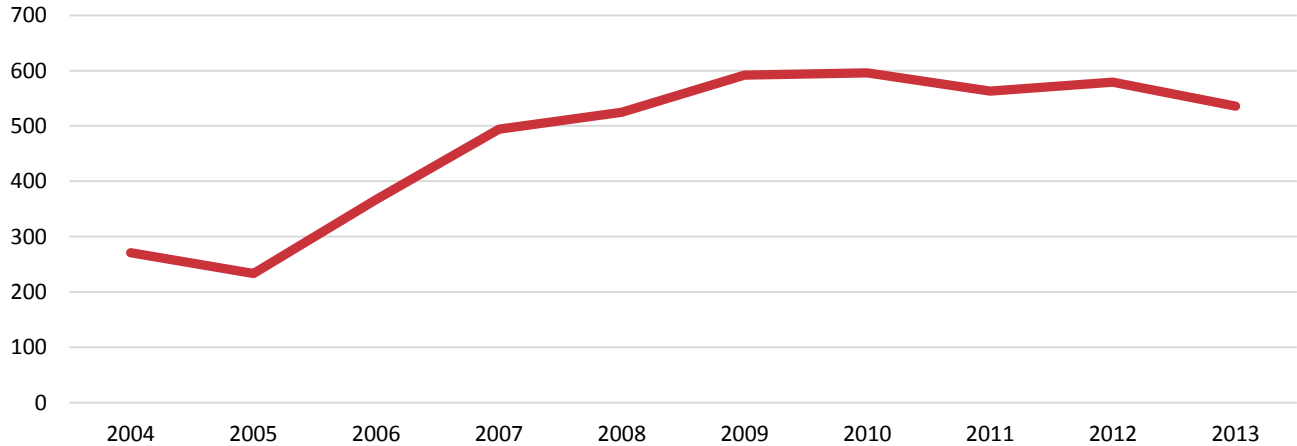


High School GPAs



Completions

	2004	2005	2006	2007	2008	2009	2010	2011	2012	2013
Male	135	105	159	229	222	262	235	239	207	240
Female	136	128	208	265	303	330	361	324	372	296
Total	271	233	367	494	525	592	596	563	579	536



Completions, 2012-2013

	<i>Bachelor's</i>	<i>Master's</i>	<i>Total</i>	<i>Percent</i>
<i>By Gender:</i>				
Male	200	40	240	44.8%
Female	249	47	296	55.2%
<i>By Race/Ethnicity</i>				
Nonresident Alien	3	1	4	0.7%
Black or African American	35	7	42	7.8%
American Indian/Alaska Native	2	0	2	0.4%
Asian	1	0	1	0.2%
Hawaiian/Pacific Islander	2	0	2	0.4%
Hispanics of Any Race	47	8	55	10.3%
White	335	65	400	74.6%
Two or More Races	3	1	4	0.7%
Race/Ethnicity Unknown	21	5	26	4.9%
Grand Total	449	87	536	

**Degrees Conferred from July 1, 2012 to June 30, 2013*



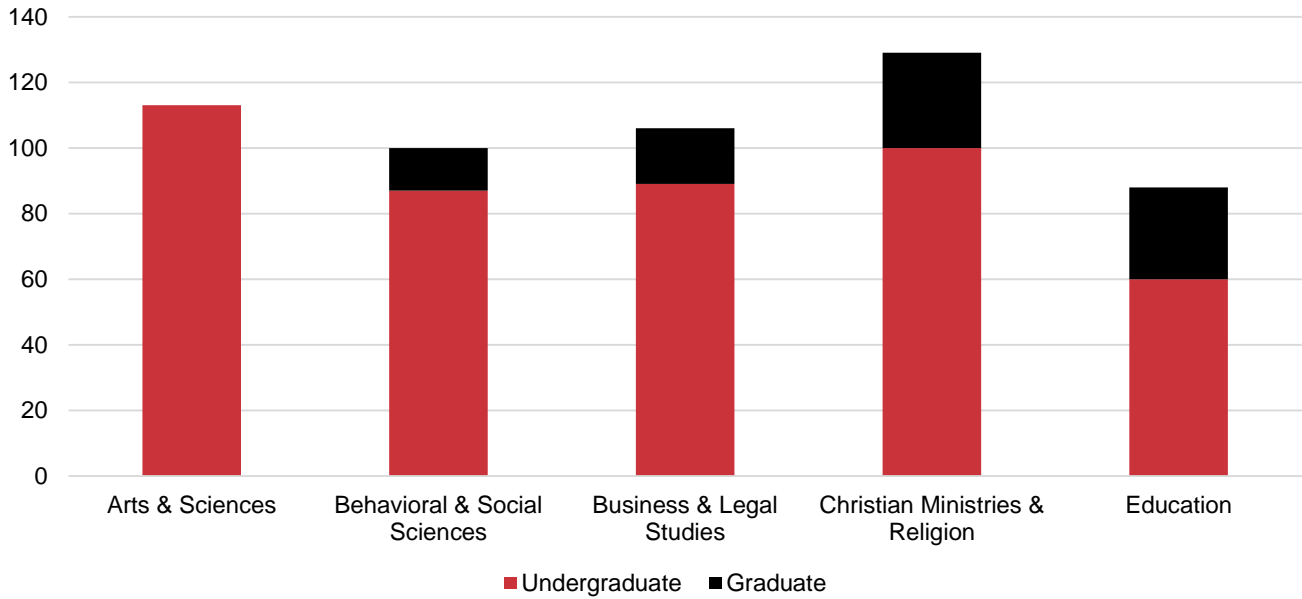
Completions, 2012-2013 (cont.)

Undergraduate

College of Arts and Sciences	113	21.1%
Communication	65	12.1%
English & Foreign Languages	16	3.0%
Music	11	2.1%
Natural Sciences & Mathematics	21	3.9%
College of Behavioral & Social Sciences	87	16.2%
College of Business & Legal Studies	89	16.6%
Business Administration	60	11.2%
Historical, Legal, & Leadership Studies	29	5.4%
College of Christian Ministries & Religion	100	18.7%
College of Education	60	11.2%
Total	449	83.8%

Graduate

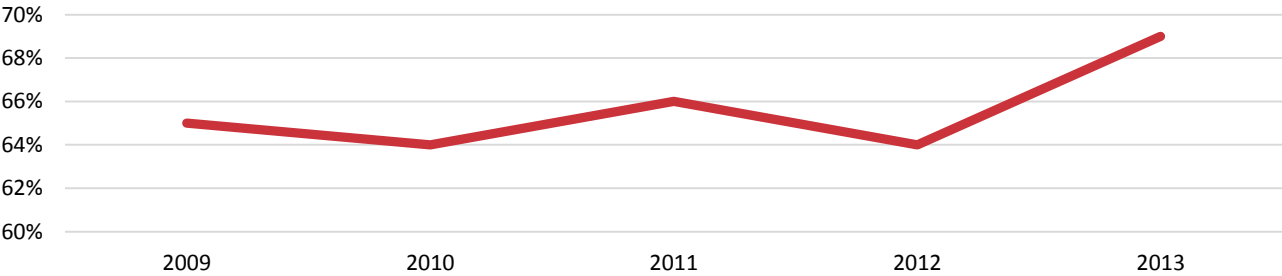
College of Behavioral & Social Sciences	13	2.4%
College of Business & Legal Studies	17	3.2%
College of Christian Ministries & Religion	29	5.4%
College of Education	28	5.2%
Total	87	16.2%



Retention and Graduation Rates

Retention Rates

Freshman Cohort Year	Pct. Returned Following Fall
2008	65%
2009	64%
2010	66%
2011	64%
2012	69%



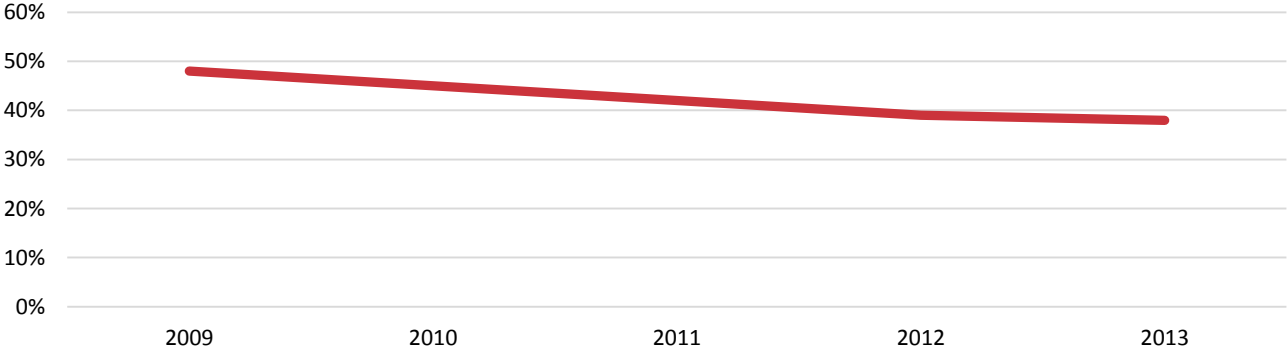
Graduation Rates

Freshman Cohort Year

- 2003
- 2004
- 2005
- 2006
- 2007

Pct. Graduated within Six Years

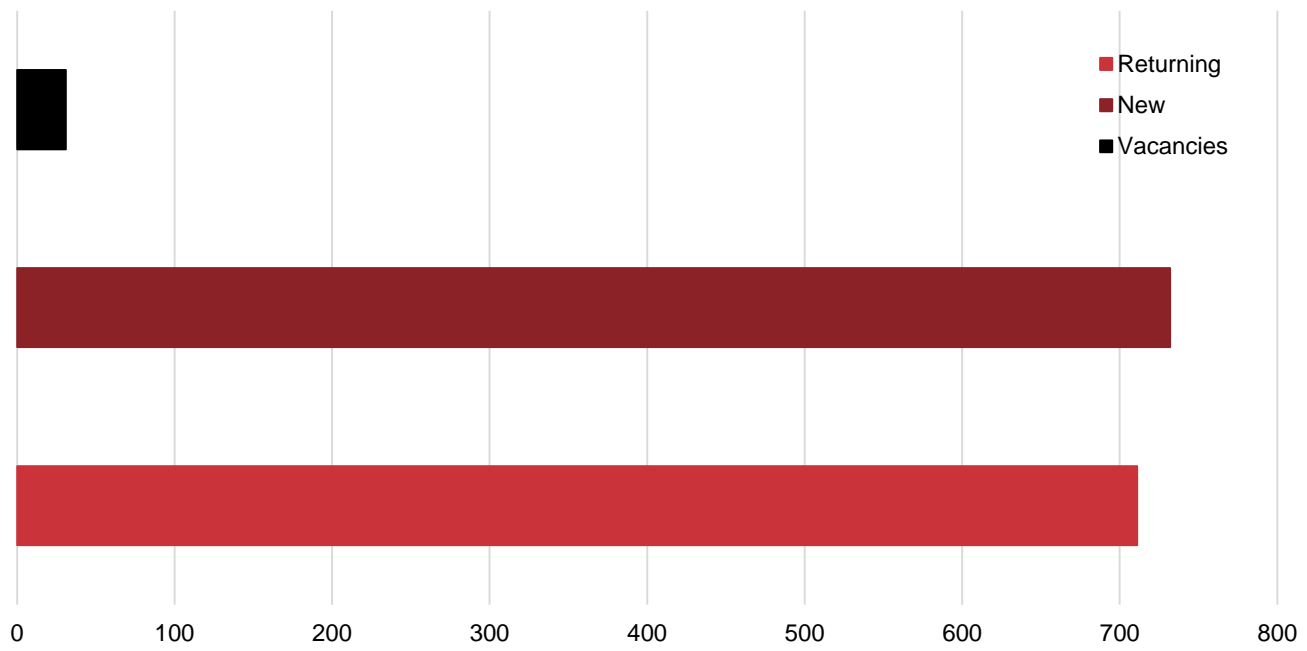
- 48% 2009
- 45% 2010
- 42% 2011
- 39% 2012
- 38% 2013



Campus Housing

<i>Residence Hall</i>	<i>Capacity</i>	<i>Returning Students</i>	<i>New Students</i>	<i>Total</i>	<i>Vacancies</i>
Bauer	198	37	157	194	4
Buttercup	27	21	4	25	2
Destino	256	142	114	256	0
Sunset	6	6	0	6	0
South Pointe	67	31	36	67	0
Valencia	98	46	51	97	1
Men's Total	652	283	362	645	7
Bethany	180	35	142	177	3
South Pointe	50	42	6	48	2
Valencia	33	19	10	29	4
Esperanza	259	152	102	254	5
Buttercup	44	39	4	43	1
Aventura	256	141	106	247	9
Women's Total	822	428	370	798	24
Total	1474	711	732	1443	31

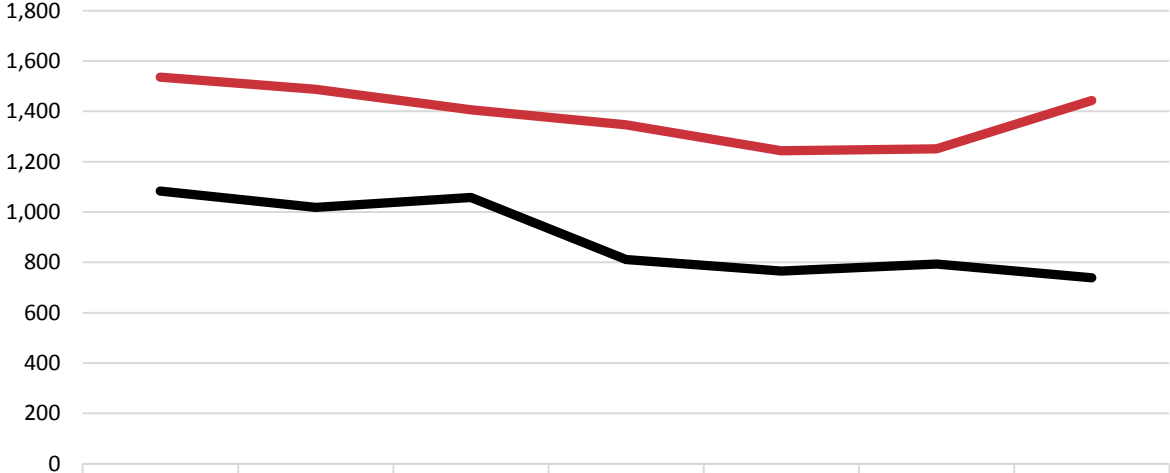




Housing Capacity

<i>Year</i>	<i>Residents</i>	<i>Growth</i>	<i>Capacity</i>	<i>Capacity %</i>
2007	1,536	1.3%	1,551	99.0%
2008	1,488	-3.1%	1,556	95.6%
2009	1,406	-5.5%	1,513	92.9%
2010	1,347	-4.2%	1,447	93.1%
2011	1,243	-7.7%	1,423	87.4%
2012	1,251	0.6%	1,355	92.3%
2013	1,443	15.3%	1,474	97.9%

On-Campus Enrollment



	2007	2008	2009	2010	2011	2012	2013
Commuters	1,084	1,019	1,058	811	766	793	739
Residents	1,536	1,488	1,406	1,347	1,243	1,251	1,443



SOUTHEASTERN
UNIVERSITY

Office of Institutional Effectiveness

Transforming minds. Engaging culture.



SOUTHEASTERN UNIVERSITY

Office of Institutional Effectiveness

1000 Longfellow Blvd. | Lakeland, Florida 33801-6034

863.667.5408 fax 863.667.5200

