



SOUTHEASTERN
UNIVERSITY

2010-2011

FACT BOOK

Published in October 2010 by

Southeastern University
Office of Institutional Research & Retention
1000 Longfellow Blvd. Lakeland, FL 33801
Dr. Andrew H. Permenter, Dean
ahpermenter@seuniversity.edu
Mr. Keith A. Kelso
kakelso@seuniversity.edu

Copyright © 2010 Southeastern University

FACT BOOK 2010 – 2011

TABLE OF CONTENTS

Mission Statement/Board of Regents	1
Mission in Action	2
Institutional Goals	3
History of Southeastern	5
Points of Excellence	6
Accreditation	7
Institutional Memberships	8
Organizational Charts	9
Academic Programs	13
Athletics & Leadership Positions	15
Clubs and Organizations	16
Tuition and Fees	17
Tuition, Room & Board Comparison	19
Financial Aid – Entering Freshman	20
Enrollment	
<i>Total Enrollment</i>	21
<i>Total Enrollment FTE (Full-time Equivalent)</i>	22
<i>Enrollment by Major</i>	23
<i>Enrollment by Gender</i>	26
<i>Enrollment by State of Residence</i>	27
<i>Enrollment by Race/Ethnic Group</i>	28
<i>International Student Enrollment</i>	29
<i>Enrollment by Denomination</i>	30
<i>Enrollment by AG District</i>	31
Faculty & Staff	
<i>Faculty Roster – Division and Rank</i>	32
<i>Full-Time Instructional Faculty</i>	33
<i>Faculty/Staff/Administration</i>	34
Applications for Admissions – Entering Freshman	35
SAT, ACT, and GPA – Entering Freshmen	36
Completions	37
Retention and Graduation Rates	39
Housing	40
Library & Computer Resources	42
Notes	43

MISSION STATEMENT

Southeastern, a dynamic, Christ-centered university, fosters student success by integrating personal faith and higher learning. Within our loving Pentecostal community, we challenge students to a lifetime of good work and of preparing professionally so they can creatively serve their generation in the Spirit of Christ.

BOARD OF REGENTS MEMBERS

Dr. Charles Kelly, Acting President

Reverend Terry Raburn, Acting Chairman

Mr. Gardner Altman, Jr.

Reverend Wayne Blackburn

Mr. David Burdine

Mrs. Jennifer Closshey

Reverend Richard Collins

Reverend Marvin Dennis

Reverend Kenneth Draughon

Dr. Saturnino Gonzalez

Reverend JR Gould

Former Senator Oscar N. Harris

Reverend Mark Jakelsky

Reverend John Jordan

Reverend Dennis Lacy

Reverend Steve Mason

Reverend Terry Roberts

Reverend Ramon Rojas

Reverend Victor Smith

Reverend Robert Thompson

Reverend Randy Valimont

Reverend Max Yeary

MISSION IN ACTION

From its inception in 1935 as a Bible institute to train pastors and missionaries, Southeastern has rested on a solid foundation of vision and faith. That foundation has held firmly as our school evolved and relocated through the years, gradually expanding its mission and degree offerings along with its student population, and moving in 1952 to our permanent suburban campus in Lakeland, Florida.

Today, vision and faith still underlie Southeastern University. An Assemblies of God university – coeducational and primarily residential – Southeastern enrolls nearly 3,000 students, both traditional and nontraditional, who represent a variety of denominations, personal interests, backgrounds, states, and countries.

We offer a vital, Christ-centered education that, through a wide range of academic majors leading to bachelor's and master's degrees, prepares our students for a life of world-changing leadership in church-related positions and in other professional fields. Arriving at Southeastern as people committed to following Jesus Christ, these students graduate ready either to enter graduate study or to serve throughout the world as ministers, teachers/educators, social service and mental health professionals, and business men and women.

Our programs of study span the following academic areas: behavioral and social sciences, business, communication arts, education, history, languages, leadership, music, natural sciences and mathematics, public policy, and religion.

Along with academic preparation, Southeastern provides many opportunities for voluntary service ministry in our local community and abroad. Frequent chapel services, a thriving music program, a variety of clubs and associations, and intercollegiate and intramural sports add to our students' full and busy lives.

Ideally, a student educated within Southeastern's Christian academic community displays these abilities and experiences:

- Orally and in writing, communicates with assessed competence and clarity;
- Demonstrates the knowledge, skills, and maturity necessary for the profession he or she has chosen;
- Has acquired scholarly habits and can perform skilled research.
- Has rendered, to the campus and the community, service appropriate to a Christian citizen
- Demonstrates a broad cultural perspective informed by a Christian worldview.

Saying “yes” to Christ, we believe, implies not only a zeal to serve, but a commitment to excellence in every activity. Southeastern University seeks to graduate men and women who combine faith, compassion, and humility with self-discipline and careful thinking; who take seriously the Biblically based obligation and privilege of being “the salt of the earth”; and who consequently approach every task – a class assignment, a volunteer project, an internship experience, a career – as an opportunity both to do well and to do good.

INSTITUTIONAL GOALS

1. To create and engender a community of authentic Christian faith conducive to successful living and learning. Every decision relative to this atmospheric commitment will be judged against the following core values:
 - a. Authentic Spirituality
Genuine devotion, rather than showmanship, sensuality, and self-centeredness inform our expressions of worship, especially in public.
 - b. A Faith-infused World View
Though certainly not claiming an artificial unanimity on all social and political issues, there is a God-centeredness at the heart of our world views.
 - c. Character Development for Ethics in Life
Our Biblical value system and world view must find expression in a truly Christian ethic. That ethical system must be celebrated in relationships, business, and decision making in all of life. Ethics as a belief system must also find the character to be acted upon.
 - d. A Family-oriented Community of Servants
Servanthood in leadership as well as relationship means practical kindness in the example of Christ. We do not believe it possible to fully serve God without serving humanity. We likewise believe it is not possible to fully serve humanity without serving the family of God in this place.
 - e. Professional and Academic Excellence
Our God is a God who “doeth all things well.” “Good enough for church work” is a repugnant phrase to us. Here at SEU and in the professions and ministries to follow, we hold excellence as being consistent with who God is.
 - f. Culturally Literate and Sensitive
If we are committed to serve God and the world in the genuine love of Christ, we must understand the world and its true needs. Sensitivity to the spirits of those around Him was at the heart of Christ's ministry. To understand and respond with sensitive love implies not compromise but compassion.
2. Preserve the evangelical and Pentecostal heritage and message of the Assemblies of God and provide positive direction for its future.

3. Provide a general education program which will equip students with quantitative, verbal, and technological skills; enhance their appreciation of their cultural and religious heritage; strengthen their commitment to the liberal arts; and give them a view of their responsibility as Christian scholars in the community and the wider world.
4. Provide sufficient religious education to enable students to be conversant in the Christian faith, to articulate their own beliefs, and to actualize their faith through consistent growth and practice by the integration of faith in all aspects of life.
5. Provide undergraduate programs of sufficient quality to prepare students for success in graduate and professional school and in the early stages of their careers.
6. Provide graduate programs in various areas which will prepare students for success in post-graduate programs.
7. Achieve the quality of instruction and resources necessary for the national accreditation of selected areas and the development of the additional graduate programs where appropriate.
8. Provide academic support through computer facilities, library resources, student support services and faculty development opportunities to ensure quality instruction and a challenging academic environment.
9. Prepare students for citizenship as Christians in the world through reflective community interactions and teach commitment to ideals of service, benevolence, civic virtue and social justice.
10. Increase the diversity of the faculty and student body, address the unique needs of a diverse campus population, and encourage academic inquiry into minority concerns.
11. Recruit, develop and retain a diverse community of teaching professionals, administrators and support staff who demonstrate excellence in their professional roles and effectively implement the mission of the university in their lifestyles and co-curricular involvement.
12. Continue the growth of the student enrollment and development of the capital assets to optimize student opportunities.

Provide quality academic, spiritual, cultural and recreational services to its various publics.

HISTORY OF SOUTHEASTERN UNIVERSITY

Southeastern University was founded in 1935 by Alabama District Superintendent J.C. Thames and other Southeastern District leaders. Originally named the Alabama Shield of Faith Institute, in 1936 it was renamed the South-Eastern Bible Institute. Guy Shields was the first president.

Originally located in a former high school building in New Brockton, Alabama, the school opened its doors to students on November 4, 1935, under the direction of four faculty members. Two years later, on May 22, 1937, the first graduation exercises were held. Seventeen students received diplomas for the two-year academic program.

SEBI continued classes in New Brockton until 1940 when a decision was made to consolidate the school with Beulah Heights Bible Institute in Atlanta, Georgia. The school was known from 1940 to 1942 as the Beulah Heights—South-Eastern Bible Institute. In the fall of 1942, Rev. Ralph Byrd allowed the school to relocate to his congregation at 301-7 Capital Avenue, SW in Atlanta where it then was again named the South-Eastern Bible Institute.

In 1946, the Board of Directors voted to secure a permanent location for the full development of the school. A new campus location was purchased later that year in Lakeland, Florida. The Atlanta campus was sold and development of the new site was begun. From 1946 to 1952, SEBI was located at the Lodwick School of Aeronautics in Lakeland. In 1952, the school moved to its present location at Longfellow Boulevard.

Student body growth continued at the new central Florida campus along with the academic program. SEBI became South-Eastern Bible College in 1956 when four-year Bachelor of Arts degree programs were begun. After adding education degrees, the College Board of Directors changed the school name to Southeastern College of the Assemblies of God in 1977.

In 1986, Southeastern was granted regional accreditation by the Southern Association of Colleges and Schools. Accreditation was reaffirmed in 1991 and 2001. In 2005, Southeastern College officially became Southeastern University, began offering its first Master's Degree programs, and formed the Colleges of Arts & Sciences, Business, Christian Ministries & Religion, and Education.

What began in 1935 as a Bible-training school is now the largest Assemblies of God educational institution in America, producing future Christian leaders in the fields of church ministries, education, medicine, law, business, communication, psychology, social work, literature, and music.

POINTS OF EXCELLENCE

2010 - 2011

- **The George O. Wood Jerusalem Studies Center** – Southeastern University offers an International Studies Program in Jerusalem that builds upon our solid tradition of Christian education and emphasizes the university’s commitment to servant leadership globally. The program enhances the current course offerings in the area of ministerial studies, history, and archaeology through on-site course work and research in Jerusalem. Located in downtown Jerusalem, just minutes from the Old City, the five-story state-of-the-art center can house 96 students each semester and was named in honor of Dr. George O. Wood, General Superintendent of the Assemblies of God.

- **The Longfellow Project** – This \$3 million project has radically changed entry to University property from North Crystal Lake Drive. The multi-faceted project included the widening and re-paving of Longfellow Boulevard, a landscaped median, decorative street lighting with underground utilities and sidewalks, and large, stately entry signs on either side of Longfellow at Crystal Lake.

- **SEU has nearly tripled its enrollment** in the last ten years, from just over 1,000 in Fall 1999 to nearly 3,000 students today.

- **A growing list of graduate programs** – Southeastern began offering two graduate degrees in 2005. Today, the university offers eight programs in the areas of religion, business, psychology, and education, offering graduate students the same blend of academics and spirituality that undergraduates have received for more than seven decades.

- **SEU Continues improvements to its campus facilities.** Since 1999, Southeastern has constructed 8 new buildings and remodeled 10. This accounts for 265,000 new square feet and 262,000 square feet that has been remodeled. 100% of all university-owned student housing is new or has been remodeled within the last 10 years. Southeastern’s total campus size has increased to 87 acres.

- **Southeastern athletics has appeared in 41 NCCAA II National Tournaments** since 2003, captured 30 South region titles, and won 11 National Championships. In addition, 111 athletes have been named NCCAA All Americans. Southeastern is now a member of the National Association of Intercollegiate Athletes (NAIA) and the National Christian College Athletic Association (NCCAA).

ACCREDITATION

Southeastern University is accredited by the **Commission on Colleges of the Southern Association of Colleges and Schools** to award baccalaureate and masters degrees. Contact the Commission on Colleges at 1866 Southern Lane, Decatur, Georgia 30033-4097 or call 404-679-4500 for questions about the accreditation of Southeastern University.

Other discipline specific accreditations and licensures:

- Council on Social Work Education (CSWE)
- International Assembly for Collegiate Business Education (IACBE)
- Florida Department of Education (FLDOE) – *Southeastern University is approved to grant degrees that meet certification requirements for a Florida teaching credential.*



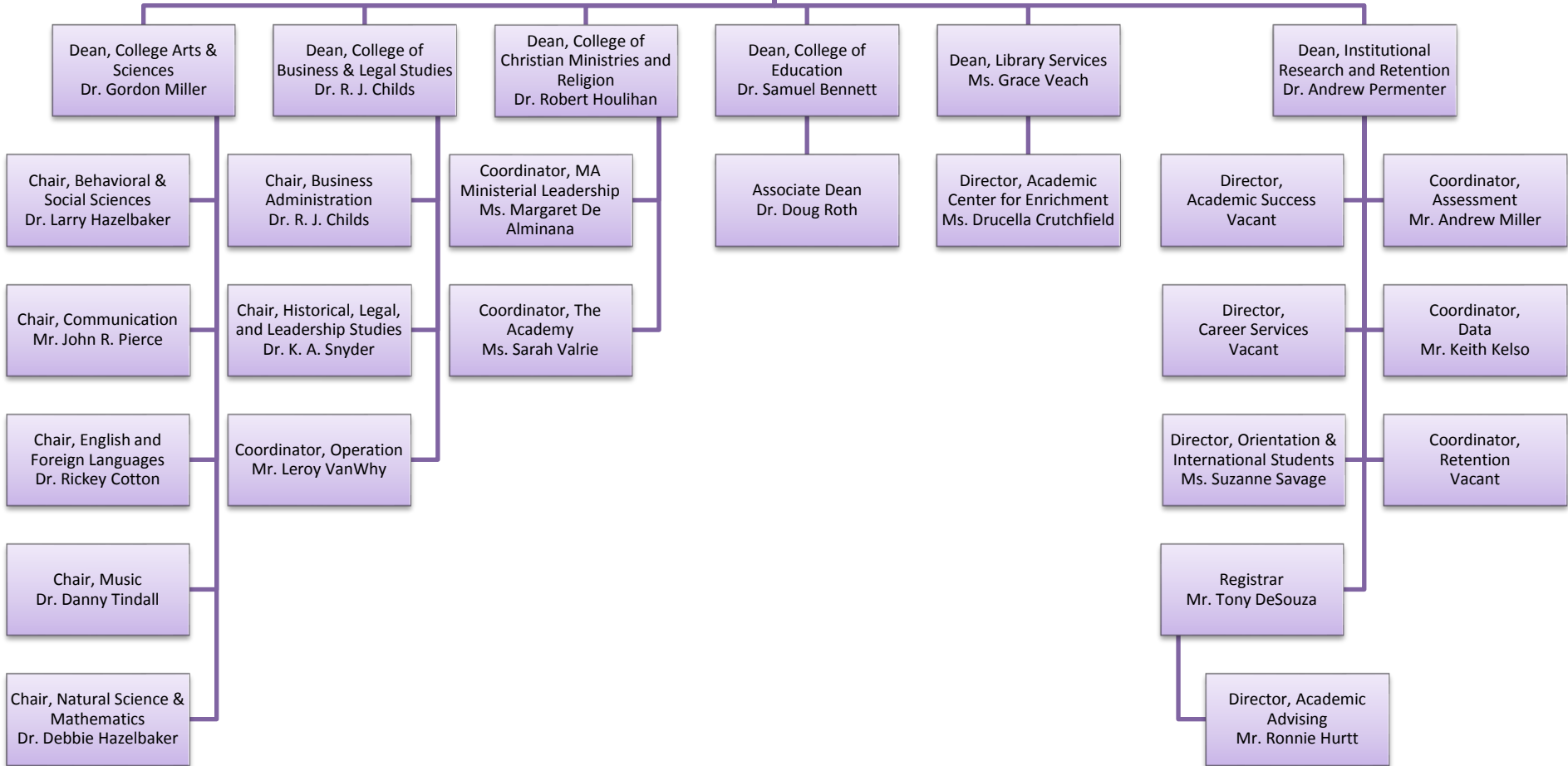
INSTITUTIONAL MEMBERSHIPS

- American Association of Colleges for Teacher Education (AACTE)
- American Association of Collegiate Registrars and Admissions Officers (AACRAO)
- American society of Composers, Authors, and Publishers (ASCAP)
- Association of American Colleges and Universities (AAC&U)
- Association of Christian Schools International (ACSI)
- Association of Departments of English
- Association for General and Liberal Studies (AGLS)
- Association of Institutional Research (AIR)
- Association to Advance Collegiate Schools of Business (AACSB International)
- The Alliance for Assemblies of God Higher Education (The Alliance)
- Broadcast Music, Inc. (BMI)
- Commission on Colleges of the Southern Association of College and Schools (COC)
- Council for Christian Colleges and Universities (CCCCU)
- Council of Colleges of Arts and Sciences (CCAS)
- Council of Independent Colleges (CIC)
- Council on Higher Education Accreditation (CHEA)
- Florida Association of Colleges and Universities (FACU)
- Florida Association of Colleges for Teacher Education (FACTE)
- Florida League of Christian Schools (FLOCS)
- Independent Colleges and Universities of Florida (ICUF)
- National Association of Independent Colleges and Universities (NAICU)
- National Association of Intercollegiate Athletes (NAIA)
- National Christian College Athletic Association (NCCAA)
- National Collegiate Honors Council
- National Religious Broadcasters (NRB)
- Society of European Stage Authors and Composers (SESAC)

Transitional Chancellor
Rev. Tommy Barnett

Acting President
Charles Kelly

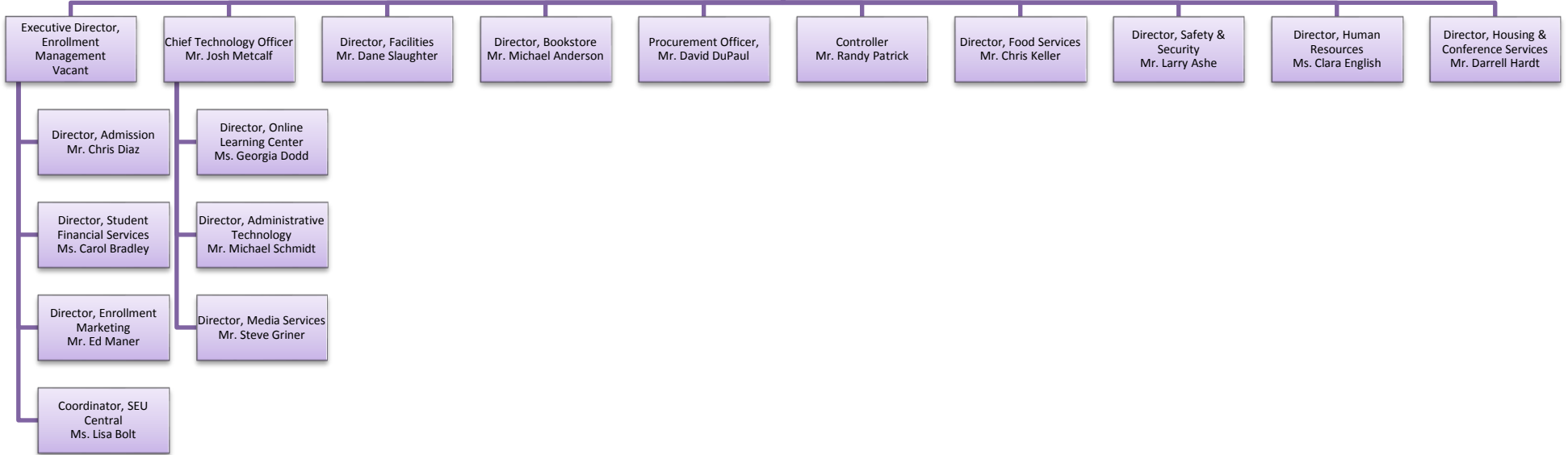
Vice President for
Academic Affairs
Dr. Edgar Lee

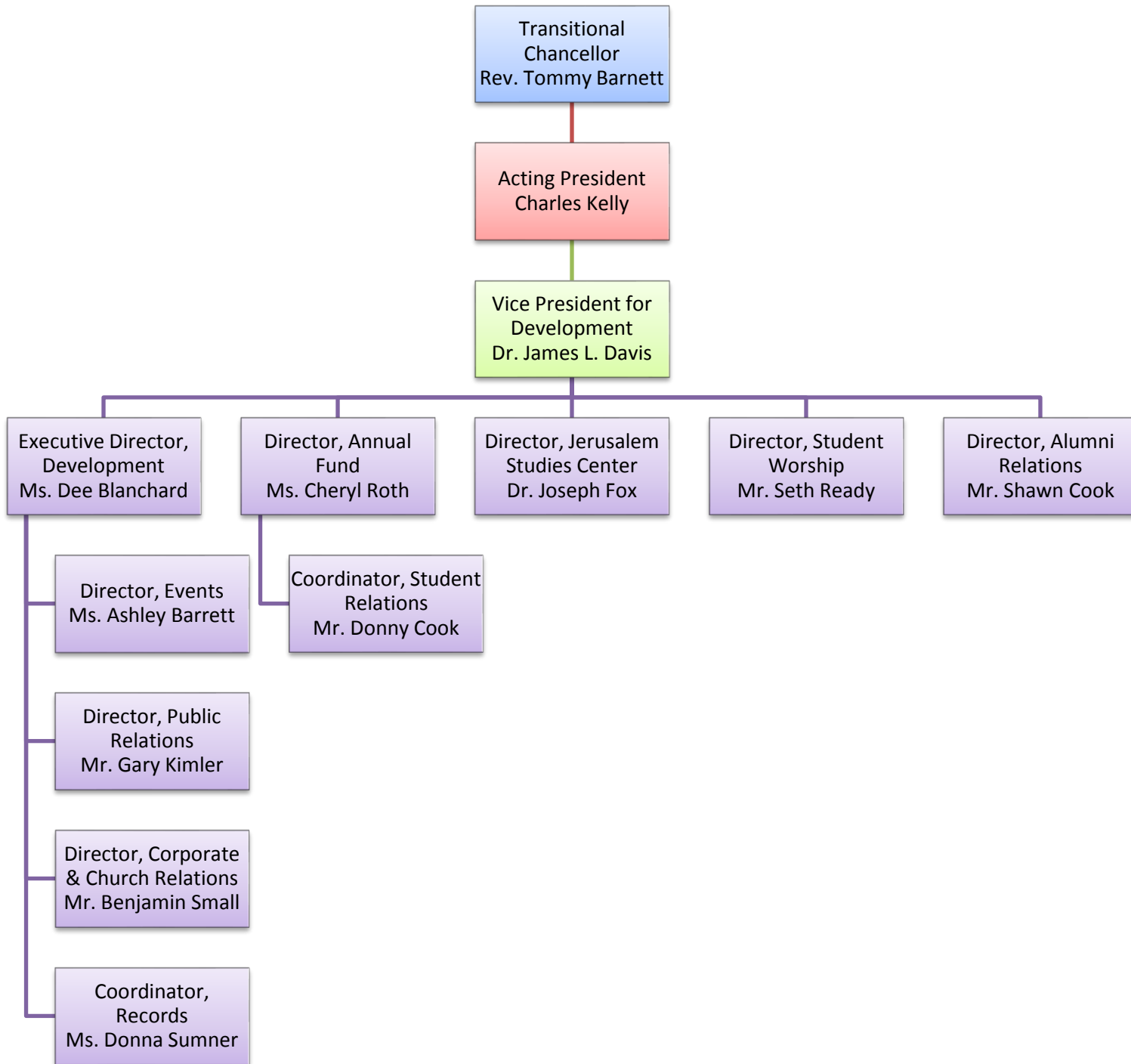


Transitional Chancellor
Rev. Tommy Barnett

Acting President
Charles Kelly

Vice President for
Finance &
Administration
Mr. John Kautz

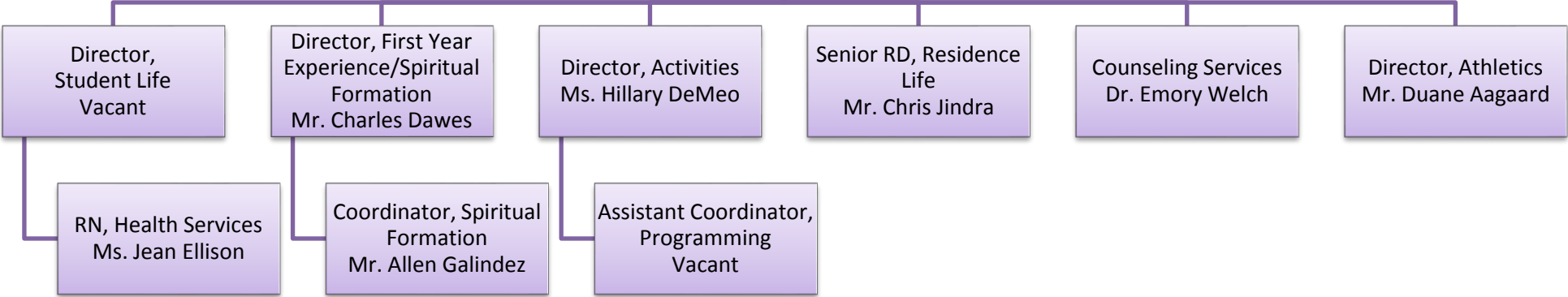




Transitional
Chancellor
Rev. Tommy Barnett

Acting President
Charles Kelly

Vice President for
Student Life
Vacant



ACADEMIC PROGRAMS

Undergraduate Programs

College of Arts and Sciences

Department of Behavioral and Social Sciences

Majors:	Trad.	Evening	Online
B.S. Human Services		✓	✓
B.S. Psychology	✓		
B.S.W. Social Work	✓		
Minors:			
Psychology	✓		

Department of Communication

Majors:	Trad.
B.A., B.S. Broadcasting	✓
B.A., B.S. Communication	✓
B.S. Film Studies	✓
B.A., B.S. Journalism/PR	✓
B.A., B.S. Theatre	✓
Minors:	
Communication	✓
Creative Writing	✓
Journalism/ Public Relations	✓
Musical Theatre	✓
Theatre	✓
Web Application & Development	✓

Department of English and Foreign Languages

Majors:	Trad.
B.A. English	✓
B.S. English & Intercultural Studies	✓
Minors:	
English	✓
French	✓
Greek	✓
Spanish	✓

Department of Music

Majors:	Trad.	Evening	Online
B.A. Music	✓		
B.S. Church Music	✓		
B.S. Music Business	✓		
B.S. Music Education	✓		
B.M. Music Performance	✓		
Minors:			
Church Music	✓		
Music	✓		
Music Technology	✓		

Department of Natural Science and Mathematics

Majors:	Trad.
B.S. Biology/ Pre-Med	✓
B.S. General Biology	✓
B.A. Mathematics	✓
Minors:	
Chemistry	✓
Mathematics	✓

College of Business and Legal Studies

Department of Business Administration

Majors:	Trad.	Evening	Online
B.S. Accounting	✓		
B.S. Finance	✓		
B.S. International Business	✓		
B.S. Management	✓	✓	✓
B.S. Management Info Systems	✓		
B.S. Marketing	✓	✓	✓
Minors:			
Business	✓		
Web Application & Development	✓		

Department of Historical, Legal, and Leadership Studies

Majors:	Trad.	Evening	Online
B.S. Criminal Justice	✓		✓
B.A., B.S. History	✓		
B.S. Leadership	✓		
B.S. Public Policy	✓		
Minors:			
Criminal Justice	✓		
History	✓		
Pre-Law	✓		
Public Policy	✓		

Undergraduate Programs

College of Christian Ministries and Religion

	Trad.	Evening	Online
Majors:			
B.S. Church Ministries	✓		
B.A. Interdisciplinary Studies	✓		
B.A. Missional Ministries	✓		
B.S. Practical Theology	✓	✓	✓
Minors:			
Bible	✓		
Children's Ministry	✓		
Evangelism	✓		
Leadership	✓		
Missions	✓	✓	✓
Pastoral Ministry	✓	✓	✓
Pre-Seminary Studies	✓		
Youth Ministry	✓	✓	✓
Youth (Non-Religion Majors)	✓		

College of Education

	Trad.	Evening	Online
Majors:			
B.S. Elementary Education	✓		✓
B.S. Exceptional Student Ed.	✓		
B.S. Music Education	✓		
B.S. Secondary Biology (6-12)	✓		
B.S. Secondary English (6-12)	✓		
B.S. Sec. Mathematics (6-12)	✓		
B.S. Sec. Social Science (6-12)	✓		
B.S. Sports & Rec. Management	✓		
Minors:			
Athletic Coaching	✓		
Early Childhood Education	✓		
Elementary Education	✓		
ESOL Education	✓		
Exceptional Student Education	✓		
Middle Grades Education	✓		
Physical Education	✓		
Secondary Education	✓		

Graduate Programs

College of Business and Legal Studies

	Trad.	Evening	Online
Master of Business Administration		✓	✓

College of Christian Ministries and Religion

	Trad.	Evening	Online
MA in Ministerial Leadership		✓	✓

College of Education

	Trad.	Evening	Online
MEd in Elementary Education			✓
MEd in Educational Leadership			✓
MEd in Teaching and Learning			✓

Department of Behavior and Social Sciences

	Trad.	Evening	Online
MS in Professional Counseling		✓	
MS in School Counseling		✓	
MA in Human Services		✓	

Other Programs

ARMY ROTC – In conjunction with Florida Southern College

The Academy – Leading to Certification, Licensure, and Ordination in the Assemblies of God

Alternative Certification Program – Teaching Certification (summer program)

ATHLETICS

Southeastern University is a dual member of the National Association of Intercollegiate Athletes (NAIA) and the National Christian College Athletic Association (NCCAA)

Varsity Sports

Men's

Baseball
Basketball
Golf
Soccer

Women's

Basketball
Cheerleading
Soccer
Tennis
Volleyball

Intramural Sports

Men's and Women's

Basketball
3-on-3 Basketball
Flag Football
Powder Puff Football

Soccer
Softball
Ultimate Frisbee
Volleyball

LEADERSHIP POSITIONS

Athletic Leadership Institute
Chapel Assistants
Community Leaders
Department of Spiritual Formation Student Leaders

First Year Advisors
Resident Assistant
Southeastern Singers
Student Body Leadership Council

CLUBS & ORGANIZATIONS

ACE Student Workers	Library Student Workers
Alpha Chi	Phi Alpha Honor Society
Army ROTC	Pre Health Service Organization
Athletic Leadership Institute	Preaching Team
Chamber Singers	Psi Chi
Chapel Assistants	RAW TV
College Republicans	Remnant Oasis
College Students for Israel	Resident Assistants
Collegiate Music Educators National Conference	Sigma Beta Delta
Community Leaders	Sigma Chi Pi
Commuter Life	Social Work Club
Concert Choir	Soul Food
Destinations	Southeastern Radio, WSEU
Dorm Senators	Southeastern Singers
DSF Student Leaders	Spanish Club
Ethnos International	Sports Management
Executive Internship Program (EIP)	Student Body Leadership Council
Fire TV Network	Student Christian Medical & Dental Association
FIRST Society	Students in Free Enterprise (SIFE)
First Teams Leaders & Mentors	Taekwondo
Florida Public Relations Association	The Southeastern Times
Freedom Center	The Torch Staff
FX	Trash Mountain Project
Global Evangelism Outreach (G.E.O.)	Unpland Improv
Honors Program	Wind Ensemble
Jazz Band	Worship Teams
Kappa Delta Pi	X-Community

2010 – 2011 Tuition and Fees

Undergraduate

Tuition	Semester	Year
Less than 12 hours	\$660/hour	\$660/hour
12-17 hours	\$7,915.00	\$15,830.00
More than 17 hours	\$7,915.00 plus \$660 for each additional hour above 17 hours	\$15,830.00 plus \$660 for each additional hour above 17 hours
General Student Fee	\$300.00	\$600.00
<hr/>		
Total for Off-Campus	\$8,215.00	\$16,430.00
Residence Halls		
Valencia	\$1,929.00	\$3,858.00
Bauer, Bethany & South Pointe	\$1,929.00	\$3,858.00
Aventura, Destino & Esperanza	\$2,142.00	\$4,284.00
Other Housing	\$2,282.00, \$2,407.00, or \$2,656.00	\$4,564.00, \$4,814.00, or \$5,312.00
Meal Plans		
Carte Blanche Meal Plan	\$2,074.73	\$4,149.46
20-Meal Plan	\$2,020.94	\$4,041.88
14-Meal Plan	\$1,945.36	\$3,890.72
10-Meal Plan	\$1,925.42	\$3,850.84
Commuter Meal Plans		
39-Meal Plan	\$319.58	\$639.16
49-Meal Plan	\$401.52	\$803.04
85-Meal Plan	\$696.52	\$1,393.04
Room and Meal Plan*	\$3,950.00	\$7,900.00
<hr/>		
Total for On-Campus*	\$12,165.00	\$24,330.00

**Based on 12-17 Hrs, 20-meal plan, and Bethany or Bauer Halls occupancy*

Other Estimated Expenses	Year
Books and supplies	\$1,200.00
Misc. (transportation, laundry, entertainment, etc...)	\$2,400.00

2010 – 2011 Tuition and Fees

Graduate

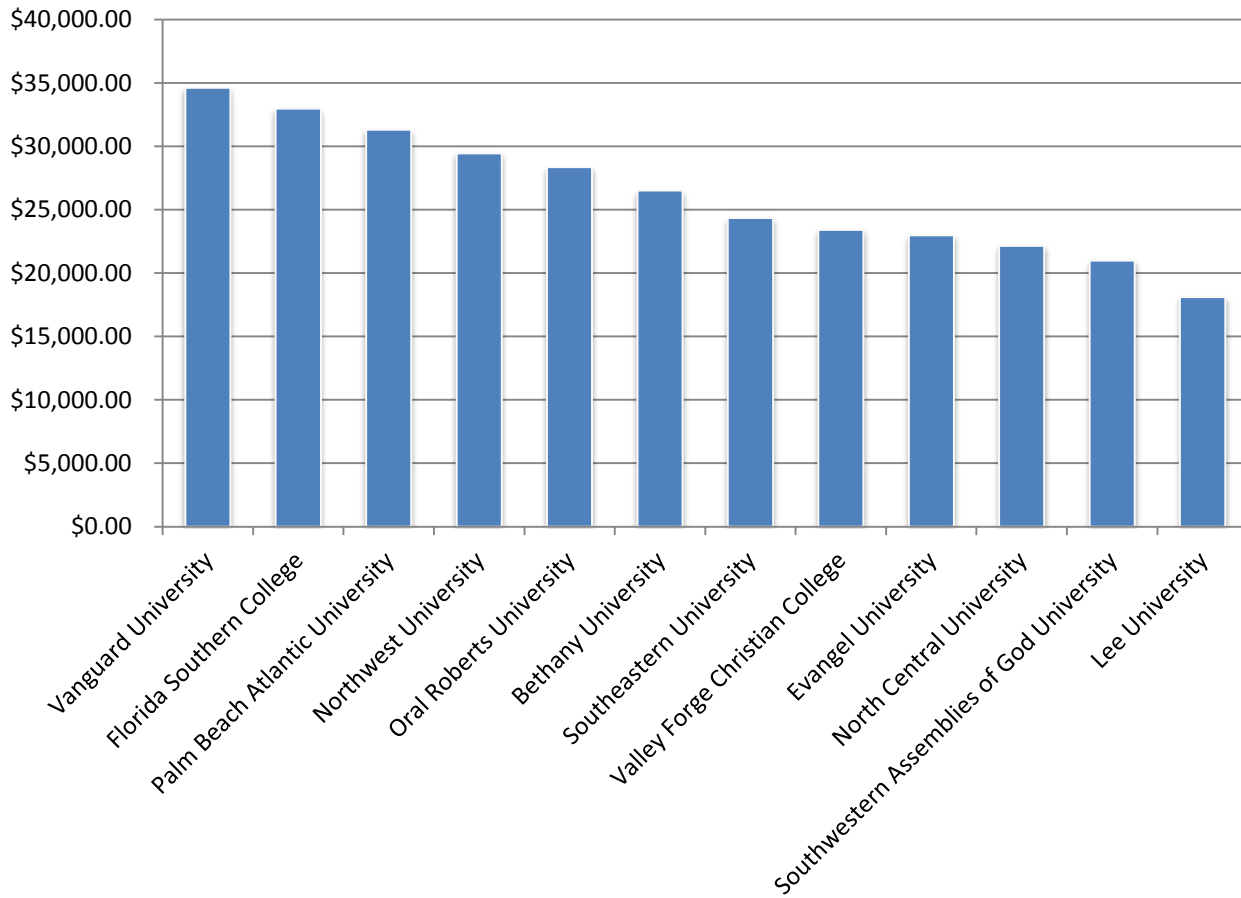
<i>Program</i>	<i>Tuition</i>	<i>Credit Hours</i>	<i>Total Tuition</i>
Master of Arts in Ministerial Leadership	\$495/hour	36	\$17,820
Master of Arts in Ministerial Leadership-Executive Track (2010)	\$525/hour	36	\$18,900
Master of Arts in Human Services	\$495/hour	36	\$17,820
Master of Business Administration	\$495/hour	36	\$17,820
Master of Education in Educational Leadership	\$325/hour	36	\$11,700
Master of Education in Elementary Education	\$325/hour	33	\$10,725
Master of Education in Teaching and Learning (Online)	\$325/hour	36	\$11,700
Master of Science in Professional Counseling	\$495/hour	60	\$29,700
Master of Science in School Counseling	\$495/hour	60	\$29,700
Average Graduate Tuition Per Hour	\$442/hour		
Average Annual General Student Fee	\$300		

2010 – 2011 Tuition/Room & Board Comparison

Southeastern University compared to other schools

School	Annual Tuition/Room & Board
Vanguard University (AG)	\$34,616.00
Florida Southern College	\$32,972.00
Palm Beach Atlantic University	\$31,300.00
Northwest University (AG)	\$29,444.00
Oral Roberts University	\$28,348.00
Bethany University (AG)	\$26,500.00
* Southeastern University	\$24,330.00
Valley Forge Christian College (AG)	\$23,421.00
Evangel University (AG)	\$22,990.00
North Central University (AG)	\$22,156.00
Southwestern Assemblies of God University (AG)	\$20,983.00
Lee University	\$18,120.00

*** Southeastern's tuition ranked 96th out of the 106 CCCU Schools in 2009.**



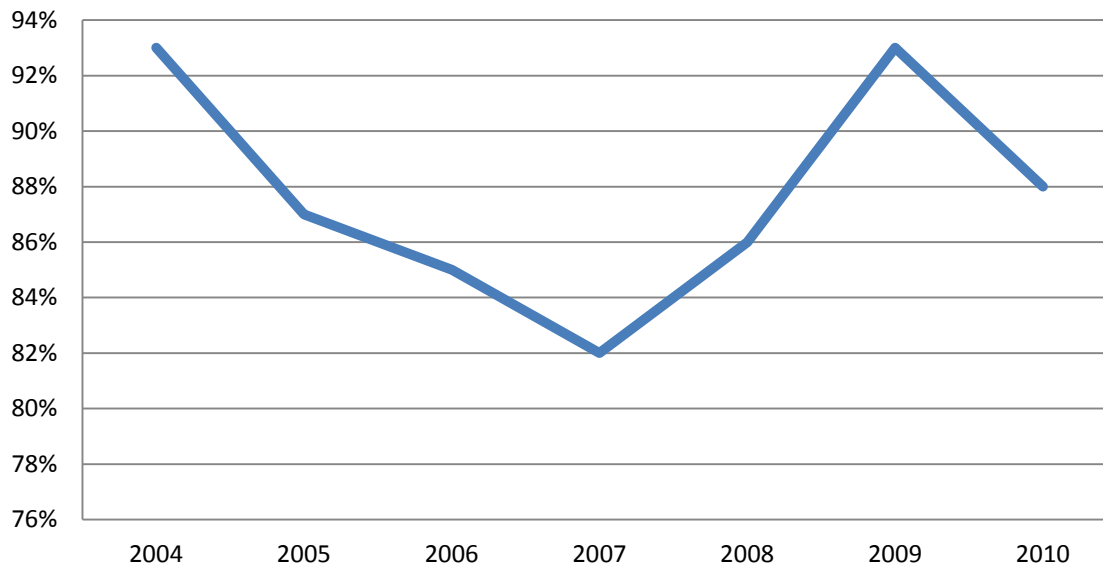
Financial Aid – Entering Freshmen

Fall 2004 – Fall 2010

	2004	2005	2006	2007	2008	2009	2010
% Receiving any Financial Aid	93%	87%	85%	82%	86%	93%	88%
% Receiving Federal Grants	32%	26%	24%	25%	30%	37%	42%
Average amount of Federal Grants	\$2,834	\$2,905	\$2,977	\$4,381	\$5,177	\$4,609	\$4,727
% Receiving State/Local Grants	50%	52%	47%	51%	50%	52%	55%
Average amount of State/Local Grants ¹	\$3,611	\$4,219	\$4,464	\$5,352	\$5,416	\$4,406	\$4,330
% Receiving Institutional Grants	57%	52%	59%	57%	66%	76%	80%
Average amount of Institutional Grants	\$2,223	\$2,001	\$2,225	\$3,200	\$4,165	\$6,067	\$5,644
% Receiving Student Loans	86%	72%	77%	65%	69%	83%	65%
Average amount of Student Loans	\$2,528	\$6,870	\$6,220	\$12,946	\$13,995	\$10,147	\$12,395

¹ In 2009, the State of Florida decreased funding for the Florida Resident Access Grant and Bright Futures Academic Programs.

% of Students Receiving Financial Aid



Enrollment

Fall 2001 – Fall 2010 Graduate and Undergraduate

Undergraduate

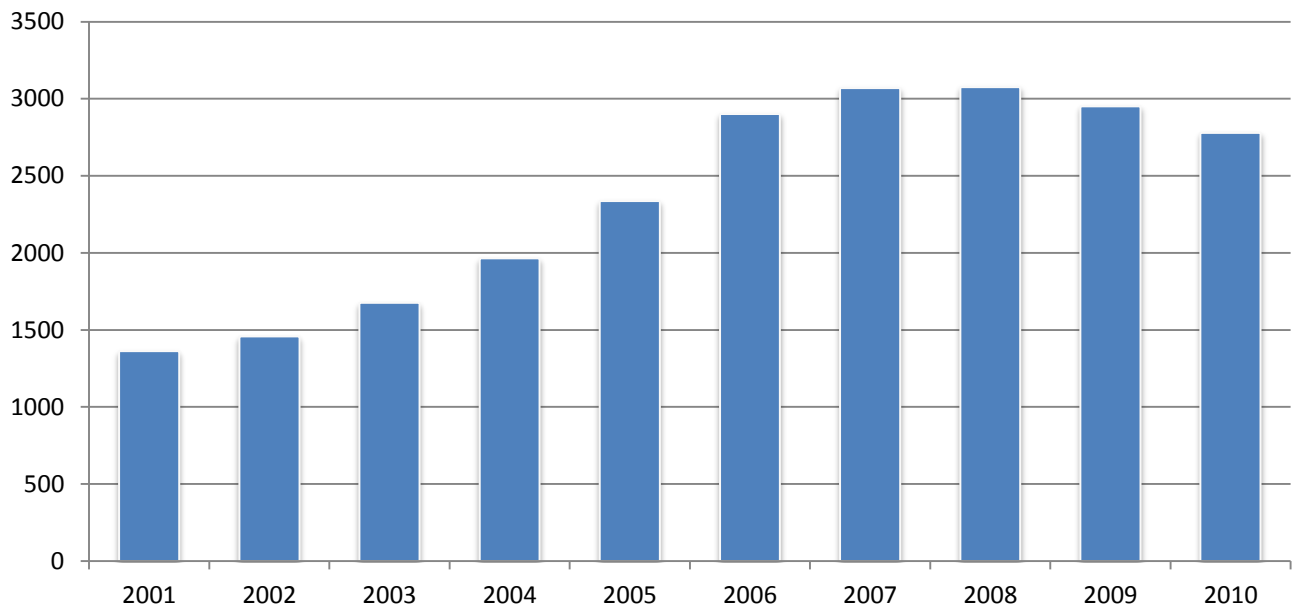
2001	2002	2003	2004	2005	2006	2007	2008	2009	2010
1,363	1,458	1,675	1,964	2,297	2,810	2,931	2,867	2,665	2,510

Graduate

	2005	2006	2007	2008	2009	2010
Master of Arts in Ministerial Leadership	39	59	54	64	63	41
Master of Business Administration		32	52	60	49	37
Master of Education in Educational Leadership				14	22	23
Master of Education in Elementary Education			6	24	24	14
Master of Education in Teaching and Learning					56	104
Master of Arts in Human Services					2	9
Master of Science in Professional Counseling			12	19	29	31
Master of Science in School Counseling				3	6	4
Non-Degree Seeking			14	24	34	6
	39	91	138	208	285	269

Total Students

2001	2002	2003	2004	2005	2006	2007	2008	2009	2010
1,363	1,458	1,675	1,964	2,336	2,901	3,069	3,075	2,950	2,779*



*Prior year calculations included continuing Academy students, which would add 88 students, for a total of 2,867.

Enrollment – Full-Time Equivalency

Fall 2001 – Fall 2010 Graduate and Undergraduate

Undergraduate

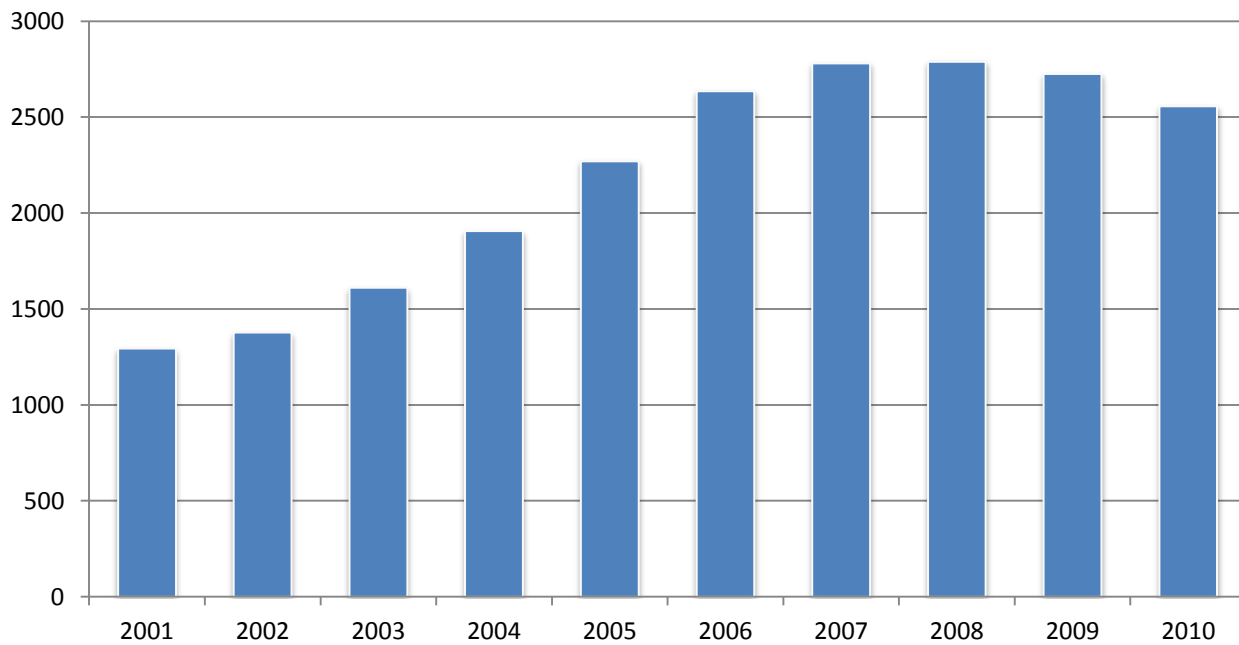
2001	2002	2003	2004	2005	2006	2007	2008	2009	2010
1,295	1,378	1,611	1,906	2,225	2,551	2,664	2,618	2,494	2,348

Graduate

2005	2006	2007	2008	2009	2010
46	86	116	171	231	209

Total Students

2001	2002	2003	2004	2005	2006	2007	2008	2009	2010
1,295	1,378	1,611	1,906	2,271	2,636	2,780	2,789	2,725	2,557



**FTE – 12 part-time hours equal one full-time equivalent student*

Enrollment by Major

Fall 2010 Total Enrollment

College of Arts & Sciences

College of Arts & Sciences Enrollment: 697

Department of Behavioral & Social Sciences

Human Services	122
Psychology (BA)	10
Psychology (BS)	85
Social Work	65

Department Total 282

Department of Communication

Broadcasting (BA)	8
Broadcasting (BS)	21
Communication (BA)	13
Communication (BS)	42
Film Studies	38
Journalism/PR (BA)	17
Journalism/PR (BS)	24
Theatre (BA)	8
Theatre (BS)	8

Department Total 179

Department of English & Foreign Language

English (BA)	30
English & Intercultural Studies	28

Department Total 58

Department of Music

Music Performance (Instrumental)	6
Music Performance (Piano)	4
Music Performance (Voice)	5
Church Music (BS)	26
Music (BA)	7
Music Business (BS)	12
Music Education (BS)	25

Department Total 85

Department of Natural Sciences & Mathematics

General Biology	14
Biology/Pre-Med	69
Mathematics (BA)	7
Pre-Biology	2
Pre-Mathematics	1

Department Total 93

College of Business & Legal Studies

College of Business & Legal Studies Enrollment: 376

Department of Business Administration

Accounting	22
Business and Professional Leadership	28
Finance	17
International Business	24
Management	89
Management Information Systems	13
Marketing	30
Pre-Business	77

Department Total 300

Department of Historical, Legal, & Leadership Studies

Criminal Justice (BA)	2
Criminal Justice (BS)	44
History (BA)	21
History (BS)	3
Business Leadership	5
Public Policy (BS)	1

Department Total 76

Enrollment by Major

Fall 2010 Total Enrollment

College of Christian Ministries & Religion

College of Christian Ministries & Religion Enrollment: 352

Church Leadership (BS)	14	Missional Ministries (BA)	20
Church Ministries (BS)	70	Practical Theology (BS)	206
Interdisciplinary Studies (BA)	42		

College of Education

College of Education Enrollment: 289

Elementary Education (K-6)	140	Secondary Biology (BS)	4
Exceptional Student Education	51	Secondary English (BS)	23
Middle Grades English	1	Secondary Mathematics (BS)	6
Middle Grades General Science	4	Secondary Social Sciences (BS)	18
Middle Grades Mathematics	7	Sports & Recreations Management (BS)	33
Middle Grades Social Science	2		

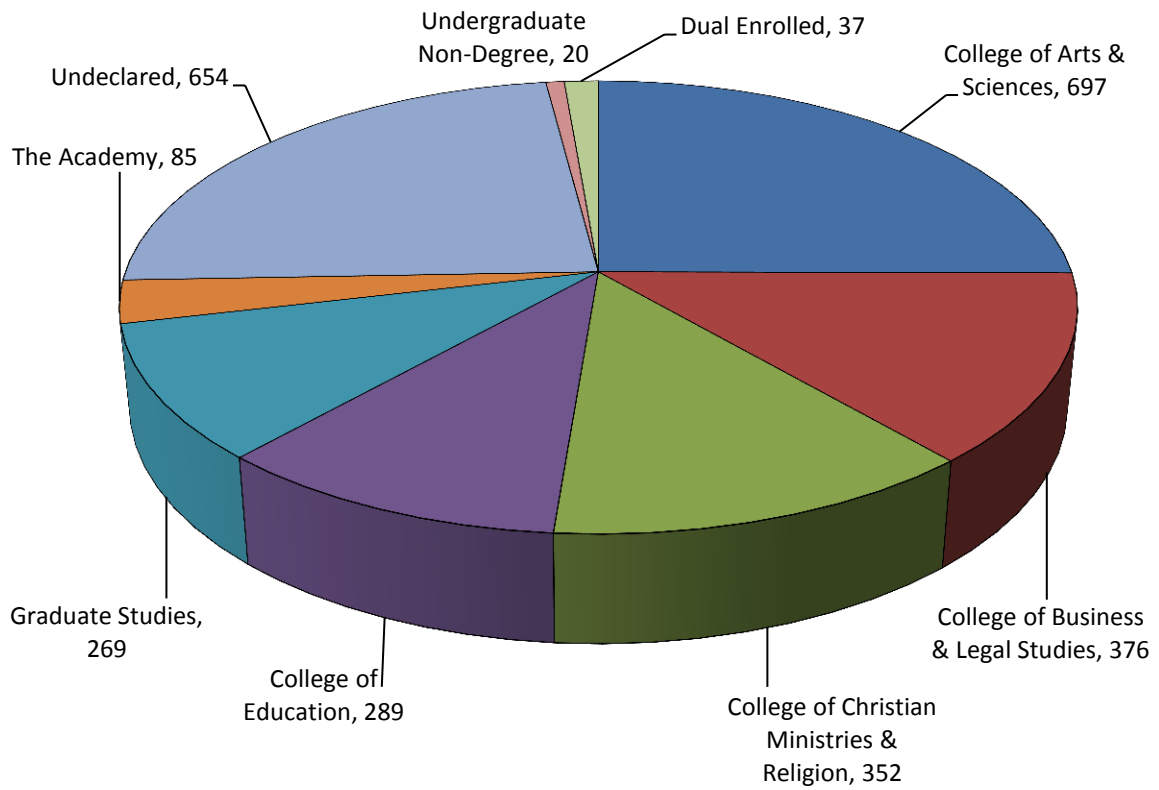
Totals

College of Arts & Sciences	697
College of Business & Legal Studies	376
College of Christian Ministries & Religion	352
College of Education	289
	1714
Graduate Studies	269
The Academy	85
Undeclared	654
Undergraduate Non-Degree	20
Dual Enrolled	37
	1065
Total University Enrollment	2779

**22.6% of declared majors are in the College of Christian Ministries and Religion.*

Enrollment by Major

Fall 2010 Total Enrollment



Enrollment by Gender

Fall 2001 – 2010 Graduate and Undergraduate

Undergraduate

	2001	2002	2003	2004	2005	2006	2007	2008	2009	2010
Male	653	638	782	882	994	1,199	1,234	1,208	1,127	1,070
Female	710	768	893	1,081	1,290	1,611	1,697	1,659	1,538	1,440

Graduate

	2005	2006	2007	2008	2009	2010
Male	31	77	80	118	111	80
Female	8	14	58	90	174	189

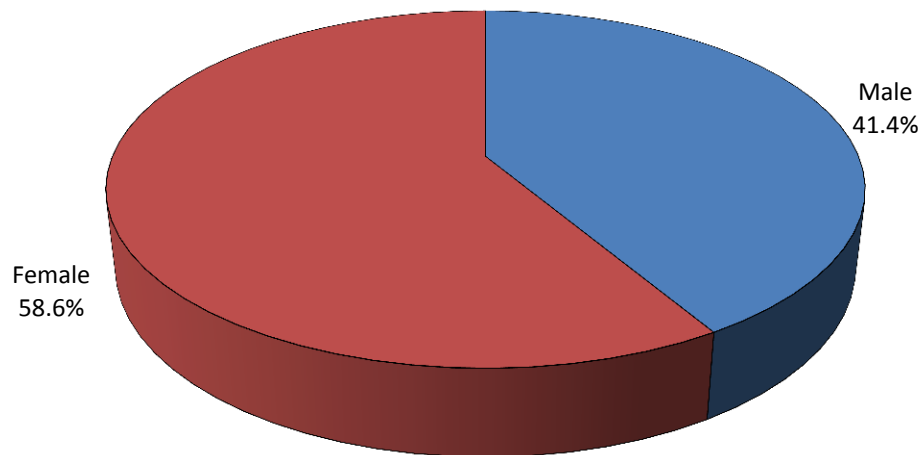
Total Students

	2001	2002	2003	2004	2005	2006	2007	2008	2009	2010
Male	653	638	782	882	1,025	1,276	1,314	1,326	1,238	1,150
Female	710	768	893	1,081	1,298	1,625	1,755	1,749	1,712	1,629

Percentage of Total Students

	2001	2002	2003	2004	2005	2006	2007	2008	2009	2010
Male	47.9%	45.4%	46.7%	44.9%	44.1%	44.0%	42.8%	43.1%	42.0%	41.4%
Female	52.1%	54.6%	53.3%	55.1%	55.9%	56.0%	57.2%	56.9%	58.0%	58.6%

Percentage by Gender



Enrollment by State of Residence

Fall 2010

<i>State</i>	<i>Number of Students</i>	<i>State</i>	<i>Number of Students</i>
Alabama	27	Nebraska	1
Alaska	4	Nevada	0
Arizona	4	New Hampshire	12
Arkansas	5	New Jersey	38
California	20	New Mexico	3
Colorado	7	New York	57
Connecticut	28	North Carolina	55
Delaware	6	North Dakota	2
District of Columbia	1	Ohio	73
Florida	1,787	Oklahoma	2
Georgia	103	Oregon	2
Hawaii	3	Pennsylvania	77
Idaho	0	Puerto Rico	0
Illinois	27	Rhode Island	1
Indiana	14	South Carolina	29
Iowa	4	South Dakota	1
Kansas	6	Tennessee	21
Kentucky	10	Texas	23
Louisiana	10	Utah	0
Maine	5	Vermont	4
Maryland	30	Virginia	56
Massachusetts	23	Washington	2
Michigan	27	West Virginia	9
Minnesota	8	Wisconsin	15
Mississippi	8	Wyoming	3
Missouri	10	Unknown	1
Montana	3		

Percentage from the State of Florida: 64.3%

Enrollment by Racial/Ethnic Group

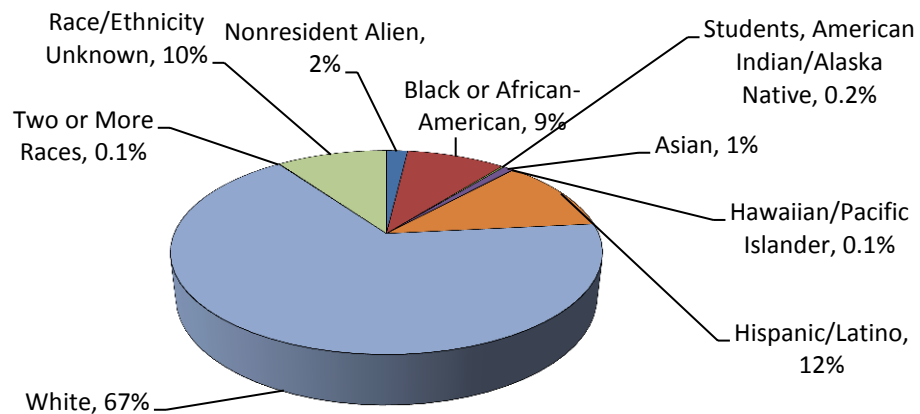
Fall 2004 – Fall 2010 Total Enrollment

Racial/Ethnic Group	2004	2005	2006	2007	2008	2009	2010
Nonresident Alien	7	5	3	3	2	2	53
Black or African-American	116	163	198	203	216	258	245
American Indian/Alaska Native	8	10	7	6	3	7	6
Asian [†]	35	35	35	33	32	32	25
Pacific Islander [†]							2
Hispanic/Latino	207	280	310	331	344	342	320
White	1,472	1,707	1,902	1,940	1,979	1,943	1,852
Two or more Races [†]							2
Race/Ethnicity unknown	119	136	446	553	499	366	274
Total	1,964	2,336	2,901	3,069	3,075	2,950	2,779

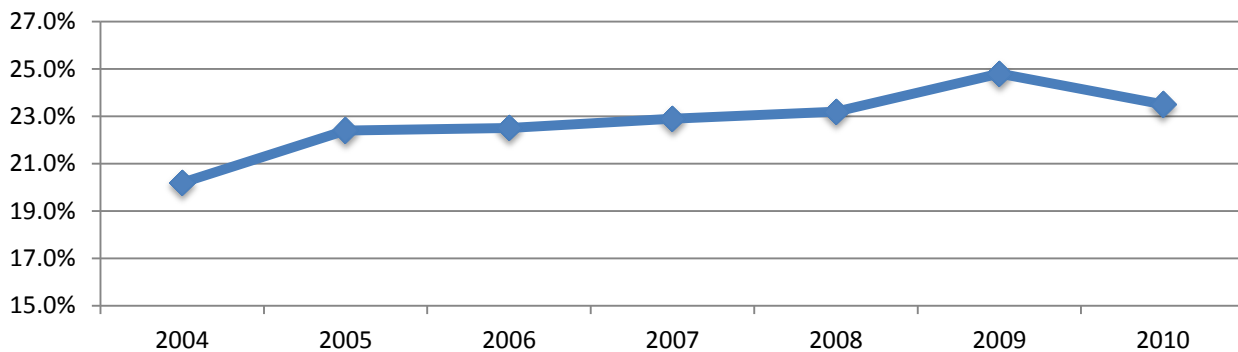
Ethnic Minority Percentage **20.2%** **22.4%** **22.5%** **22.9%** **23.2%** **24.8%** **23.5%**

**Ethnicity Unknown not included in Minority Percentage calculations*

[†] Prior to 2010 Race & Ethnicity was reported under the old categories which combined Asian & Pacific Island groups and did not include Two or More Races.



Ethnic Minority Percentage



Enrollment – International Students/Nations

Fall 2010

Country	Totals	Country	Totals
Australia	1	Korea (North)	1
Austria	1	Korea (South)	2
Bahamas	11	Mexico	2
Belgium	1	Netherlands Antilles	2
Bermuda	1	Nigeria	3
Brazil	8	Norway	2
Burma/Myanmar	1	Paraguay	1
Cameroon	2	Peru	2
Canada	18	Philippines	1
Cayman Islands	2	South Africa	1
China	1	Sweden	1
Colombia	3	United Arab Emirates	1
Costa Rica	2	United Kingdom	2
Cuba	1	Venezuela	4
Czech Republic	1	Zimbabwe	1
Ecuador	3	Unknown	2
Finland	1		
Gabon	1		
Germany	3		
Ghana	1		
Guatemala	5		
Haiti	10		
India	1		
Italy	1		
Jamaica	4		

Total International Students 112

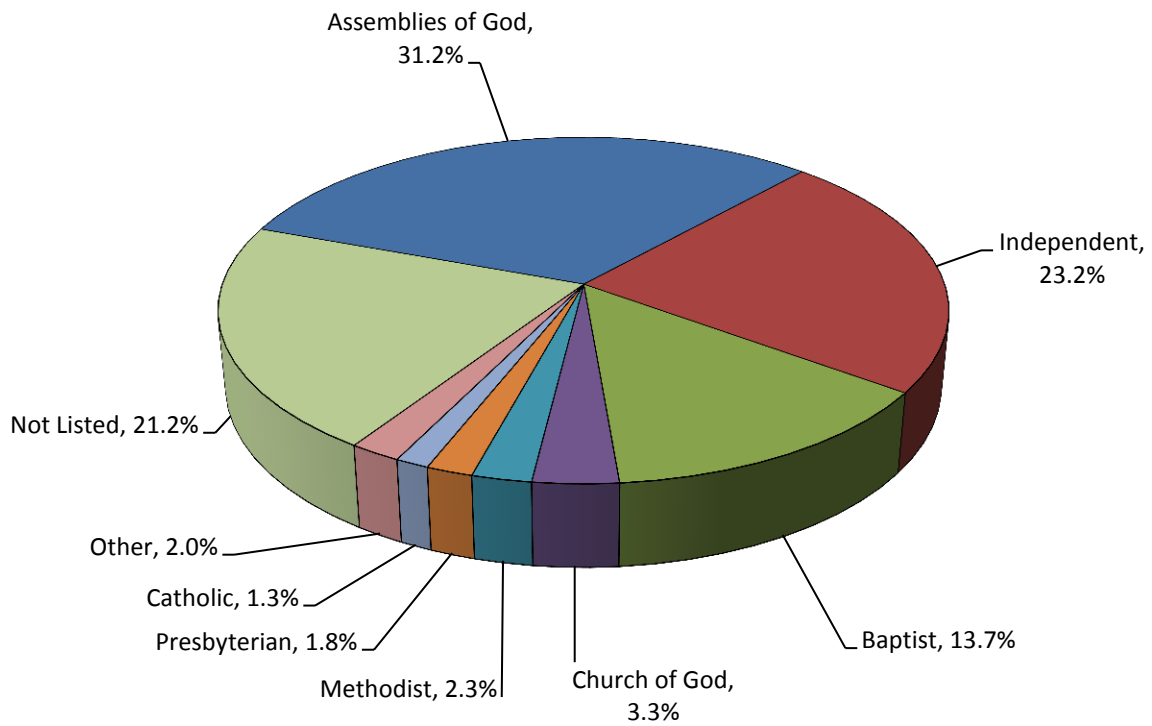
Percent of Total Enrollment 4.0%

****International students represent 40 countries***

Enrollment by Denomination

Fall 2010

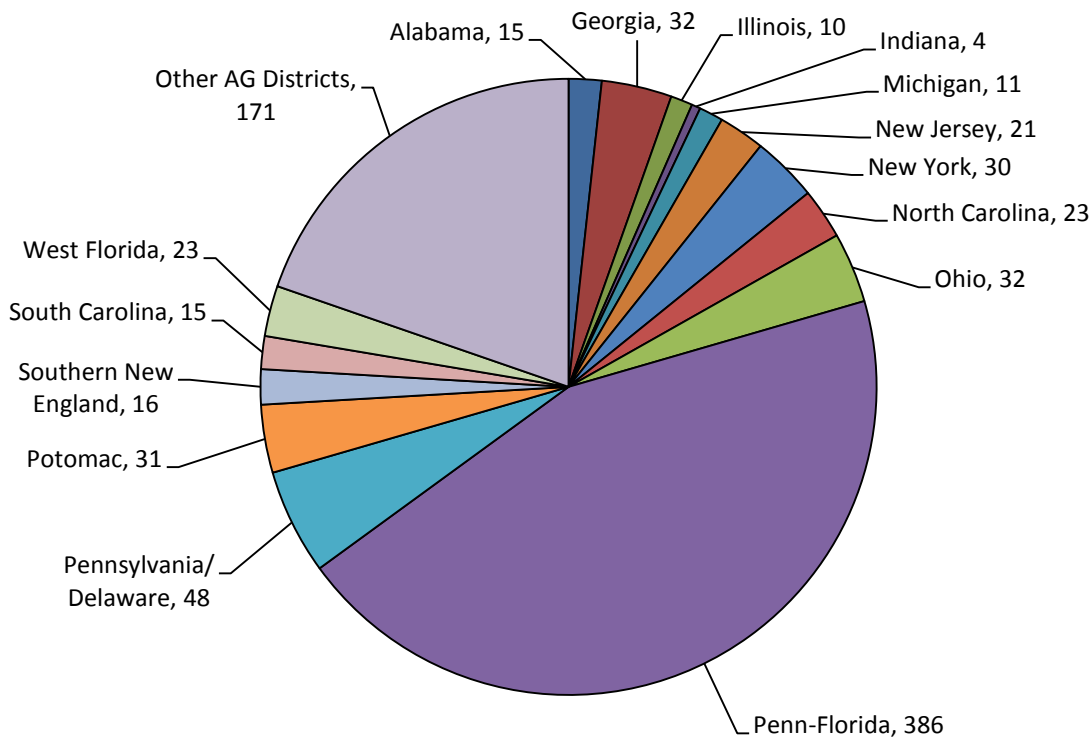
Religion	Number of Students	Percentage of Students
Assemblies of God	868	31.2%
Independent	644	23.2%
Baptist	382	13.7%
Church of God	91	3.3%
Methodist	65	2.3%
Presbyterian	50	1.8%
Catholic	35	1.3%
Other	55	2.0%
Not Listed	589	21.2%



Enrollment by AG District

Fall 2010

<i>District</i>	<i>Number of Students</i>
Alabama	15
Georgia	32
Illinois	10
Indiana	4
Michigan	11
New Jersey	21
New York	30
North Carolina	23
Ohio	32
Penn-Florida	386
Pennsylvania/Delaware	48
Potomac	31
Southern New England	16
South Carolina	15
West Florida	23
Other AG Districts	171
Total AG Students	868

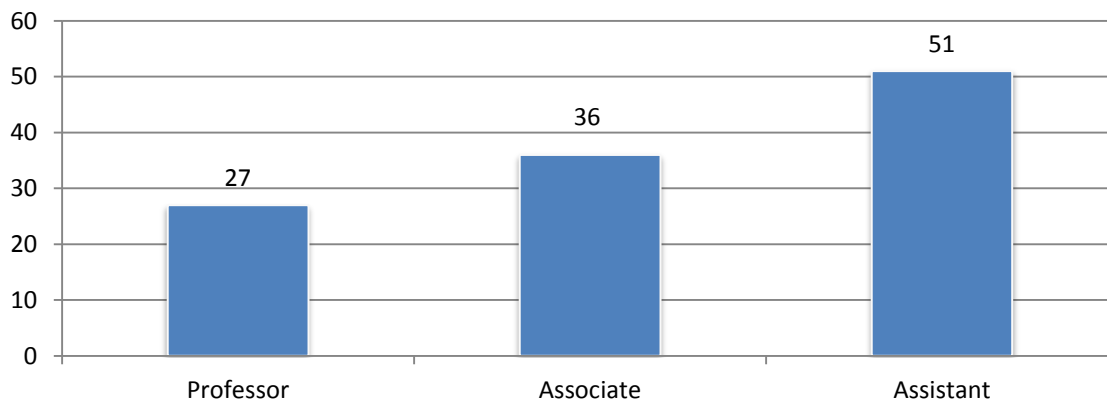


Faculty Roster – Division and Rank

Fall 2010

<i>Division</i>	<i>M.I.R.</i>	<i>Professor</i>	<i>Associate Professor</i>	<i>Assistant Professor</i>	<i>Total</i>
College of Arts & Sciences					50
Behavioral and Social Sciences		1	6	4	11
Communication			3	5	8
English and Foreign Languages		1	1	8	10
Music		2	4	4	10
Natural Sciences and Mathematics		2	4	5	11
College of Business and Legal Studies					21
Business Administration		5	4	6	15
Historical, Legal, and Leadership Studies		1	3	2	6
College of Christian Ministries and Religion	1	7	6	3	17
College of Education		1	2	9	12
Library Faculty			2	3	5
Deans/ Administration		7	1	2	10
Instructional Faculty	1	20	33	46	100
Percentage of Instructional Faculty	1.0%	20.0%	33.0%	46.0%	
Total Faculty	1	27	36	51	115
Percentage of Total Faculty	0.8%	23.5%	31.3%	44.3%	
Instructional Faculty w/ Terminal Degrees	0	20	30	17	66
Percentage of Rank Category		100.0%	90.9%	37.0%	66.0%
Total Faculty with Terminal Degrees	0	26	30	18	73
Percentage of Rank Category		96.3%	83.3%	35.3%	63.5%

Total Faculty by Rank



Student to Faculty Ratio*

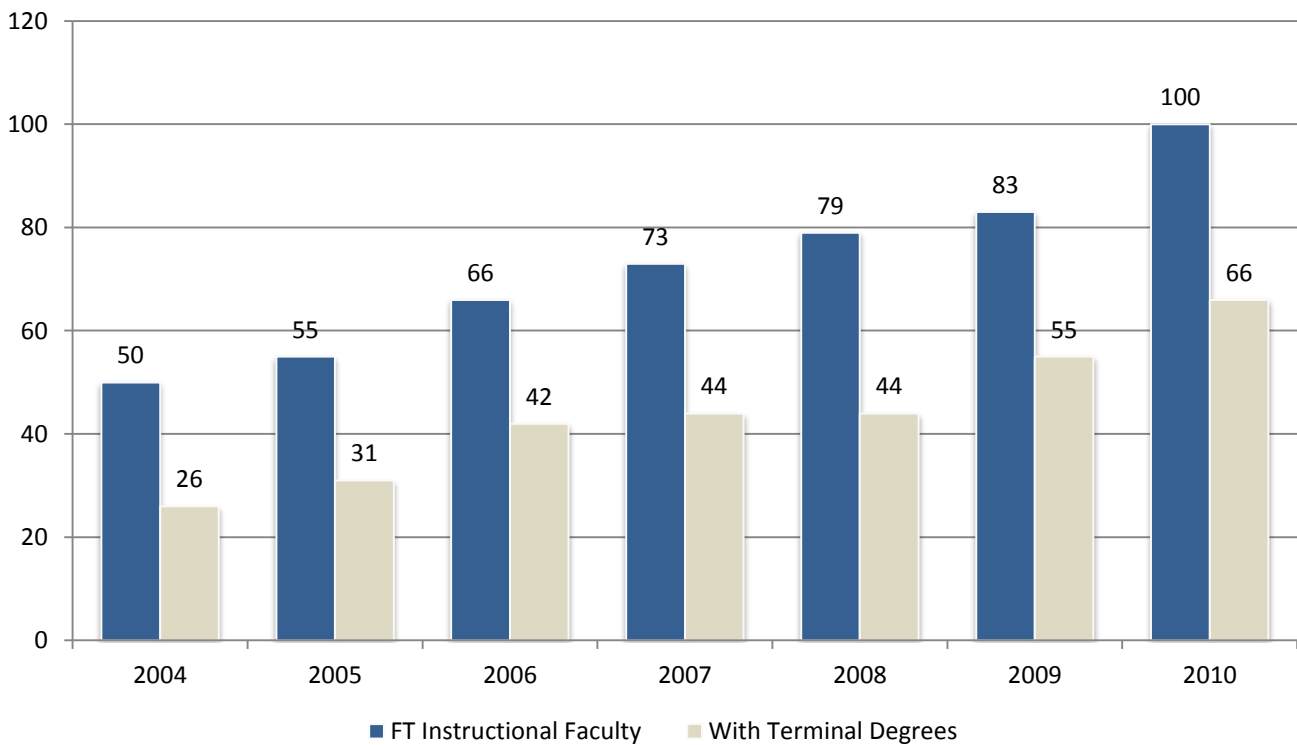
2001	2002	2003	2004	2005	2006	2007	2008	2009	2010
22.3:1	21.4:1	24.8:1	23.7:1	24.9:1	23.1:1	23.8:1	22.0:1	22.0:1	19.1:1

*Student FTE to Faculty FTE

Full-Time Instructional Faculty

Fall 2004-2010

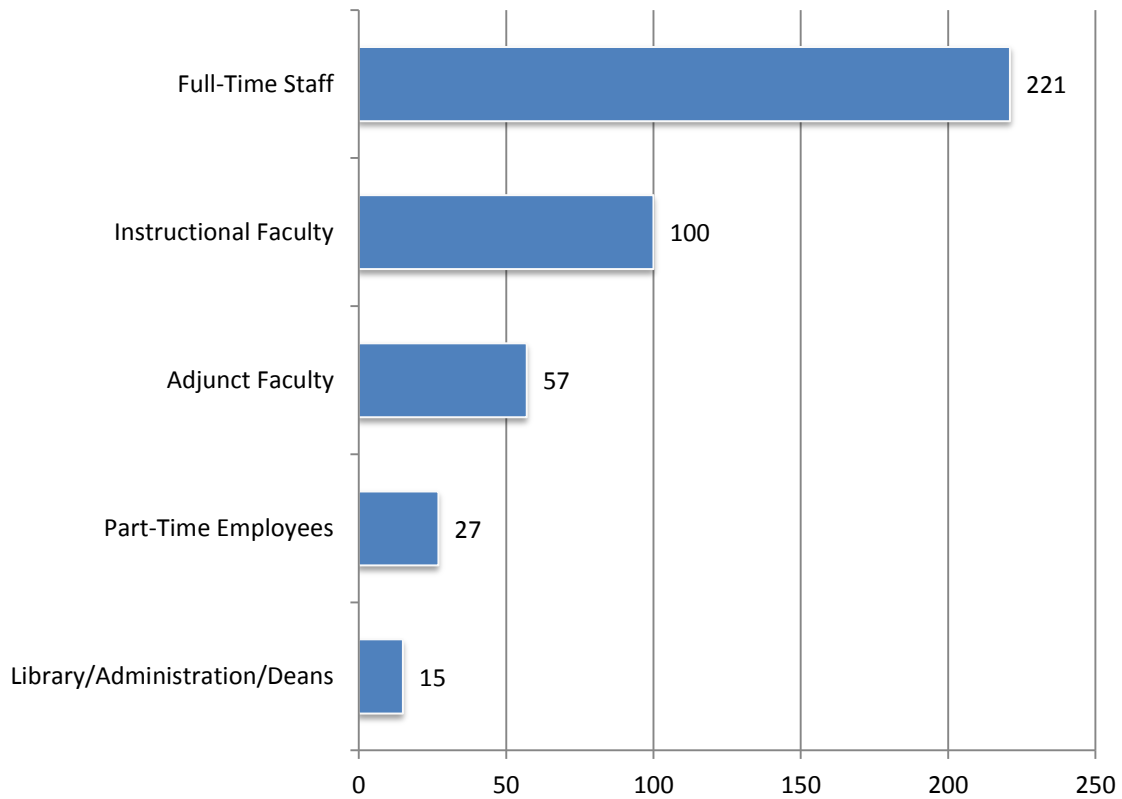
<i>Department/College</i>	<i>2004</i>	<i>2005</i>	<i>2006</i>	<i>2007</i>	<i>2008</i>	<i>2009</i>	<i>2010</i>
College of Arts & Sciences	30	32	41	44	44	43	50
Behavioral and Social Sciences	5	6	9	9	10	9	11
Communication	n/a	5	5	6	6	6	8
English and Foreign Languages	n/a	7	8	9	9	9	10
Language and Communication Arts	12	n/a	n/a	n/a	n/a	n/a	n/a
Music	7	7	10	10	10	9	10
Natural Sciences and Mathematics	6	7	9	10	9	10	11
College of Business and Legal Studies	6	8	10	11	12	18	21
Business Administration	n/a	n/a	n/a	n/a	n/a	13	15
Historical, Legal, and Leadership Studies	n/a	n/a	n/a	n/a	n/a	5	6
College of Christian Ministries and Religion	9	9	9	11	14	14	17
College of Education	5	6	6	7	9	8	12
Total Full-Time Instructional Faculty	50	55	66	73	79	83	100
Instructional Faculty with Terminal Degrees	26	31	42	44	44	55	66
Percentage	52.0%	56.4%	63.6%	60.3%	55.7%	66.3%	66.0%



Faculty/Staff/Administration

Fall 2010

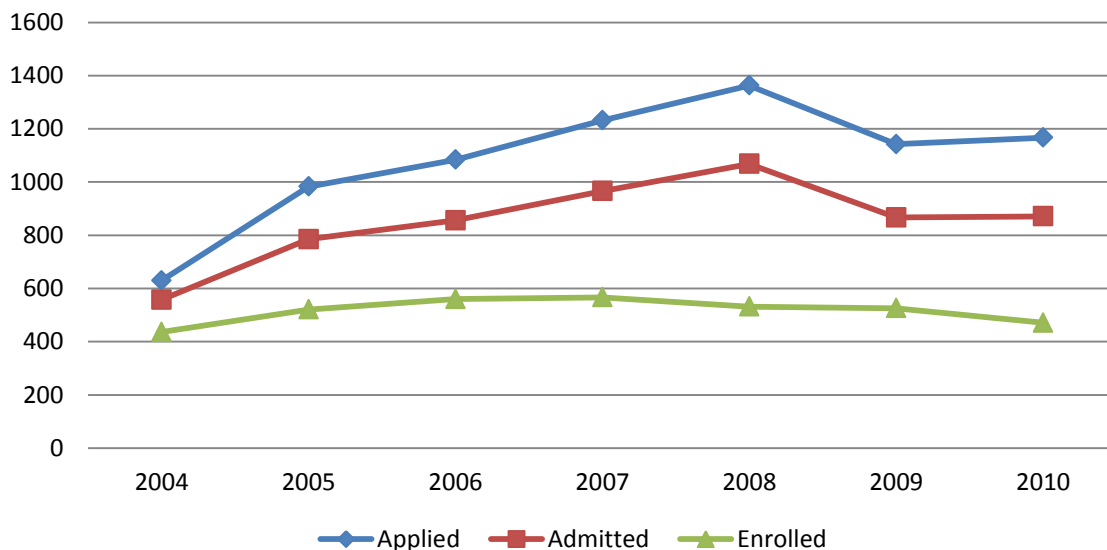
	<i>Total</i>
Instructional Faculty	100
Library/Administration/Deans	15
Full-Time Staff	221
<i>Secretarial/Clerical</i>	<i>64</i>
<i>Technical/Paraprofessional</i>	<i>5</i>
<i>Service/Maintenance</i>	<i>45</i>
<i>Skilled Craft</i>	<i>12</i>
<i>Professional Non-Faculty</i>	<i>69</i>
<i>Executive/Administrative/Managerial</i>	<i>26</i>
Full-Time Employees	336
Adjunct Faculty (Non-Staff)	57
Part-Time Employees (Non-Faculty)	27
Total Employees	420



Applications for Admission—Entering Freshman

Fall 2004 – Fall 2010

		<i>Applied</i>	<i>Admitted</i>	<i>%Admitted</i>	<i>Enrolled</i>	<i>% Admitted that Enrolled</i>
2004	Female	380	335	88%	257	77%
	Male	250	223	89%	179	80%
	Total	630	558	89%	436	78%
2005	Female	600	488	81%	321	66%
	Male	383	297	78%	200	67%
	Total	983	785	80%	521	66%
2006	Female	651	515	79%	321	62%
	Male	433	341	79%	239	70%
	Total	1,084	856	79%	560	65%
2007	Female	731	603	82%	333	55%
	Male	501	363	72%	234	64%
	Total	1,232	966	78%	567	59%
2008	Female	809	667	82%	325	47%
	Male	554	401	72%	207	51%
	Total	1,363	1068	78%	532	50%
2009	Female	685	528	77%	311	59%
	Male	457	339	74%	215	63%
	Total	1,142	867	76%	526	61%
2010	Female	690	532	77.1%	292	54.9%
	Male	477	339	71.1%	179	52.8%
	Total	1,167	871	74.6%	471	54.1%



SAT, ACT, and GPA—Entering Freshman

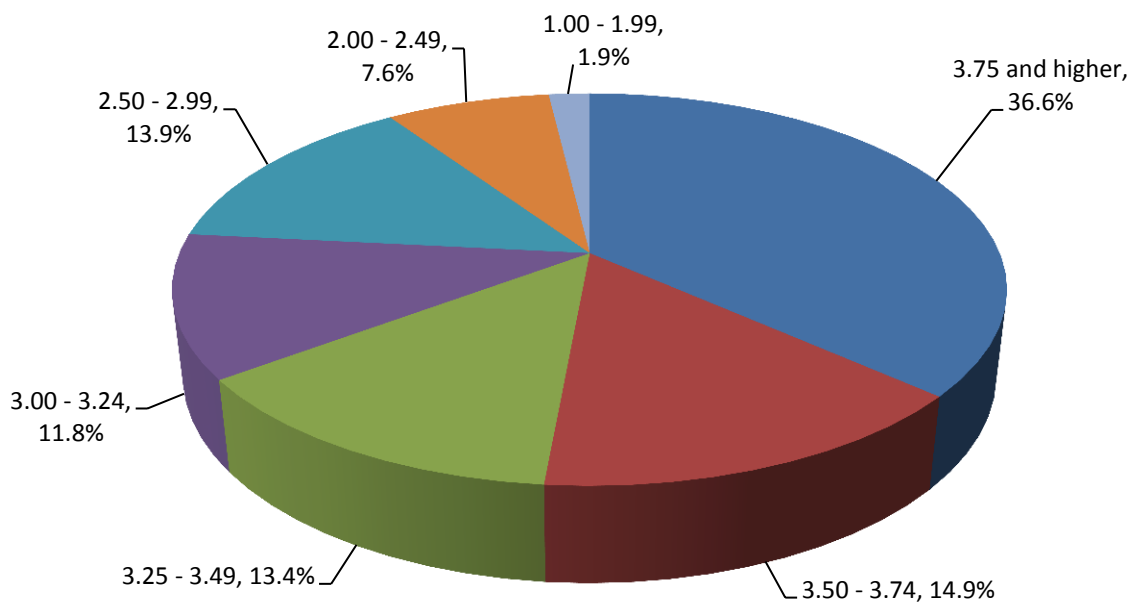
Fall 2010

	SAT Critical Reading	SAT Math	SAT Writing	ACT Composite	ACT Writing Composite
25 th Percentile	450	430	440	17.0	19.0
75 th Percentile	580	570	570	24.3	24.0
Average SAT Composite (Reading & Math Only)	1015/1600			<i>(N = 330)</i>	
Average SAT Composite (Reading/Math/Writing)	1505/2400			<i>(N = 330)</i>	
Average ACT Composite	21.1/30			<i>(N = 172)</i>	
Average ACT Writing Composite	21.6/30			<i>(N = 160)</i>	

GPA Scores

Percent who had GPA of 3.75 and higher	36.6%
Percent who had GPA between 3.50 and 3.74	14.9%
Percent who had GPA between 3.25 and 3.49	13.4%
Percent who had GPA between 3.00 and 3.24	11.8%
Percent who had GPA between 2.50 and 2.99	13.9%
Percent who had GPA between 2.00 and 2.49	7.6%
Percent who had GPA between 1.00 and 1.99	1.9%
Percent who had GPA below 1.00	0.0%

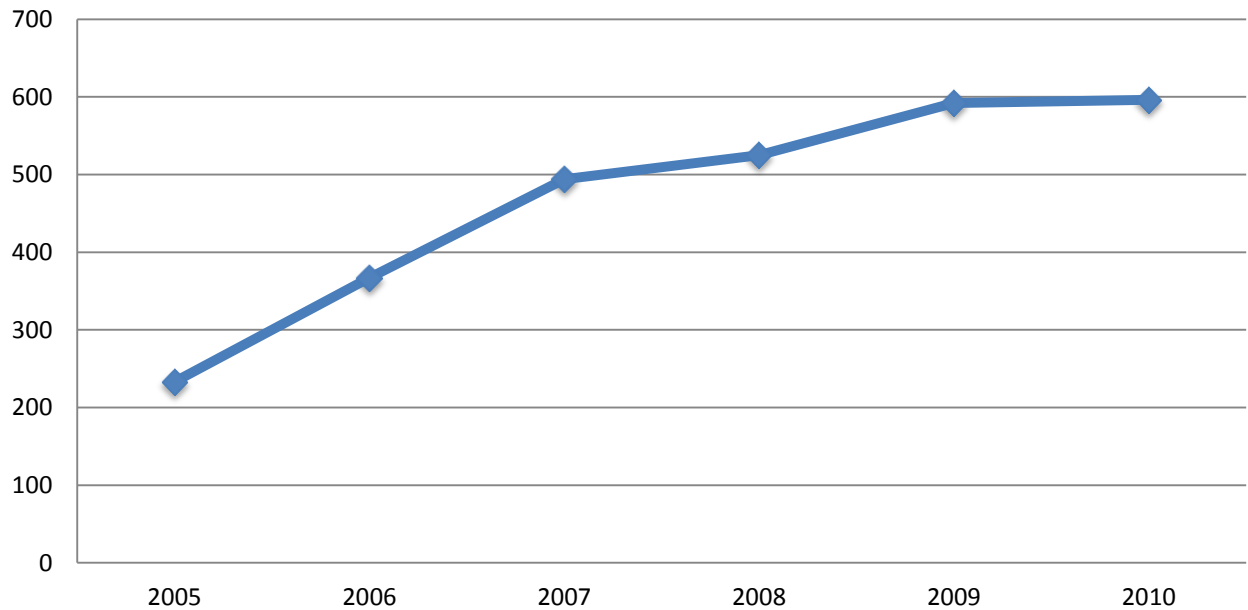
Average high school GPA score of entering Freshmen **3.46**
(N = 476)



Completions

2005 - 2010

	2005	2006	2007	2008	2009	2010
Female	128	208	265	303	330	361
Male	105	159	229	222	262	235
Total	233	367	494	525	592	596



*Degrees Conferred July 1st 2009 – June 30th, 2010

	<i>Bachelor's</i>	<i>Master's</i>	<i>All Degrees</i>
By Gender			
Female	301	59	361
Male	187	48	235
By Race/Ethnicity			
White, Non-Hispanic	342	83	426
Hispanic	51	8	59
Black, Non-Hispanic	32	7	39
Asian/Pacific Islander	1	1	2
American Indian/Alaskan Native	0	1	1
Nonresident Alien	3	1	4
Undesignated	59	6	65
Grand Total	488	107	596*

*One Associate of Arts degree was conferred.

Completions

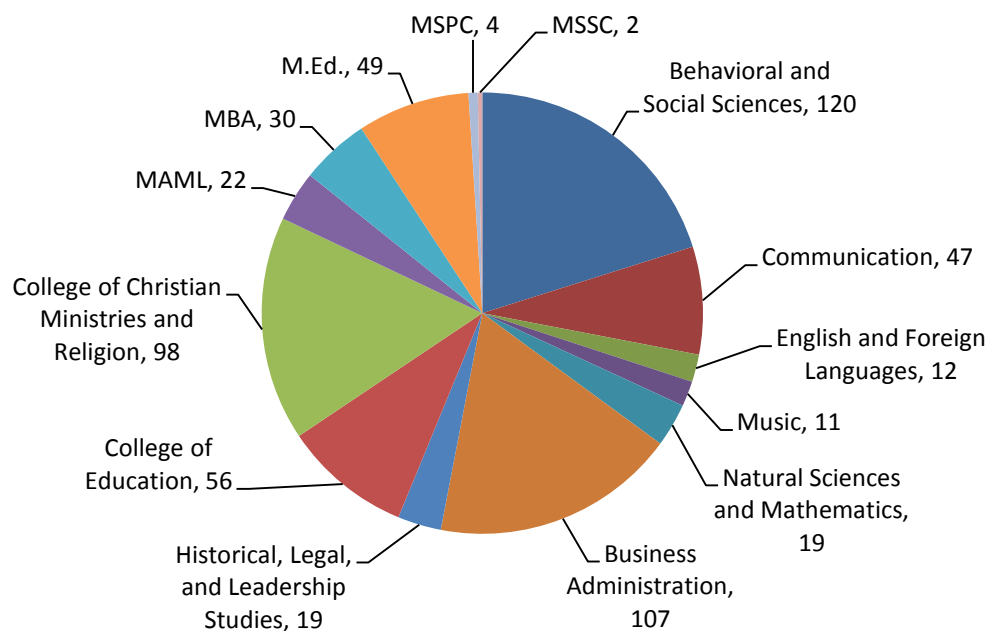
July 1, 2009 – June 30, 2010

Undergraduate Degrees Conferred by Disciplinary Areas

College of Arts & Sciences	209	35.1%
Behavioral and Social Sciences	120	20.1%
Communication	47	7.9%
English and Foreign Languages	12	2.0%
Music	11	1.9%
Natural Sciences and Mathematics	19	3.2%
College of Business and Legal Studies	126	21.1%
Business Administration	107	18.0%
Historical, Legal, & Leadership Studies	19	3.2%
College of Education	56	9.4%
College of Christian Ministries & Religion	98	16.4%
Total	489	82.1%

Graduate Degrees Conferred by Disciplinary Areas

M.A. Ministerial Leadership	22	3.7%
Master of Business Administration	30	5.0%
M.Ed. Elementary Education	17	2.9%
M.Ed. Educational Leadership	18	3.0%
M.Ed. Teaching and Learning	14	2.4%
M.S. Professional Counseling	4	0.7%
M.S. School Counseling	2	0.3%
Total	107	18.0%



Retention and Graduation Rates

2005 – 2010

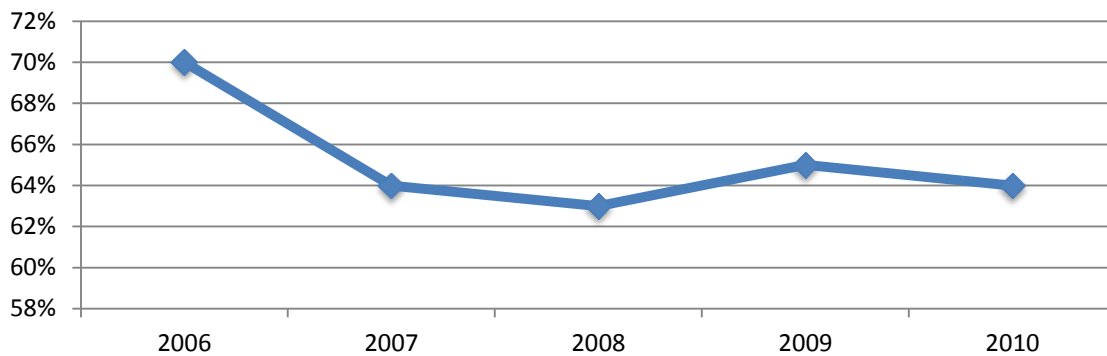
Retention Rates

Entering Freshman Cohort Year

2005
2006
2007
2008
2009

Percentage Returned Following Fall

70% 2006
64% 2007
63% 2008
65% 2009
64% 2010



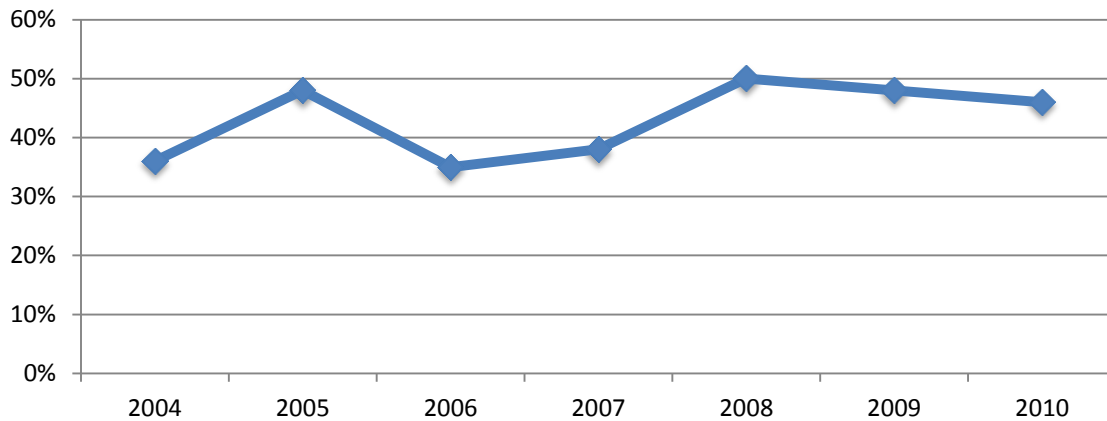
Graduation Rates

Entering Freshman Cohort Year

1998
1999
2000
2001
2002
2003
2004

Percentage Graduated Within Six Years

36% 2004
48% 2005
35% 2006
38% 2007
50% 2008
48% 2009
45% 2010

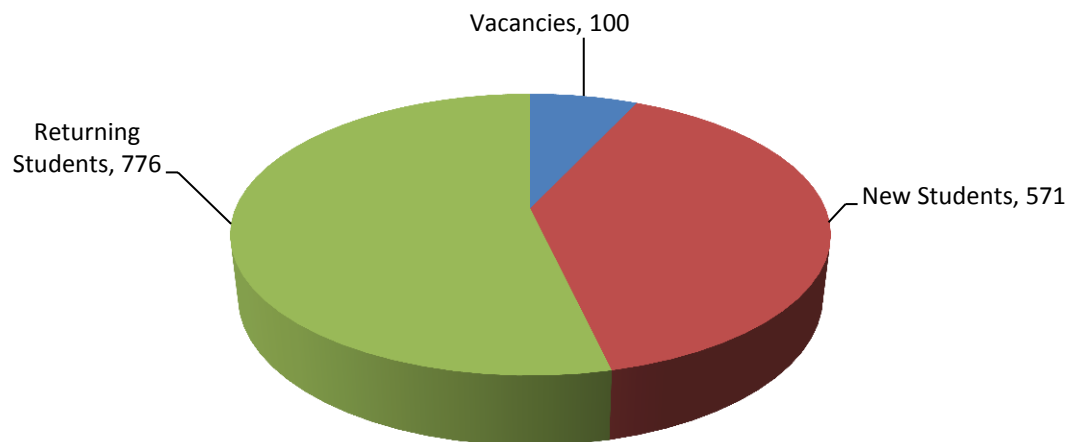


Residence Hall Housing

Fall 2010

<i>Residence Hall</i>	<i>Capacity</i>	<i>Returning Students</i>	<i>New Students</i>	<i>Total</i>	<i>Vacancies</i>
Bauer Hall	199	31	143	174	25
Destino Hall	256	198	43	241	15
Valencia	84	46	31	77	7
South Pointe	32	23	7	30	2
Men's Total	571	298	224	522	49
Bethany Hall	180	27	148	175	5
South Pointe	76	60	8	68	8
Valencia	24	13	10	23	1
Esperanza	260	160	85	245	15
Buttercup	80	70	2	72	8
Aventura Hall	256	148	94	242	14
Women's Total	876	478	347	825	51
Total	1447	776	571	1347	100

**Jerusalem students not reflected in these counts.*

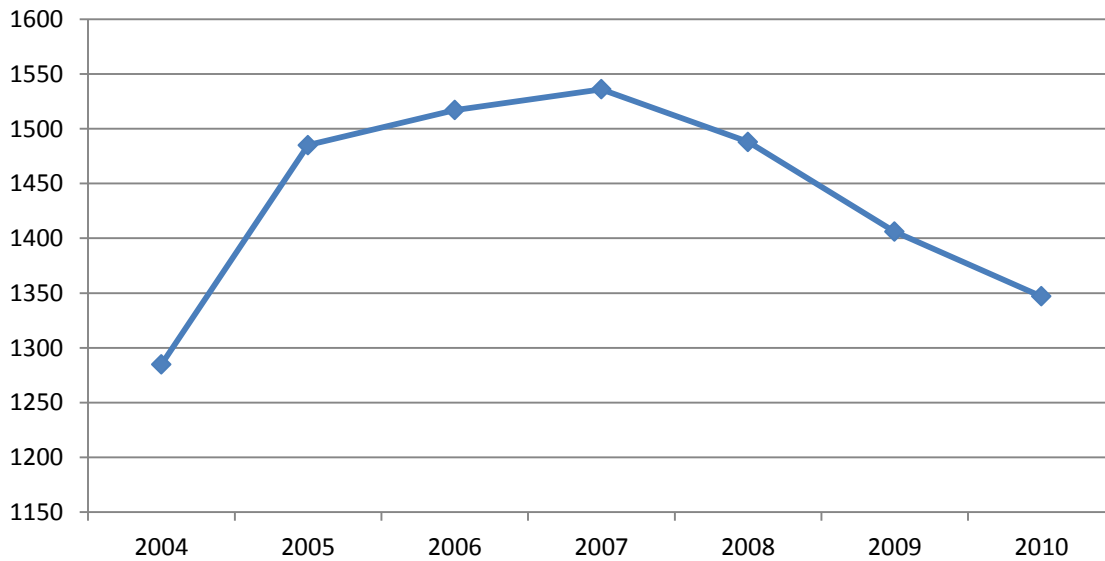


Housing Capacity

Fall 2004 – Fall 2010

<i>Year</i>	<i>Residents</i>	<i>Growth</i>	<i>Capacity</i>	<i>Capacity %</i>
2004	1,285	18.4%	1,290	99.6%
2005	1,485	15.6%	1,495	99.3%
2006	1,517	2.2%	1,517	100.0%
2007	1,536	1.3%	1,551	99.0%
2008	1,488	-3.1%	1,556	95.6%
2009	1,406	-5.5%	1,513	92.9%
2010	1,347	-4.2%	1,447	93.1%

Residents



Library Resources

Fall 2010

Library Holdings

Books	81,613
Periodical titles	861
Compact discs	3,205
Videos	4,149

Online Resources

Full-text books	32,508
Full-text periodicals	36,000
Online databases	42
Checkouts last year	44,544

Computer Resources

Total number of computers available to all students 145

Notes



Southeastern University

*Office of Institutional Research & Retention
1000 Longfellow Blvd. Lakeland, FL 33801
Phone: 863.667.5933 Fax: 863.667.5200*