

SOUTHEASTERN UNIVERSITY



2015-2016 **SEU Fact Book**



Transforming minds. Engaging culture.

SOUTHEASTERN UNIVERSITY

Office of Institutional Effectiveness

Dr. Andrew H. Permenter

Vice President, Institutional Research
& Extended Education
ahpermenter@seu.edu

Mr. Cody J. Lloyd

Executive Director,
Information Management
cjlloyd@seu.edu

Mr. Keith A. Kelso

Assistant Director,
Research & Reporting
kkelso@seu.edu

Published in November 2015

© 2015 Southeastern University
1000 Longfellow Blvd.
Lakeland, Florida 33801

Table of Contents

Board of Trustees.....	2	Full-Time Equivalency Enrollment	
Mission & Vision.....	4	2006-2015	50
Strategic Plan.....	5	Enrollment by Gender, 2006-2015...52	
History of Southeastern	6	Enrollment by Race & Ethnicity,	
Points of Excellence	8	2009-2015	54
Alumni Relations.....	9	Enrollment by State or U.S. Territory .	56
Accreditation.....	12	International Enrollment.....	58
Institutional Memberships	13	Enrollment by Denomination	60
Organizational Charts.....	14	Enrollment by AG District.....	62
Athletics.....	22	Faculty Division & Rank.....	64
Clubs & Organizations.....	24	Instructional Faculty, 2011-2015.....	66
Library & Computer Resources	25	Instructional Faculty Demographics .	68
Missions.....	26	Faculty & Staff.....	70
Tuition & Fees.....	28	Applications for	
Tuition, Room & Board Comparison .	32	Freshman Admission.....	72
Financial Aid - Entering Freshmen..	34	SAT, ACT & GPA for	
Academic Programs	36	Entering Freshmen	74
Honors Program	40	Completions.....	76
Enrollment Summary	42	Retention Rates	80
Enrollment by Major	44	Graduation Rates	81
Total Enrollment, 2006-2015	48	On-Campus Enrollment	82
		Housing Capacity.....	83



Board of Trustees

Rev. Terry Raburn | Chairman

Rev. M. Wayne Blackburn | Vice Chairman

Rev. John Jordan | Secretary

Dr. Kent Ingle | University President

Rev. Tommy Barnett | University Chancellor

Rev. Abner Adorno

Rev. Roger Archer

Rev. Terry Bailey

Rev. Mark Batterson

Mrs. Jennifer Closshey

Rev. Richard Collins

Rev. David W. Dillon

Rev. David Docusen

Rev. Kenneth Draughon

Rev. Edward Hawkins

Rev. Mark Jakelsky

Rev. Steve Mason

Rev. Tommy Moore

Mr. Bill Mutz

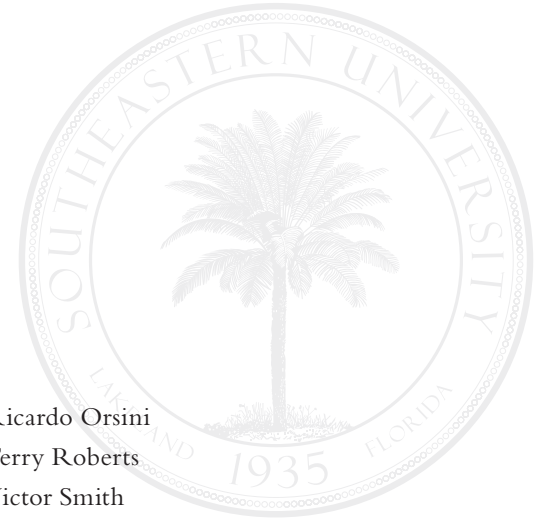
Rev. Ricardo Orsini

Rev. Terry Roberts

Rev. Victor Smith

Rev. Rich Wilkerson Sr.

Rev. Doug Witherup





Mission Statement

Equipping students to discover and develop their divine design to serve Christ and the world through Spirit-empowered life, learning and leadership.

Vision Statement

Southeastern University is anchored by Spirit-empowered education in a Christ-centered, student-focused learning community. Southeastern's global impact is marked by a deep commitment to transforming minds and engaging culture through the integration of faith, learning and service. Each student's divine design is nurtured and unleashed through the investment of faculty and staff, relationships within the community, the rigor of scholarship, diverse learning experiences and the discipline of spiritual formation, which propels students into a lifetime of serving the world in the Spirit of Christ.





Strategic Plan

Our Core Values

1. A university absolutely committed to Christ-like formation
2. A university of educational breadth and depth
3. A university of faculty distinction
4. A university that thinks globally
5. A university committed to serving human needs in our community and in communities around the world
6. A university characterized as a community of grace
7. A university that is student-focused at all times

Our Five-Year Plan

To create a university of curricular and co-curricular excellence with a faculty of distinction, diverse student population, strong financial base and culture of high performance and quality

Source: Southeastern University 2012–2017 Strategic Plan



History of Southeastern University

Southeastern University was founded in 1935 by Alabama District Superintendent J.C. Thames and other Southeastern District leaders. Originally named the Alabama Shield of Faith Institute, it was renamed the South-Eastern Bible Institute (SEBI) in 1936. Guy Shields was the first president.

Originally located in a former high school building in New Brockton, Alabama, the school opened its doors to students on November 4, 1935, under the direction of four faculty members. Two years later, on May 22, 1937, the first graduation exercises were held. Seventeen students received diplomas for the two-year academic program.

SEBI continued classes in New Brockton until 1940 when a decision was made to consolidate the school with Beulah Heights Bible Institute in Atlanta, Georgia. The school was known from 1940 to 1942 as the Beulah Heights-South-Eastern Bible Institute. In the fall of 1942, Rev. Ralph Byrd allowed the school to relocate to his congregation at 301-7 Capital Ave., SW in Atlanta, where it then was once again named the South-Eastern Bible Institute.

In 1946, the board of directors voted to secure a permanent location for the full development of the school. A new campus location was purchased later that year in Lakeland, Florida. The Atlanta campus was sold, and development of the new site was begun. From 1946 to 1952, SEBI was located at the Lodwick School of Aeronautics in Lakeland. In 1952, the school moved to its present location at Longfellow Blvd.



Student body growth continued at the new central Florida campus along with the academic programs. SEBI became South-Eastern Bible College in 1956 when four-year Bachelor of Arts degree programs were begun. After adding education degrees, the college's board of directors changed the school name to Southeastern College of the Assemblies of God in 1977.

In 1986, Southeastern was granted regional accreditation by the Southern Association of Colleges and Schools Commission on Colleges. This accreditation was reaffirmed in 1991, 2001 and 2011.

In 2005, Southeastern College officially became Southeastern University, began offering its first master's degree programs and formed the Colleges of Arts & Sciences, Business, Christian Ministries & Religion and Education. Since then, the university has also formed the Colleges of Behavioral & Social Sciences and Natural & Health Sciences and, in 2014, began its first doctoral program, the EdD.

What began in 1935 as a Bible-training school is now the largest Assemblies of God educational institution in America, producing future Christian leaders in the fields of church ministries, education, medicine, law, business, communication, psychology, social work, literature and music.



Points of Excellence

Campus Growth

The new College of Natural & Health Sciences building was completed in the summer of 2015. The building features cutting-edge science laboratories, a clinic space for medical training, and Suzie, the skeleton of a juvenile mastodon, on display in the lobby.

The new Choral Rehearsal Hall was also completed this year, providing a unique new practice space for Southeastern's music program.

Summer of 2015 also saw the demolition of Spence Hall, Lindsey Science Center, and the Music Hall, all to make way for the new five-story Live/Learn Center. The new complex will include dorm rooms, offices, classrooms, music practice space, and three new restaurants. It is scheduled to be completed by Fall 2016.

Enrollment Growth

Southeastern continued to grow this year and was again recognized by the Chronicle of Higher Education as one of the nation's fastest-growing private, baccalaureate institutions. In just the last four years, enrollment has increased by 78%.

New Programs

The new academic year saw the launch of a number of new academic programs, including a bachelor's degree in Kinesiology, a new online Bachelor of Business Administration, a MEd in Exceptional Student Education and Educational Therapy, and a new Master of Divinity program.

Alumni Relations

A few highlights from alumni this past year:

Caleb Kinchlow ('08) won his second Emmy Award for “Best News and Technology Series.” This was an original program that he produced and hosted for CBN News. Caleb won his first Emmy as a host for NASA.

Ida Abraham ('07) graduated from Southeastern and then went on to complete her doctoral degree in chiropractic and purchased an established chiropractic clinic in Lakeland, Florida.

Angel Gonzalez ('08) was promoted to community president of the Marion/Putnam market for CenterState Bank.

Joseph Gordon ('93) won the 2015 Young Influence Award from the Assemblies of God. This award was presented during the 2015 General Council.

Two issues of the Southeastern alumni magazine were produced in the winter and summer months. These issues highlighted alumni such as Bryan Duncan ('71), Jordan ('09) and Elizabeth ('10) Shea, Jay Mooney ('88) and Bill Hancock ('87), Tez Brooks ('86), Megan Vino ('09), Esterline Vilot-Elanus ('14) and many others.

Launch of the new Alumni Affinity Program, **SEU O2**

Of the 303 members who have joined the O2 program since its inception:



Alumni Relations *(continued)*

Graduates to Date by College

Arts & Media	1,083
Behavioral & Social Sciences	1,603
Business & Legal Studies	1,467
Christian Ministries & Religion	4,672
Education	3,395
Natural & Health Sciences	187
Total Graduates	12,407



SOUTHEASTERN UNIVERSITY

Alumni Association





Accreditation

Southeastern University is accredited by the **Southern Association of Colleges and Schools Commission on Colleges** to award associate, baccalaureate, masters, and doctorate degrees. Contact the Commission on Colleges at 1866 Southern Lane, Decatur, GA 30033-4097 or call 404-679-4500 for questions about the accreditation of Southeastern University.

Other discipline-specific accreditations and licensures:

- Council on Social Work Education (CSWE)
- International Assembly for Collegiate Business Education (IACBE)
- Florida Department of Education (FLDOE) – *Southeastern University is approved to grant degrees that meet certification requirements for a Florida teaching credential.*
- Commission on Collegiate Nursing Education (CCNE) – *Initial accreditation process complete; awaiting final disposition*



Institutional Memberships

American Association of Collegiate Registrars and Admissions Officers (AACRAO)

American Society of Composers, Authors and Publishers (ASCAP)

Association to Advance Collegiate Schools of Business (AACSB International)

The Alliance for Assemblies of God Higher Education (The Alliance)

Southern Association of College and Schools Commission on Colleges (SACSCOC)

Florida Association of Colleges for Teacher Education (FACTE)

National Association of Independent Colleges and Universities (NAICU)

Association of American Colleges and Universities (AAC&U)

Association of Christian Schools International (ACSI)

Association of Departments of English

Association for General and Liberal Studies (AGLS)

Association of Institutional Research (AIR)

Broadcast Music Inc. (BMI)

Council for Christian Colleges and Universities (CCCU)

Council of Colleges of Arts and Sciences (CCAS)

Council of Independent Colleges (CIC)

Council on Higher Education Accreditation (CHEA)

Florida Association for Institutional Research (FAIR)

Florida Association of Colleges for Teacher Education (FACTE)

Florida League of Christian Schools (FLOCS)

Independent Colleges and Universities of Florida (ICUF)

National Association of Intercollegiate Athletes (NAIA)

National Christian College Athletic Association (NCCAA)

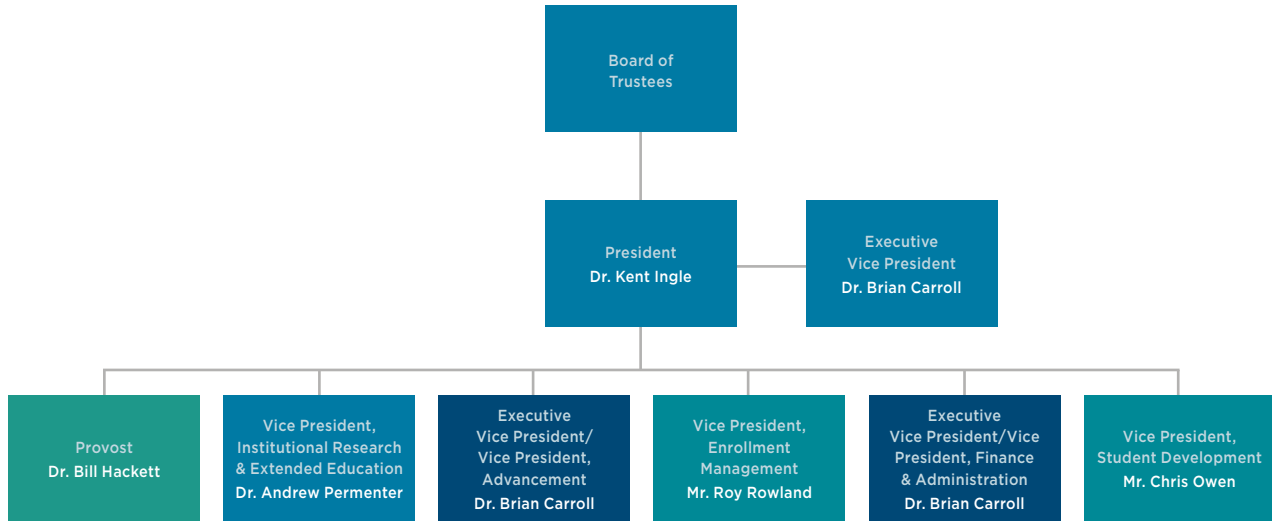
National Collegiate Honors Council (NCHC)

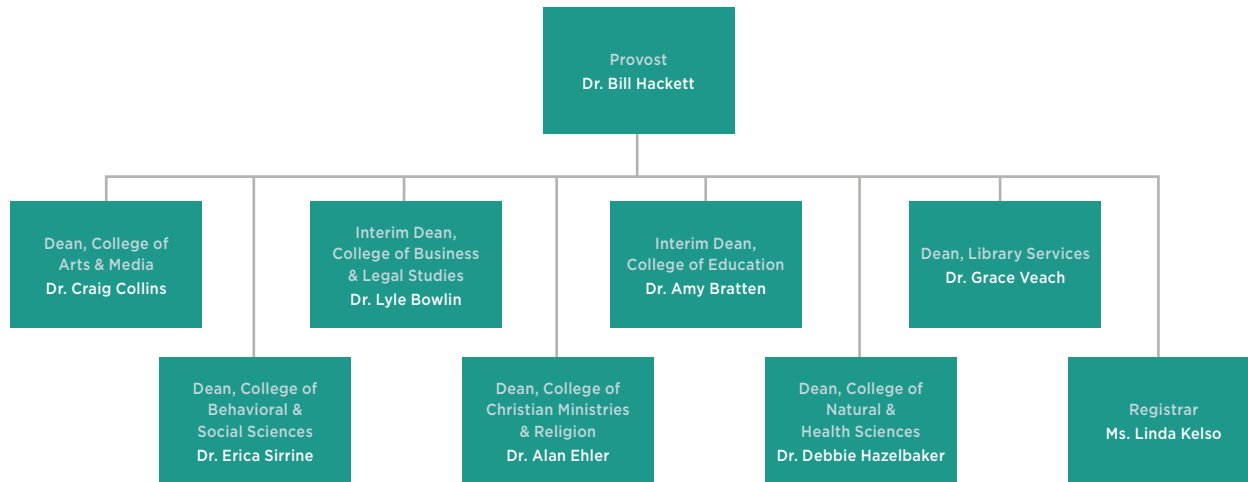
Polk Arts Alliance

Southern Association for Institutional Research (SAIR)

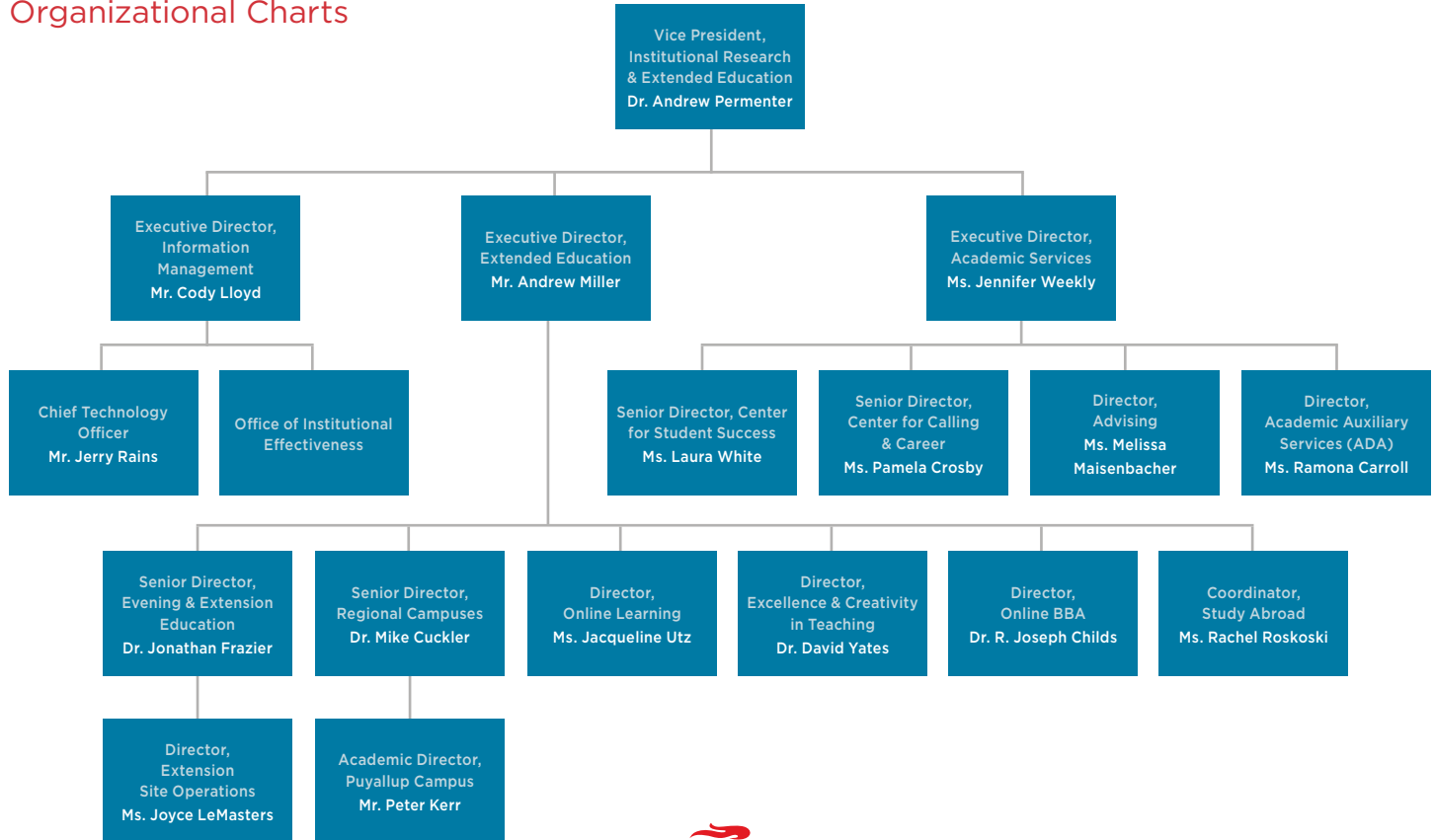


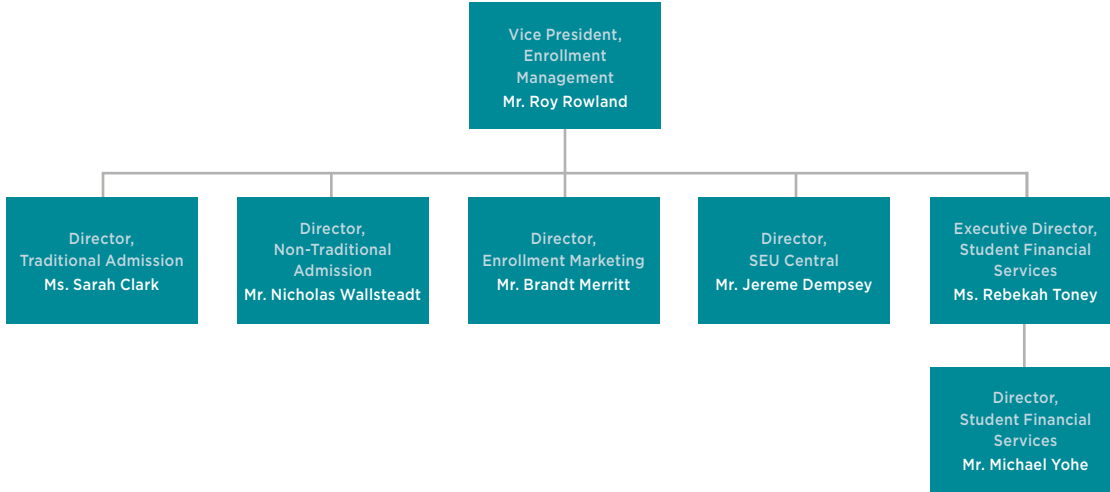
Organizational Charts



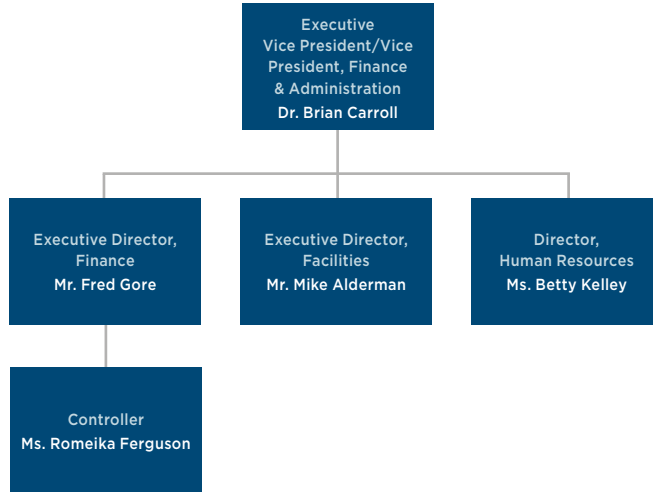


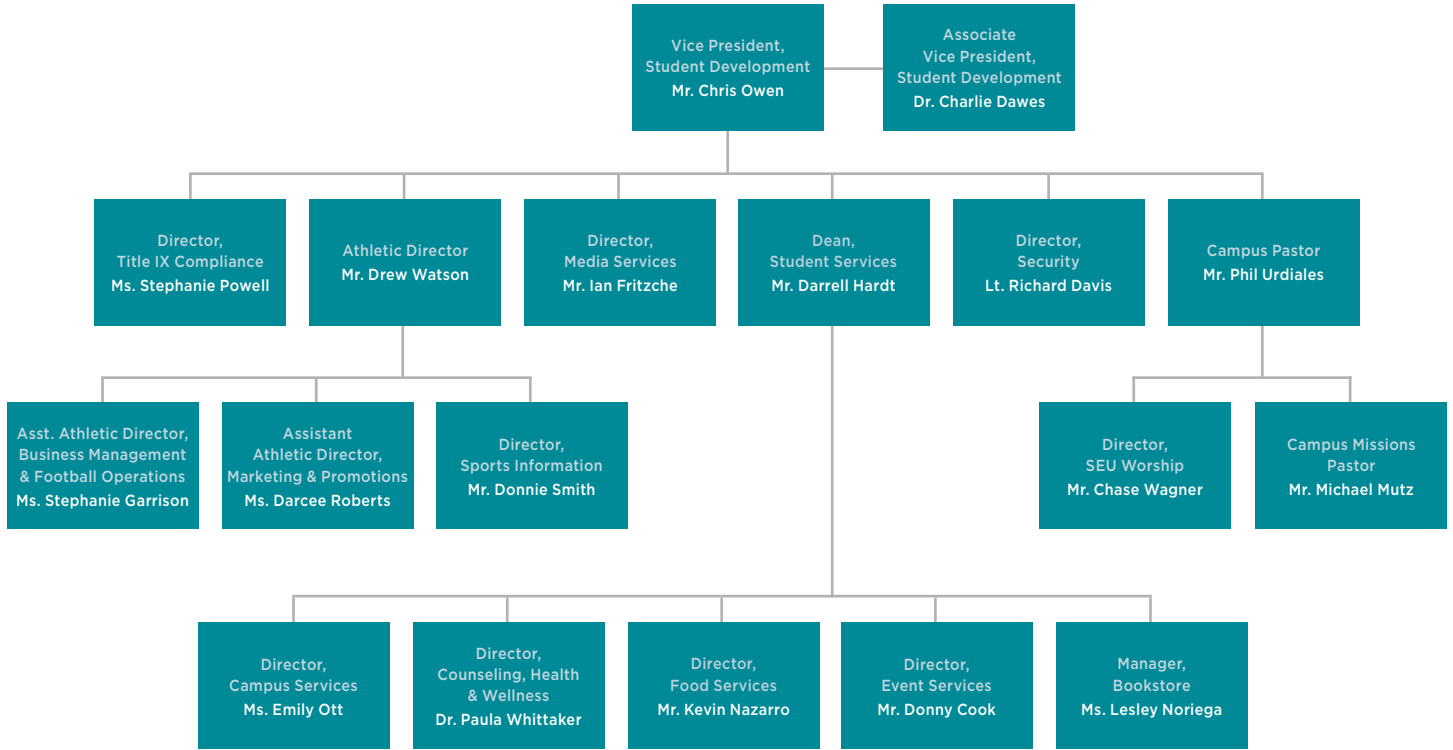
Organizational Charts



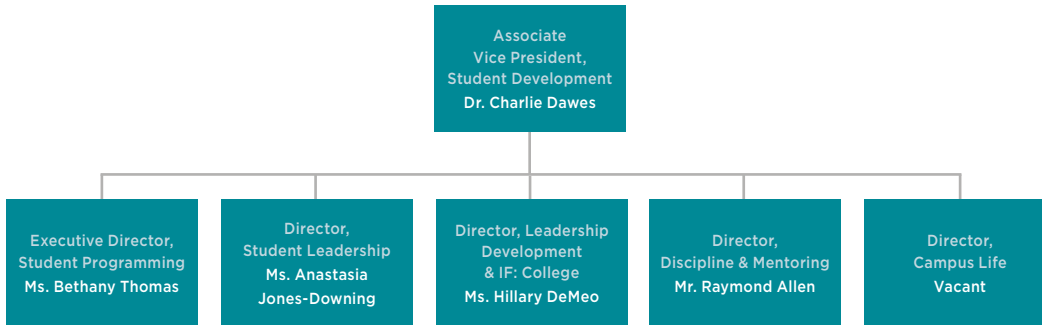


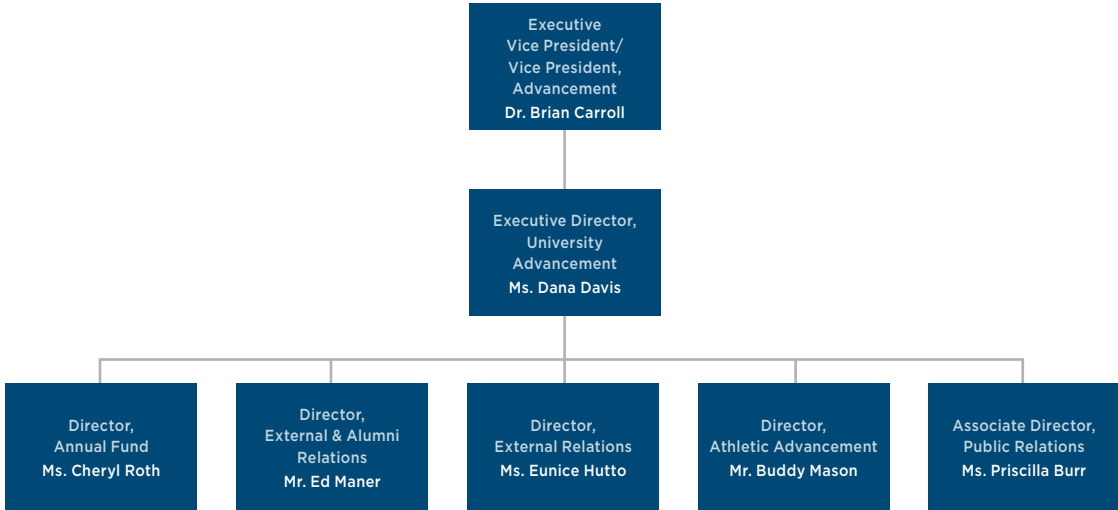
Organizational Charts





Organizational Charts





Athletics

Southeastern University is a member of the National Association of Intercollegiate Athletics (NAIA) and competes in The Sun Conference.

Varsity Sports

Men's Programs

Baseball
Basketball
Cross country
Football
Golf
Soccer
Tennis
Wrestling

Women's Programs

Basketball
Cross country
Golf
Soccer
Softball
Tennis
Volleyball

Intramural Sports

Basketball
Flag football
Indoor soccer
Powder puff football
Sand volleyball
Soccer
Softball
Ultimate frisbee





Athletic News

The Southeastern University athletic programs had a banner year, with all programs posting a winning record and three programs advancing to the NAIA national championship.

Baseball made its second consecutive national tournament appearance, finishing the year 38–21, losing to Rio Grande and Bryan in the opening round held in Daytona Beach.

Women's basketball earned a bid to the national tournament in Sioux City, Iowa, losing to second-seeded Tennessee Wesleyan 62–45 in the 32nd round.

Softball became the first SEU athletic program to win a regular season Sun Conference championship and earned an at-large bid to the national tournament, winning its first game against Marian University.

A total of eight programs saw time ranked or received votes in the NAIA National Top 25 polls. Individually, Fire athletes earned Sun Conference Player of the Week honors 38 times and had 22 First Team All-Sun Conference recipients and eight NAIA All-Americans.

For more information on Southeastern University athletics, please visit SEUfire.com.





Clubs & Organizations

The Anointed Generation
Gospel Ministry
Christians for Biblical Equality
Christians United for Israel
Circle K International
Creo Music Club
The Factory
Fellowship of Christian Athletes
Florida Nursing Student Association
Gamer's Guild

Ghostlight Theater
Global Evangelism Outreach
Project (GEO Project)
Humans vs. Zombies
International Love
Kappa Delta Pi
Kappa Mu Epsilon
Love Yourself Foundation
Pre-Health Service
Organization (PHSO)

SEU Automotive Enthusiasts
Soul Food
Speak That
Student Christian Medical and
Dental Association (SCMDA)
Students Working Against
Tobacco (SWAT)
Team Rocket Moped Club
Timothy Project



Library & Computer Resources

Library Holdings

Books (Print)	81,194
Videos (DVD)	6,020
CDs	9,670
E-books	169,763
Online Videos	19,658
Online Recordings	58,368
Other	43,770
Total	388,443

Computers

Total number of computers available to all students	156
---	-----



Missions

During the 2014–2015 academic year, Destinations, Southeastern’s missions department, sent out 453 students on 51 trips all over the world. Covering six continents, students visited the following locations:

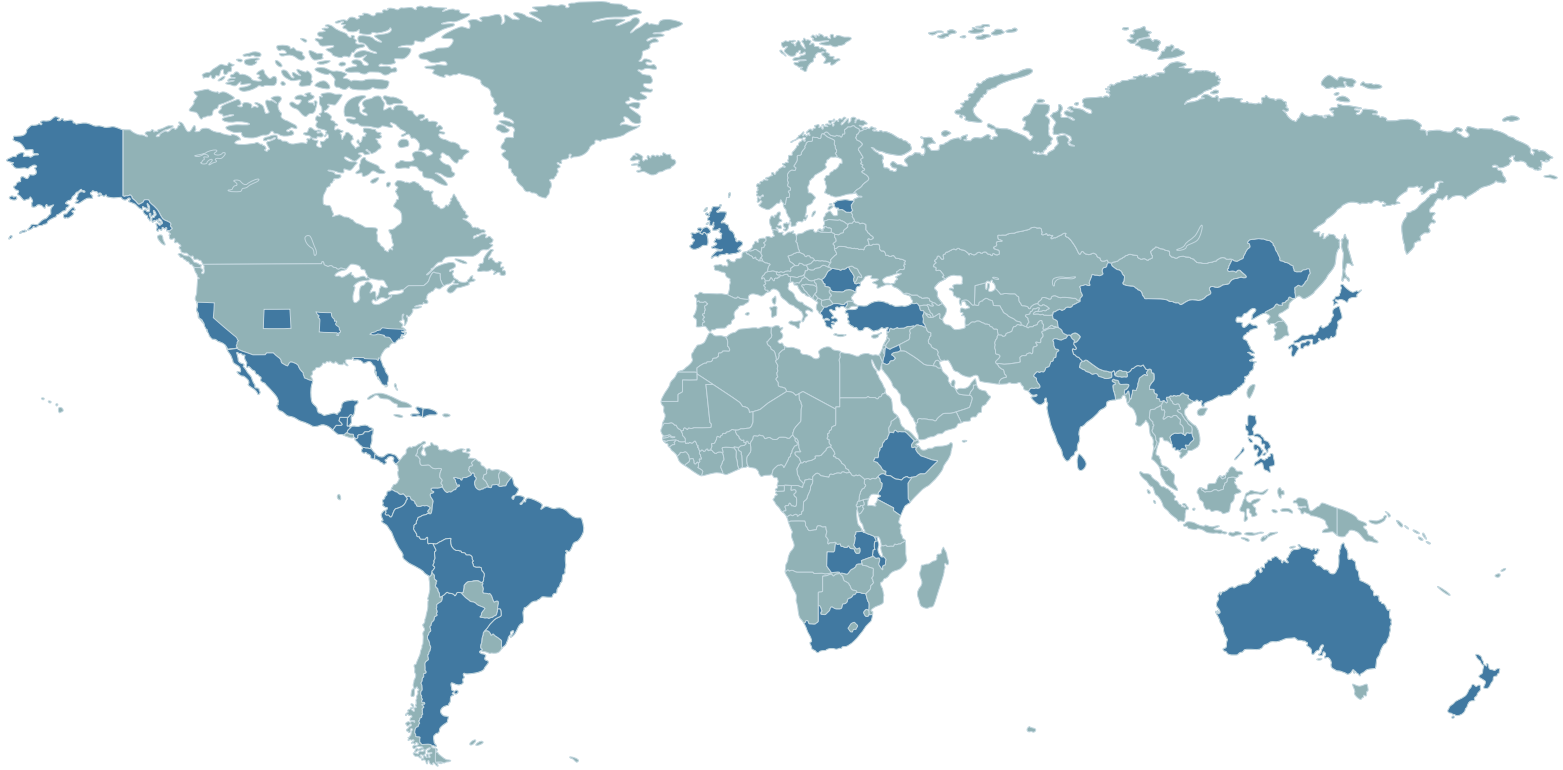
United States

Alaska
California
Colorado
Florida
Missouri
North Carolina

International

Australia
Argentina
Belize
Bolivia
Brazil
Cambodia
China
Costa Rica
Dominican Republic
Ecuador
Estonia
Ethiopia
Greece
Guatemala
Haiti
Honduras
India
Ireland
Japan
Jordan
Kenya
Malawi
Mexico
New Zealand
Nicaragua
Panama
Peru
Philippines
Romania
South Africa
Sri Lanka
Turkey
United Kingdom
Zambia





Undergraduate Tuition & Fees for 2015-2016

Tuition	Semester	Year
12-17 Credit Hours	\$10,920	\$21,840
Hourly Tuition (under 12 or over 17 credit hours)	\$910	\$910
General Student Fee	\$500	\$1,000
Total for Off-Campus	\$11,420	\$22,840

Residence Halls

Traditional Student Housing	\$2,376	\$4,752
Traditional Student Housing but with a Private Room	\$2,776	\$5,552
Other Housing	\$2,530	\$5,060
Other Housing	\$2,668	\$5,336
Other Housing	\$2,945	\$5,890



Meal Plans	Semester	Year
Carte Blanche Meal Plan	\$2,253	\$4,506
21-Meals-per-Week Plan	\$2,198	\$4,396
14-Meals-per-Week Plan	\$2,131	\$4,262
10-Meals-per-Week Plan	\$2,099	\$4,198
Commuter Meal Plans:		
25-Meals-per-Semester Plan	\$420	\$840
15-Meals-per-Semester Plan	\$231	\$462
10-Meals-per-Semester Plan	\$162	\$324
Room and Meal Plan*	\$4,574	\$9,148
Total for On-Campus*	\$15,994	\$31,988

**Based on 12-17 credit hours; traditional student housing; and 21-meal plan*

Other Estimated Expenses

Books and Supplies	\$1,600
Miscellaneous (transportation, laundry, entertainment, etc.)	\$2,400



Graduate Tuition & Fees for 2015-2016

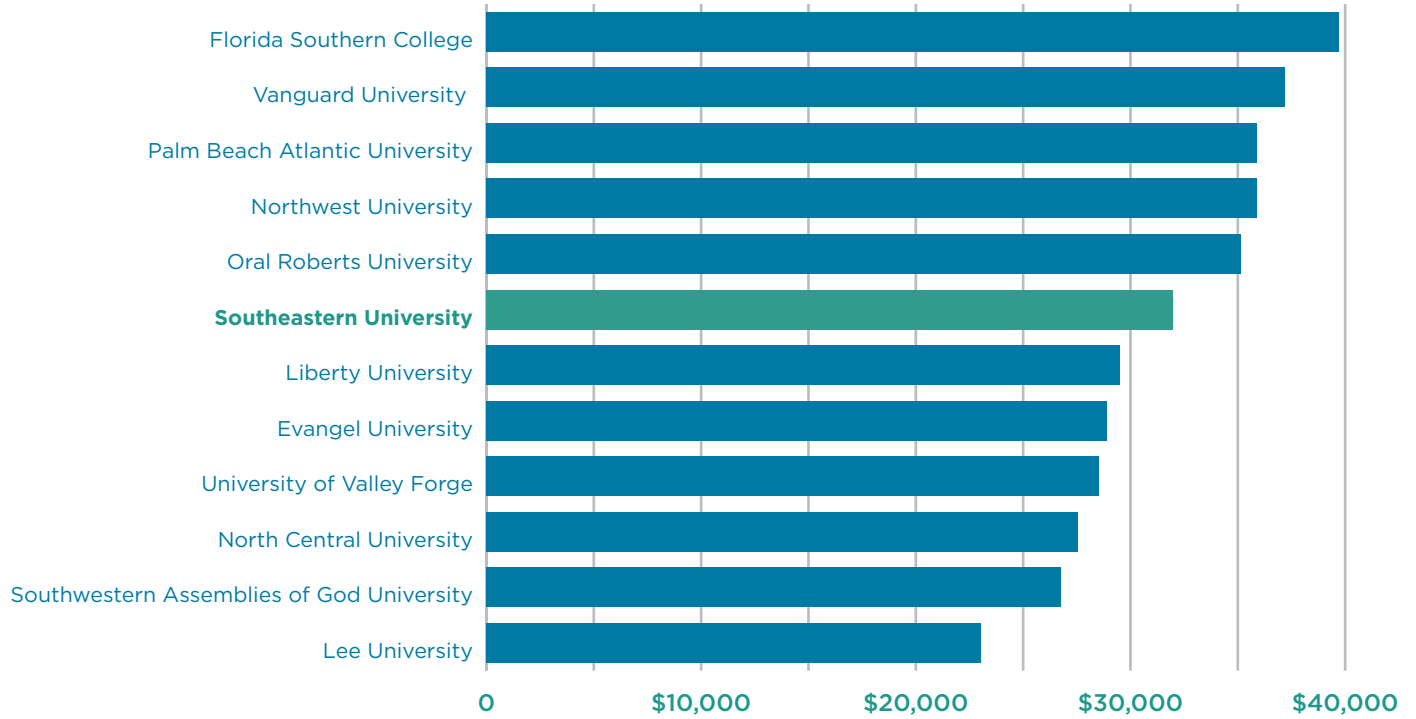
Program	Tuition/Hr	Credit Hours	Total Tuition
EdD	\$500	66	\$33,000
MA in Ministerial Leadership	\$495	36	\$17,820
MA in Ministerial Leadership - Executive Track	\$530	36	\$19,080
MA in Human Services	\$495	36	\$17,820
MA in Theological Studies	\$495	36	\$17,820
Master of Business Administration (MBA)	\$525	36	\$18,900
Accelerated MBA	N/A	36	\$25,900
Master of Divinity (MDiv)	\$495	72	\$35,640
MEd in Elementary Education	\$375	33	\$12,375
MEd - All Other Programs	\$375	36	\$13,500
MS in Professional Counseling	\$525	60	\$31,500
MS in School Counseling	\$525	60	\$31,500
MS in Marriage & Family Therapy	\$525	60	\$31,500
Annual General Student Services Fee	\$300		



Tuition, Room & Board Comparison for 2015-2016

School	Assemblies of God	Annual Cost
Florida Southern College		\$39,712
Vanguard University	(AG)	\$37,200
Palm Beach Atlantic University		\$35,880
Northwest University	(AG)	\$35,876
Oral Roberts University		\$35,140
Southeastern University	(AG)	\$31,998
Liberty University		\$29,500
Evangel University	(AG)	\$28,898
University of Valley Forge	(AG)	\$28,510
North Central University	(AG)	\$27,550
Southwestern Assemblies of God University	(AG)	\$26,757
Lee University		\$23,040



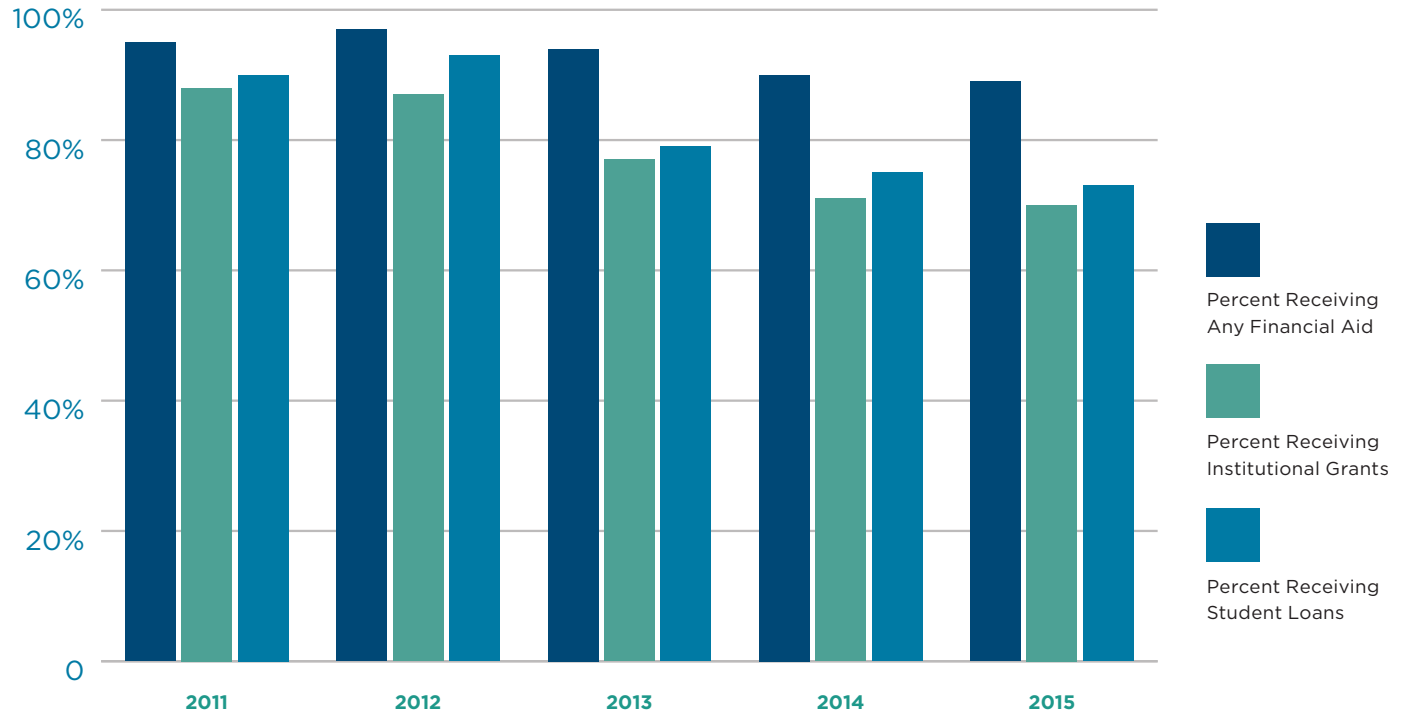


Financial Aid for Entering Freshmen

	2011	2012	2013	2014	2015
Percent Receiving Any Financial Aid	95%	97%	94%	90%	89%
Percent Receiving Federal Grants	50%	48%	48%	47%	48%
Average Amount of Federal Grants	\$4,717	\$4,640	\$4,608	\$4,796	\$4,707
Percent Receiving State/Local Grants	58%	56%	56%	57%	56%
Average Amount of State/Local Grants	\$3,244	\$3,253	\$3,233	\$3,349	\$3,302
Percent Receiving Institutional Grants	88%	87%	77%	71%	70%
Average Amount of Institutional Grants	\$6,423	\$8,036	\$9,285	\$9,709	\$9,944
Percent Receiving Student Loans	90%	93%	79%	75%	73%
Average Amount of Student Loans	\$16,207	\$15,801	\$13,384	\$13,364	\$13,116



Percent of Entering Freshmen Receiving Aid



Academic Programs

College of Arts & Media

Undergraduate:

TR EV OL EXT

General Education Studies

Associate of Arts



Department of Communication

BA, BS Broadcasting



BA, BS Communication



BA, BS Digital Journalism



BA, BS Film Production



BA, BS Graphic Design



BA, BS Public Relations



BA, BS Media Ministry



Department of English & Foreign Languages

BA English



BA English & Intercultural Studies



Department of Music

BS Church Music



BA Music



BS Music Business



BS Music Education



BM Music Performance



College of Behavioral & Social Sciences

Undergraduate:

TR EV OL EXT

BS Human Services



BS Psychology



BS Social Work



Graduate:

MA Human Services



MS Marriage & Family Therapy



MS Professional Counseling



MS School Counseling



College of Business & Legal Studies

Department of Business Administration

<i>Undergraduate:</i>	TR	EV	OL	EXT
BS Accounting	■			
Bachelor of Business Administration			■	
BS Finance	■			
BS International Business	■			
BS Management	■			
BS Management Information Systems	■			
BS Marketing	■			

Graduate:

Master of Business Administration		■	■	
-----------------------------------	--	---	---	--

Department of Historical, Legal & Leadership Studies

Undergraduate:

BS Business & Professional Leadership		■	■	
BS Criminal Justice	■		■	
BA, BS History	■			
BS Legal Studies	■			
BS Organizational Leadership	■		■	
BS Political Science	■			

College of Christian Ministries & Religion

Undergraduate:

	TR	EV	OL	EXT
Associate of Ministerial Leadership			■	■
BS Children, Youth & Family Ministries	■			
BA Multidisciplinary Studies	■			
BS Ministerial Leadership		■	■	■
BA Missional Ministries	■			
BS Practical Ministries	■			

Graduate:

Master of Divinity		■	■	
MA Ministerial Leadership		■	■	■
MA Theological Studies		■	■	



Academic Programs

College of Education

Undergraduate:

	TR	EV	OL	EXT
BS Elementary Education	■			
BS/MEd Exceptional Student Education (4+1)	■			
BS Kinesiology/Exercise Science	■			
BS Kinesiology/ Pre-Physical Therapy	■			
BS Music Education	■			
BS Secondary Biology (6-12)	■			
BS Secondary English (6-12)	■			
BS Secondary Mathematics (6-12)	■			
BS Secondary Social Science (6-12)	■			
BS Sport Management	■			

Graduate:

EdD*			■	
MEd Arts & Academic Interdisciplinary Education*			■	
MEd Educational Leadership			■	
MEd Elementary Education			■	

*Programs are hybrid, requiring on-campus courses during the summer.

College of Education *(continued)*

Graduate:

	TR	EV	OL	EXT
MEd Exceptional Student Education			■	
MEd ESE/Educational Therapy	■		■	
MEd Reading Education			■	
MEd TESOL			■	

College of Natural & Health Sciences

Undergraduate:

BS Biology/Pre-Med	■			
BS General Biology	■			
BA Mathematics	■			
BS Nursing	■			
RN to BSN			■	



Regional Campuses

Puyallup Campus - Puyallup, WA

Jacksonville Campus - Jacksonville, FL

Extension Sites

Bayside College - Bradenton, FL

C3 College - Clayton, NC

Central College - Florence, KY

Chapelhill Leadership School - Douglasville, GA

Faith Ministry College - Summerville, SC

Ft. Lauderdale Extension Site - Ft. Lauderdale, FL

Grace College - Lutz, FL

Iglesia El Calvario - Orlando, FL

Ignite School of Ministry - Gainesville, FL

KingsGate College - Oklahoma City, OK

Lifepoint Leadership College - Clarksville, TN

Meadowbrook College - Ocala, FL

Miami Leadership Institute - Miami, FL

Mid-Atlantic Extension Site - Williamsburg, VA

Missions.Me - Rochester, MI

Timberlake Leadership College - Redmond, WA

Virginia Beach Extension Site - Virginia Beach, VA

Ministry Partners

Calvary Life College - Winter Park, FL

Clearview Foursquare - Snohomish, WA

Church of the Redeemer - Gaithersburg, MD

Engage Master's Commission Tampa Bay - St. Petersburg, FL

Lift School of Ministry - Venice, FL

Missio Dei: Mission of God Ministries - Macon, GA

Remedy Leadership Institute - Christiana, PA

Sarasota College of Ministry - Sarasota, FL

Shreveport Community Church - Shreveport, LA

Soul Church - San Diego, CA

Treasure Coast Assembly of God - Vero Beach, FL

Dual Enrollment Sites

Calvary Christian Academy - Jacksonville, FL

Faith Christian Academy - Orlando, FL

Foundation Academy - Winter Garden, FL

Grace Christian Academy - Valrico, FL

Lake Gibson Senior High School - Lakeland, FL

Lakeland Christian School - Lakeland, FL

Pine Castle Christian Academy - Orlando, FL

Real Life Christian Academy - Clermont, FL

Ridge Community High School - Davenport, FL

The Rock School - Gainesville, FL

Seacoast Christian Academy - Jacksonville, FL





Honors Program

Semester GPA

2009		2010		2011		2012		2013		2014		2015
Fall	Spring	Fall	Spring	Fall	Spring	Fall	Spring	Fall	Spring	Fall	Spring	
3.70	3.63	3.78	3.81	3.81	3.80	3.83	3.85	3.87	3.89	3.89	3.87	



Yearly GPA

2009-2010	2010-2011	2011-2012	2012-2013	2013-2014	2014-2015
3.66	3.79	3.81	3.84	3.88	3.88

Entrance Enrollment

2009-2010	2010-2011	2011-2012	2012-2013	2013-2014	2014-2015	2015-2016
33	26	17	33	42	50	58

Total Enrollment

2009	2010	2011	2012	2013	2014	2015
33	47	58	71	79	105	158

Graduation Rate from Program

Graduation Rate	43.42%
<i>(Factoring in Transfers)</i>	50.77%

Institutions include George Washington University, Baylor University, Missouri State University, Florida State University, LECOM and SEU

Graduate School

Percentage of Graduates from Honors in Graduate/Professional School	40%
---	-----

Scholarships

Started at \$2,000 per year
Currently at \$3,500 per year





2015 Fall Enrollment Summary

Undergraduate	New	Returning	Total	Full-Time	Part-Time
Traditional	974	1,481	2,455	2,389	66
Blended Evening	10	33	43	34	9
Online	111	290	401	248	153
Extended Education	293	220	513	478	35
Non-Degree	434	150	584	36	548
Total Undergraduate	1,822	2,174	3,996	3,185	811
Total New Freshmen	979	—	979	918	61



Graduate	New	Returning	Total	Full-Time	Part-Time
MA Theological Studies	6	19	25	11	14
Master of Divinity	12	6	18	7	11
MA Ministerial Leadership	35	40	75	28	47
Master of Business Administration	61	75	136	56	80
MEd Arts & Academic Interdisciplinary Education	2	10	12	2	10
MEd Educational Leadership	14	45	59	14	45
MEd Elementary Education	4	19	23	7	16
MEd Exceptional Student Education	2	12	14	8	6
Med ESE/Educational Therapy	5	4	9	1	8
MEd Reading Education	9	8	17	8	9
MEd TESOL	8	8	16	7	9
MA Human Services	11	17	28	9	19
MS Marriage & Family Therapy	3	3	6	5	1
MS Professional Counseling	13	21	34	30	4
MS School Counseling	4	3	7	6	1
EdD	0	58	58	44	14
Non-Degree	1	4	5	0	5
Total Graduate	190	352	542	201	341
Total University Enrollment	2,012	2,526	4,538	3,386	1,152



Enrollment by Major

College of Arts & Media

Undergraduate:

General Education Studies

Associate of Arts	80
-------------------	----

Department of Communication

BA, BS Broadcasting	52
---------------------	----

BA, BS Communication	126
----------------------	-----

BA, BS Digital Journalism	18
---------------------------	----

BA, BS Film Production	59
------------------------	----

BA, BS Graphic Design	44
-----------------------	----

BA, BS Journalism/Public Relations	17
------------------------------------	----

BS Media Ministries	5
---------------------	---

BA, BS Public Relations	5
-------------------------	---

BA, BS Theatre	3
----------------	---

Department of English & Foreign Languages

BA English	39
------------	----

BA English & Intercultural Studies	37
------------------------------------	----

Department of Music

BS Church Music	29
-----------------	----

BA Music	6
----------	---

BS Music Business	43
-------------------	----

College of Arts & Media *(continued)*

Department of Music

BM Music Performance	17
----------------------	----

Pre-Music	39
-----------	----

College of Behavioral & Social Sciences

Undergraduate:

BS Human Services	70
-------------------	----

BS Psychology	202
---------------	-----

BS Social Work	91
----------------	----

Graduate:

MA Human Services	28
-------------------	----

MS Marriage & Family Therapy	6
------------------------------	---

MS Professional Counseling	34
----------------------------	----

MS School Counseling	7
----------------------	---



College of Business & Legal Studies

Department of Business Administration

Undergraduate:

Bachelor of Business Administration	26
BS Accounting	52
BS Finance	27
BS International Business	44
BS Management	114
BS Management Information Systems	30
BS Marketing	56

Graduate:

Master of Business Administration	136
-----------------------------------	-----

Department of Historical, Legal & Leadership Studies

Undergraduate:

Associate of Criminal Justice	1
BS Business & Professional Leadership	80
BS Criminal Justice	101
BA, BS History	21
BS Legal Studies	33
BS Organizational Leadership	97
BS Political Science	8

College of Christian Ministries & Religion

Undergraduate:

Associate of Ministerial Leadership	183
BS Children, Youth & Family Ministries	30
BS Church Ministries	19
BA Interdisciplinary Studies	6
BA Multidisciplinary Studies	71
BS Ministerial Leadership	380
BA Missional Ministries	41
BS Practical Ministries	120
BS Practical Theology	16
BS Youth & Family Ministries	47

Graduate:

MA Ministerial Leadership	75
MA Theological Studies	25
Master of Divinity	18



Enrollment by Major *(continued)*

College of Education

Undergraduate:

BS Elementary Education	161
BS/MEd Exceptional Student Education (4+1)	55
BS Kinesiology	35
BS Kinesiology/Physical Therapy	44
BS Music Education	32
BS Secondary Biology (6-12)	8
BS Secondary English (6-12)	29
BS Secondary Mathematics (6-12)	12
BS Secondary Social Science (6-12)	16
BS Sport Management	139

Graduate:

EdD	58
MEd Arts & Academic Interdisciplinary Education	12
MEd Educational Leadership	59
MEd Elementary Education	23
MEd Exceptional Student Education	14
MEd ESE/Educational Therapy	9
MEd Reading Education	17
MEd TESOL	16



College of Natural & Health Sciences

Undergraduate:

BS Biology/Pre-Med	21
BS General Biology	12
BA Mathematics	12
BS Nursing	41
Pre-Biology	99
Pre-Mathematics	1
Pre-Nursing	107



Undergraduate Totals:

College of Arts & Media	539
College of Behavioral & Social Sciences	363
College of Business & Legal Studies	690
College of Christian Ministries & Religion	993
College of Education	531
College of Natural & Health Sciences	293
The Academy	42
Dual Enrolled	530
Non-Degree	12
Undeclared	3

Total Undergraduate Students 3,996

Graduate Totals:

College of Behavioral & Social Sciences	75
College of Business & Legal Studies	136
College of Christian Ministries & Religion	118
College of Education	208
Non-Degree	5

Total Graduate Students 542

Total University Enrollment 4,538

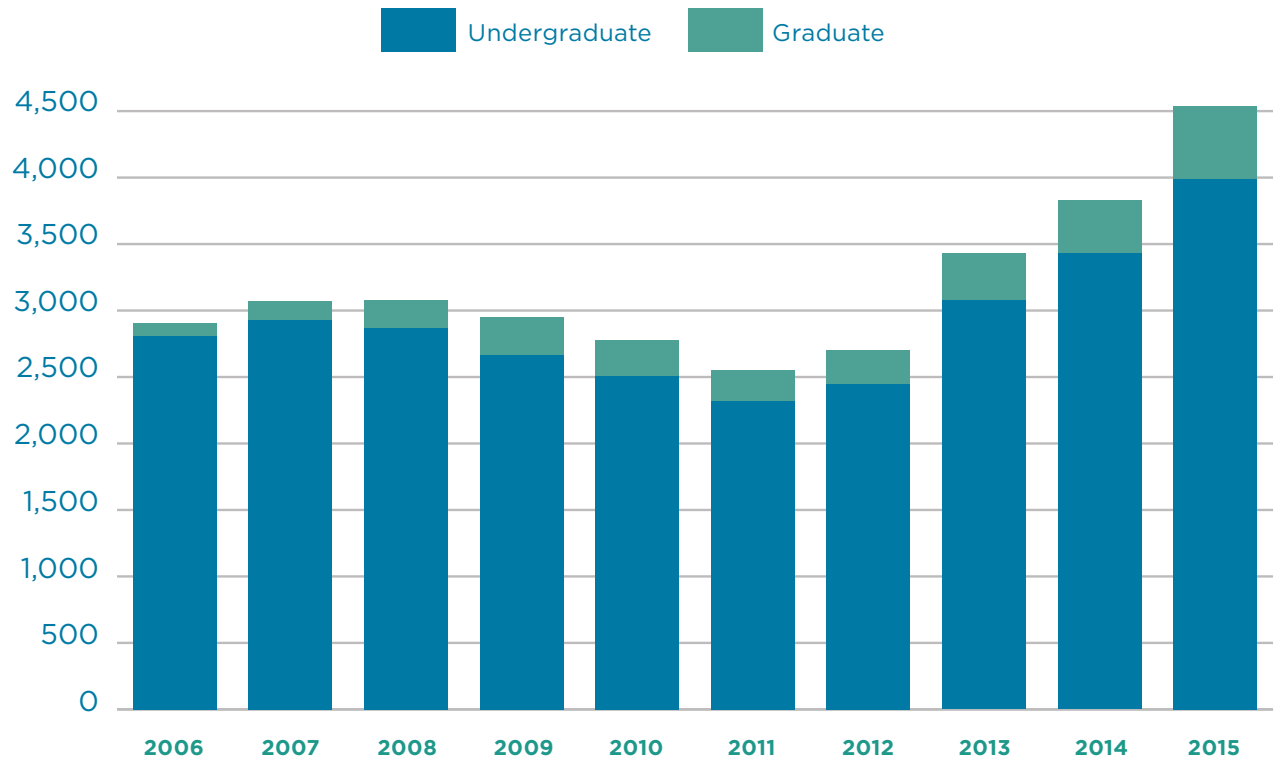




Total Enrollment, 2006-2015

	2006	2007	2008	2009	2010	2011	2012	2013	2014	2015
Undergraduate	2,810	2,931	2,867	2,665	2,510	2,320	2,448	3,083	3,436	3,996
Graduate	91	138	208	285	269	226	255	351	398	542
Total	2,901	3,069	3,075	2,950	2,779	2,546	2,703	3,434	3,834	4,538



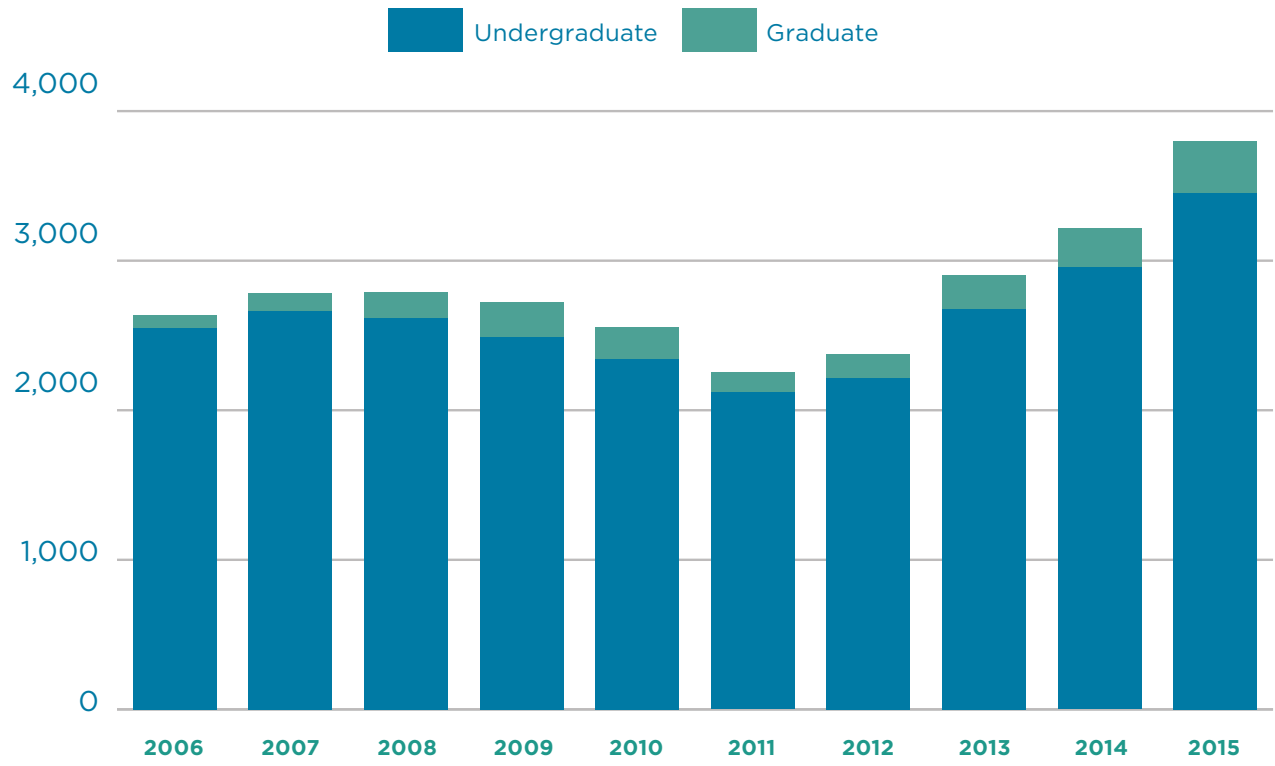




Full-Time Equivalency Enrollment, 2006–2015

	2006	2007	2008	2009	2010	2011	2012	2013	2014	2015
Undergraduate	2,551	2,664	2,618	2,494	2,348	2,126	2,220	2,676	2,955	3,455
Graduate	86	116	171	231	209	132	156	224	260	343
Total	2,637	2,780	2,789	2,725	2,557	2,258	2,376	2,901	3,215	3,798

Full-time equivalency: Three part-time students equal one full-time equivalent student.



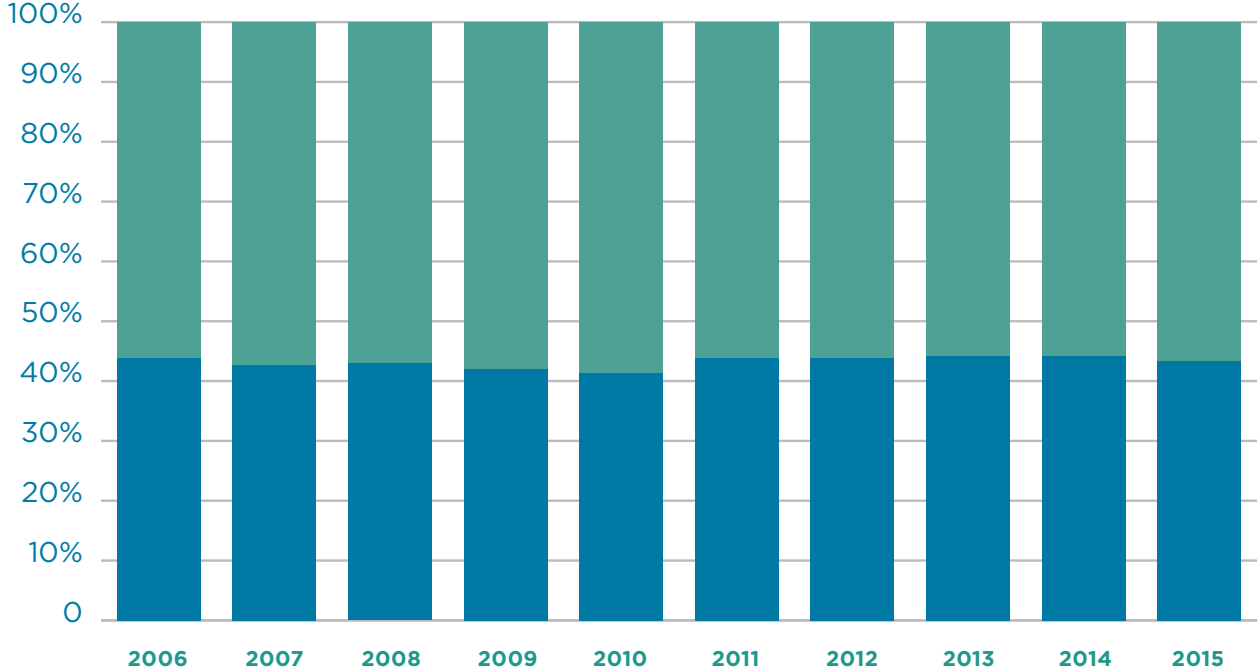


Enrollment by Gender, 2006-2015

	2006	2007	2008	2009	2010	2011	2012	2013	2014	2015
Males	1,276	1,314	1,326	1,238	1,150	1,118	1,186	1,512	1,677	1,972
Percentage of Males	44.0%	42.8%	43.1%	42.0%	41.4%	43.9%	43.9%	44.3%	44.2%	43.5%
Females	1,625	1,755	1,749	1,712	1,629	1,428	1,517	1,898	2,118	2,561
Percentage of Females	56.0%	57.2%	56.9%	58.0%	58.6%	56.1%	56.1%	55.7%	55.8%	56.5%



Males Females



Enrollment by Race & Ethnicity, 2009-2015

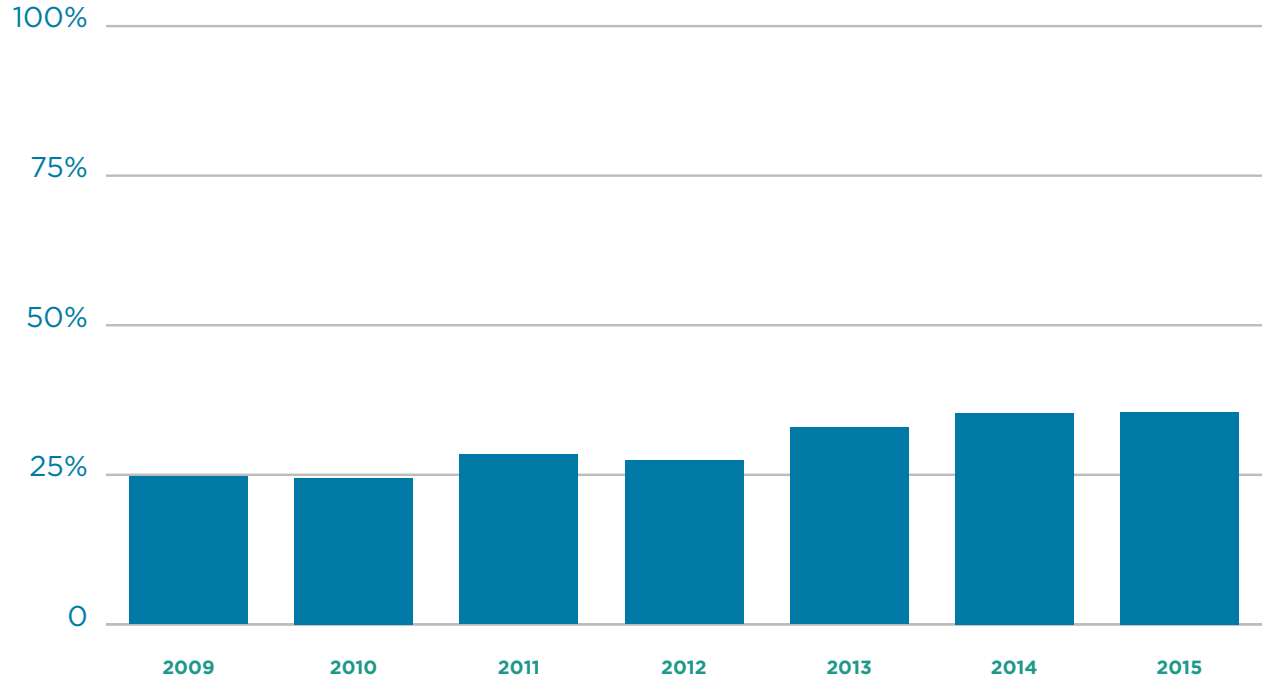
Racial/Ethnic Group	2009	2010	2011	2012	2013	2014	2015
Nonresident Alien	2	53	23	21	28	55	72
Black or African-American	258	245	263	273	438	527	631
American Indian/Alaska Native	7	6	10	12	12	15	14
Asian [†]	32	25	24	29	46	56	75
Hawaiian/Pacific Islander [†]		2	3	5	12	16	21
Hispanics of Any Race	342	320	342	349	505	593	754
White	1,943	1,852	1,666	1,822	2,125	2,251	2,733
Two or More Races [†]		2	20	19	27	21	12
Race/Ethnicity Unknown	366	274	195	173	241	300	226
Ethnic Minority Percentage*	24.7%	24.5%	28.4%	27.4%	32.9%	35.3%	35.5%

[†] Prior to 2010, race and ethnicity was reported under the old categories which combined Asian and Hawaiian/Pacific Island groups and did not include Two or More Races.

*Nonresident Alien and Race/Ethnicity Unknown categories are excluded from this calculation.



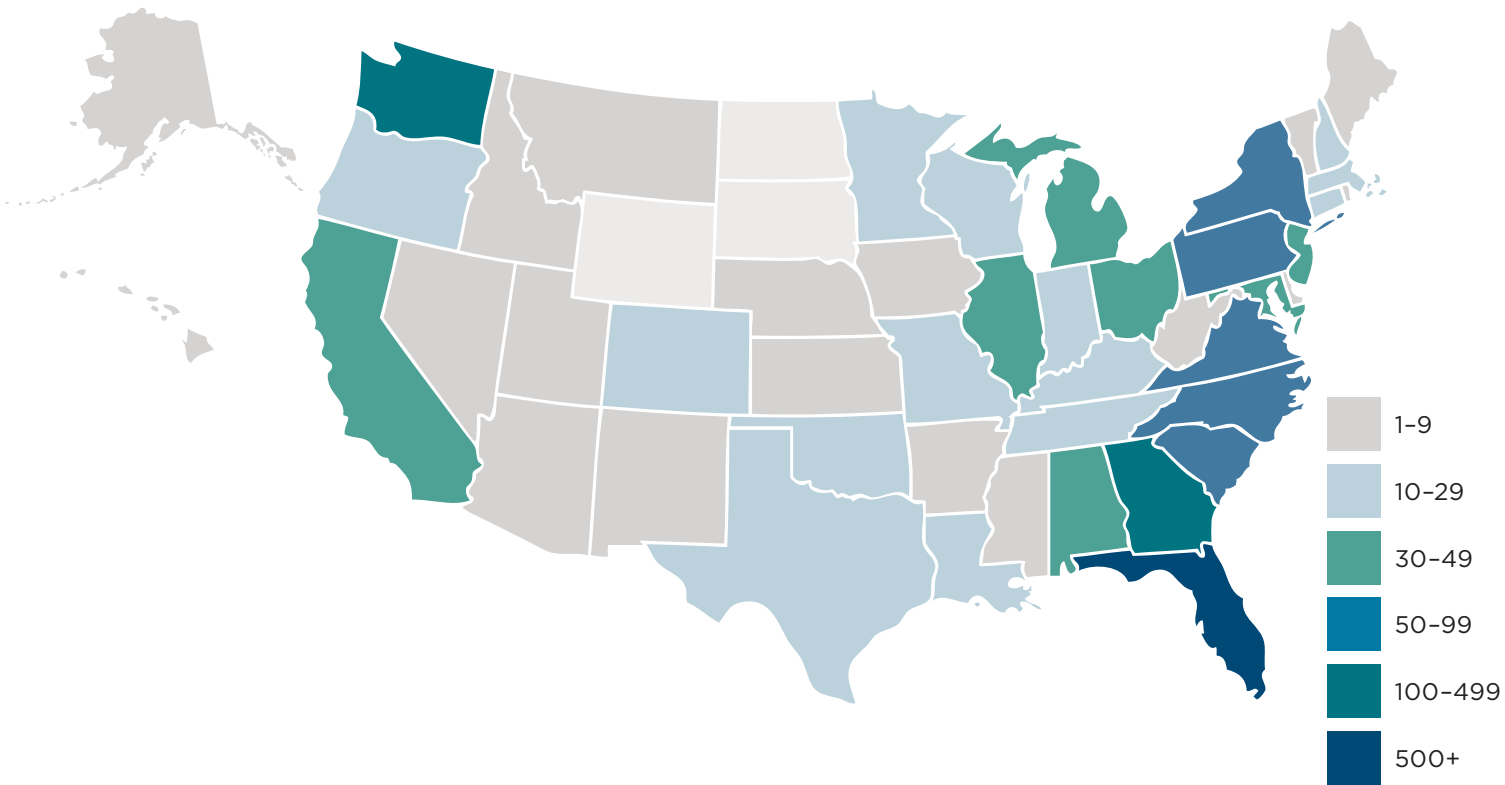
Ethnic Minority Percentage



Enrollment by State or U.S. Territory

State/Territory	Enrolled	State/Territory	Enrolled	State/Territory	Enrolled
Alabama	43	Kentucky	29	Ohio	38
Alaska	4	Louisiana	18	Oklahoma	12
Arizona	9	Maine	2	Oregon	11
Arkansas	4	Maryland	33	Pennsylvania	75
California	37	Massachusetts	11	Puerto Rico	4
Colorado	25	Michigan	42	Rhode Island	3
Connecticut	17	Minnesota	11	South Carolina	50
Delaware	7	Mississippi	5	South Dakota	0
District of Columbia	3	Missouri	15	Tennessee	27
Florida	3,280	Montana	4	Texas	26
Georgia	128	Nebraska	5	Utah	1
Guam	1	Nevada	3	Vermont	3
Hawaii	2	New Hampshire	10	Virginia	71
Idaho	5	New Jersey	43	Washington	130
Illinois	33	New Mexico	2	West Virginia	6
Indiana	21	New York	68	Wisconsin	10
Iowa	7	North Carolina	62	Wyoming	0
Kansas	5	North Dakota	0		

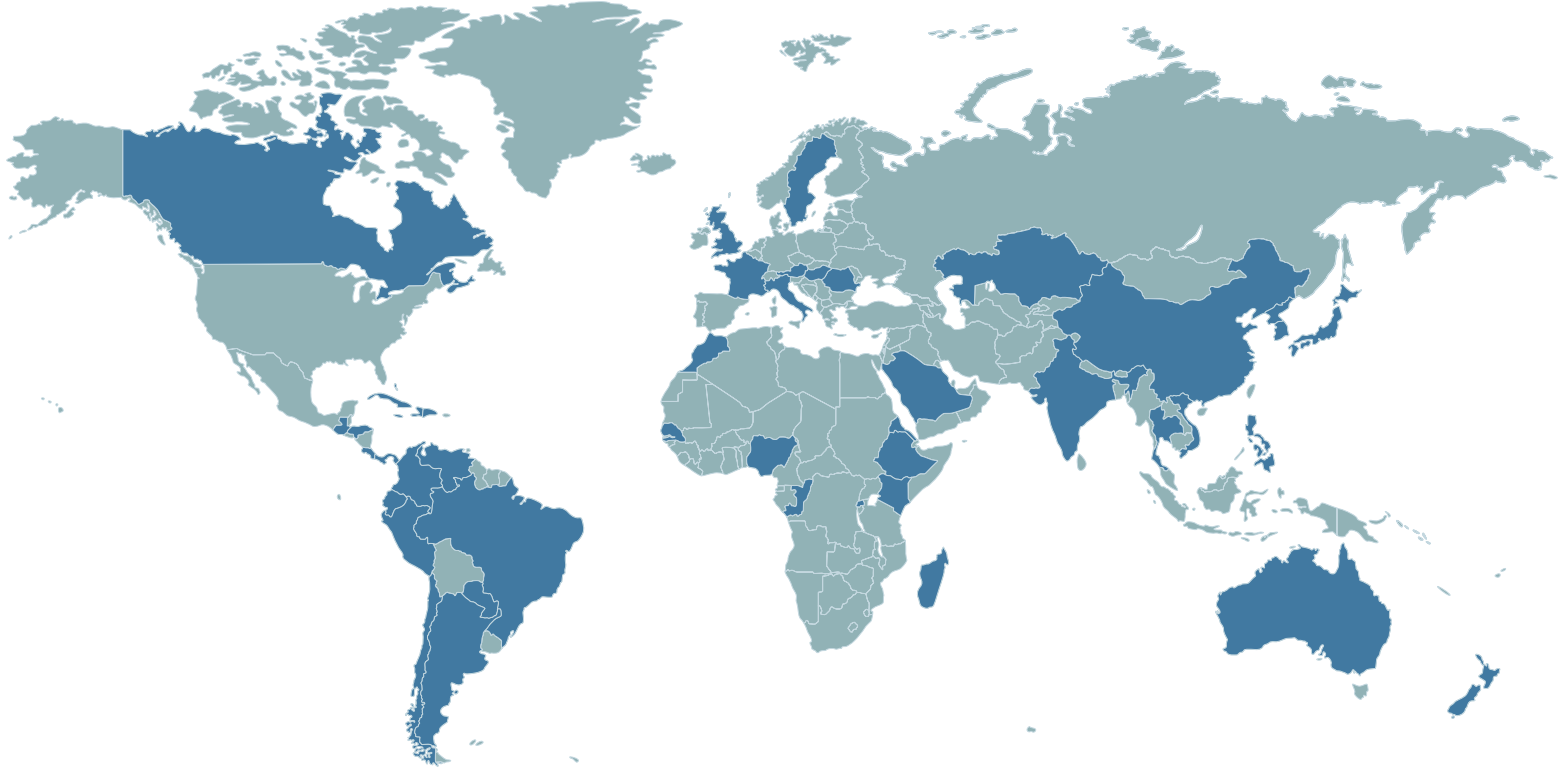




International Enrollment

Nation	Enrolled	Nation	Enrolled	Nation	Enrolled
Argentina	2	Guatemala	2	Paraguay	2
Australia	1	Haiti	9	Peru	4
Austria	1	Honduras	4	Philippines	4
Bahamas	5	Hungary	1	Romania	1
Brazil	9	India	2	Rwanda	1
Canada	13	Italy	1	Saudi Arabia	1
Chile	1	Jamaica	2	Senegal	1
China	4	Japan	3	Slovakia	1
Colombia	6	Kazakhstan	1	Sweden	3
Congo	1	Kenya	4	Thailand	3
Costa Rica	1	Korea, North	1	United Kingdom	3
Cuba	2	Korea, South	2	Venezuela	4
Dominican Republic	2	Madagascar	1	Vietnam	1
Ecuador	2	Netherlands	4		
Eritrea	1	New Zealand	1	Total International	131
Ethiopia	1	Nigeria	9	Percentage of Total	2.9%
France	1	Panama	2	Total Countries	47

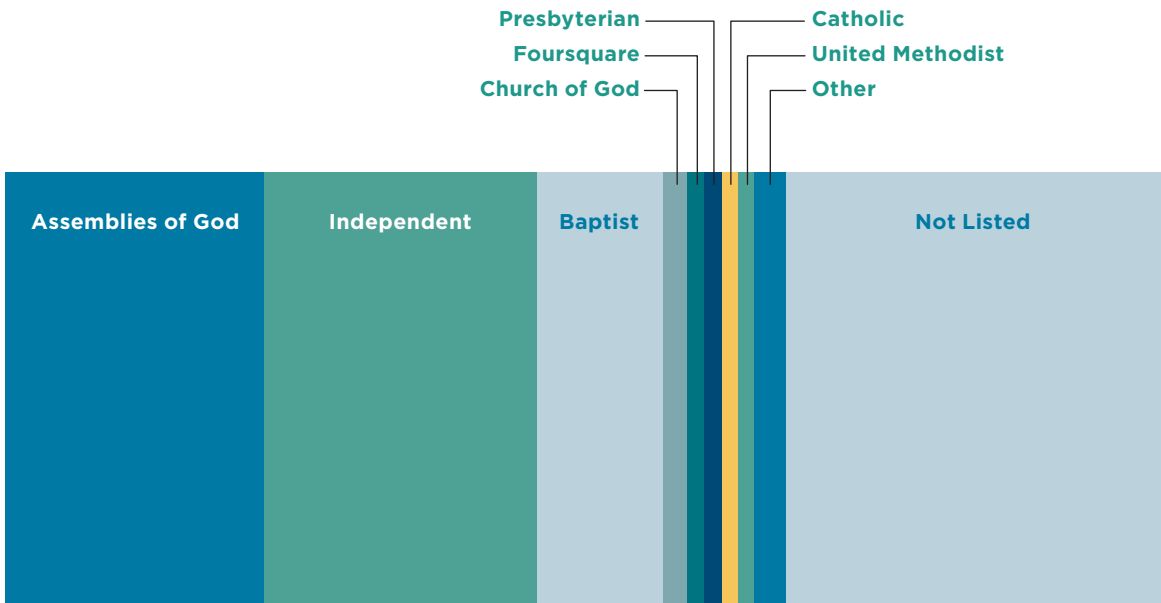




Enrollment by Denomination

Denomination	2013		2014		2015	
	Number	Percent	Number	Percent	Number	Percent
Assemblies of God	1,029	30.0%	976	25.5%	1,017	22.4%
Independent	747	21.8%	860	22.4%	1,073	23.6%
Baptist	418	12.2%	461	12.0%	495	10.9%
Church of God	65	1.9%	78	2.0%	96	2.1%
Foursquare	0	0.0%	26	0.7%	70	1.5%
Presbyterian	71	2.1%	58	1.5%	66	1.5%
Catholic	52	1.5%	57	1.5%	64	1.4%
United Methodist	32	0.9%	39	1.0%	62	1.4%
Other	251	7.3%	136	3.5%	123	2.7%
Not Listed	769	22.4%	1,169	30.5%	1,472	32.4%



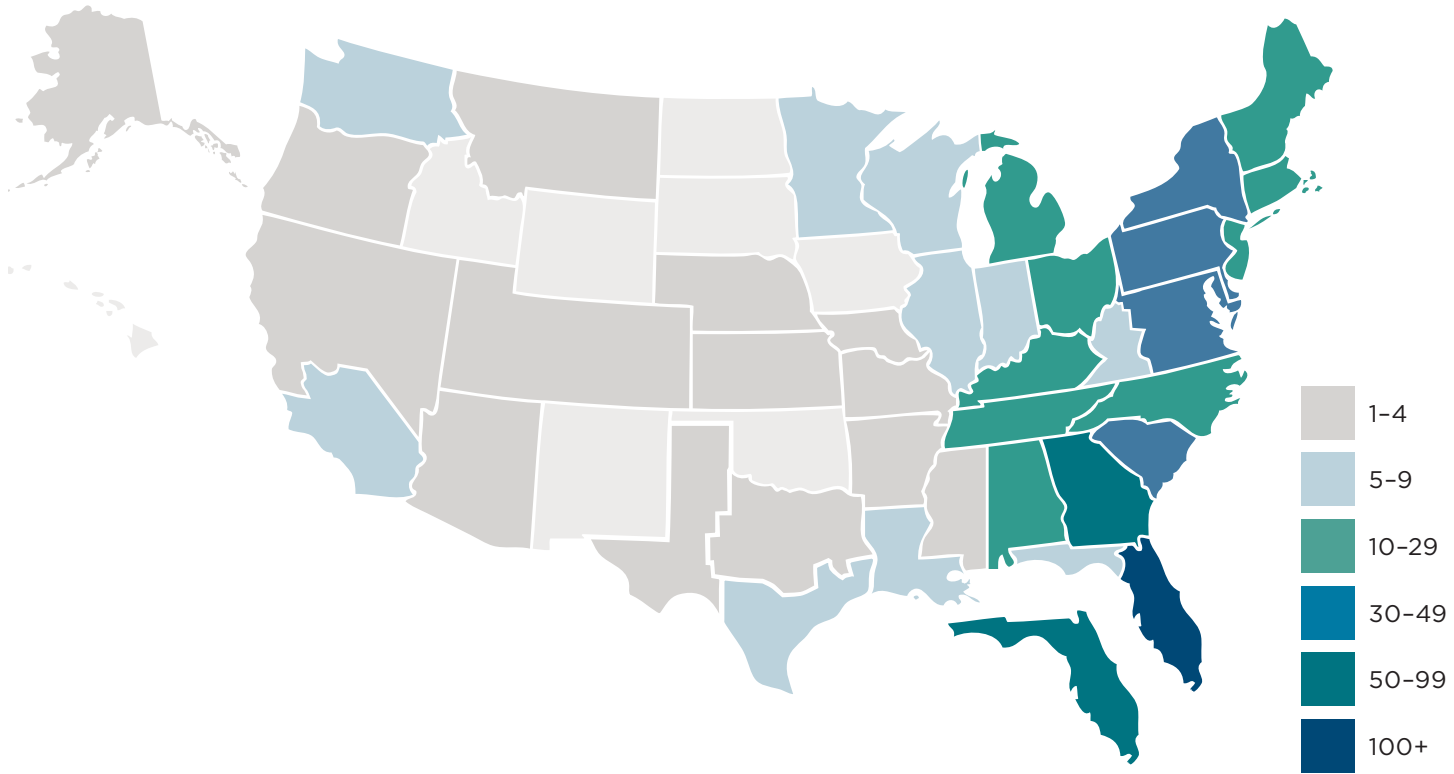


Enrollment by Assemblies of God District

Sponsoring Districts	2013	2014	2015
Alabama	17	22	25
Appalachian	4	6	9
Florida Multicultural	42	60	71
Georgia	89	65	68
North Carolina	16	18	20
Peninsular Florida	374	383	404
South Carolina	26	23	31
Tennessee	3	4	10
West Florida	17	14	9

Top Five Other Districts	2013	2014	2015
Pennsylvania/Delaware	41	41	46
New York	37	37	35
Potomac	32	32	34
New Jersey	19	19	26
Ohio	27	27	22
Other Districts	280	225	207
Total AG Enrollment	1,029	976	1,017





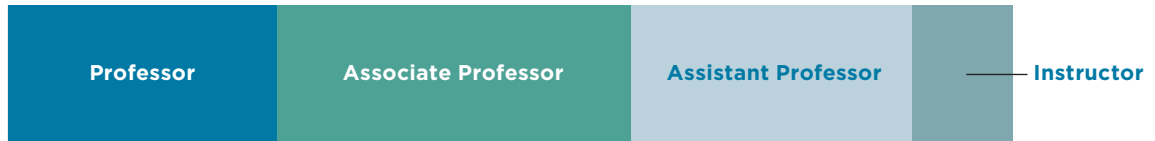
Faculty Division & Rank

Division	Professor	Associate Professor	Assistant Professor	Instructor	Total
College of Arts & Media	5	11	12	1	29
Communication	1	4	4	0	9
English & Foreign Languages	1	2	7	0	10
Music	3	5	1	1	10
College of Behavioral & Social Sciences	4	5	3	3	15
College of Business & Legal Studies	5	8	4	2	19
Business Administration	3	5	2	1	11
Historical, Legal & Leadership Studies	2	3	2	1	8
College of Christian Ministries & Religion	11	3	4	5*	23
College of Education	8	7	8	0	23
College of Natural & Health Sciences	1	10	5	3	19
Library Faculty	0	4	1	0	5
Administration and Ranked Staff	6	5	5	1	17

**Includes one missionary in residence*



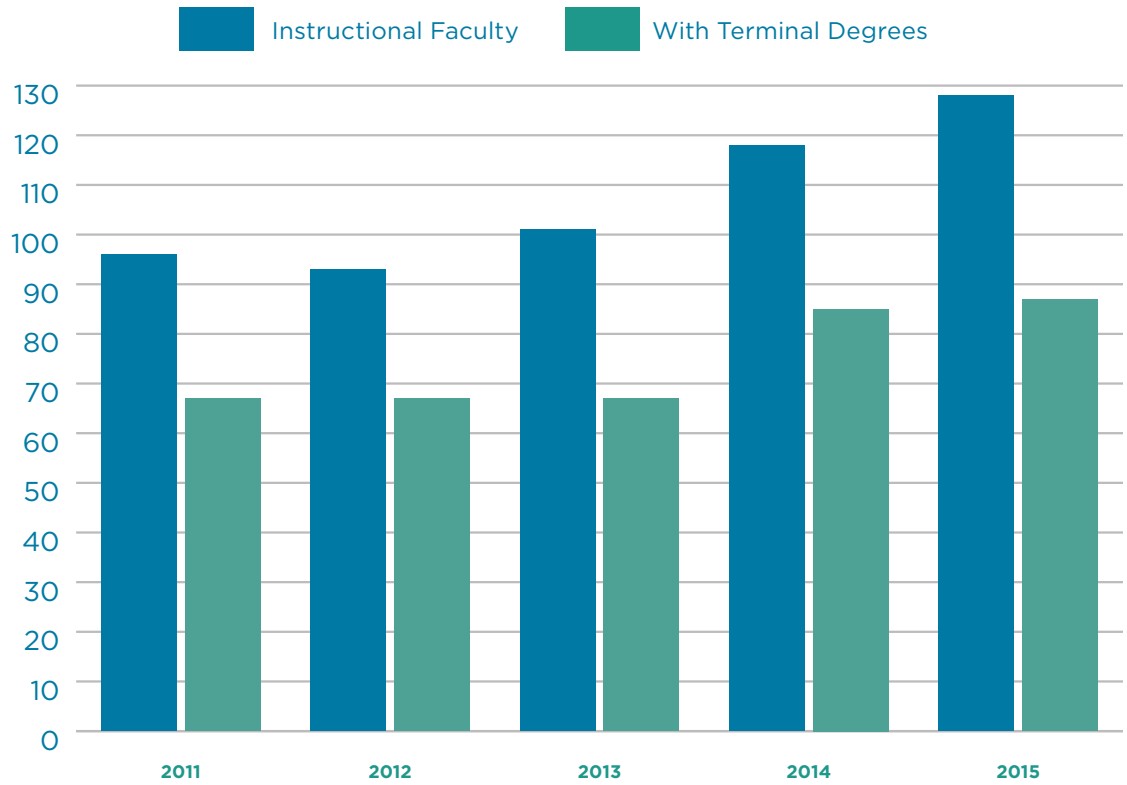
Division	Professor	Associate Professor	Assistant Professor	Instructor	Total
Instructional Faculty	34	44	36	14	128
Percentage of Instructional Faculty	26.6%	34.4%	28.1%	10.9%	
Total Faculty	40	53	42	15	150
Percentage of Total Faculty	26.7%	35.3%	28.0%	10.0%	
Instructional Faculty with Terminal Degrees	34	38	15	0	87
Percentage of Instructional Faculty with Terminal Degrees	100.0%	86.4%	41.7%	0.0%	68.0%
Total Faculty with Terminal Degrees	40	43	17	0	100
Percentage of Total Faculty with Terminal Degrees	100.0%	81.1%	40.5%	0.0%	66.7%



Instructional Faculty, 2011-2015

College/Department	2011	2012	2013	2014	2015
College of Arts & Media	5	11	12	1	29
Communication	1	4	4	0	9
English & Foreign Languages	1	2	7	0	10
Music	3	5	1	1	10
College of Behavioral & Social Sciences	10	10	11	14	15
College of Business & Legal Studies	19	17	17	19	19
Business Administration	13	12	12	11	11
Historical, Legal & Leadership Studies	6	5	5	8	8
College of Christian Ministries & Religion	17	17	17	22	23
College of Education	11	12	16	19	23
College of Natural & Health Sciences	11	11	13	16	19
Total Instructional Faculty	96	93	101	118	128
Instructional Faculty with Terminal Degrees	67	67	77	85	87
Percentage of Instructional Faculty with Terminal Degrees	69.8%	72.0%	76.2%	72.0%	68.0%





Instructional Faculty Demographics

Age	Number	Percent
Under 30	9	7.0%
30-39	21	16.4%
40-49	24	18.8%
50-59	40	31.3%
60-69	31	24.2%
70-79	3	2.3%
80+	0	0.0%
		Age
25th %		41.5
Mean Age		50.9
75th %		60.6

Gender	Number	Percent
Male	80	62.5%
Female	48	37.5%
Ethnicity		
Nonresident Alien	0	0.0%
Black or African-American	10	7.8%
American Indian/Alaska Native	0	0.0%
Asian	4	3.1%
Hawaiian/Pacific Islander	1	0.8%
Hispanics of Any Race	3	2.3%
White	108	84.4%
Two or More Races	2	1.6%
Race/Ethnicity Unknown	0	0.0%
Ethnic Minorities:		15.6%





Student-to-Faculty Ratio

2006

2007

2008

2009

2010

2011

2012

2013

2014

2015

23.1 to 1

23.8 to 1

22.0 to 1

22.0 to 1

19.1 to 1

18.7 to 1

18.9 to 1

19.5 to 1

18.4 to 1

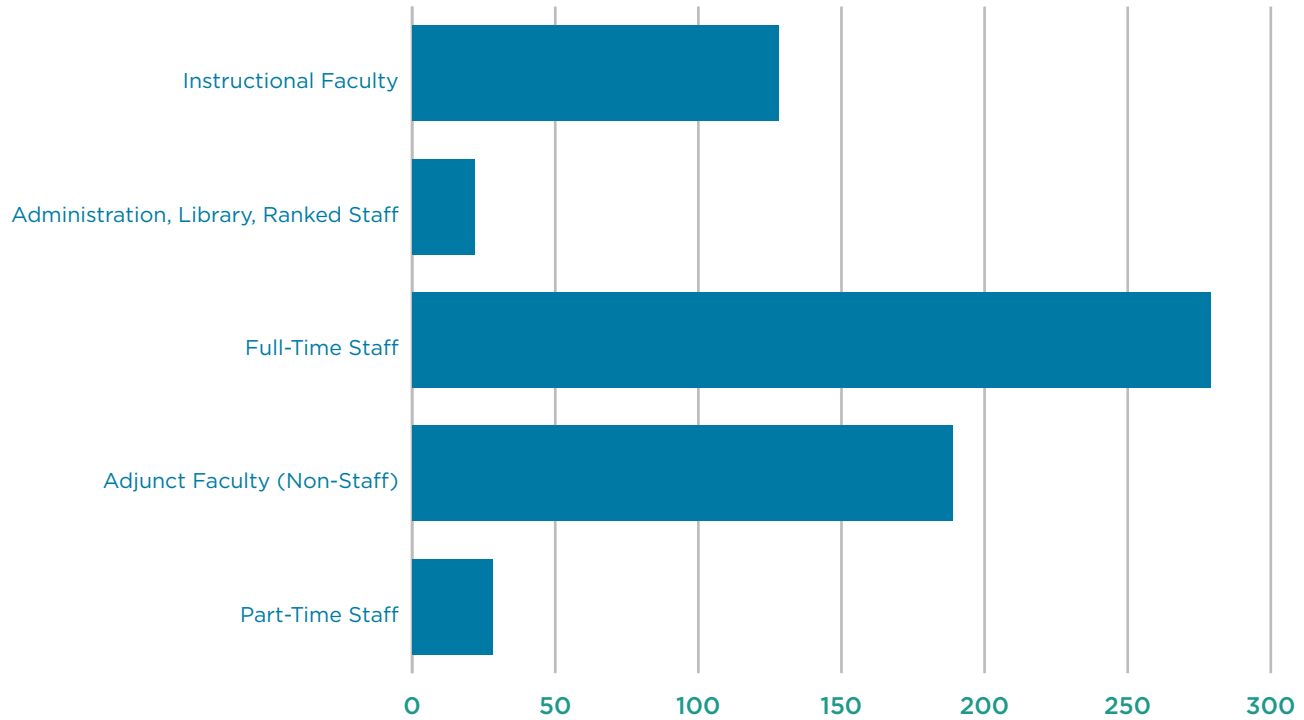
19.8 to 1



Faculty & Staff

Category	Total
Instructional Faculty	128
Administration, Library, Ranked Staff	22
Full-Time Staff	279
Administrative Support Workers	87
Craft Workers	13
First/Midlevel Officials/Managers	47
Laborers and Helpers	8
Professionals	88
Service Workers	34
Technicians	2
Total Full-Time Employees	429
Adjunct Faculty (Non-Staff)	189
Part-Time Staff	28
Total Employees	646





Applications for Freshman Admission

		Applied	Admitted	Percent Admitted	Enrolled	Percent Admitted Who Enrolled
2013	Male	1,020	579	56.8%	432	74.6%
	Female	1,104	681	61.7%	432	63.4%
	Total	2,124	1,260	59.3%	864	68.6%
2014	Male	1,463	635	43.4%	410	64.6%
	Female	1,939	860	44.4%	495	57.6%
	Total	3,402	1,495	43.9%	905	60.5%
2015	Male	1,719	772	44.9%	462	59.8%
	Female	2,104	1,005	47.8%	517	51.4%
	Total	3,823	1,777	46.5%	979	55.1%





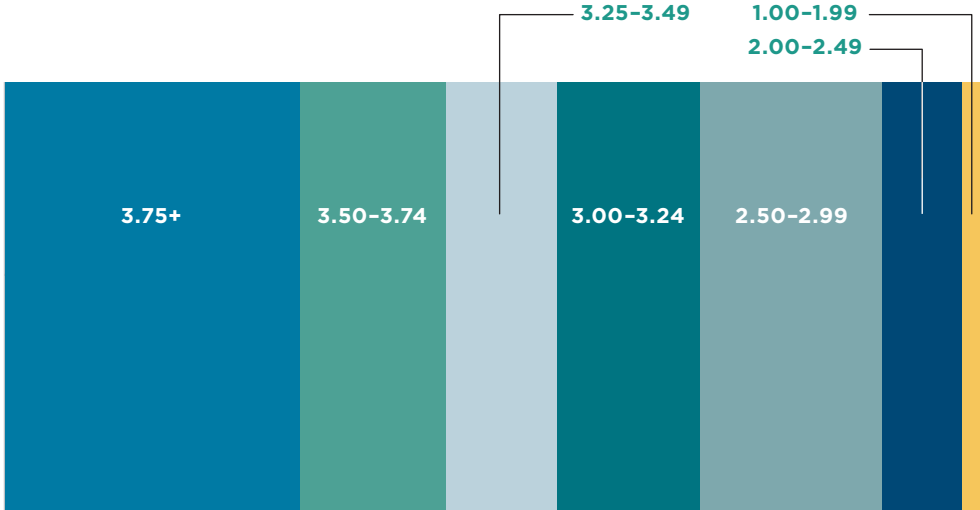
SAT, ACT & GPA for Entering Freshman

	25th Percentile	75th Percentile
SAT Critical Reading	430	550
SAT Math	410	530
SAT Writing	410	530
ACT Composite	17	23
Average SAT Composite <i>(Reading and Math Only)</i>		959
Average SAT Composite <i>(Reading/Math/Writing)</i>		1433
Average ACT Composite		20.3

High School GPA	Percentage
3.75 and higher	30.2%
3.50 to 3.74	15.0%
3.25 to 3.49	11.3%
3.00 to 3.24	14.6%
2.50 to 2.99	18.7%
2.00 to 2.49	8.1%
1.00 to 1.99	2.1%
Below 1.00	0.0%
Average GPA	3.39

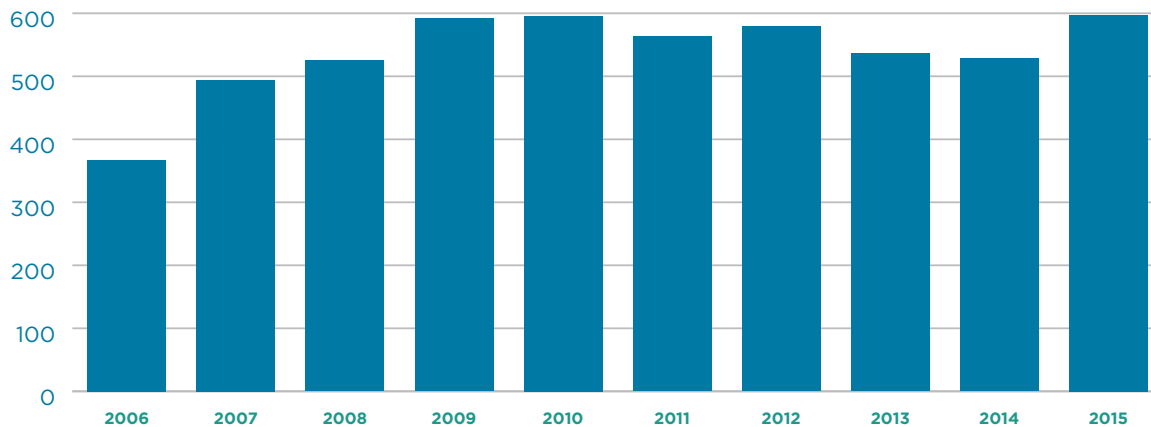


High School GPAs



Completions

	2006	2007	2008	2009	2010	2011	2012	2013	2014	2015
Male	159	229	222	262	235	239	207	240	206	234
Female	208	265	303	330	361	324	372	296	322	363
Total	367	494	525	592	596	563	579	536	528	597

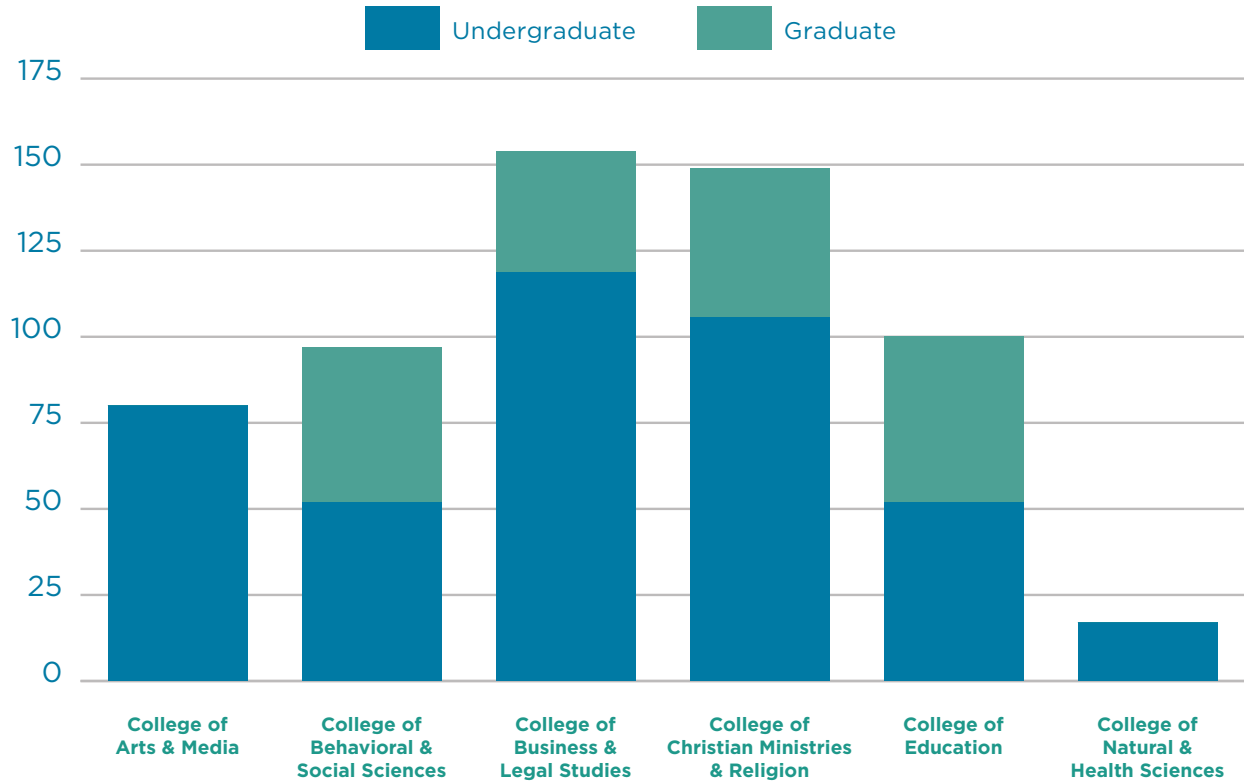


Completions, 2014-2015

By Gender	Associate	Bachelor's	Master's	Total	Percent
Male	8	156	70	234	39.2%
Female	13	249	101	363	60.8%
By Race/Ethnicity					
Nonresident Alien		2	2	4	0.7%
Black or African-American	1	39	17	57	9.5%
American Indian/Alaska Native			1	1	0.2%
Asian		2	1	3	0.5%
Hawaiian/Pacific Islander			1	1	0.2%
Hispanics of Any Race	8	58	21	87	14.6%
White	12	282	124	418	70.0%
Two or More Races		4	1	5	0.8%
Race/Ethnicity Unknown		18	3	21	3.5%
Total	21	405	171	597	

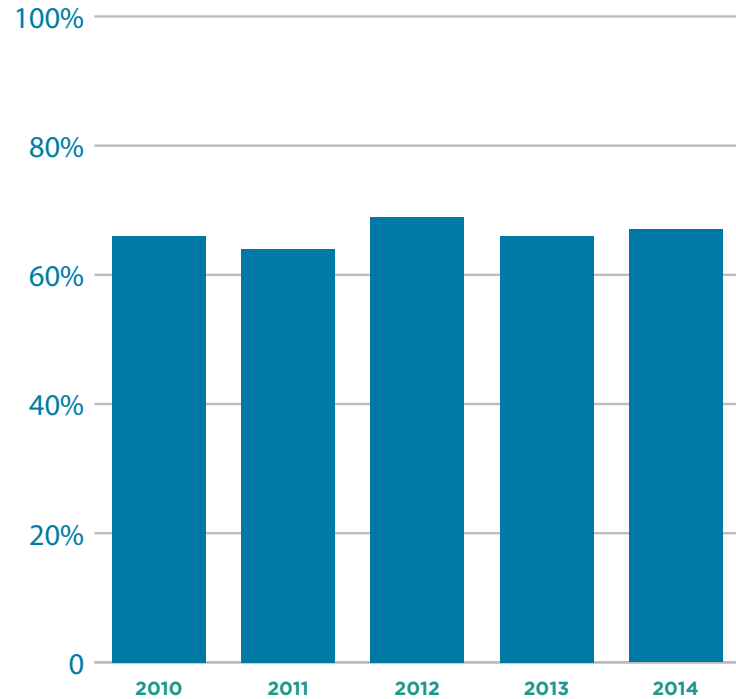
Completions by College/Department, 2014-2015

Undergraduate	Students	Percentage
College of Arts & Media	80	13.4%
Communication	54	9.0%
English & Foreign Languages	9	1.5%
Music	17	2.8%
College of Behavioral & Social Sciences	52	8.7%
College of Business & Legal Studies	119	19.9%
Business Administration	57	9.5%
Historical, Legal & Leadership Studies	62	10.4%
College of Christian Ministries & Religion	106	17.8%
College of Education	52	8.7%
College of Natural & Health Sciences	17	2.8%
Total	426	71.4%
Graduate		
College of Behavioral & Social Sciences	45	7.5%
College of Business & Legal Studies	35	5.9%
College of Christian Ministries & Religion	43	7.2%
College of Education	48	8.0%
Total	171	28.6%



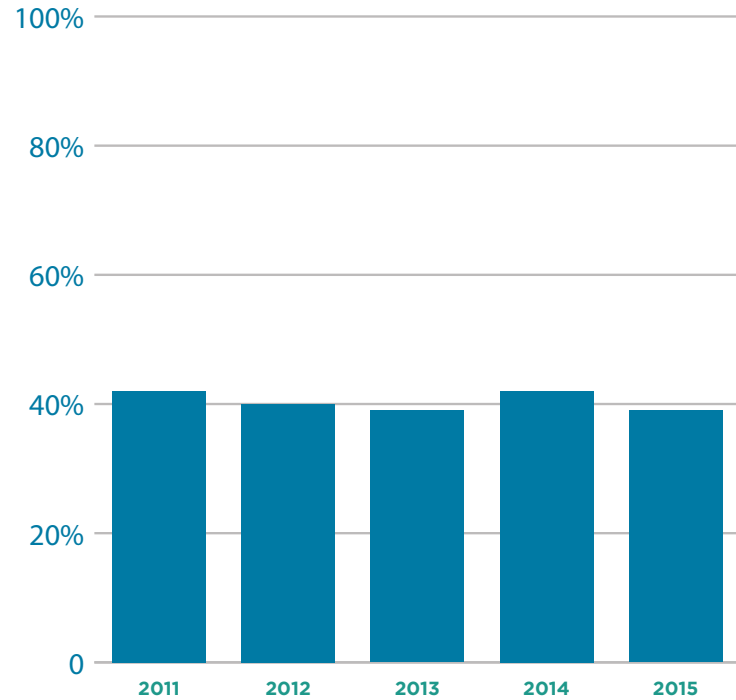
Retention Rates

Freshman Cohort Year	Percent Returned Following Fall	
2010	66%	2011
2011	64%	2012
2012	69%	2013
2013	66%	2014
2014	67%	2015



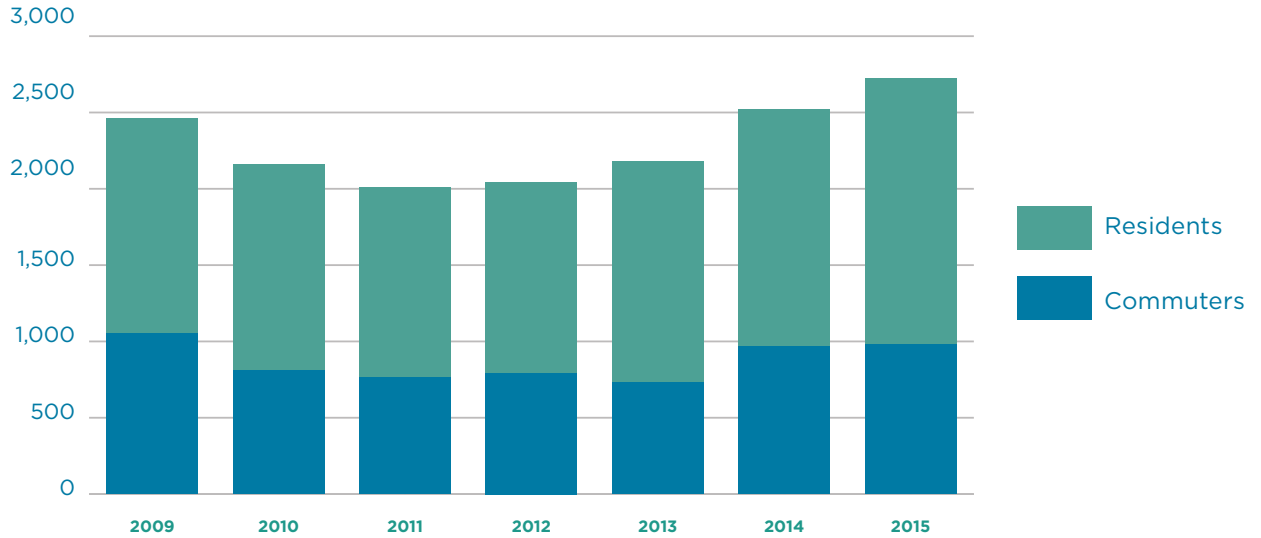
Graduation Rates

Freshman Cohort Year	Graduated Within Six Years	
2005	42%	2011
2006	40%	2012
2007	39%	2013
2008	42%	2014
2009	39%	2015



On-Campus Enrollment

	2009	2010	2011	2012	2013	2014	2015
Commuters	1,058	811	766	793	739	974	981
Residents	1,406	1,347	1,243	1,251	1,443	1,550	1,741



Housing Capacity

Year	Residents	Growth	Capacity	Capacity %
2009	1,406	-5.5%	1,513	92.9%
2010	1,347	-4.2%	1,447	93.1%
2011	1,243	-7.7%	1,423	87.4%
2012	1,251	0.6%	1,355	92.3%
2013	1,443	15.3%	1,474	97.9%
2014	1,550	7.4%	1,449	107.0%
2015	1,741	12.3%	1,434	121.4%

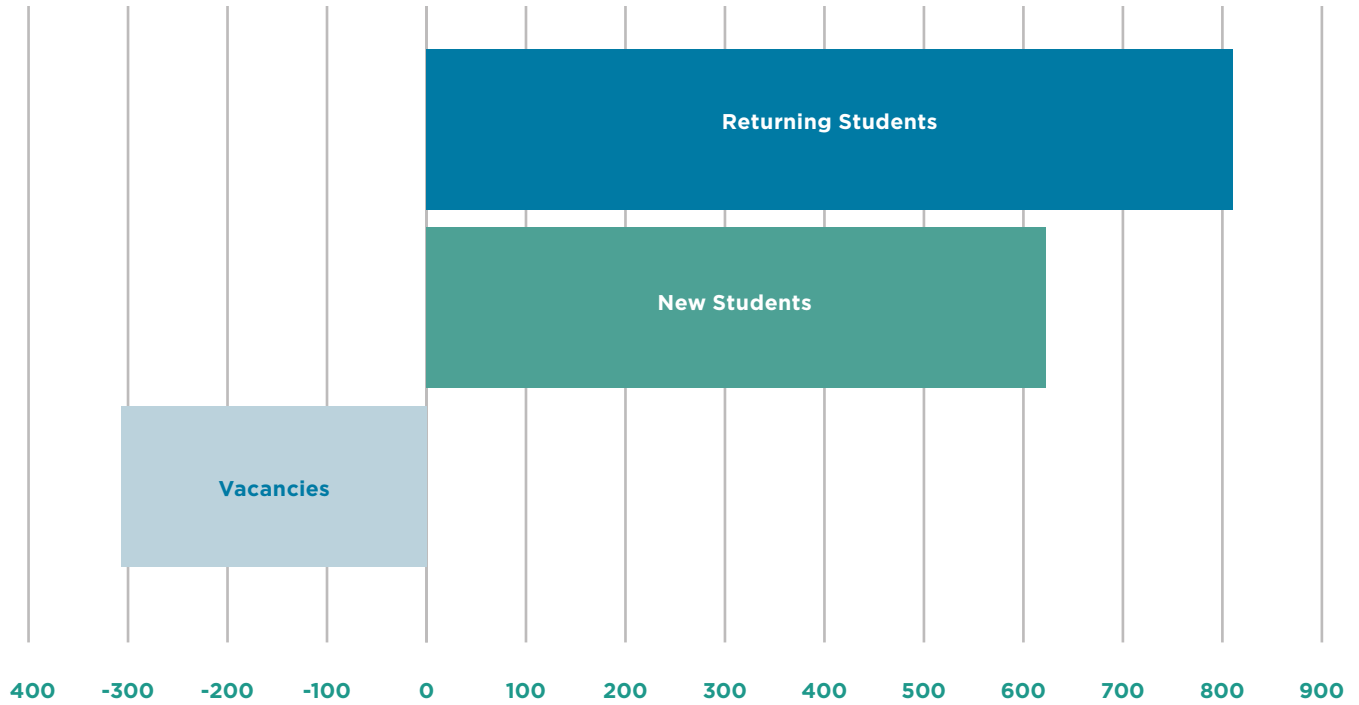


Campus Housing

Residence Hall	Capacity	Returning Students	New Students	Total	Vacancies
Bauer	199	10	185	195	4
Buttercup	35	32	3	35	0
Destino	256	178	76	254	2
South Pointe	21	20	7	27	-6
Valencia	112	65	74	139	-27
Bethany Apartments*		11	11	22	-22
Parkside Apartments*		70	9	79	-79
Other Temporary*		12	3	15	-15
Men's Total	623	398	368	766	-143
Bethany	180	17	162	179	1
South Pointe	79	48	53	101	-22
Esperanza	256	168	85	253	3
Buttercup	40	32	7	39	1
Aventura	256	144	110	254	2
Parkside Apartments*		120	12	132	-132
Other Temporary*		12	5	17	-17
Women's Total	811	541	434	975	-164
Total	1,434	939	802	1,741	-307

*Temporary, off-campus student housing







Transforming minds. Engaging culture:







SOUTHEASTERN
UNIVERSITY

Office of Institutional Effectiveness

1000 Longfellow Blvd. | Lakeland, Florida 33801-6034
863.667.5408 fax 863.667.5200