

FACT Book 2008-2009

Table of Contents

Mission Statement/Board of Regents	1
Accreditation	3
History of Southeastern	5
Points of Excellence	7
Institutional Goals	8-9
Organizational Chart	10-11
Academic Programs	12-13
Athletics	15
Tuition and Fees/Financial Aid	16-19
Enrollment	
<i>Total Enrollment</i>	20
<i>Total Enrollment FTE (Full-time Equivalent)</i>	21
<i>Enrollment by Major</i>	22-24
<i>Enrollment by Gender</i>	25
<i>Enrollment by State of Residence</i>	26-27
<i>Enrollment by Race/Ethnic Group</i>	28
<i>International Student Enrollment</i>	29
<i>Enrollment by Denomination</i>	30
Faculty	31-33
Applications/Admissions	34
SAT/ACT Scores-Entering Freshmen	35
Completions	36-37
Retention and Graduation Rates	38
Housing	39-40
Library and Computer Resources	41
Expenditures/Source of Current Revenues	42
Endowment	43
Notes	44-45

MISSION STATEMENT

Southeastern, a dynamic, Christ-centered university, fosters student success by integrating personal faith and higher learning. Within our loving Pentecostal community, we challenge students to a lifetime of good work and of preparing professionally so they can creatively serve their generation in the Spirit of Christ.



BOARD OF REGENTS MEMBERS

Dr. Charles Kelly, Chairperson
Reverend Billy Glover, Vice Chairman
Reverend Steven Brown, Secretary
Mr. Gardner Altman
Reverend M. Wayne Blackburn
Mr. James Blanchard
Mrs. Mary Jo Bolin-Houser
Reverend Roger Brumbalow
Mr. David Burdine
Reverend David Byerley
Mrs. Jennifer Closshey
Reverend Marvin Dennis
Dr. Mark Floyd
Dr. Nino Gonzalez
Reverend JR Gould
Sen. Oscar N. Harris, Retired, NC Senator
Reverend Mark Jakelsky
Reverend John K. Jordan
Reverend Dennis Lacy
Reverend Steve Mason
Reverend Terry Raburn
Reverend Terry Roberts
Reverend Ramon Rojas
Dr. Mark Rutland
Reverend Robert Thompson
Reverend Randy Valimont
Reverend Max Yeary

ACCREDITATION

Southeastern University is accredited by the **Commission on Colleges of the Southern Association of Colleges and Schools** (1866 Southern Lane, Decatur, GA 30033-4097; telephone: (404) 679-4501) to award bachelor's and master's degrees. Inquiries to the Commission should relate only to the accreditation status of the University and not general admission information.

Other discipline specific accreditations and licensures:

- Council on Social Work Education (CSWE)**
- International Assembly for Collegiate Business Education (IACBE)**
- Florida Department of Education (FDOE)** – *Southeastern University is approved to grant degrees that meet certification requirements for a Florida teaching credential.*



INSTITUTIONAL MEMBERSHIPS

- American Association of Colleges for Teacher Education (AACTE)**
- American Association of Collegiate Registrars and Admissions Officers (AACRAO)**
- Association of Christian Schools International (ACSI)**
- Association of Institutional Research (AIR)**
- The Alliance for Assemblies of God Higher Education (The Alliance)**
- Commission on Colleges of the Southern Association of College and Schools (COC)**
- Council for Christian Colleges and Universities (CCCU)**
- Council of Independent Colleges (CIC)**
- Council on Higher Education Accreditation (CHEA)**
- Florida Association of Colleges and Universities (FACU)**
- Florida Association of Colleges for Teacher Education (FACTE)**
- Florida League of Christian Schools (FLOCS)**
- Independent Colleges and Universities of Florida (ICUF)**
- National Association of Independent Colleges and Universities (NAICU)**
- National Association of Intercollegiate Athletes (NAIA)**
- National Christian College Athletic Association (NCCAA)**
- National Religious Broadcasters (NRB)**

HISTORY OF SOUTHEASTERN UNIVERSITY

Southeastern University was founded in 1935 by Alabama District Superintendent J.C. Thames and other Southeastern District leaders as The South-Eastern Bible Institute.

Originally located in a former high school building in New Brockton, Alabama, SEBI opened its doors to students on November 4, 1935, under the direction of four faculty members. Edgar W. Bethany, Karl M. Gygax, Mrs. Helen B. Stewart, and Miss Myrtle G. Eason composed the original faculty. Two years later, in June, the first graduation exercises were held. Seventeen students received diplomas for the two-year academic program.

SEBI continued classes in New Brockton until 1940 when a decision was made to consolidate the school with Beulah Heights Bible Institute in Atlanta, Georgia. The school was known from 1940 to 1942 as the Beulah Heights—South-Eastern Bible Institute. In the fall of 1942, the District Superintendents of the Southeastern Districts accepted the invitation of Rev. Ralph Byrd and his congregation to move the school to 301-7 Capital Avenue, SW in Atlanta. For two years, Rev. Byrd served the school, without remuneration, as principal and business manager.

In 1946, the Board of Directors voted to secure a permanent location for the full development of the school. A new campus location was purchased later that year in Lakeland, Florida. The Atlanta campus was sold and development of the new site was begun.

Student body growth continued at the new central Florida campus along with the academic program. SEBI became South-Eastern Bible College in 1956 when four-year Bachelor of Arts degree programs were begun. After adding education degrees, the College Board of Directors changed the school name to Southeastern College of the Assemblies of God.

In 1986, Southeastern was granted regional accreditation by the Southern Association of Colleges and Schools. Accreditation was reaffirmed in 1991 and 2001. In 2005, Southeastern College officially became Southeastern University, began offering its first Master's Degree programs, and formed the Colleges of Arts & Sciences, Business, Christian Ministries & Religion, and Education.

What began in 1935 as a Bible-training school is now the largest Assemblies of God educational institution in America, producing future Christian leaders in the fields of church ministries, education, medicine, law, business, communication, psychology, social work, literature, and music.

SOUTHEASTERN UNIVERSITY

Points of Excellence 2008 - 2009

Southeastern University...

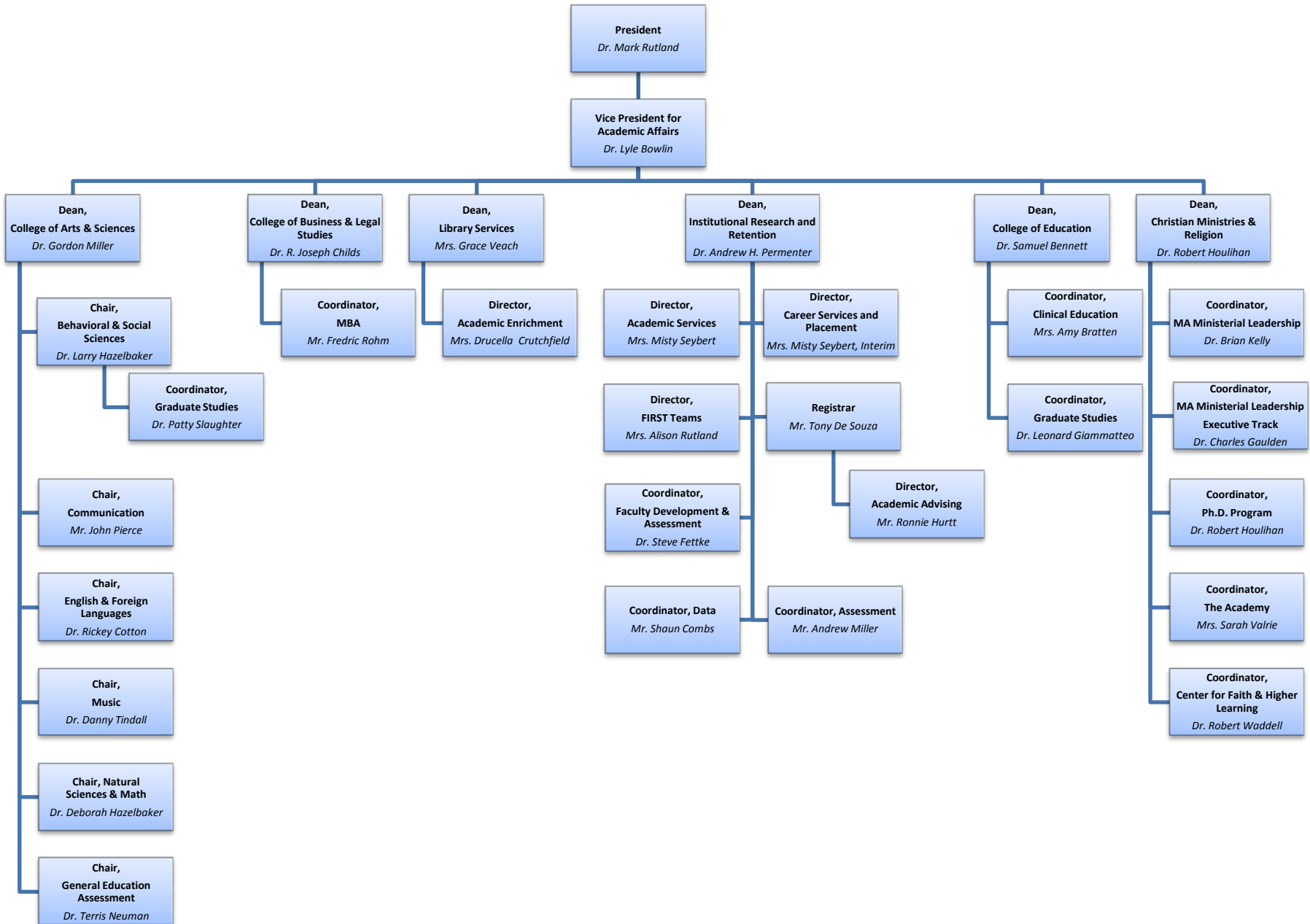
- *Has more than tripled its enrollment, increasing 209% since Dr. Rutland's arrival in Spring 1999.*
- *Has acquired a new facility in West Jerusalem. This dormitory/study center will house the university's new International Studies Program in Jerusalem with classes beginning in spring, 2009. The five story building contains 13,250 square feet of space and will house up to 48 students each session or 96 each semester.*
- *Has opened a new academic building which houses the College of Business and Legal Studies and the College of Education. This new \$5.5 million building features 16 classrooms, including one 70-seat classroom and three 50-seat classrooms, a 150-seat lecture hall, 3 computer labs, 24 faculty offices, 2 administrative office suites, and a conference room.*
- *Has launched two additional Masters Programs: Master of Science in School Counseling and Master of Education in Educational Leadership. In addition, Southeastern will launch a Master of Education in Teaching and Learning in spring of 2009, bringing the total to seven graduate programs.*
- *Continues improvements to its campus facilities. Since 1999, Southeastern has constructed 6 new buildings and remodeled 10. This accounts for 265,000 new square feet and 262,000 square feet that has been remodeled. 100% of all university-owned student housing is new or has been remodeled within the last 6 years. Southeastern's total campus size has increased to 87 acres.*
- *Since 2003, Southeastern athletics has appeared in 29 NCCAA II National Tournaments, captured 22 South region titles, and won 12 NCCAA II National Championships. In addition, 74 athletes have been named NCCAA All Americans. Southeastern is now a member of the National Association of Intercollegiate Athletes (NAIA) and the National Christian College Athletic Association (NCCAA).*

INSTITUTIONAL GOALS

1. To create and engender a community of authentic Christian faith conducive to successful living and learning. Every decision relative to this atmospheric commitment will be judged against the following core values:
 - a. Authentic Spirituality
Genuine devotion, rather than showmanship, sensuality, and self-centeredness inform our expressions of worship, especially in public.
 - b. A Faith-infused World View
Though certainly not claiming an artificial unanimity on all social and political issues, there is a God-centeredness at the heart of our world views.
 - c. Character Development for Ethics in Life
Our Biblical value system and world view must find expression in a truly Christian ethic. That ethical system must be celebrated in relationships, business, and decision making in all of life. Ethics as a belief system must also find the character to be acted upon.
 - d. A Family-oriented Community of Servants
Servanthood in leadership as well as relationship means practical kindness in the example of Christ. We do not believe it possible to fully serve God without serving humanity. We likewise believe it is not possible to fully serve humanity without serving the family of God in this place.
 - e. Professional and Academic Excellence
Our God is a God who “doeth all things well.” “Good enough for church work” is a repugnant phrase to us. Here at SEU and in the professions and ministries to follow, we hold excellence as being consistent with who God is.
 - f. Culturally Literate and Sensitive
If we are committed to serve God and the world in the genuine love of Christ, we must understand the world and its true needs. Sensitivity to the spirits of those around Him was at the heart of Christ's ministry. To understand and respond with sensitive love implies not compromise but compassion.
2. Preserve the evangelical and Pentecostal heritage and message of the Assemblies of God and provide positive direction for its future.

3. Provide a general education program which will equip students with quantitative, verbal, and technological skills; enhance their appreciation of their cultural and religious heritage; strengthen their commitment to the liberal arts; and give them a view of their responsibility as Christian scholars in the community and the wider world.
4. Provide sufficient religious education to enable students to be conversant in the Christian faith, to articulate their own beliefs, and to actualize their faith through consistent growth and practice by the integration of faith in all aspects of life.
5. Provide undergraduate programs of sufficient quality to prepare students for success in graduate and professional school and in the early stages of their careers.
6. Provide graduate programs in various areas which will prepare students for success in post-graduate programs.
7. Achieve the quality of instruction and resources necessary for the national accreditation of selected areas and the development of the additional graduate programs where appropriate.
8. Provide academic support through computer facilities, library resources, student support services and faculty development opportunities to ensure quality instruction and a challenging academic environment.
9. Prepare students for citizenship as Christians in the world through reflective community interactions and teach commitment to ideals of service, benevolence, civic virtue and social justice.
10. Increase the diversity of the faculty and student body, address the unique needs of a diverse campus population, and encourage academic inquiry into minority concerns.
11. Recruit, develop and retain a diverse community of teaching professionals, administrators and support staff who demonstrate excellence in their professional roles and effectively implement the mission of the university in their lifestyles and co-curricular involvement.
12. Continue the growth of the student enrollment and development of the capital assets to optimize student opportunities.
13. Provide quality academic, spiritual, cultural and recreational services to its various publics.





ACADEMIC PROGRAMS

Undergraduate Programs

College of Arts & Sciences

Department of Behavioral and Social Sciences

Majors:

History
Human Services
Psychology
Social Work

Minors:

Christian Counseling
History
Psychology
Social Services
Sociology
Special Education/Disabled Populations

Department of Communication

Majors:

Broadcasting
Communication
Film Studies
Journalism/Public Relations
Theatre

Minors:

Communication
Theatre
Web Applications and Development

Department of English and Foreign Languages

Majors:

English
English and Intercultural Studies

Minors:

English
Greek
Spanish

Department of Music

Majors:

Church Music
Music
Music Education
Music Performance

Minors:

Church Music
Music
Music Technology

Department of Natural Sciences and Mathematics

Majors:

Biology/Pre-Med
General Biology
Mathematics

Minors:

Chemistry
Mathematics

College of Business and Legal Studies

Majors:

Accounting
Criminal Justice
Finance
International Business
Leadership
Management
Management Information Systems
Marketing
Sport and Recreation Management

Minors:

Business
Criminal Justice
Pre-Law

College of Christian Ministries and Religion

Majors:

Church Ministries
Interdisciplinary Studies
Practical Theology

Minors:

Bible
Children's Ministry
Leadership
Missions
Pastoral Ministry
Pre-Seminary Studies
Youth Ministry

College of Education

Majors:

Elementary Education (K-6)
Middle Grades English
Middle Grades General Science
Middle Grades Mathematics
Middle Grades Social Sciences
Music Education
Secondary Biology
Secondary English
Secondary Mathematics
Secondary Social Sciences

Minors:

Athletic Coaching
Elementary Education
Middle Grades Education
Physical Education
Secondary Education

ACADEMIC PROGRAMS (CONTINUED)

Graduate Programs

College of Business and Legal Studies

Master of Business Administration

College of Christian Ministries and Religion

Master of Arts in Ministerial Leadership

College of Education

Master of Education in Elementary Education
Master of Education in Educational Leadership

Department of Behavioral and Social Sciences

Master of Science in Professional Counseling
Master of Science in School Counseling

Online Programs

Master of Arts in Ministerial Leadership
Master of Business Administration
Master of Education in Teaching and Learning (Begins Spring 2009)
B.A. in Criminal Justice
B.S. in Management
B.S. in Marketing
B.S. in Practical Theology
B.S. in Human Services

Other Programs

ARMY ROTC – In conjunction with Florida Southern College
The Academy – Leading to Certification, Licensure, and Ordination in the Assemblies of God
Alternative Certification Program – Teaching Certification (summer program)

ATHLETICS

Southeastern University is a member of the National Association of Intercollegiate Athletes (NAIA) and the National Christian College Athletic Association (NCCAA)

Varsity Sports

Women's

Basketball • Cheerleading • Soccer • Tennis • Volleyball

Men's

Baseball • Basketball • Cheerleading • Golf • Soccer

Intramural Sports

Basketball • Dodgeball • Flag Football • Powder Puff Football
Soccer • Softball • Ultimate Frisbee • Volleyball • X-Box Tournament

CLUBS AND ORGANIZATIONS

Alpha Chi

American Association of Christian Counselors

Circle K

CMENC

College Republicans

Crossfire Quiz Bowl

Dean's Honor

Florida Public Relations Association

FX

Habitat for Humanity

International Justice Mission

Intramural Sports Staff

I-Tech Club

Kappa Delta Pi

Mi Hente

Mu Kappa

Ner Tamid

Phi Alpha Honor Society

Pop-up Players

Psi Chi

RAW TV

Sigma Beta Delta

Sigma Chi Pi

Social Work Club

Soul Food

Student Christian Medical & Dental Association

Student Missions Organization

Students in Free Enterprise

The Southeastern Times Staff

The Torch Staff

Unplanned Improv

LEADERSHIP POSITIONS

Athletic Leadership Institute

Chapel Assistants

Commuter Assistant

Community Leader

Department of Spiritual Formation Student Leaders

FIRST Teams Leader & Mentoring program

Resident Assistant

Southeastern Singers

Student Body Leadership Council

2008-2009 Tuition and Fees

Undergraduate

Tuition	Semester	Year
Less than 12 hours	\$540/hour	\$540/hour
12-13 hours	\$6,480	\$12,960
14-17 hours	\$6,980	\$13,960
More than 17 hours	\$6,980 plus \$411 for each additional hour above 17 hours	\$13,960 plus \$411 for each additional hour above 17 hours
General Student Fee	\$255	\$510
<hr/>		
Total for Off-Campus*	\$7,235	\$14,470
Residence Halls		
South Pointe & Valencia	\$1,680	\$3,360
Bauer, Bethany & Mira Lago	\$1,710	\$3,420
Aventura, Destino & Esperanza	\$1,890	\$3,780
Other Housing	\$2,014, or \$2,124, or \$2,344	\$4,028, or \$4,248, or \$4,688
Meals Plans		
Carte Blanche Meal Plan	\$1,831.84	\$3,663.68
20-Meal Plan	\$1,789.82	\$3,579.64
14-Meal Plan	\$1,734.57	\$3,469.14
10-Meal Plan	\$1,695.37	\$3,390.74
Commuter Meal Plan	\$583.15	\$1,166.30
Room and Meal Plan*	\$3,500	\$7,000
<hr/>		
Total for On-Campus*	\$10,735	\$21,470
<i>*Based on 14-17 Hrs, 20-meal plan, and Bethany or Bauer Halls occupancy</i>		
Other Estimated Expenses		
Books and supplies	\$450	\$900
Misc. (transportation, laundry, entertainment, ect...)	\$1,100	\$2,200

2008-2009 Tuition and Fees

Graduate

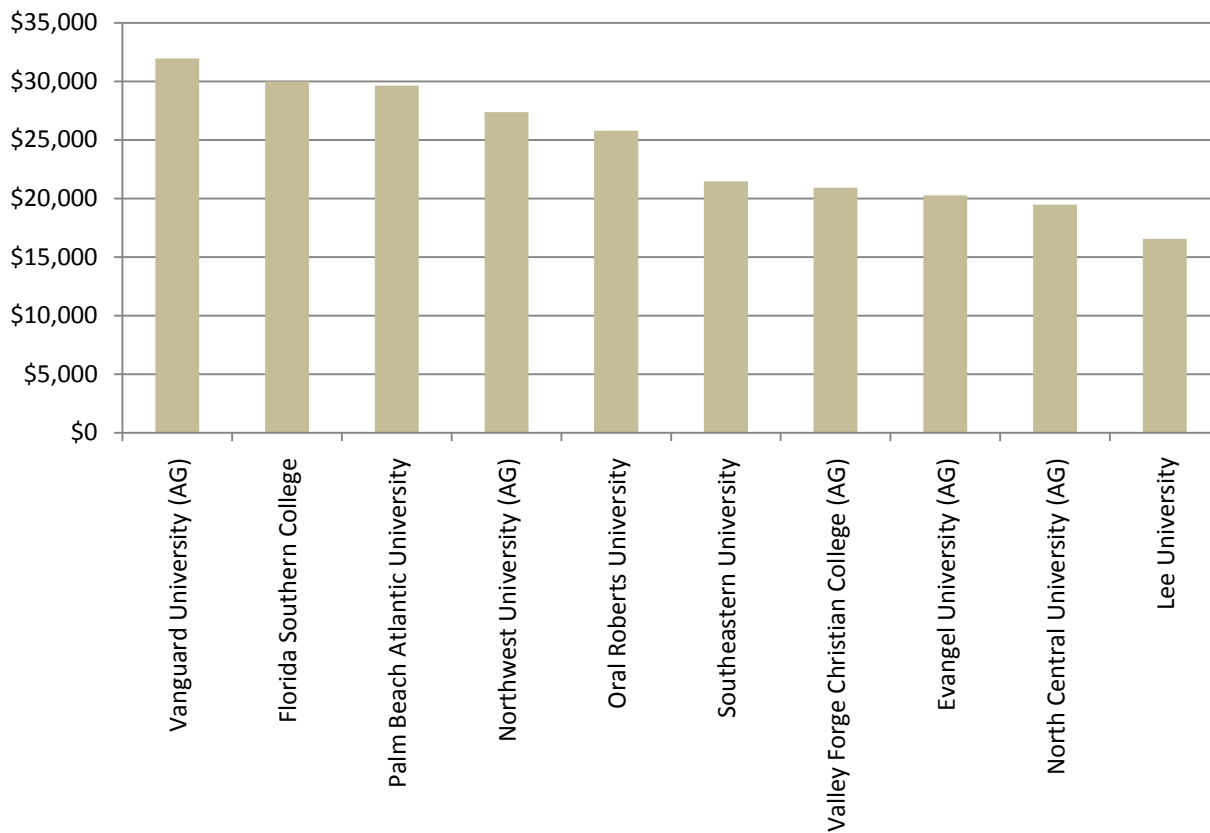
Program	Tuition	Credit Hours
Master of Business Administration	\$425/hour	36
Master of Education in Educational Leadership	\$250/hour	36
Master of Education in Elementary Education	\$250/hour	33
Master of Science in Professional Counseling	\$425/hour	60
Master of Science in School Counseling	\$425/hour	60
Master of Arts in Ministerial Leadership	\$450/hour	36
Master of Arts in Ministerial Leadership-Executive Track (2009)	\$450/hour	36
Average Graduate Tuition Per Hour	\$379/hour	
Average Annual General Student Fee	\$260	
Average Annual Cost Per Program	\$9,346	
Average Tuition to Complete Graduate Program	\$16,436	

2008-2009 Tuition/Room & Board

Southeastern University compared to other schools

School	Annual Tuition/Room&Board
Vanguard University (AG)	\$31,978
Florida Southern College	\$29,995
Palm Beach Atlantic University	\$29,658
Northwest University (AG)	\$27,368
Oral Roberts University	\$25,806
* Southeastern University	\$21,470
Valley Forge Christian College (AG)	\$20,930
Evangel University (AG)	\$20,270
North Central University (AG)	\$19,476
Lee University	\$16,564
Southwestern Assemblies of God University	\$16,236

Annual Tuition/Room & Board Costs



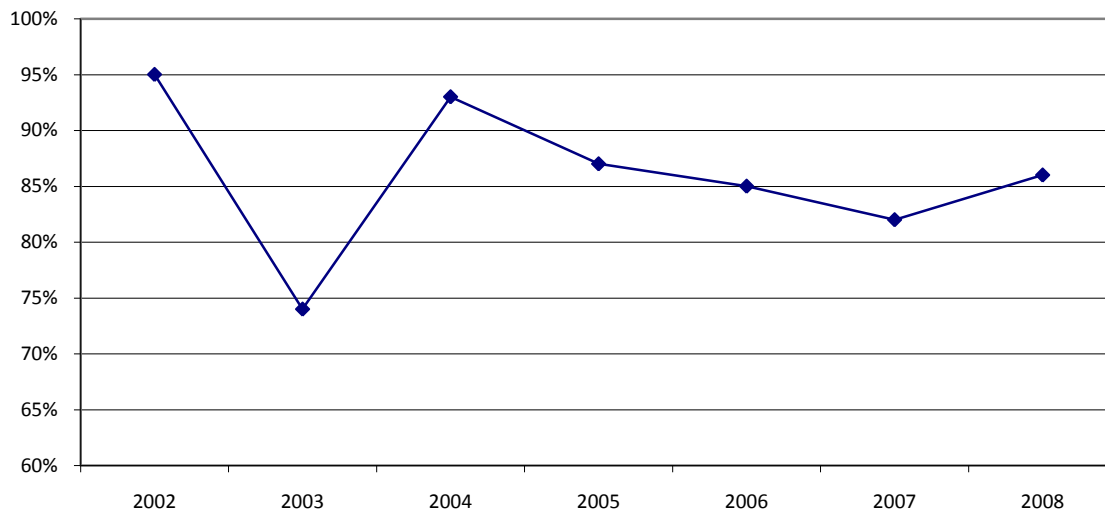
****Southeastern's tuition ranks 92nd out of the 101 CCCU Schools***

Financial Aid – First-Time Freshmen

Fall 2001 – Fall 2008

	2002	2003	2004	2005	2006	2007	2008
% Receiving any Financial Aid	95%	74%	93%	87%	85%	82%	86%
% Receiving Federal Grants	35%	25%	32%	26%	24%	25%	30%
Average amount of Federal Grants	\$2,998	\$2,859	\$2,834	\$2,905	\$2,977	\$4,381	\$5,177
% Receiving State/Local Grants	48%	38%	50%	52%	47%	51%	50%
Average amount of State/Local Grants	\$3,577	\$3,525	\$3,611	\$4,219	\$4,464	\$5,352	\$5,416
% Receiving Institutional Grants	54%	46%	57%	52%	59%	57%	66%
Average amount of Institutional Grants	\$1,932	\$2,234	\$2,223	\$2,001	\$2,225	\$3,200	\$4,165
% Receiving Student Loans	87%	69%	86%	72%	77%	65%	69%
Average amount of Student Loans	\$2,841	\$3,010	\$2,528	\$6,870	\$6,220	\$12,946	\$13,995

% of Students Receiving Financial Aid



Enrollment

Fall 1999-Fall 2008 Graduate and Undergraduate

Undergraduate

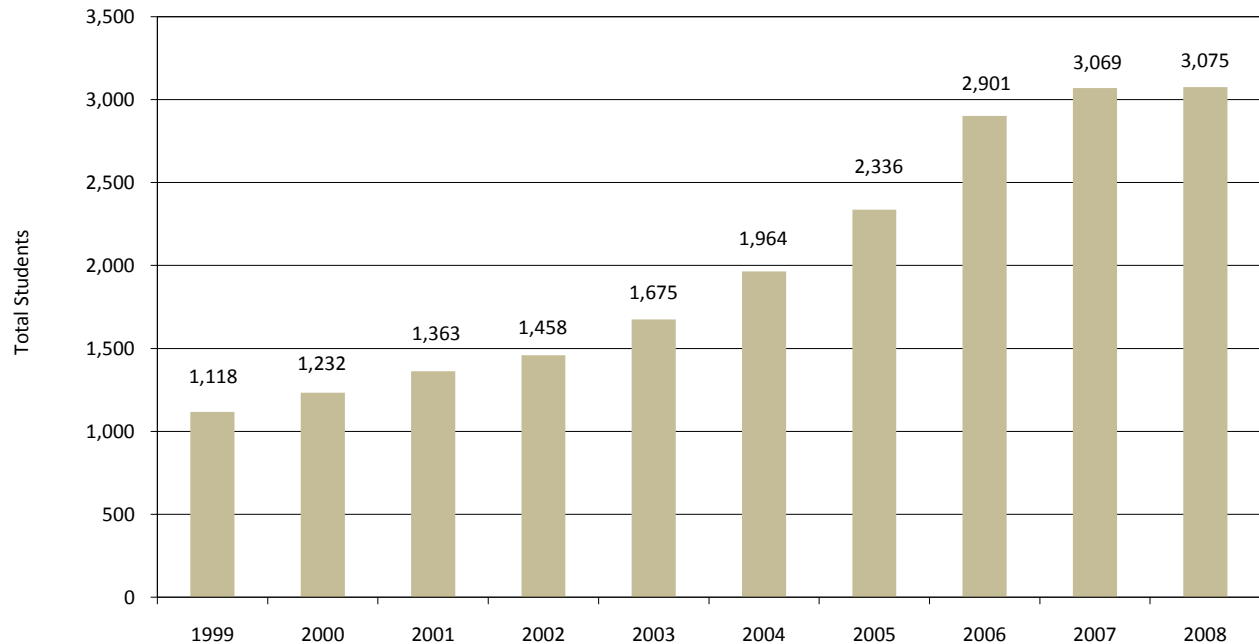
1999	2000	2001	2002	2003	2004	2005	2006	2007	2008
1,118	1,232	1,363	1,458	1,675	1,964	2,297	2,810	2,931	2,867

Graduate

	2005	2006	2007	2008
Master of Arts in Ministerial Leadership (M.A.)	39	59	54	64
Master of Business Administration (M.B.A.)		32	52	60
Master of Science in Professional Counseling (M.S.)			12	19
Master of Science in School Counseling (M.S.)				3
Master of Education in Educational Leadership (M.Ed.)				14
Master of Education in Elementary Education (M.Ed.)			6	24
Non-Degree Seeking			14	24
	39	91	138	208

Total Students

1999	2000	2001	2002	2003	2004	2005	2006	2007	2008
1,118	1,232	1,363	1,458	1,675	1,964	2,336	2,901	3,069	3,075



Enrollment – Full-Time Equivalency

Fall 1999-Fall 2008 Graduate and Undergraduate

Undergraduate

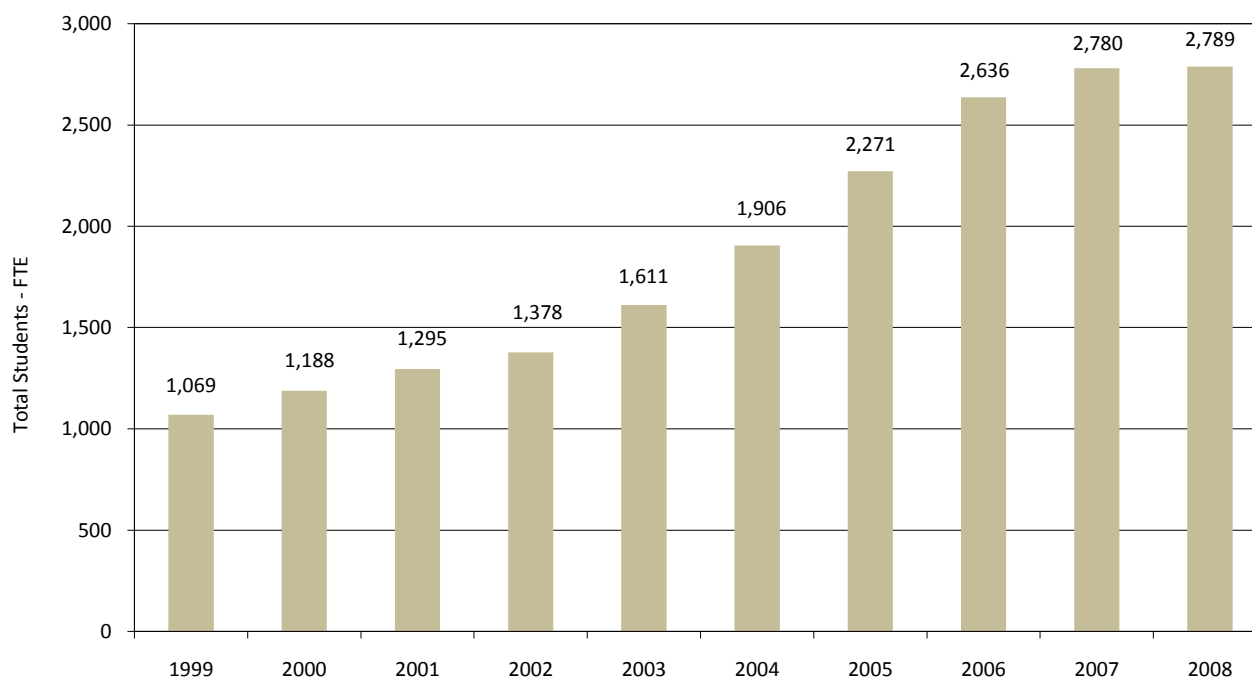
1999	2000	2001	2002	2003	2004	2005	2006	2007	2008
1,069	1,188	1,295	1,378	1,611	1,906	2,225	2,551	2,664	2,618

Graduate

2005	2006	2007	2008
46	86	116	171

Total Students

1999	2000	2001	2002	2003	2004	2005	2006	2007	2008
1,069	1,188	1,295	1,378	1,611	1,906	2,271	2,636	2,780	2,789



**FTE – 12 part-time hours equal one full-time equivalent student*

Number of Majors by Program

Fall 2008 Total Enrollment

College of Arts & Sciences

College of Arts & Sciences Enrollment: 785

Department of Behavioral & Social Sciences

Psychology (BA)	40
Psychology (BS)	96
History (BA)	16
Human Services	172
Social Work	48
Department Total	372

Department of Communication

Broadcasting (BA)	13
Broadcasting (BS)	36
Communication (BA)	17
Communication (BS)	38
Film Studies	20
Journalism/PR (BA)	10
Journalism/PR (BS)	33
Theatre (BA)	12
Theatre (BS)	9
Department Total	188

Department of English & Foreign Language

English (BA)	33
English & Intercultural Studies	25
Department Total	58

Department of Music

Music Performance	3
Music Performance (Piano)	2
Music Performance (Voice)	3
Church Music (BS)	29
Music (BA)	14
Music Education (BS)	28
Department Total	79

Department of Natural Sciences & Mathematics

General Biology	16
Biology/Pre-Med	60
Mathematics	12
Department Total	88

College of Business & Legal Studies

College of Business & Legal Studies Enrollment: 469

Accounting (BS)	26	Business and Professional Leadership	138
Criminal Justice (BA)	14	Management (BS)	100
Criminal Justice (BS)	25	Marketing (BS)	45
Management Information Systems	17	Sports & Recreation Management	34
Finance (BS)	26	International Business (BS)	28
Business Leadership (BS)	8	Pre-Business	8

College of Education

College of Education Enrollment: 231

Early Childhood Education (AA)	3	Middle Grades Social Science	1
Elementary Education (K-6)	145	Secondary Biology (BS)	5
Educational Student Education	16	Secondary English (BS)	25
Middle Grades English	1	Secondary Mathematics (BS)	8
Middle Grades General Science	1	Secondary Social Sciences (BS)	21
Middle Grades Mathematics	5		

Number of Majors by Program

Fall 2008 Total Enrollment

College of Christian Ministries & Religion

College of Christian Ministries & Religion Enrollment: 374

Church Leadership	89	Pastoral Ministry	2
Church Ministries (BS)	98	Practical Theology (Ministry Arts)	9
Interdisciplinary Studies (BA)	45	Practical Theology (BS)	129
Missions	2		

Other

Graduate Studies	208
The Academy	202
Undeclared	754
Traditional Non-Degree	22
Dual Enrolled	18
COTC*	12

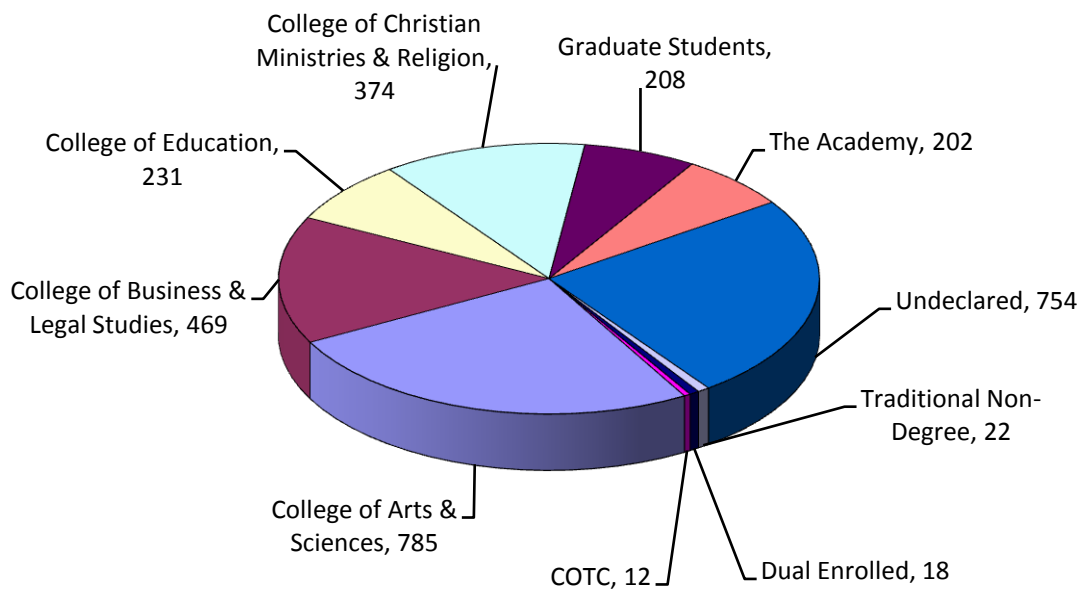
Totals

College of Arts & Sciences	785
College of Business & Legal Studies	469
College of Education	231
College of Christian Ministries & Religion	374
Graduate Studies	208
The Academy	202
Undeclared	754
Traditional Non-Degree	22
Dual Enrolled	18
COTC	12
Total University Enrollment	3,075

**Cathedral of the Cross*

Majors by Program

Fall 2008 Total Enrollment



Enrollment by Gender

Fall 1999-Fall 2008 Graduate and Undergraduate

Undergraduate

	1999	2000	2001	2002	2003	2004	2005	2006	2007	2008
Male	428	580	653	638	782	882	994	1,199	1,234	1,208
Female	496	652	710	768	893	1,081	1,290	1,611	1,697	1,659

Graduate

	2005	2006	2007	2008
Male	31	77	80	118
Female	8	14	58	90

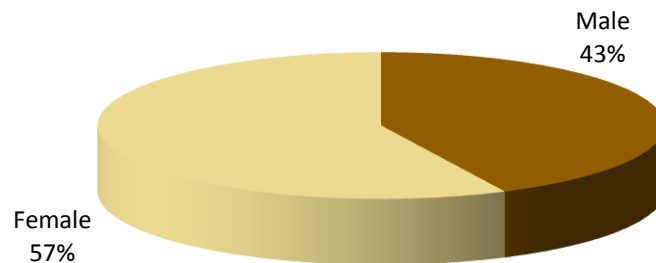
Total Students

	1999	2000	2001	2002	2003	2004	2005	2006	2007	2008
Male	428	580	653	638	782	882	1,025	1,276	1,314	1,326
Female	496	652	710	768	893	1,081	1,298	1,625	1,755	1,749

Percentage of Total Students

	1999	2000	2001	2002	2003	2004	2005	2006	2007	2008
Male	46%	47%	48%	45%	47%	45%	44%	44%	42%	43%
Female	54%	53%	52%	55%	53%	55%	56%	56%	58%	57%

Fall 2008 Total Enrollment = 3,075



Enrollment by State of Residence

Fall 2008

State	Number of Students	State	Number of Students
Alabama	41	Nebraska	2
Alaska	4	Nevada	1
Arizona	9	New Hampshire	9
Arkansas	6	New Jersey	41
California	16	New Mexico	1
Colorado	13	New York	59
Connecticut	25	North Carolina	106
Delaware	8	North Dakota	1
District of Columbia	1	Ohio	78
Florida	1,945	Oklahoma	2
Georgia	103	Oregon	5
Hawaii	2	Pennsylvania	82
Idaho	0	Rhode Island	4
Illinois	58	South Carolina	54
Indiana	21	South Dakota	0
Iowa	7	Tennessee	22
Kansas	9	Texas	23
Kentucky	5	Utah	1
Louisiana	4	Vermont	4
Maine	4	Virginia	52
Maryland	34	Washington	3
Massachusetts	21	West Virginia	13
Michigan	41	Wisconsin	17
Minnesota	12	Wyoming	0
Mississippi	6		
Missouri	10		
Montana	3		

Number of Students by State of Residence Fall 2008



Alaska – 4
Hawaii – 2

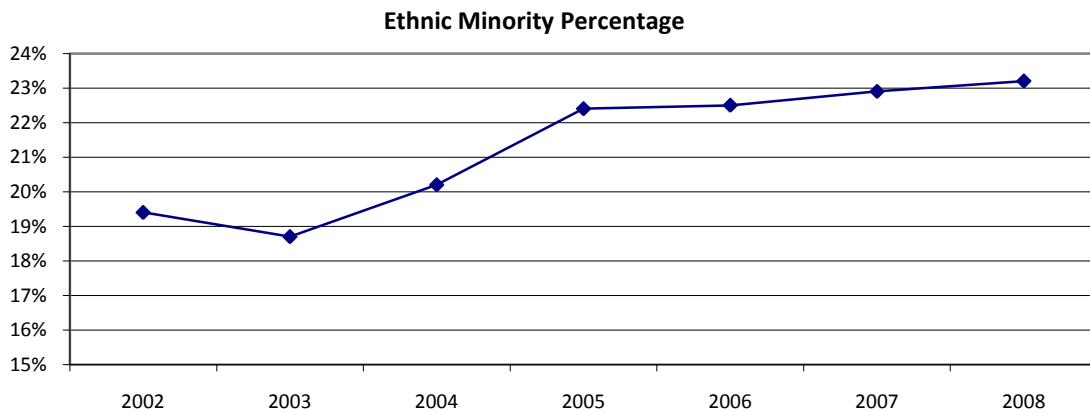
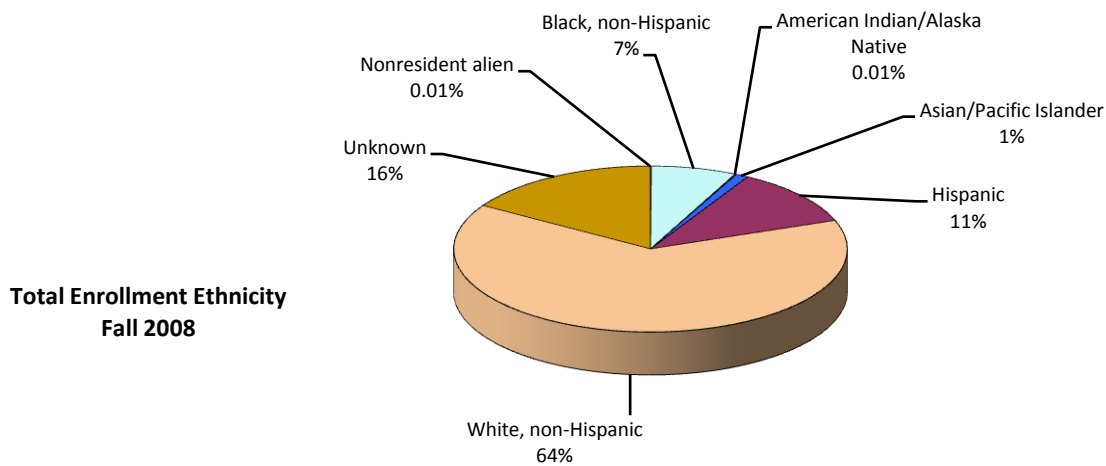
*Of the 2,988 students from the United States,
65% are from Florida
35% are from outside of Florida

Enrollment by Racial/Ethnic Group

Fall 2002-Fall 2008 Total Enrollment

Racial/Ethnic Group	2002	2003	2004	2005	2006	2007	2008
Nonresident Alien	8	14	7	5	3	3	2
Black, non-Hispanic	87	101	116	163	198	203	216
American Indian/Alaska Native	10	9	8	10	7	6	3
Asian/Pacific Islander	21	22	35	35	35	33	32
Hispanic	143	146	207	280	310	331	344
White, non-Hispanic	1,115	1,288	1,472	1,707	1,902	1,940	1,979
Race/Ethnicity unknown	74	95	119	136	446	553	499
Total	1,458	1,675	1,964	2,336	2,901	3,069	3,075
Ethnic Minority Percentage	19.4%	18.7%	20.2%	22.4%	22.5%	22.9%	23.2%

**Ethnicity Unknown not included in Minority Percentage calculations*



Enrollment – International Students/Nations

Fall 2008

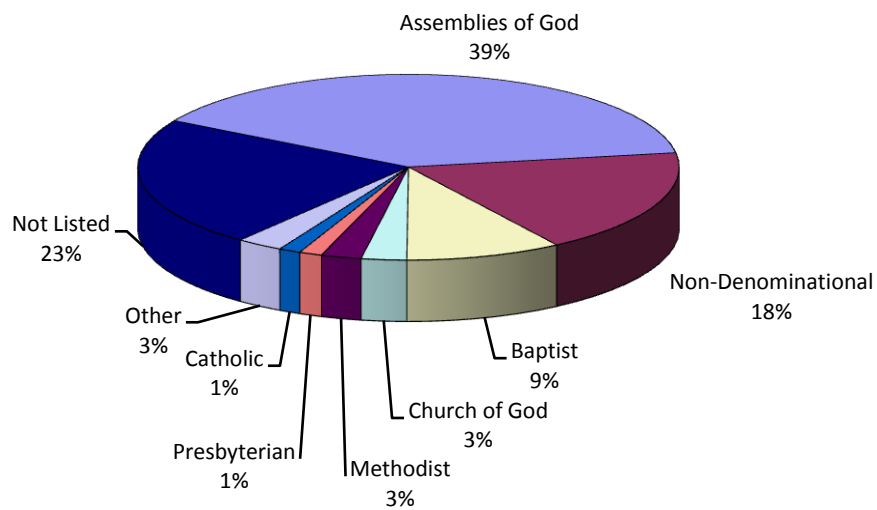
World Area	Number of Students
Angola	1
Australia	1
Bahamas	14
Belgium	1
Bermuda	2
Brazil	6
Cambodia	1
Canada	16
Chile	1
China	1
Colombia	5
Cuba	1
Czechoslovakia	1
Dominican Republic	1
Ecuador	5
Ethiopia	3
Germany	2
Great Britain (UK)	3
Guatemala	3
Guyana	1
Haiti	9
India	4
Israel	1
Jamaica	2
Korea (North)	1
Korea (South)	1
Liberia	1
Mexico	1
Moldova	1
Netherlands	1
Netherlands Antilles	2
Nicaragua	1
Peru	2
Puerto Rico	5
South Africa	2
Sweden	1
Trinidad and Tobago	1
Ukraine	1
United Arab Emirates	1
Total International Students	107
Percent of Total Enrollment	3.48%

**International students represent 39 countries*

Enrollment by Denomination

Fall 2008

Religion	Number of Students	Percentage of Students
Assemblies of God	1,206	39%
Non-Denominational	561	18%
Baptist	286	9%
Church of God	83	3%
Methodist	74	2%
Presbyterian	42	1%
Catholic	40	1%
Other	85	3%
Not Listed	698	23%

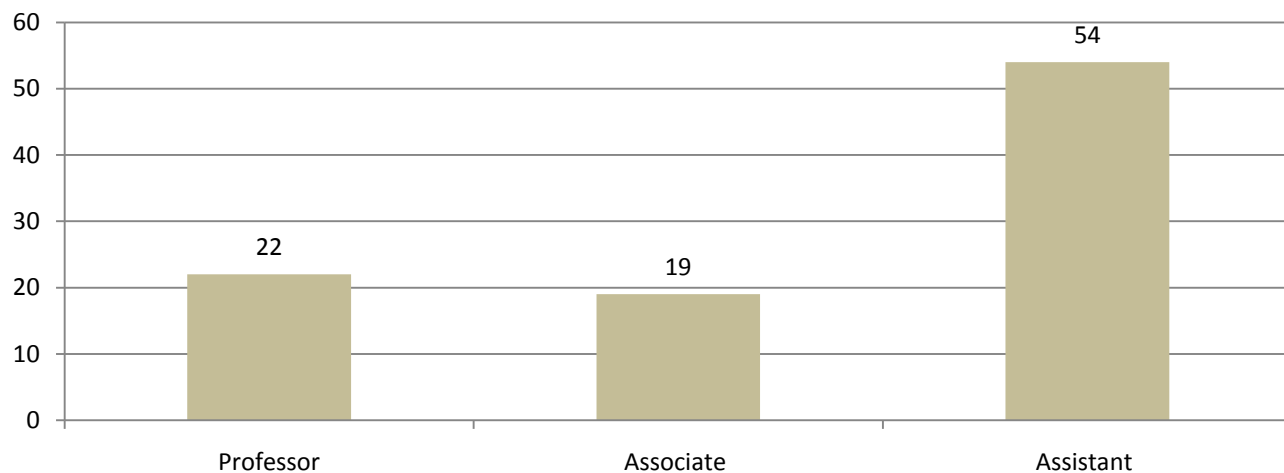


Faculty Roster – Division and Ranks

Fall 2008

Division	M.I.R.	Professor	Associate Professor	Assistant Professor	Total
College of Arts & Sciences					
Behavioral and Social Sciences		2	5	3	10
Communication		0	2	4	6
English and Foreign Languages		1	1	7	9
Music		2	2	6	10
Natural Sciences and Mathematics		2	1	6	9
College of Business and Legal Studies		2	2	8	12
College of Christian Ministries and Religion	1	4	3	6	14
College of Education		1	1	7	9
Library/Deans/Administration		7	2	7	16
Southeastern University	1	22	19	54	95
Percentage	1%	22%	20%	57%	100%
Faculty with Terminal Degrees					53
Percentage with Terminal Degrees					56%

Faculty by Rank



Student to Faculty Ratio*

1999	2000	2001	2002	2003	2004	2005	2006	2007	2008
19.9:1	25.1:1	22.3:1	21.4:1	24.8:1	23.7:1	24.9:1	23.1:1	23.8:1	22.0:1

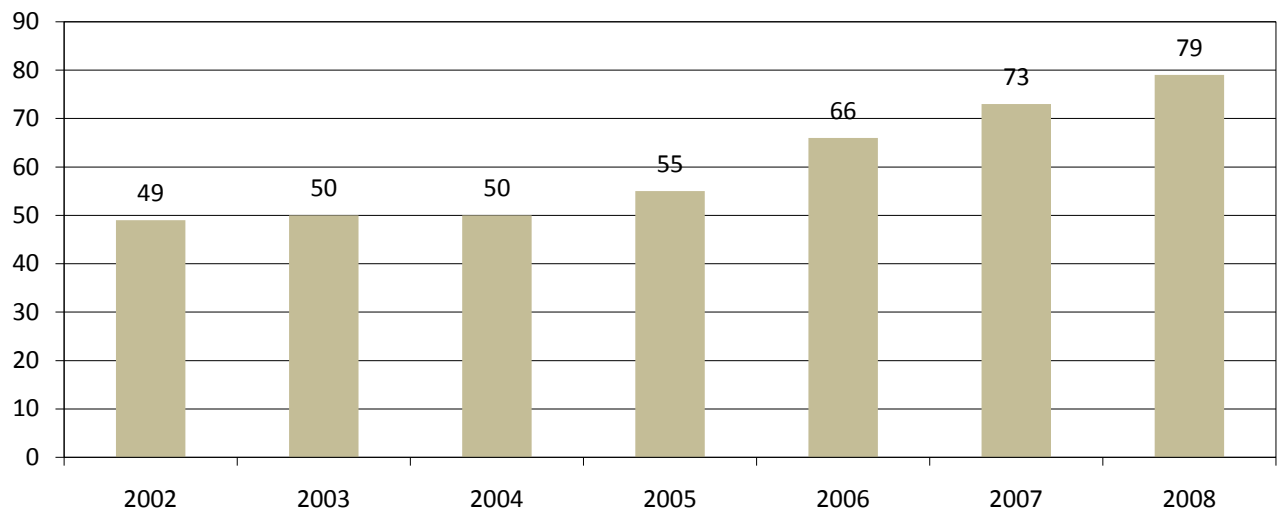
*Student FTE to Faculty FTE

Full-Time Instructional Faculty

Fall 2002-2008

Department/College	2002	2003	2004	2005	2006	2007	2008
College of Arts & Sciences							
Behavioral and Social Sciences	7	5	5	6	9	9	10
Communication	n/a	n/a	n/a	5	5	6	6
English and Foreign Languages	n/a	n/a	n/a	7	8	9	9
Language and Communication Arts	10	10	12	n/a	n/a	n/a	n/a
Music	6	7	7	7	10	10	10
Natural Sciences and Mathematics	5	6	6	7	9	10	9
College of Business and Legal Studies	6	7	6	8	10	11	12
College of Christian Ministries and Religion	9	9	9	9	9	11	14
College of Education	6	6	5	6	6	7	9
Total Full-Time Instructional Faculty	49	50	50	55	66	73	79
Instructional Faculty with Terminal Degrees	27	28	26	31	42	44	44
Percentage with Terminal Degrees	55%	56%	52%	56%	64%	60%	56%

Total Full-Time Instructional Faculty



Faculty/Staff/Administration

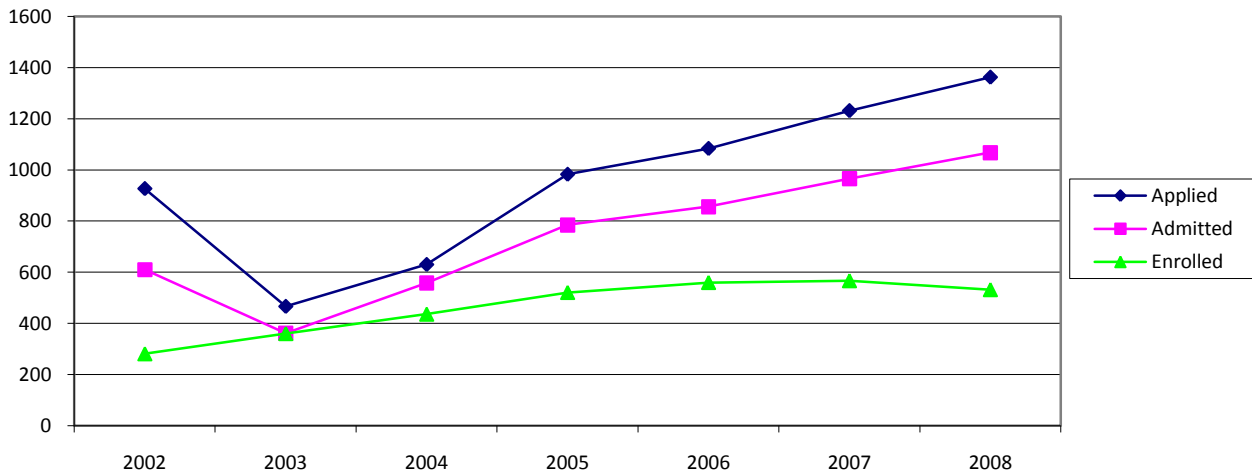
Fall 2008

Instructional Faculty	79
Library/Administration/Deans	16
Full-Time Staff	229
<i>Secretarial/Clerical</i>	67
<i>Technical/Paraprofessional</i>	6
<i>Service/Maintenance</i>	44
<i>Skilled Craft</i>	12
<i>Professional Non-Faculty</i>	71
<i>Executive/Administrative/Managerial</i>	29
Full-Time Employees	324
Adjunct Faculty	85
Part-Time Employees	30
Total Employees	439

Applications for Admissions/First-time Freshmen

Fall 2002 – Fall 2008

		Applied	Admitted	%Admitted	Enrolled	% Admitted that Enrolled
2002	Female	500	329	66%	148	45%
	Male	427	281	66%	133	47%
	Total	927	610	66%	281	46%
2003	Female	266	201	76%	201	100%
	Male	200	160	80%	159	99%
	Total	466	361	77%	360	99%
2004	Female	380	335	88%	257	77%
	Male	250	223	89%	179	80%
	Total	630	558	89%	436	78%
2005	Female	600	488	81%	321	66%
	Male	383	297	78%	200	67%
	Total	983	785	80%	521	66%
2006	Female	651	515	79%	321	62%
	Male	433	341	79%	239	70%
	Total	1,084	856	79%	560	65%
2007	Female	731	603	82%	333	55%
	Male	501	363	72%	234	64%
	Total	1,232	966	78%	567	59%
2008	Female	809	667	82%	325	47%
	Male	554	401	72%	207	51%
	Total	1,363	1068	78%	532	50%



Entering Freshmen – Combined SAT and ACT Scores

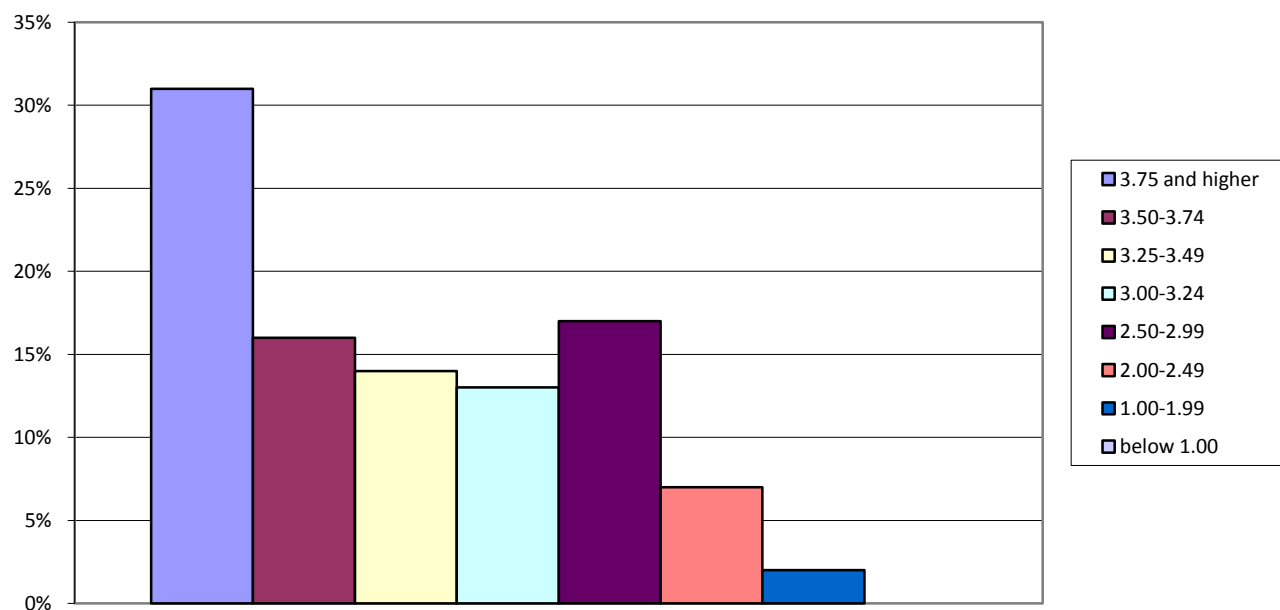
Fall 2008

	SAT Critical Reading	SAT Math	SAT Critical Writing	ACT Composite
25 th Percentile	440	430	430	18
75 th Percentile	560	570	560	24
Average ACT Score	21			
Average SAT Score	1600			

GPA Scores

Percent who had GPA of 3.75 and higher	31%
Percent who had GPA between 3.50 and 3.74	16%
Percent who had GPA between 3.25 and 3.49	14%
Percent who had GPA between 3.00 and 3.24	13%
Percent who had GPA between 2.50 and 2.99	17%
Percent who had GPA between 2.00 and 2.49	7%
Percent who had GPA between 1.00 and 1.99	2%
Percent who had GPA below 1.00	0%

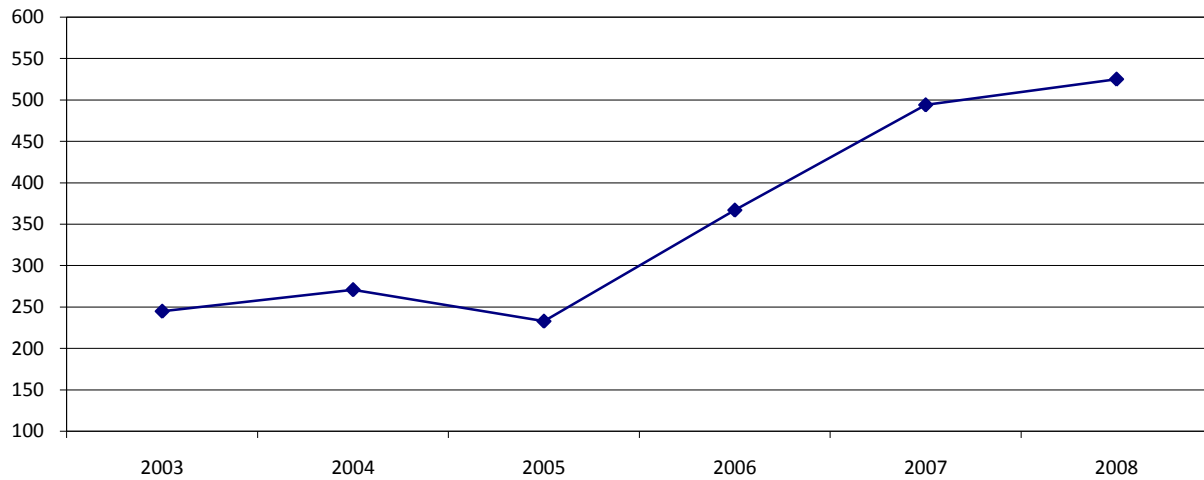
Average high school GPA score of entering Freshmen 3.37



Completions

2003 – 2008

	2003	2004	2005	2006	2007	2008
Female	139	136	128	208	265	303
Male	106	135	105	159	229	222
Total	245	271	233	367	494	525



Degrees Conferred July 1st 2007 – June 30th, 2008

	Bachelor's	Master's	All Degrees
By Gender			
Female	292	11	303
Male	200	22	222
By Race/Ethnicity			
White, Non-Hispanic	371	28	377
Hispanic	57	2	48
Black, Non-Hispanic	27	2	31
Asian/Pacific Islander	7	0	10
American Indian/Alaskan Native	1	0	1
Nonresident Alien	2	0	1
Undesignated	27	1	26
Grand Total	492	33	525

Completions

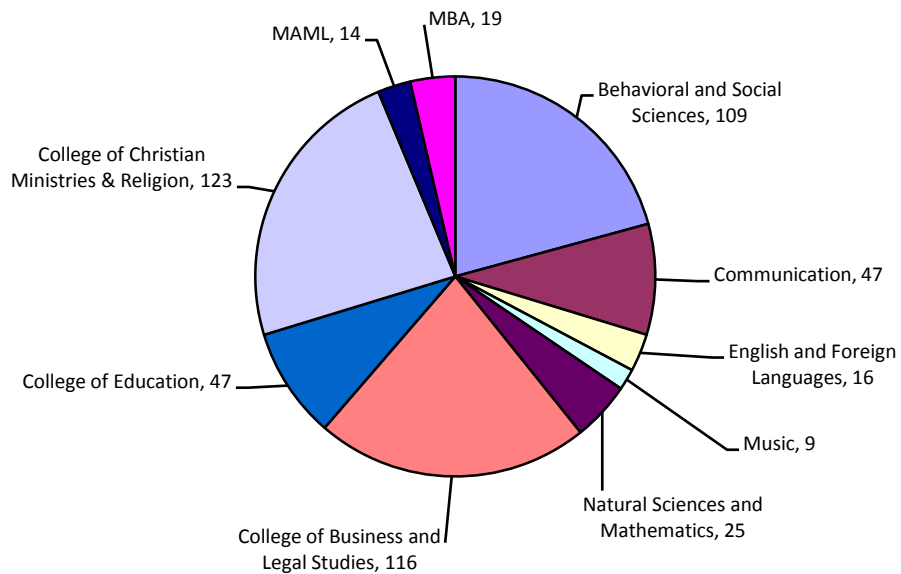
July 1st, 2007 – June 30th, 2008

Undergraduate Degrees Conferred by Disciplinary Areas

College of Arts & Sciences		
Behavioral and Social Sciences	109	21%
Communication	47	9%
English and Foreign Languages	16	3%
Music	9	2%
Natural Sciences and Mathematics	25	5%
College of Business and Legal Studies	116	22%
College of Education	47	9%
College of Christian Ministries & Religion	123	23%
Total	492	94%

Graduate Degrees Conferred by Disciplinary Areas

MAML	14	3%
MBA	19	3%
Total	33	6%



Retention and Graduation Rates

2003 – 2008

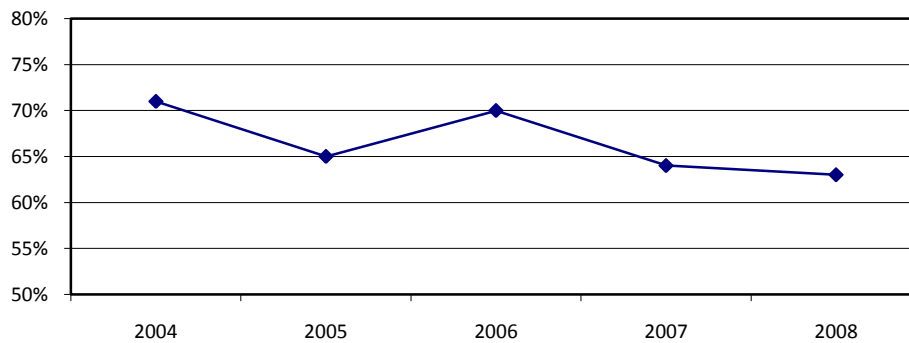
Retention Rates

Entering Freshman Cohort Year

2003
2004
2005
2006
2007

Percentage Returned Following Fall

71% 2004
65% 2005
70% 2006
64% 2007
63% 2008



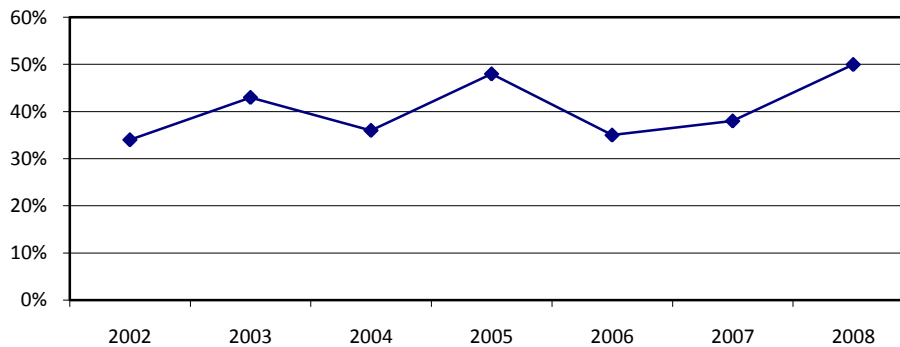
Graduation Rates

Entering Freshman Cohort Year

1996
1997
1998
1999
2000
2001
2002

Percentage Graduated Within Six Years

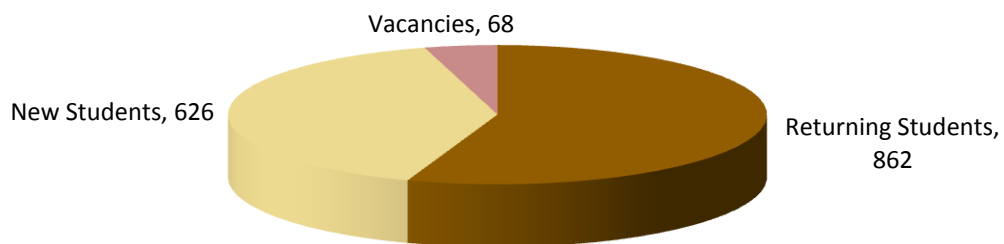
34% 2002
43% 2003
36% 2004
48% 2005
35% 2006
38% 2007
50% 2008



Residence Hall Housing

Fall 2008

Residence Hall	Capacity	Returning Students	New Students	Total	Vacancies
Bauer Hall	199	20	171	191	8
Destino Hall	256	216	40	256	0
Mira Lago	72	59	13	72	0
Valencia	72	32	35	67	5
Men's Total	599	327	259	586	13
Bethany Hall	180	38	138	176	4
South Pointe	139	56	70	126	13
Valencia	67	31	26	57	10
Esperanza	260	212	41	253	7
Buttercup					
Houses	55	44	3	47	8
Aventura Hall	256	154	89	243	13
Women's Total	957	535	367	902	55
Total	1,556	862	626	1,488	68

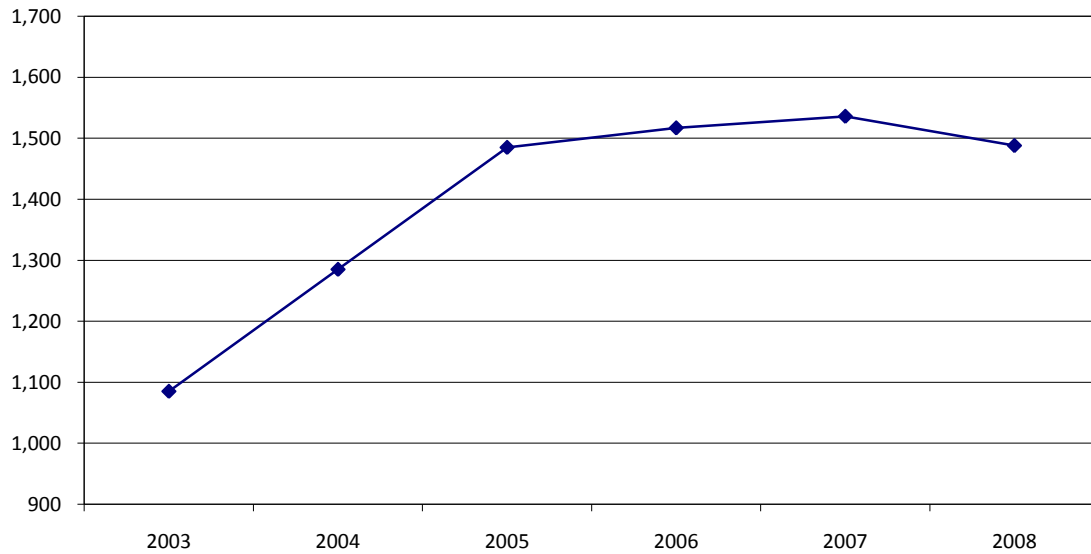


Housing Capacity

Fall 2003 – Fall 2008

Year	Residents	Growth	Capacity	Capacity %
2003	1,085	13.0%	1,121	96.8%
2004	1,285	18.4%	1,290	99.6%
2005	1,485	15.6%	1,495	99.3%
2006	1,517	2.2%	1,517	100.0%
2007	1,536	1.3%	1,551	99.0%
2008	1,488	-3.1%	1,556	95.6%

Number of Residents



Library Resources

Fall 2008

Library Holdings

Books	108,000
Periodical titles	828
Compact discs	2,417
Videos	3,437

Online Resources

Full-text books	32,000
Full-text periodicals	19,000
Online databases	54

Checkouts last year 56,976

Computer Resources

Total number of Computers available to all students 89

Expenditures by Function

2007 – 2008

Function	June 30th, 2007		June 30th, 2008	
Instructional	\$7,851,330	21.7%	\$8,339,907	19.6%
Academic Support	\$1,974,317	5.5%	\$1,718,949	4.0%
Student Services	\$7,201,238	19.9%	\$8,260,340	19.4%
Institutional Support	\$8,247,784	22.8%	\$8,699,202	20.4%
Operation of Plant	\$2,424,700	6.7%	\$9,267,928	21.7%
Auxiliary Operations	\$8,421,522	23.3%	\$6,334,289	14.9%
Total Expenditures	\$36,120,891	100%	\$42,620,615	100%

Source of Current Fund Revenues

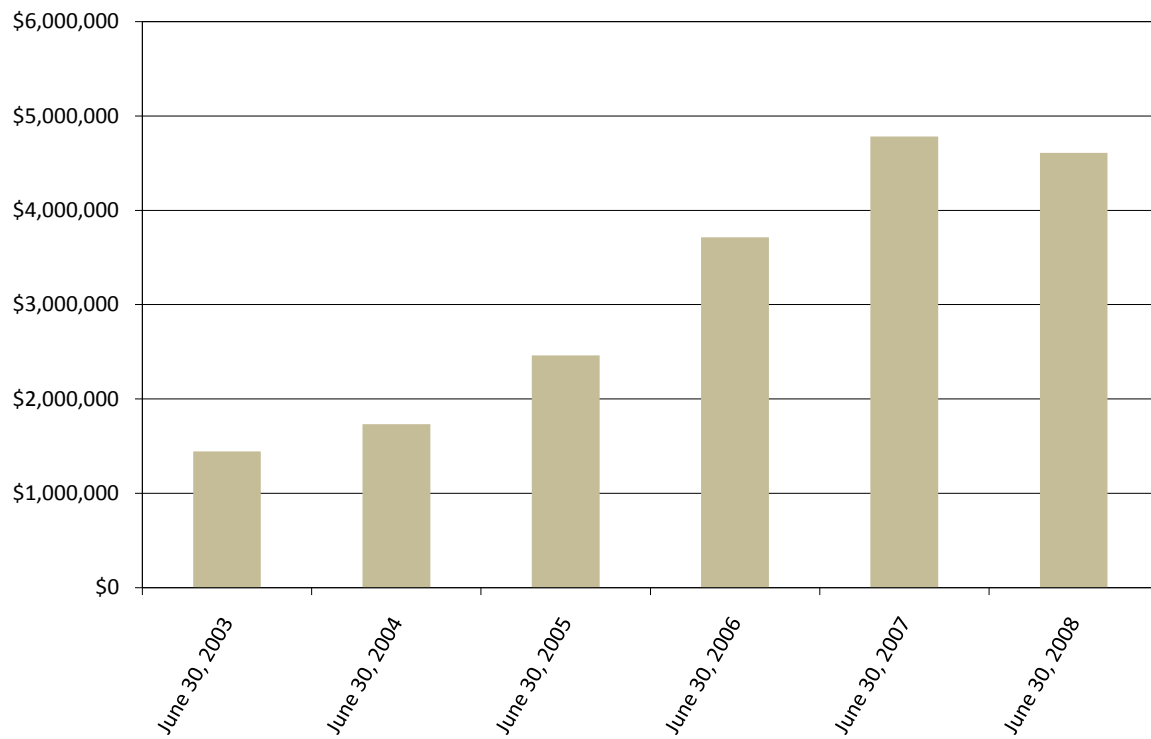
Source	June 30th, 2007		June 30th, 2008	
Tuition and Fees	\$29,488,315	69.7%	\$32,661,059	70.9%
Gifts & Bequests	\$2,011,849	4.8%	\$2,437,556	5.3%
Sales of Auxiliary Services	\$8,945,404	21.2%	\$9,896,273	21.5%
Other Sources	\$1,848,592	4.4%	\$1,073,239	2.3%
Total Fund Revenues	\$42,294,160	100%	\$46,068,127	100%

Endowment Funds

2003 – 2008

Endowment Funds	
June 30, 2003	\$1,445,240
June 30, 2004	\$1,734,125
June 30, 2005	\$2,461,653
June 30, 2006	\$3,712,780
June 30, 2007	\$4,781,271
June 30, 2008	\$4,608,111

Endowment Funds



Notes

Notes
