



SOUTHEASTERN
UNIVERSITY

2009 - 2010

FACT BOOK

Published in November 2009 by

Southeastern University
Office of Institutional Research & Retention
1000 Longfellow Blvd. Lakeland, FL 33801
Dr. Andrew H. Permenter, Dean
 ahpermenter@seuniversity.edu
Mr. Andrew E. Miller
 aemiller@seuniversity.edu
Mrs. Sharon L. Marquess
 slmarquess@seuniversity.edu

Copyright © 2009 Southeastern University

FACT BOOK 2009 – 2010

TABLE OF CONTENTS

Mission Statement/Board of Regents	1
Accreditation	3
History of Southeastern	5
Points of Excellence	7
Institutional Goals	8
Organizational Charts	10
Academic Programs	12
Athletics & Leadership Positions	14
Clubs and Organizations	15
Tuition and Fees	16
Tuition, Room & Board Comparison	18
Financial Aid – Entering Freshman	19
Enrollment	
<i>Total Enrollment</i>	20
<i>Total Enrollment FTE (Full-time Equivalent)</i>	21
<i>Enrollment by Major</i>	22
<i>Enrollment by Gender</i>	25
<i>Enrollment by State of Residence</i>	26
<i>Enrollment by Race/Ethnic Group</i>	27
<i>International Student Enrollment</i>	28
<i>Enrollment by Denomination</i>	29
<i>Enrollment by AG District</i>	30
Faculty & Staff	
<i>Faculty Roster – Division and Rank</i>	31
<i>Full-Time Instructional Faculty</i>	32
<i>Faculty/Staff/Administration</i>	33
Applications for Admissions – Entering Freshman	34
SAT, ACT, and GPA – Entering Freshmen	35
Completions	36
Retention and Graduation Rates	38
Housing	39
Library & Computer Resources	41
Revenue & Expenditures	42
Source of Current Revenues	42
Endowment Funds	43
Notes	44

MISSION STATEMENT

Southeastern, a dynamic, Christ-centered university, fosters student success by integrating personal faith and higher learning. Within our loving Pentecostal community, we challenge students to a lifetime of good work and of preparing professionally so they can creatively serve their generation in the Spirit of Christ.



BOARD OF REGENTS MEMBERS

Dr. Charles Kelly, Chairman

Reverend Terry Raburn, Vice Chairman

Reverend Steven Brown, Secretary

Mr. Gardner Altman, Jr.

Reverend Wayne Blackburn

Mrs. Mary Jo Bolin

Mr. David Burdine

Mrs. Jennifer Closshey

Reverend Richard Collins

Reverend Marvin Dennis

Reverend Kenneth Draughon

Dr. Saturnino Gonzalez

Reverend JR Gould

Former Senator Oscar N. Harris

Reverend Mark Jakelsky

Reverend John Jordan

Reverend Dennis Lacy

Reverend Steve Mason

Reverend Terry Roberts

Reverend Ramon Rojas

Reverend Robert Thompson

Reverend Randy Valimont

Reverend Max Yeary

ACCREDITATION

Southeastern University is accredited by the **Commission on Colleges of the Southern Association of Colleges and Schools** to award baccalaureate and masters degrees. Contact the Commission on Colleges at 1866 Southern Lane, Decatur, Georgia 30033-4097 or call 404-679-4500 for questions about the accreditation of Southeastern University.

Other discipline specific accreditations and licensures:


- ☐ Council on Social Work Education (CSWE)
- ☐ International Assembly for Collegiate Business Education (IACBE)
- ☐ Florida Department of Education (FLDOE) – *Southeastern University is approved to grant degrees that meet certification requirements for a Florida teaching credential.*



INSTITUTIONAL MEMBERSHIPS

- ☐ American Association of Colleges for Teacher Education (AACTE)
- ☐ American Association of Collegiate Registrars and Admissions Officers (AACRAO)
- ☐ Association of American Colleges and Universities (AAC&U)
- ☐ Association of Christian Schools International (ACSI)
- ☐ Association for General and Liberal Studies (AGLS)
- ☐ Association of Institutional Research (AIR)
- ☐ Association to Advance Collegiate Schools of Business (AACSB International)
- ☐ The Alliance for Assemblies of God Higher Education (The Alliance)
- ☐ Commission on Colleges of the Southern Association of College and Schools (COC)
- ☐ Council for Christian Colleges and Universities (CCCCU)
- ☐ Council of Independent Colleges (CIC)
- ☐ Council on Higher Education Accreditation (CHEA)
- ☐ Florida Association of Colleges and Universities (FACU)
- ☐ Florida Association of Colleges for Teacher Education (FACTE)
- ☐ Florida League of Christian Schools (FLOCS)
- ☐ Independent Colleges and Universities of Florida (ICUF)
- ☐ National Association of Independent Colleges and Universities (NAICU)
- ☐ National Association of Intercollegiate Athletes (NAIA)
- ☐ National Christian College Athletic Association (NCCAA)
- ☐ National Religious Broadcasters (NRB)

HISTORY OF SOUTHEASTERN UNIVERSITY

outheastern University was founded in 1935 by Alabama District Superintendent J.C. Thames and other Southeastern District leaders. Originally named the Alabama Shield of Faith Institute, in 1936 it was renamed the South-Eastern Bible Institute. Guy Shields was the first president.

Originally located in a former high school building in New Brockton, Alabama, the school opened its doors to students on November 4, 1935, under the direction of four faculty members. Two years later, on May 22, 1937, the first graduation exercises were held. Seventeen students received diplomas for the two-year academic program.

SEBI continued classes in New Brockton until 1940 when a decision was made to consolidate the school with Beulah Heights Bible Institute in Atlanta, Georgia. The school was known from 1940 to 1942 as the Beulah Heights—South-Eastern Bible Institute. In the fall of 1942, Rev. Ralph Byrd allowed the school to relocate to his congregation at 301-7 Capital Avenue, SW in Atlanta where it then was again named the South-Eastern Bible Institute.

In 1946, the Board of Directors voted to secure a permanent location for the full development of the school. A new campus location was purchased later that year in Lakeland, Florida. The Atlanta campus was sold and development of the new site was begun. From 1946 to 1952, SEBI was located at the Lodwick School of Aeronautics in Lakeland. In 1952, the school moved to its present location at Longfellow Boulevard.

Student body growth continued at the new central Florida campus along with the academic program. SEBI became South-Eastern Bible College in 1956 when four-year Bachelor of Arts degree programs were begun. After adding education degrees, the College Board of Directors changed the school name to Southeastern College of the Assemblies of God in 1977.

In 1986, Southeastern was granted regional accreditation by the Southern Association of Colleges and Schools. Accreditation was reaffirmed in 1991 and 2001. In 2005, Southeastern College officially became Southeastern University, began offering its first Master's Degree programs, and formed the Colleges of Arts & Sciences, Business, Christian Ministries & Religion, and Education.

What began in 1935 as a Bible-training school is now the largest Assemblies of God educational institution in America, producing future Christian leaders in the fields of church ministries, education, medicine, law, business, communication, psychology, social work, literature, and music.

POINTS OF EXCELLENCE

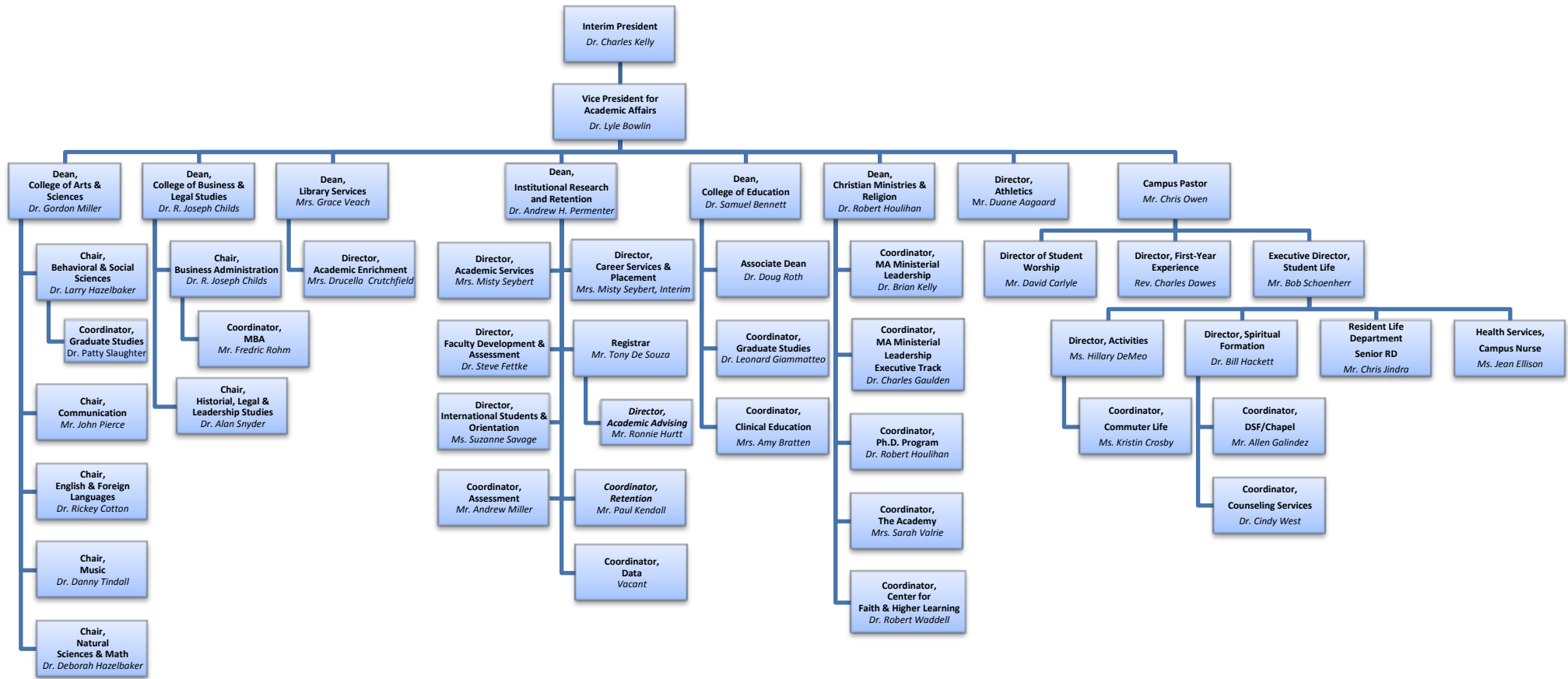
2009 - 2010

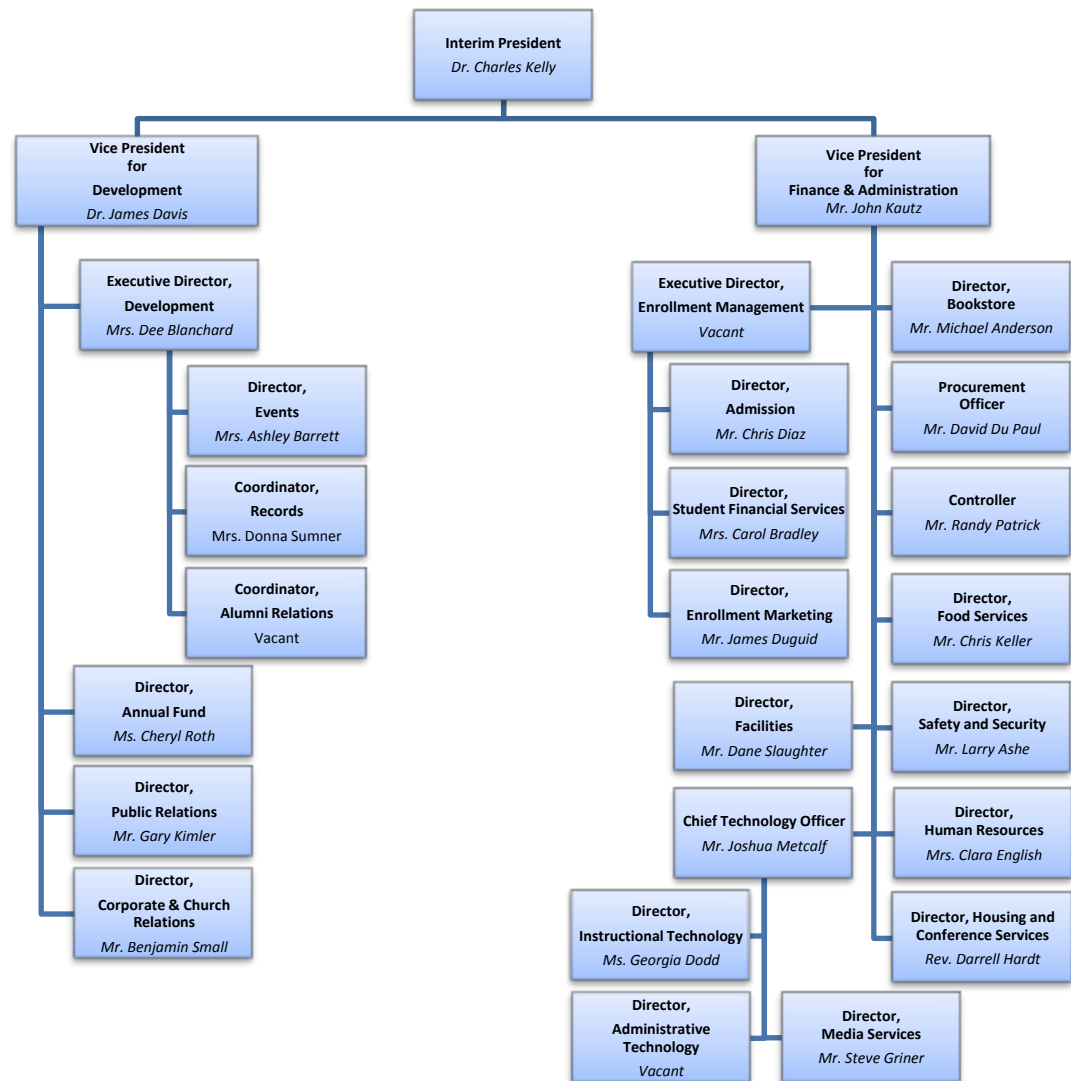
- **The George O. Wood Jerusalem Studies Center** – Southeastern University offers an International Studies Program in Jerusalem that builds upon our solid tradition of Christian education and emphasizes the university's commitment to servant leadership globally. The program enhances the current course offerings in the area of ministerial studies, history, and archaeology through on-site course work and research in Jerusalem. The University has acquired a lease on a new facility located in downtown Jerusalem, just minutes from the Old City. The Board of Regents has unanimously voted to name the facility in honor of Dr. George O. Wood, General Superintendent of the Assemblies of God.
- **The Longfellow Project** – This \$1.75 million project will radically change entry to University property from North Crystal Lake Drive. The multi-faceted project will include the widening and re-paving of Longfellow, a landscaped median, decorative street lighting with underground utilities and sidewalks, and large, stately entry signs on either side of Longfellow at Crystal Lake.
- **SEU has nearly tripled its enrollment** in the last ten years, from just over 1,000 in Fall 1999 to nearly 3,000 students today.
- **A new Masters program, M.A. in Human Services**, was launched in fall 2009. In addition, Southeastern launched the online Master of Education in Teaching and Learning in spring of 2009, bringing the total to eight graduate programs.
- **SEU Continues improvements to its campus facilities.** Since 1999, Southeastern has constructed 6 new buildings and remodeled 10. This accounts for 265,000 new square feet and 262,000 square feet that has been remodeled. 100% of all university-owned student housing is new or has been remodeled within the last 6 years. Southeastern's total campus size has increased to 87 acres.
- **Southeastern athletics has appeared in 44 NCCAA II National Tournaments** since 2003, captured 35 South region titles, and won 13 National Championships. In addition, 96 athletes have been named NCCAA All Americans. Southeastern is now a member of the National Association of Intercollegiate Athletes (NAIA) and the National Christian College Athletic Association (NCCAA).

INSTITUTIONAL GOALS

1. To create and engender a community of authentic Christian faith conducive to successful living and learning. Every decision relative to this atmospheric commitment will be judged against the following core values:
 - a. Authentic Spirituality
Genuine devotion, rather than showmanship, sensuality, and self-centeredness inform our expressions of worship, especially in public.
 - b. A Faith-infused World View
Though certainly not claiming an artificial unanimity on all social and political issues, there is a God-centeredness at the heart of our world views.
 - c. Character Development for Ethics in Life
Our Biblical value system and world view must find expression in a truly Christian ethic. That ethical system must be celebrated in relationships, business, and decision making in all of life. Ethics as a belief system must also find the character to be acted upon.
 - d. A Family-oriented Community of Servants
Servanthood in leadership as well as relationship means practical kindness in the example of Christ. We do not believe it possible to fully serve God without serving humanity. We likewise believe it is not possible to fully serve humanity without serving the family of God in this place.
 - e. Professional and Academic Excellence
Our God is a God who “doeth all things well.” “Good enough for church work” is a repugnant phrase to us. Here at SEU and in the professions and ministries to follow, we hold excellence as being consistent with who God is.
 - f. Culturally Literate and Sensitive
If we are committed to serve God and the world in the genuine love of Christ, we must understand the world and its true needs. Sensitivity to the spirits of those around Him was at the heart of Christ's ministry. To understand and respond with sensitive love implies not compromise but compassion.
2. Preserve the evangelical and Pentecostal heritage and message of the Assemblies of God and provide positive direction for its future.

3. Provide a general education program which will equip students with quantitative, verbal, and technological skills; enhance their appreciation of their cultural and religious heritage; strengthen their commitment to the liberal arts; and give them a view of their responsibility as Christian scholars in the community and the wider world.
4. Provide sufficient religious education to enable students to be conversant in the Christian faith, to articulate their own beliefs, and to actualize their faith through consistent growth and practice by the integration of faith in all aspects of life.
5. Provide undergraduate programs of sufficient quality to prepare students for success in graduate and professional school and in the early stages of their careers.
6. Provide graduate programs in various areas which will prepare students for success in post-graduate programs.
7. Achieve the quality of instruction and resources necessary for the national accreditation of selected areas and the development of the additional graduate programs where appropriate.
8. Provide academic support through computer facilities, library resources, student support services and faculty development opportunities to ensure quality instruction and a challenging academic environment.
9. Prepare students for citizenship as Christians in the world through reflective community interactions and teach commitment to ideals of service, benevolence, civic virtue and social justice.
10. Increase the diversity of the faculty and student body, address the unique needs of a diverse campus population, and encourage academic inquiry into minority concerns.
11. Recruit, develop and retain a diverse community of teaching professionals, administrators and support staff who demonstrate excellence in their professional roles and effectively implement the mission of the university in their lifestyles and co-curricular involvement.
12. Continue the growth of the student enrollment and development of the capital assets to optimize student opportunities.
13. Provide quality academic, spiritual, cultural and recreational services to its various publics.





ACADEMIC PROGRAMS

Undergraduate Programs

College of Arts and Sciences

Department of Behavioral and Social Sciences

Majors:

B.S. Human Services (Evening/Weekend)
B.S. Psychology
B.S.W. Social Work

Minors:

Psychology

Department of Communication

Majors:

B.A., B.S. Broadcasting
B.A., B.S. Communication
B.S. Film Studies
B.A., B.S. Journalism/ Public Relations
B.A., B.S. Theater

Minors:

Communication
Creative Writing
Journalism/ Public Relations
Musical Theater
Web Application & Development
Theatre

Department of English and Foreign Languages

Majors:

B.A. English
B.S. English & Intercultural Studies

Minors:

English
French
Greek
Spanish

Department of Music

Majors:

B.S. Church Music
B.A. Music
B.S. Music Education
B.M. Music Performance

Minors:

Church Music
Music
Music Technology

Department of Natural Science and Mathematics

Majors:

B.S. Biology/ Pre-Med
B.S. General Biology
B.A. Mathematics

Minors:

Chemistry
Mathematics

College of Business and Legal Studies

Department of Business Administration

Majors:

B.S. Accounting
B.S. International Business
B.S. Finance
B.S. Management
B.S. Management Information System
B.S. Marketing

Minors:

Business
Web Application & Development

Department of Historical, Legal, and Leadership St.

Majors:

B.S. Criminal Justice
B.A. History
B.S. Leadership

Minors:

Criminal Justice
Pre-Law
Public Policy
History

Undergraduate Programs

<i>College of Christian Ministries and Religion</i>	<i>College of Education</i>
Majors: B.S. Church Ministries B.A. Interdisciplinary Studies B.A. Missional Ministries B.S. Practical Theology Minors: Bible Children's Ministry Leadership Missions Pastoral Ministry Pre-Seminary Studies Youth Youth (Non-Religion Majors) Evangelism	Majors: B.S. Elementary Education B.S. ESE (Exceptional Student Education) B.S. Middle Grades English (Grades 5-9) B.S. Middle Grades General Science (Grades 5-9) B.S. Middle Grades Mathematics (Grades 5-9) B.S. Middle Grades Social Sciences (Grades 5-9) B.S. Music Education B.S. Secondary Biology (Grades 6-12) B.S. Secondary English (Grades 6-12) B.S. Secondary Mathematics (Grades 6-12) B.S. Secondary Social Science (Grades 6-12) B.S. Sports & Recreation Management Minors: Athletic Coaching Early Childhood Elementary Education Exceptional Student Education Middle Grades Education Physical Education Secondary Education

Graduate Programs

<i>College of Business and Legal Studies</i>	<i>College of Christian Ministries and Religion</i>
Master of Business Administration	Master of Arts in Ministerial Leadership
<i>College of Education</i>	<i>Department of Behavior and Social Sciences</i>
Master of Education in Elementary Education Master of Education in Educational Leadership Master of Education in Teaching and Learning	Master of Science in Professional Counseling Master of Science in School Counseling Master of Arts in Human Services

Academic Programs—Continued

<i>Online Programs</i>	<i>Other Programs</i>
Master of Arts in Ministerial Leadership Master of Business Administration Master of Education in Teaching and Learning B.S. Criminal Justice B.S. Management B.S. Marketing B.S. Practical Theology B.S. Human Services	ARMY ROTC – In conjunction with Florida Southern College The Academy – Leading to Certification, Licensure, and Ordination in the Assemblies of God Alternative Certification Program – Teaching Certification (summer program)

ATHLETICS

Southeastern University is a dual member of the National Association of Intercollegiate Athletes (NAIA) and the National Christian College Athletic Association (NCCAA)

Varsity Sports

Men's

Baseball
Basketball
Golf
Soccer

Women's

Basketball
Cheerleading
Soccer
Tennis
Volleyball

Intramural Sports

Men's and Women's

Basketball
Dodge Ball
Flag Football
Powder Puff Football
Soccer

Softball
Ultimate Frisbee
Volleyball
X-Box Tournament

LEADERSHIP POSITIONS

Athletic Leadership Institute
Chapel Assistants
Commuter Assistant
Community Leader
Department of Spiritual Formation Student Leaders

FIRST Teams Leader & Mentoring program
Resident Assistant
Southeastern Singers
Student Body Leadership Council
FIRST Teams Leader & Mentoring Program

CLUBS & ORGANIZATIONS

American Association of Christian Counselors
Collegiate Music Educators National Conference
College Republicans
Florida Public Relations Association
FX
Habitat for Humanity
Kappa Delta Pi
Ethnos International
Ner Tamid (Eternal Light)
Phi Alpha Honor Society
Alpha Chi
Psi Chi
Sigma Beta Delta
Sigma Chi Pi
RAW TV
Social Work Club
Soul Food
Student Christian Medical & Dental Association
destinations
Students in Free Enterprise (SIFE)
The Southeastern Times
The Torch Staff
Unplanned Improv
Sports Management
Chapel Assistants
DSF Student Leaders

Resident Assistants
Community Leaders
First Teams Leaders & Mentors
Southeastern Singers
Wind Ensemble
Jazz Band
Concert Choir
Chamber Singers
Worship Teams
Student Body Leadership Council
FIRST Society
Preaching Team
Oracle, a Creative Writing Society
Honors Program
Pentecostals and Charismatics for Peace and Justice
Fire TV Network
Southeastern Radio, WSEU
Library Student Workers
ACE Student Workers
Athletic Leadership Institute
Army ROTC
Reach One
Global Evangelism Outreach (G.E.O.)
Lighthouse
Taekwondo
Commuter Life

2009 – 2010 Tuition and Fees

Undergraduate

Tuition	Semester	Year
Less than 12 hours	\$605/hour	\$605/hour
12-17 hours	\$7,225.00	\$14,450.00
More than 17 hours	\$7,225.00 plus \$605 for each additional hour above 17 hours	\$14,450.00 plus \$605 for each additional hour above 17 hours
General Student Fee	\$275.00	\$550.00
<hr/>		
Total for Off-Campus*	\$7,500.00	\$15,000.00
Residence Halls		
Mira Lago	\$1,795.00	\$3,590.00
Valencia	\$1,800.00	\$3,600.00
Bauer, Bethany & South Pointe	\$1,873.00	\$3,746.00
Aventura, Destino & Esperanza	\$2,080.00	\$4,160.00
Other Housing	\$2,216.00, \$2,337.00, or \$2,579.00	\$4,432.00, \$4,674.00, or \$5,158.00
Meals Plans		
Carte Blanche Meal Plan	\$1,955.96	\$3,911.92
20-Meal Plan	\$1,909.66	\$3,819.32
14-Meal Plan	\$1,850.13	\$3,700.26
10-Meal Plan	\$1,806.65	\$3,613.30
Commuter Meal Plan	\$617.55	\$1,235.10
Room and Meal Plan*	\$3783.00	\$7,566.00
<hr/>		
Total for On-Campus*	\$11,283.00	\$22,566.00

**Based on 14-17 Hrs, 20-meal plan, and Bethany or Bauer Halls occupancy*

Other Estimated Expenses	Year
Books and supplies	\$1,000.00
Misc. (transportation, laundry, entertainment, ect...)	\$2,250.00

2009 – 2010 Tuition and Fees

Graduate

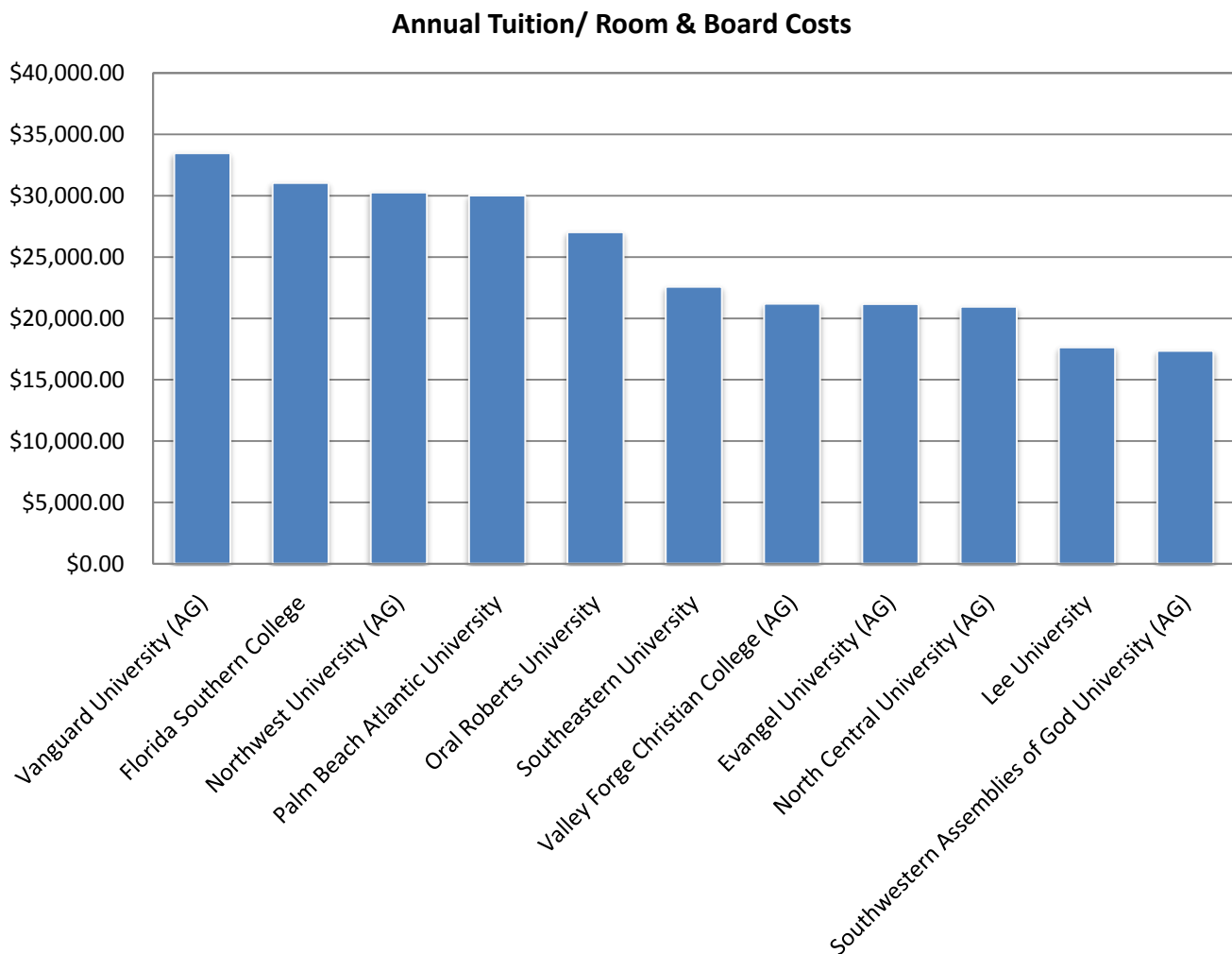
<i>Program</i>	<i>Tuition</i>	<i>Credit Hours</i>
Master of Arts in Ministerial Leadership	\$450/hour	36
Master of Arts in Ministerial Leadership-Executive Track (2010)	\$450/hour	36
Master of Arts in Human Services	\$450/hour	36
Master of Business Administration	\$450/hour	36
Master of Education in Educational Leadership	\$275/hour	36
Master of Education in Elementary Education	\$275/hour	33
Master of Education in Teaching and Learning (Online)	\$275/hour	36
Master of Science in Professional Counseling	\$450/hour	60
Master of Science in School Counseling	\$450/hour	60
Average Graduate Tuition Per Hour	\$392/hour	
Average Annual General Student Fee	\$280	
Average Annual Cost Per Program	\$9,408	
Average Tuition to Complete Graduate Program	\$16,408	

2009 – 2010 Tuition/Room & Board Comparison

Southeastern University compared to other schools

School	Annual Tuition/Room & Board
Vanguard University (AG)	\$33,466.00
Florida Southern College	\$31,037.00
Northwest University (AG)	\$30,260.00
Palm Beach Atlantic University	\$30,010.00
Oral Roberts University	\$27,022.00
* Southeastern University	\$22,566.00
Valley Forge Christian College (AG)	\$21,183.00
Evangel University (AG)	\$21,170.00
North Central University (AG)	\$20,946.00
Lee University	\$17,630.00
Southwestern Assemblies of God University (AG)	\$17,348.00

* ***Southeastern's tuition ranked 96th out of the 106 CCCU Schools in 2008.***



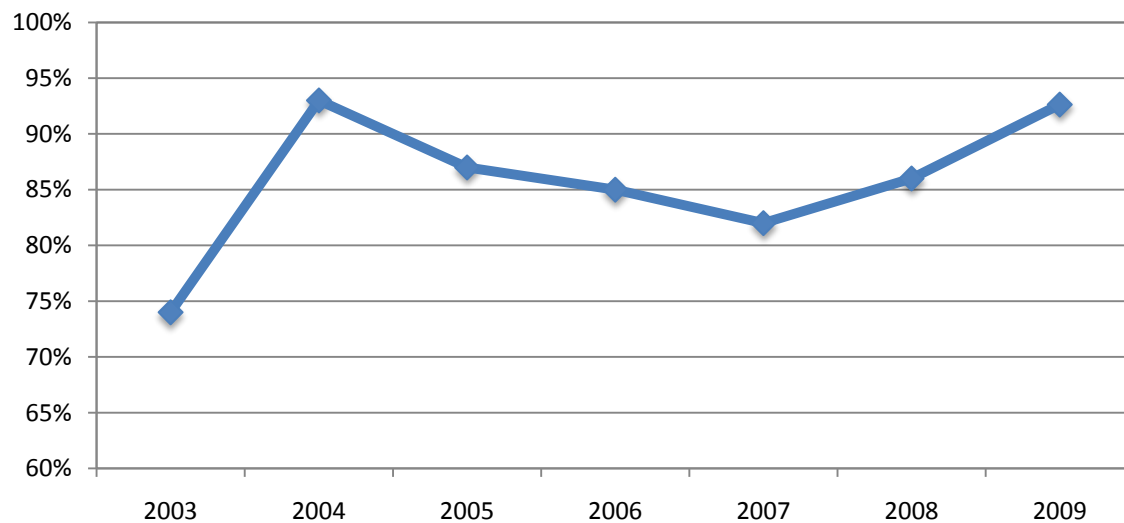
Financial Aid – Entering Freshmen

Fall 2003 – Fall 2009

	2003	2004	2005	2006	2007	2008	2009
% Receiving any Financial Aid	74%	93%	87%	85%	82%	86%	93%
% Receiving Federal Grants	25%	32%	26%	24%	25%	30%	37%
Average amount of Federal Grants	\$2,859	\$2,834	\$2,905	\$2,977	\$4,381	\$5,177	\$4,609
% Receiving State/Local Grants	38%	50%	52%	47%	51%	50%	52%
Average amount of State/Local Grants ¹	\$3,525	\$3,611	\$4,219	\$4,464	\$5,352	\$5,416	\$4,406
% Receiving Institutional Grants	46%	57%	52%	59%	57%	66%	76%
Average amount of Institutional Grants	\$2,234	\$2,223	\$2,001	\$2,225	\$3,200	\$4,165	\$6,067
% Receiving Student Loans	69%	86%	72%	77%	65%	69%	83%
Average amount of Student Loans	\$3,010	\$2,528	\$6,870	\$6,220	\$12,946	\$13,995	\$10,147

¹ In 2009, the State of Florida decreased funding for the Florida Resident Access Grant and Bright Futures Academic Programs.

% of Students Receiving Financial Aid



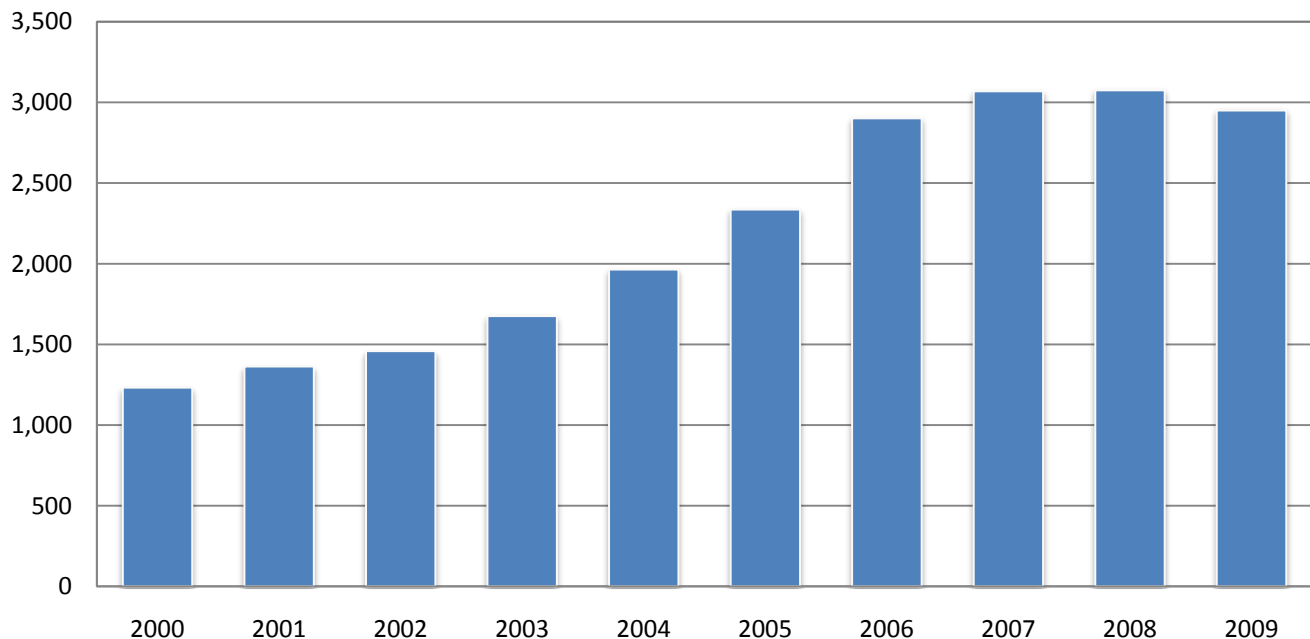
Enrollment

Fall 2000 – Fall 2009 Graduate and Undergraduate

<i>Undergraduate</i>									
2000	2001	2002	2003	2004	2005	2006	2007	2008	2009
1,232	1,363	1,458	1,675	1,964	2,297	2,810	2,931	2,867	2,665

<i>Graduate</i>					
	2005	2006	2007	2008	2009
Master of Arts in Ministerial Leadership (M.A.)	39	59	54	64	63
Master of Business Administration (M.B.A.)		32	52	60	49
Master of Education in Educational Leadership (M.Ed.)				14	22
Master of Education in Elementary Education (M.Ed.)			6	24	24
Master of Education in Teaching and Learning (M.Ed.)					56
Master of Arts in Human Services (M.A.)					2
Master of Science in Professional Counseling (M.S.)			12	19	29
Master of Science in School Counseling (M.S.)				3	6
Non-Degree Seeking			14	24	34
	39	91	138	208	285

<i>Total Students</i>									
2000	2001	2002	2003	2004	2005	2006	2007	2008	2009
1,232	1,363	1,458	1,675	1,964	2,336	2,901	3,069	3,075	2,950



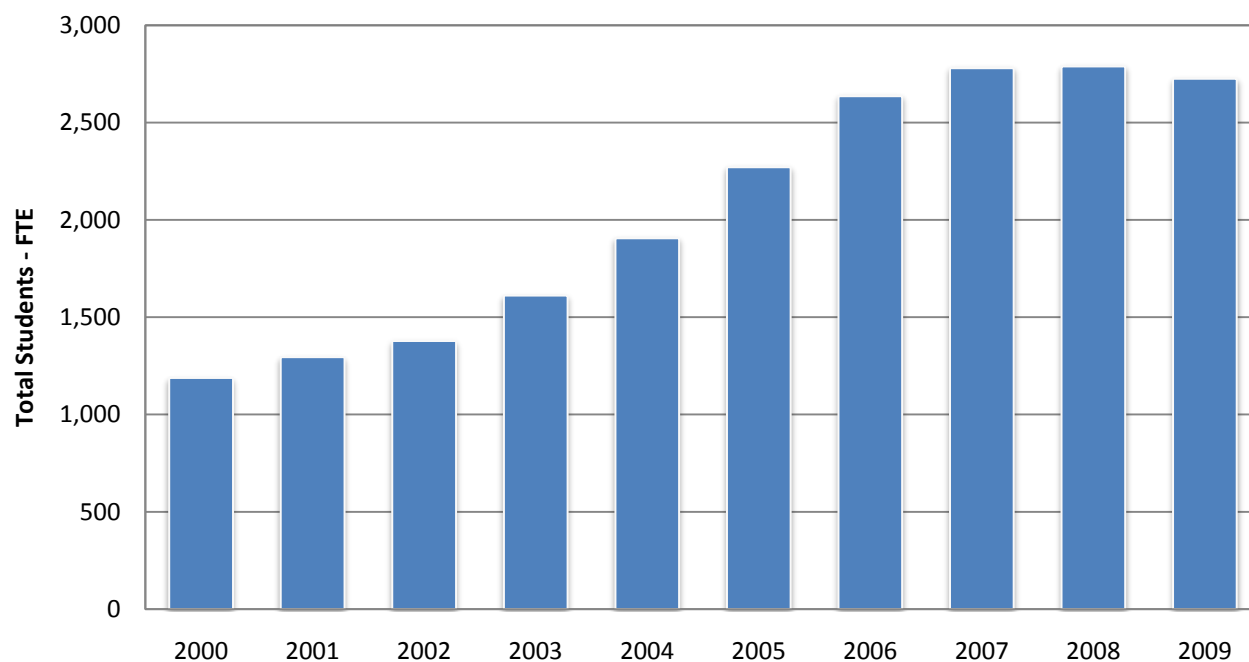
Enrollment – Full-Time Equivalency

Fall 2000 – Fall 2009 Graduate and Undergraduate

<i>Undergraduate</i>									
2000	2001	2002	2003	2004	2005	2006	2007	2008	2009
1,188	1,295	1,378	1,611	1,906	2,225	2,551	2,664	2,618	2,494

<i>Graduate</i>						2005	2006	2007	2008	2009
						46	86	116	171	231

<i>Total Students</i>									
2000	2001	2002	2003	2004	2005	2006	2007	2008	2009
1,188	1,295	1,378	1,611	1,906	2,271	2,636	2,780	2,789	2,725



**FTE – 12 part-time hours equal one full-time equivalent student*

Enrollment by Major

Fall 2009 Total Enrollment

College of Arts & Sciences

College of Arts & Sciences Enrollment: 763

Department of Behavioral & Social Sciences

Human Services	145
Psychology (BA)	29
Psychology (BS)	90
Social Work	55

Department Total 319

Department of Communication

Broadcasting (BA)	11
Broadcasting (BS)	23
Communication (BA)	12
Communication (BS)	33
Film Studies	36
Journalism/PR (BA)	12
Journalism/PR (BS)	33
Theatre (BA)	8
Theatre (BS)	8

Department Total 176

Department of English & Foreign Language

English (BA)	37
English & Intercultural Studies	34

Department Total 71

Department of Music

Music Performance (Instrumental)	5
Music Performance (Piano)	4
Music Performance (Voice)	9
Church Music (BS)	30
Music (BA)	15
Music Education (BS)	31

Department Total 94

Department of Natural Sciences & Mathematics

General Biology	17
Biology/Pre-Med	77
Mathematics (BA)	9

Department Total 103

College of Business & Legal Studies

College of Business & Legal Studies Enrollment: 428

Department of Business Administration

Accounting	21
Business and Professional Leadership	65
Finance	25
International Business	23
Management	92
Management Information Systems	14
Marketing	39
Pre-Business	78

Department Total 357

Department of Historical, Legal, & Leadership Studies

Criminal Justice (BA)	9
Criminal Justice (BS)	32
History (BA)	23
Business Leadership	7

Department Total 71

Enrollment by Major

Fall 2009 Total Enrollment

College of Christian Ministries & Religion

College of Christian Ministries & Religion Enrollment: 338

Church Leadership	40	Pastoral Ministry	1
Church Ministries	78	Practical Theology (Ministry Arts)	2
Interdisciplinary Studies	44	Practical Theology (BS)	161
Missional Ministries	12		

College of Education

College of Education Enrollment: 260

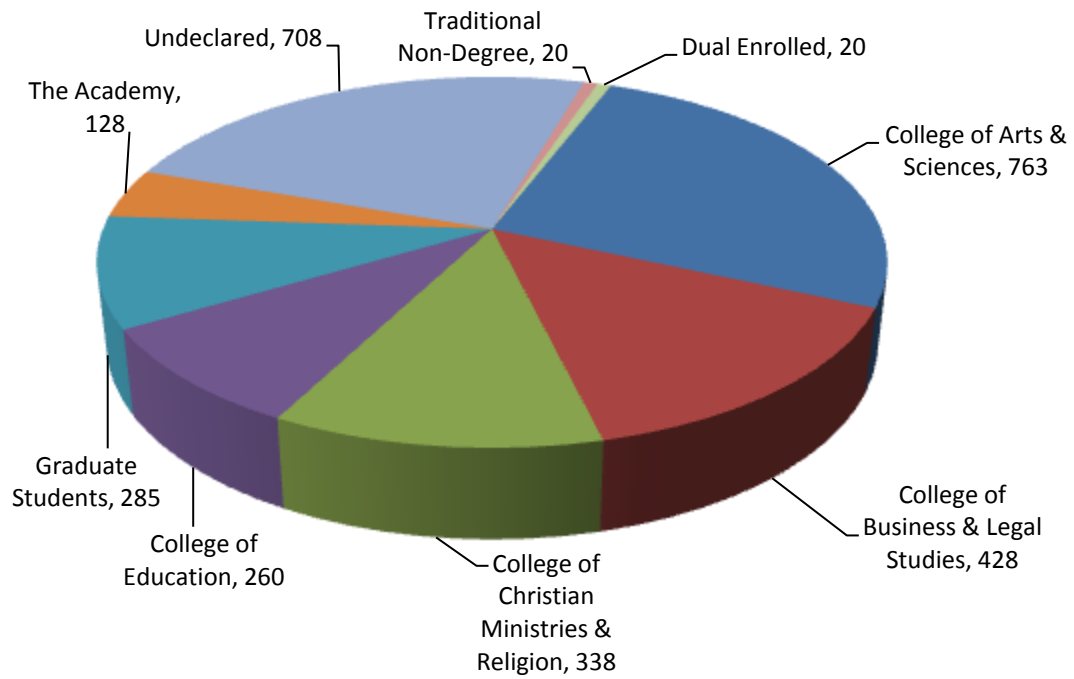
Early Childhood Education (AA)	2	Middle Grades Social Science	1
Elementary Education (K-6)	139	Secondary Biology (BS)	4
Exceptional Student Education	26	Secondary English (BS)	19
Middle Grades English	2	Secondary Mathematics (BS)	12
Middle Grades General Science	1	Secondary Social Sciences (BS)	21
Middle Grades Mathematics	6	Sports & Recreations Management (BS)	27

Totals

College of Arts & Sciences	763
College of Business & Legal Studies	428
College of Christian Ministries & Religion	338
College of Education	260
	1789
Graduate Studies	285
The Academy	128
Undeclared	708
Undergraduate Non-Degree	20
Dual Enrolled	20
	1161
Total University Enrollment	2950

Enrollment by Major

Fall 2009 Total Enrollment



Enrollment by Gender

Fall 2000 – 2009 Graduate and Undergraduate

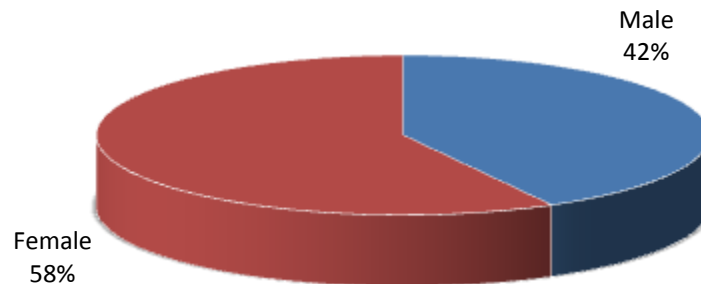
<i>Undergraduate</i>										
	2000	2001	2002	2003	2004	2005	2006	2007	2008	2009
Male	580	653	638	782	882	994	1,199	1,234	1,208	1,127
Female	652	710	768	893	1,081	1,290	1,611	1,697	1,659	1,538

<i>Graduate</i>										
						2005	2006	2007	2008	2009
Male						31	77	80	118	111
Female						8	14	58	90	174

<i>Total Students</i>										
	2000	2001	2002	2003	2004	2005	2006	2007	2008	2009
Male	580	653	638	782	882	1,025	1,276	1,314	1,326	1,238
Female	652	710	768	893	1,081	1,298	1,625	1,755	1,749	1,712

<i>Percentage of Total Students</i>										
	2000	2001	2002	2003	2004	2005	2006	2007	2008	2009
Male	47%	48%	45%	47%	45%	44%	44%	42%	43%	42%
Female	53%	52%	55%	53%	55%	56%	56%	58%	57%	58%

Percentage by Gender



Enrollment by State of Residence

Fall 2009

<i>State</i>	<i>Number of Students</i>	<i>State</i>	<i>Number of Students</i>
Alabama	29	Nebraska	1
Alaska	7	Nevada	1
Arizona	9	New Hampshire	10
Arkansas	4	New Jersey	47
California	16	New Mexico	2
Colorado	10	New York	67
Connecticut	22	North Carolina	73
Delaware	6	North Dakota	1
District of Columbia	0	Ohio	81
Florida	1845	Oklahoma	2
Georgia	78	Oregon	3
Hawaii	1	Pennsylvania	89
Idaho	0	Puerto Rico	5
Illinois	61	Rhode Island	3
Indiana	16	South Carolina	32
Iowa	4	South Dakota	0
Kansas	10	Tennessee	23
Kentucky	16	Texas	25
Louisiana	7	Utah	1
Maine	2	Vermont	6
Maryland	32	Virginia	54
Massachusetts	20	Washington	6
Michigan	36	West Virginia	13
Minnesota	12	Wisconsin	22
Mississippi	6	Wyoming	0
Missouri	12	Unknown	127
Montana	1		

Percentage from the State of Florida: 63%

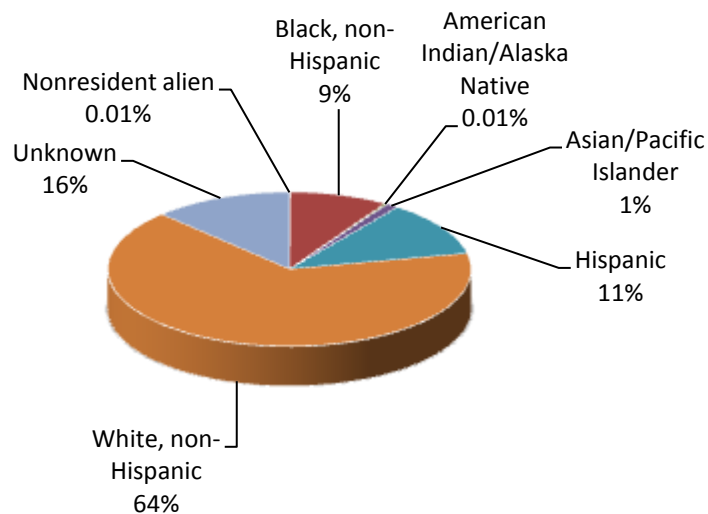
Enrollment by Racial/Ethnic Group

Fall 2003 – Fall 2009 Total Enrollment

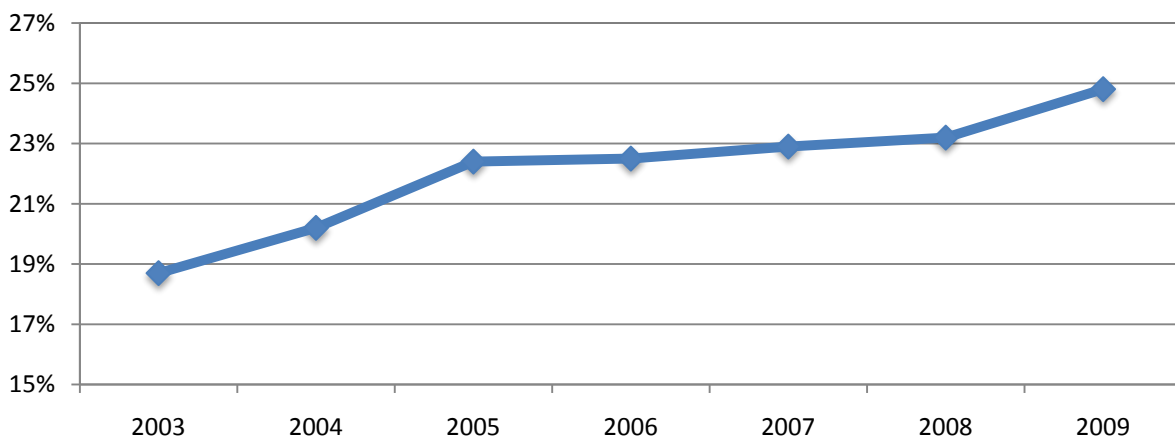
Racial/Ethnic Group	2003	2004	2005	2006	2007	2008	2009
Nonresident Alien	14	7	5	3	3	2	2
Black, non-Hispanic	101	116	163	198	203	216	258
American Indian/Alaska Native	9	8	10	7	6	3	7
Asian/Pacific Islander	22	35	35	35	33	32	32
Hispanic	146	207	280	310	331	344	342
White, non-Hispanic	1,288	1,472	1,707	1,902	1,940	1,979	1,943
Race/Ethnicity unknown	95	119	136	446	553	499	366
Total	1,675	1,964	2,336	2,901	3,069	3,075	2,950

Ethnic Minority Percentage **18.7%** **20.2%** **22.4%** **22.5%** **22.9%** **23.2%** **24.8%**

**Ethnicity Unknown not included in Minority Percentage calculations*



Ethnic Minority Percentage



Enrollment – International Students/Nations

Fall 2009

Country	Totals	Country	Totals
Angola	1	Mexico	1
Australia	1	Netherlands Antilles	2
Bahamas	13	Nigeria	1
Belgium	1	Saint Barthélemy	1
Bermuda	2	South Africa	3
Brazil	9	Sweden	1
Burma/ Myanmar	1	United Arab Emirates	1
Cameroon	1	Venezuela	1
Canada	16	Unknown	2
Chile	1		
China	1		
Colombia	3		
Czechoslovakia	1		
Ecuador	4		
El Salvador	1		
Finland	1		
Gabon	1		
Germany	3		
Great Britain (UK)	4		
Guatemala	3		
Haiti	11		
India	2		
Jamaica	6		
Korea (North)	1		
Korea (South)	2		

Total International Students 103

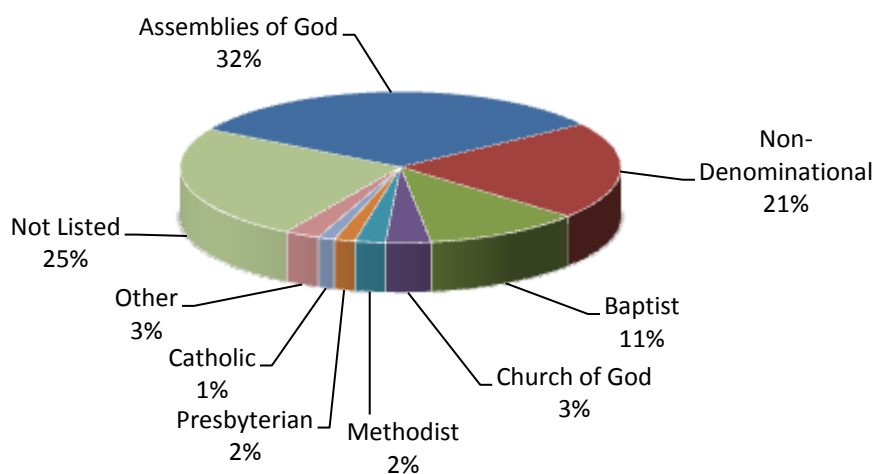
Percent of Total Enrollment 3.5%

****International students represent 40 countries***

Enrollment by Denomination

Fall 2009

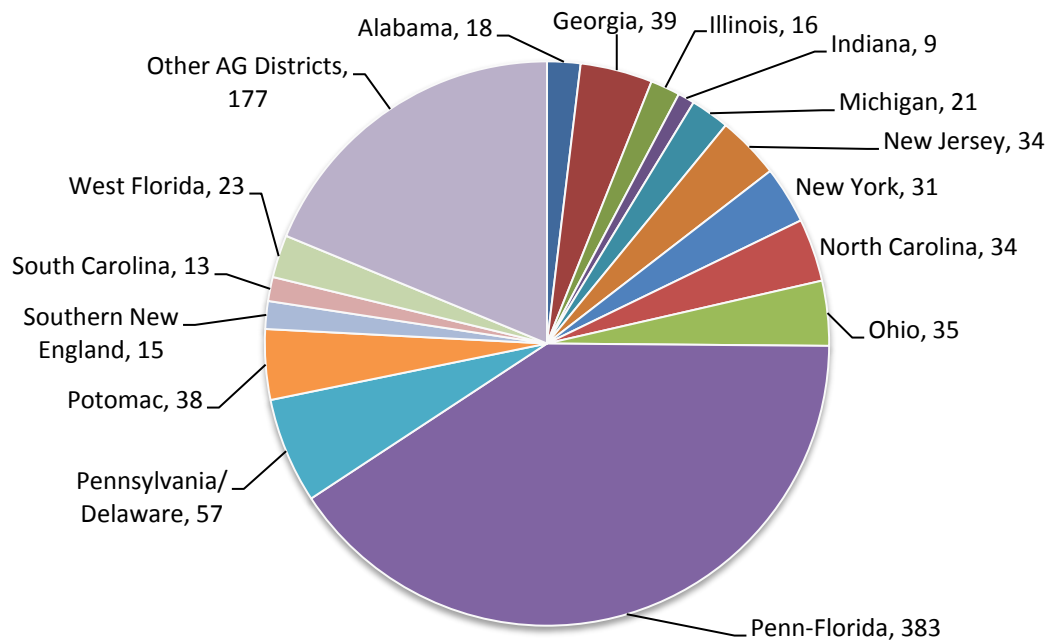
<i>Religion</i>	<i>Number of Students</i>	<i>Percentage of Students</i>
Assemblies of God	943	32%
Non-Denominational	615	21%
Baptist	338	11%
Church of God	97	3%
Methodist	66	2%
Presbyterian	45	2%
Catholic	36	1%
Other	75	3%
Not Listed	727	25%



Enrollment by AG District

Fall 2009

<i>District</i>	<i>Number of Students</i>
Alabama	18
Georgia	39
Illinois	16
Indiana	9
Michigan	21
New Jersey	34
New York	31
North Carolina	34
Ohio	35
Penn-Florida	383
Pennsylvania/Delaware	57
Potomac	38
Southern New England	15
South Carolina	13
West Florida	23
Other AG Districts	177
Total AG Students	943

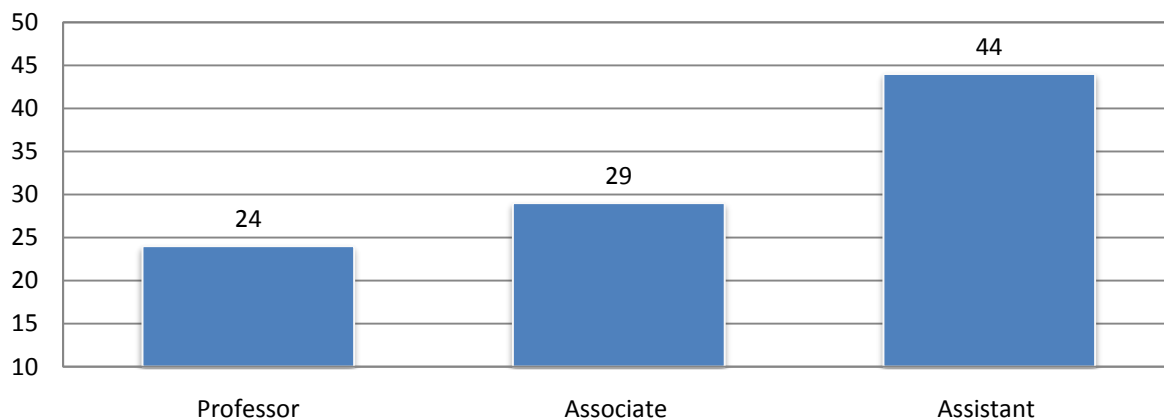


Faculty Roster – Division and Rank

Fall 2009

<i>Division</i>	<i>M.I.R.</i>	<i>Professor</i>	<i>Associate Professor</i>	<i>Assistant Professor</i>	<i>Total</i>
College of Arts & Sciences					43
Behavioral and Social Sciences		1	6	2	9
Communication			3	3	6
English and Foreign Languages		1	1	7	9
Music		2	3	4	9
Natural Sciences and Mathematics		2	2	6	10
College of Business and Legal Studies					18
Business Administration		4	3	6	13
Historical, Legal, and Leadership Studies		1	2	2	5
College of Christian Ministries and Religion	1	5	4	4	14
College of Education		1	2	5	8
Library Faculty			2	3	5
Deans/ Administration		7	1	2	10
Instructional Faculty	1	17	26	39	83
Percentage	1%	20%	31%	47%	
Total Faculty	1	24	29	44	98
Percentage	1%	24%	30%	45%	
Instructional Faculty w/ Terminal Degrees	0	17	22	15	54
Percentage		100%	85%	38%	65%
Total Faculty with Terminal Degrees	0	24	22	16	62
Percentage		100%	76%	36%	63%

Total Faculty by Rank



Student to Faculty Ratio*

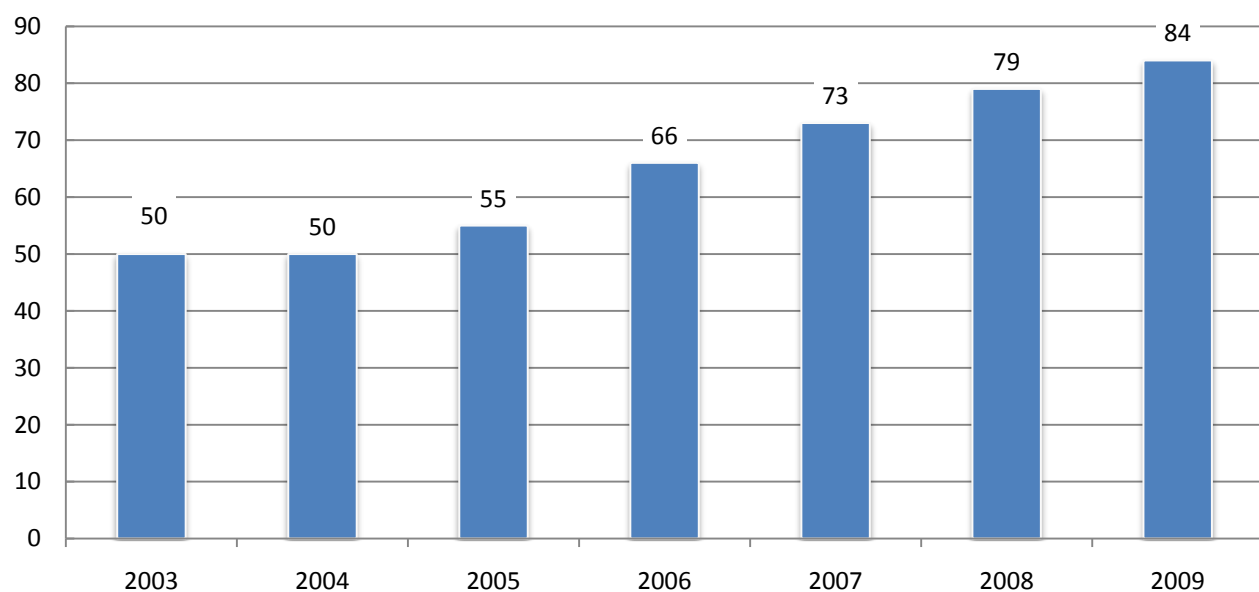
<i>2000</i>	<i>2001</i>	<i>2002</i>	<i>2003</i>	<i>2004</i>	<i>2005</i>	<i>2006</i>	<i>2007</i>	<i>2008</i>	<i>2009</i>
25.1:1	22.3:1	21.4:1	24.8:1	23.7:1	24.9:1	23.1:1	23.8:1	22.0:1	22.0:1

*Student FTE to Faculty FTE

Full-Time Instructional Faculty

Fall 2003-2009

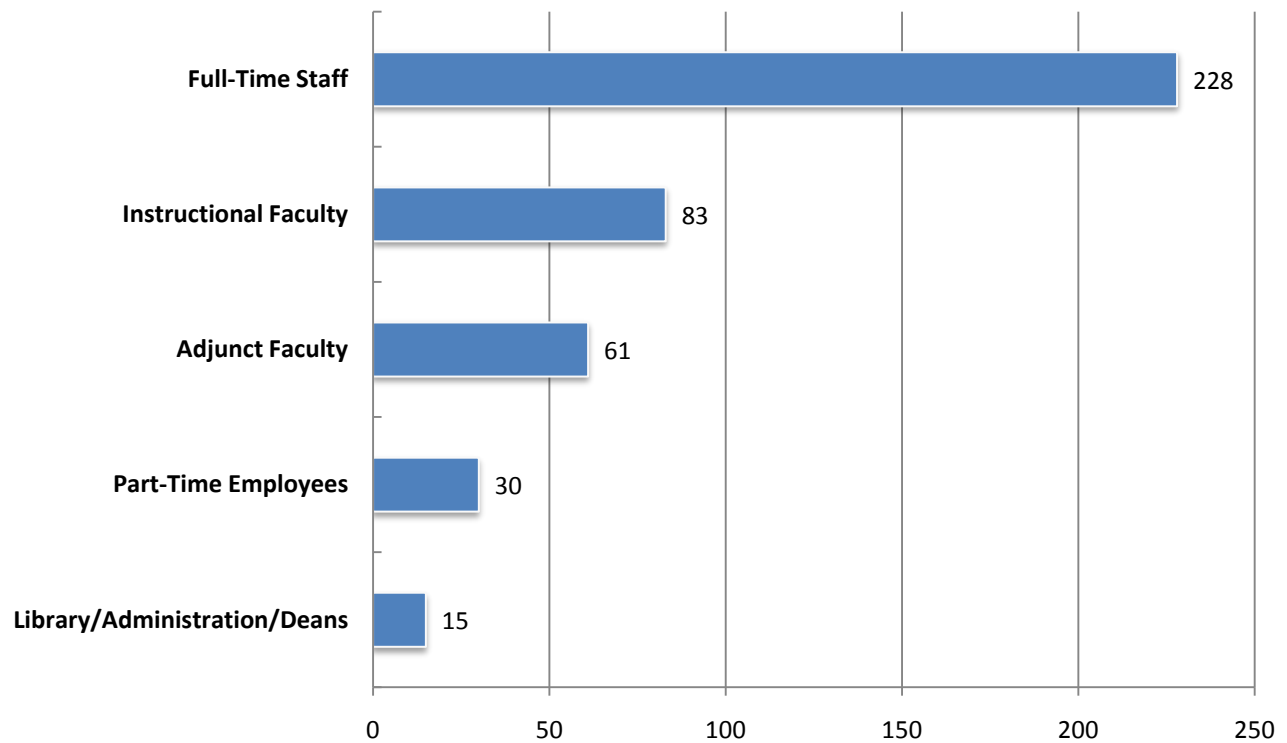
Department/College	2003	2004	2005	2006	2007	2008	2009
College of Arts & Sciences	28	30	32	41	44	44	43
Behavioral and Social Sciences	5	5	6	9	9	10	9
Communication	n/a	n/a	5	5	6	6	6
English and Foreign Languages	n/a	n/a	7	8	9	9	9
Language and Communication Arts	10	12	n/a	n/a	n/a	n/a	n/a
Music	7	7	7	10	10	10	9
Natural Sciences and Mathematics	6	6	7	9	10	9	10
College of Business and Legal Studies	7	6	8	10	11	12	18
Business Administration	n/a	n/a	n/a	n/a	n/a	n/a	13
Historical, Legal, and Leadership Studies	n/a	n/a	n/a	n/a	n/a	n/a	5
College of Christian Ministries and Religion	9	9	9	9	11	14	14
College of Education	6	5	6	6	7	9	8
Total Full-Time Instructional Faculty	50	50	55	66	73	79	83
Instructional Faculty with Terminal Degrees	28	26	31	42	44	44	55
Percentage	56%	52%	56%	64%	60%	56%	65%



Faculty/ Staff/ Administration

Fall 2009

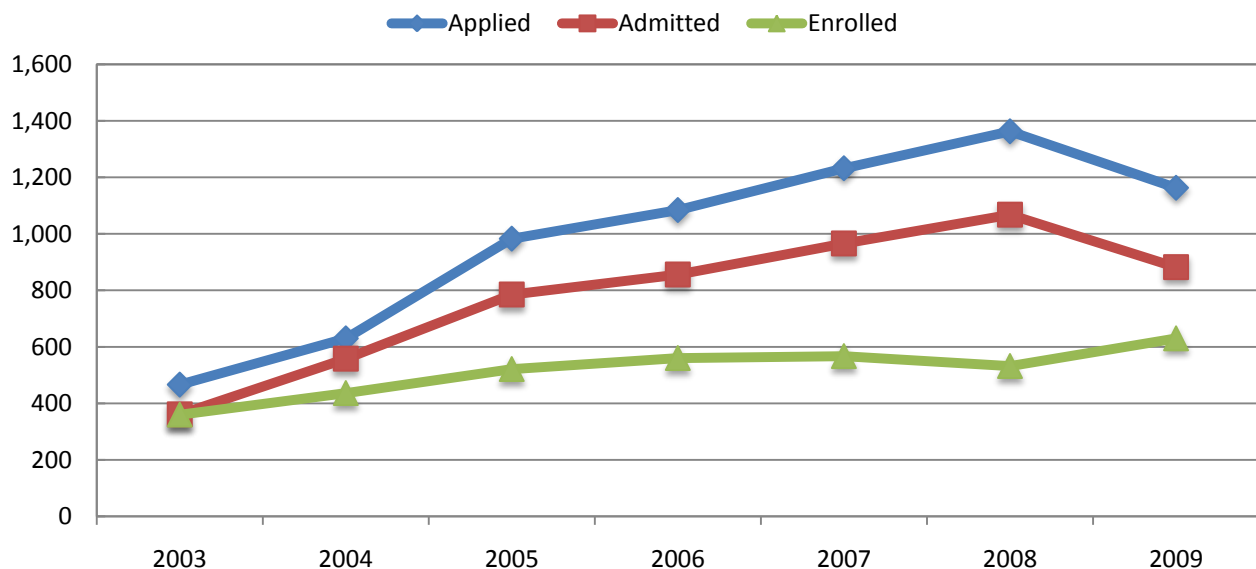
	<i>Total</i>
Instructional Faculty	83
Library/Administration/Deans	15
Full-Time Staff	228
<i>Secretarial/Clerical</i>	<i>65</i>
<i>Technical/Paraprofessional</i>	<i>6</i>
<i>Service/Maintenance</i>	<i>45</i>
<i>Skilled Craft</i>	<i>12</i>
<i>Professional Non-Faculty</i>	<i>76</i>
<i>Executive/Administrative/Managerial</i>	<i>24</i>
Full-Time Employees	326
Adjunct Faculty (Non-Staff)	61
Part-Time Employees (Non-Faculty)	30
Total Employees	417



Applications for Admission—Entering Freshman

Fall 2003 – Fall 2009

		<i>Applied</i>	<i>Admitted</i>	<i>%Admitted</i>	<i>Enrolled</i>	<i>% Admitted that Enrolled</i>
2003	Female	266	201	76%	201	100%
	Male	200	160	80%	159	99%
	Total	466	361	77%	360	99%
2004	Female	380	335	88%	257	77%
	Male	250	223	89%	179	80%
	Total	630	558	89%	436	78%
2005	Female	600	488	81%	321	66%
	Male	383	297	78%	200	67%
	Total	983	785	80%	521	66%
2006	Female	651	515	79%	321	62%
	Male	433	341	79%	239	70%
	Total	1,084	856	79%	560	65%
2007	Female	731	603	82%	333	55%
	Male	501	363	72%	234	64%
	Total	1,232	966	78%	567	59%
2008	Female	809	667	82%	325	47%
	Male	554	401	72%	207	51%
	Total	1,363	1068	78%	532	50%
2009	Female	699	537	77%	379	71%
	Male	464	345	74%	251	73%
	Total	1,163	882	76%	630	71%



SAT, ACT, and GPA—Entering Freshman

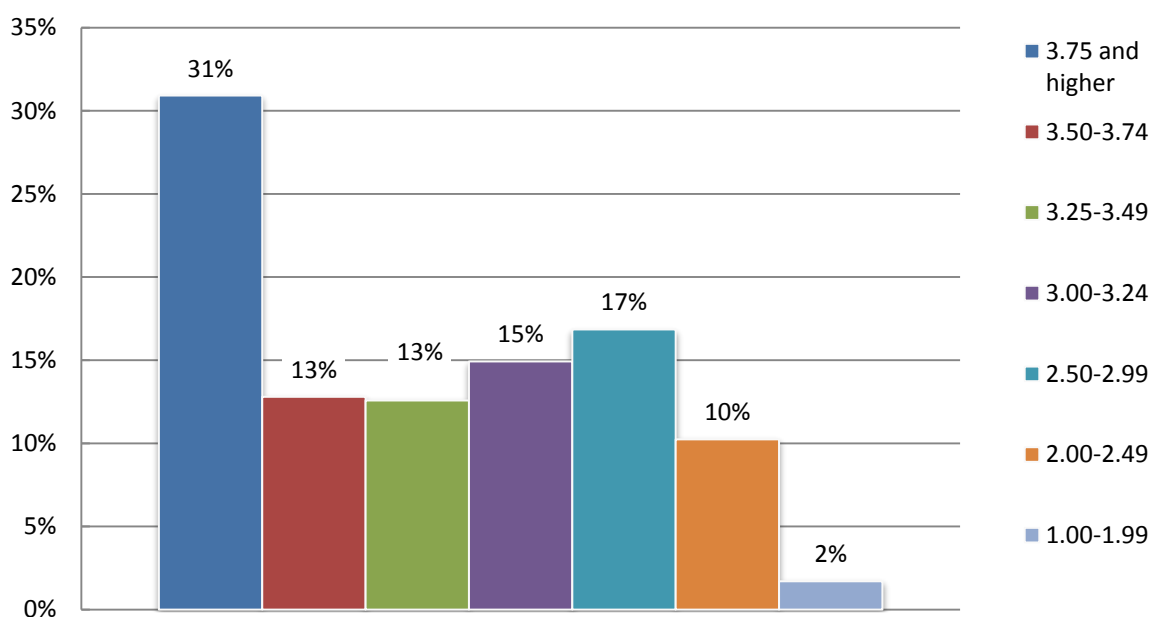
Fall 2009

	SAT Critical Reading	SAT Math	SAT Writing	ACT Composite	ACT Writing Composite
25 th Percentile	440	420	430	17	18
75 th Percentile	560 (<i>n</i> = 363)	540 (<i>n</i> = 363)	550 (<i>n</i> = 363)	23 (<i>n</i> = 163)	23 (<i>n</i> = 148)
Average SAT Composite (Reading & Math Only)			984/1600	(<i>n</i> = 363)	
Average SAT Composite (Reading/Math/Writing)			1476/2400		
Average ACT Composite			21/30	(<i>n</i> = 163)	
Average ACT Writing Composite			21/30	(<i>n</i> = 148)	

GPA Scores

Percent who had GPA of 3.75 and higher	31%
Percent who had GPA between 3.50 and 3.74	13%
Percent who had GPA between 3.25 and 3.49	13%
Percent who had GPA between 3.00 and 3.24	15%
Percent who had GPA between 2.50 and 2.99	17%
Percent who had GPA between 2.00 and 2.49	10%
Percent who had GPA between 1.00 and 1.99	2%
Percent who had GPA below 1.00	0%

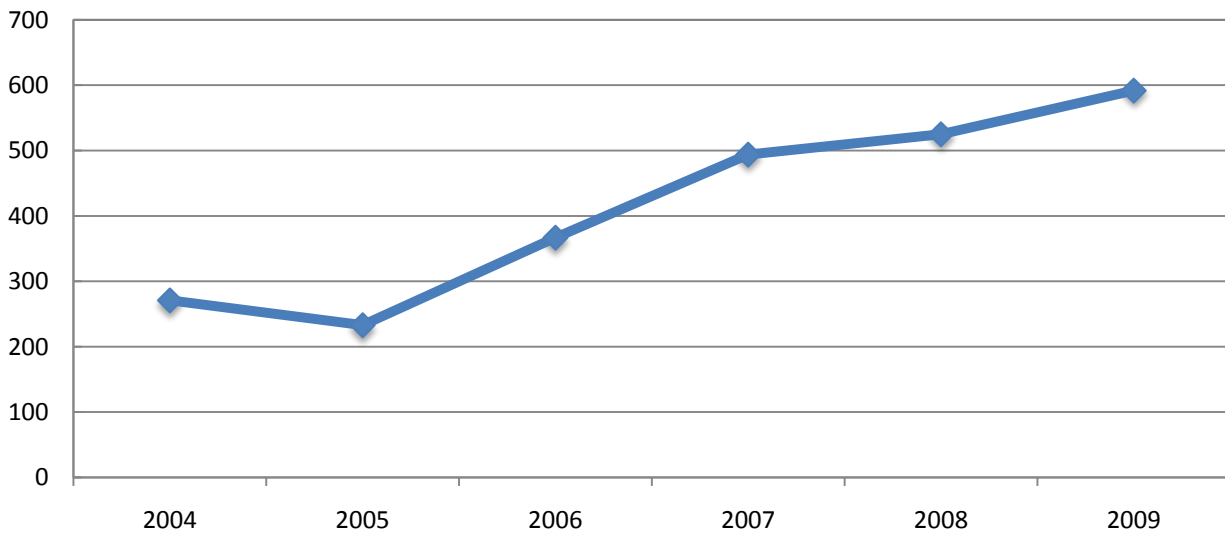
Average high school GPA score of entering Freshmen **3.35**
(*n* = 469)



Completions

2004 - 2009

	2004	2005	2006	2007	2008	2009
Female	136	128	208	265	303	330
Male	135	105	159	229	222	262
Total	271	233	367	494	525	592



*Degrees Conferred July 1st 2008 – June 30th, 2009

	<i>Bachelor's</i>	<i>Master's</i>	<i>All Degrees</i>
By Gender			
Female	309	21	330
Male	220	42	262
By Race/Ethnicity			
White, Non-Hispanic	376	52	428
Hispanic	65	5	70
Black, Non-Hispanic	32	2	34
Asian/Pacific Islander	7		7
American Indian/Alaskan Native	1		1
Nonresident Alien			0
Undesignated	48	4	52
Grand Total	529	63	592

Completions

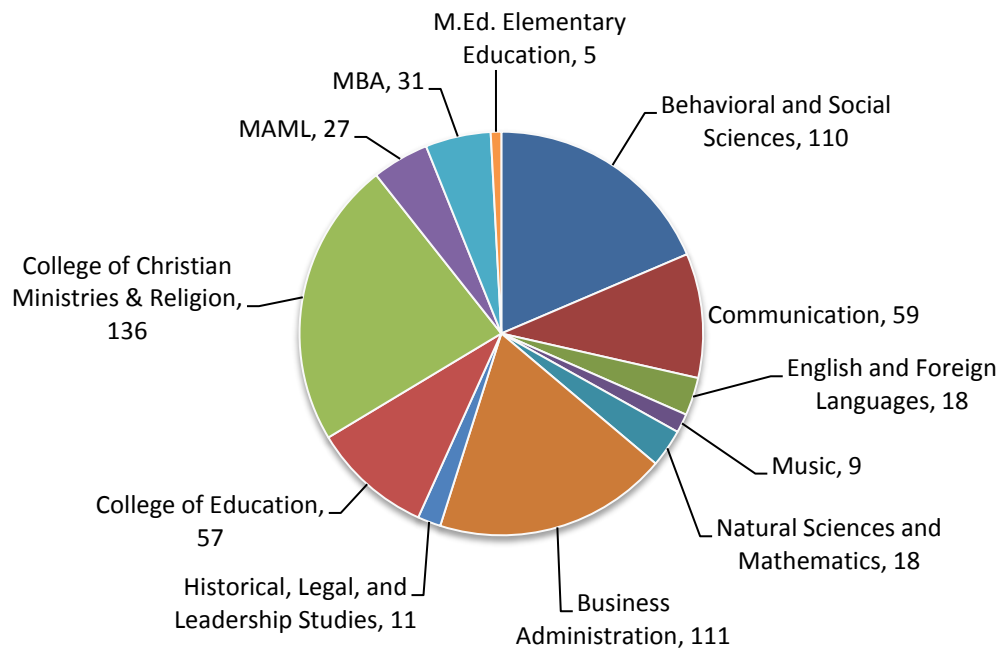
July 1, 2008 – June 30, 2009

Undergraduate Degrees Conferred by Disciplinary Areas

College of Arts & Sciences	214	36%
Behavioral and Social Sciences	110	19%
Communication	59	10%
English and Foreign Languages	18	3%
Music	9	2%
Natural Sciences and Mathematics	18	3%
College of Business and Legal Studies	122	21%
Business Administration	111	21%
Historical, Legal, & Leadership Studies	11	2%
College of Education	57	10%
College of Christian Ministries & Religion	136	23%
Total	529	89%

Graduate Degrees Conferred by Disciplinary Areas

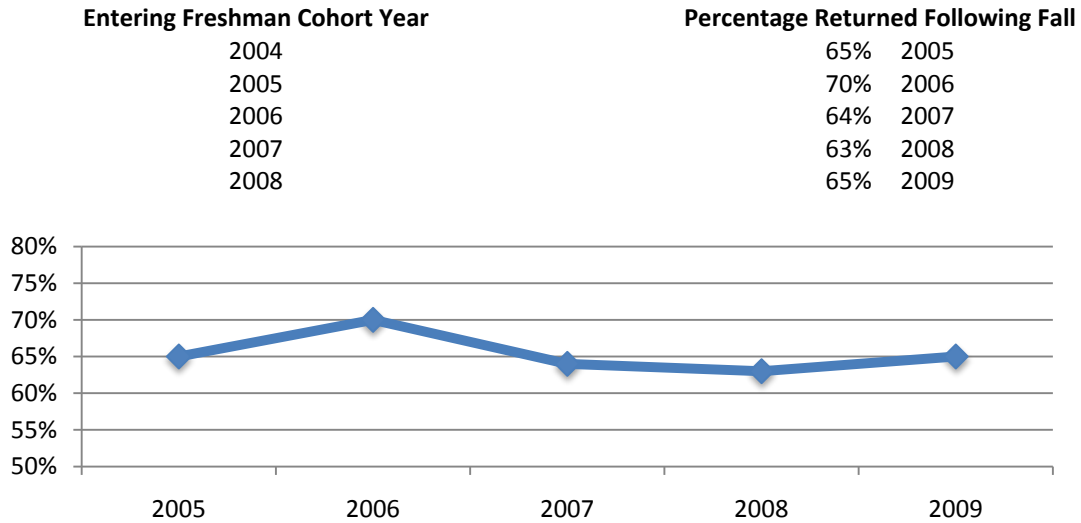
M.A. Ministerial Leadership	27	5%
Master of Business Administration	31	1%
M.Ed. Elementary Education	5	1%
Total	63	11%



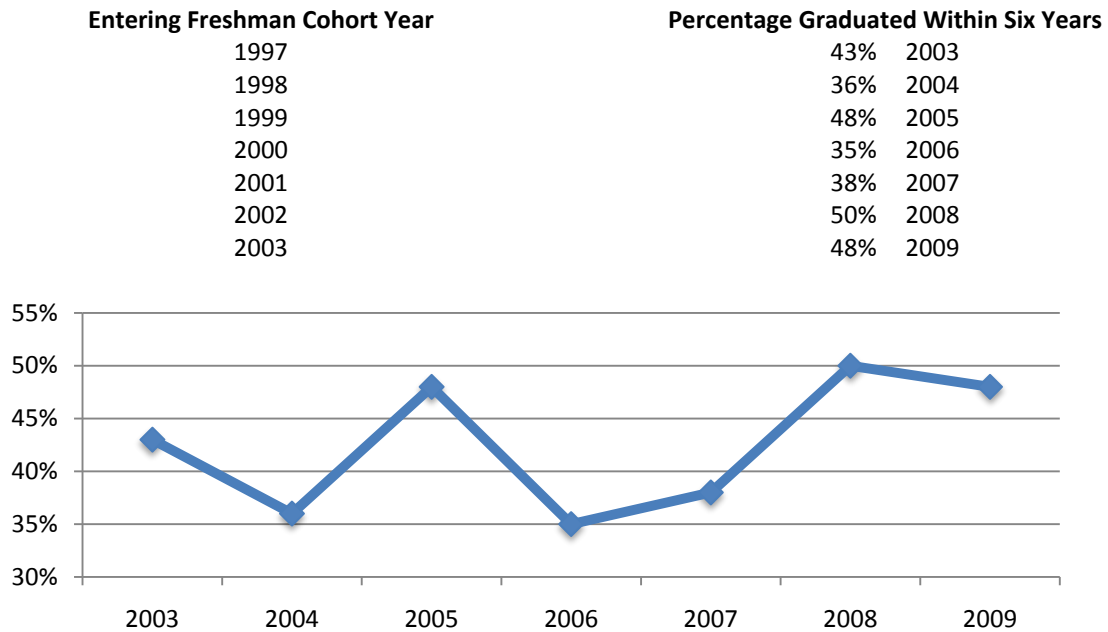
Retention and Graduation Rates

2004 – 2009

Retention Rates



Graduation Rates

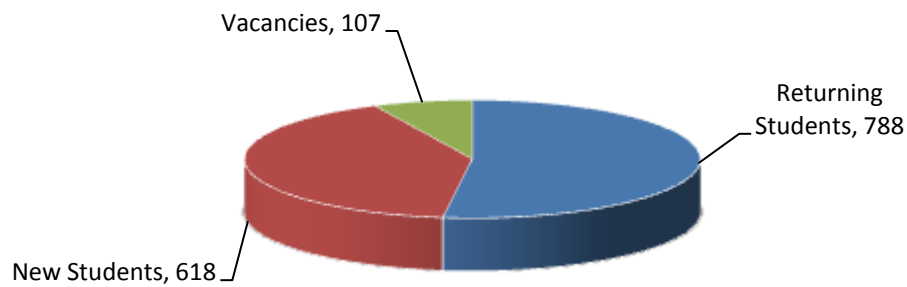


Residence Hall Housing

Fall 2009

<i>Residence Hall</i>	<i>Capacity</i>	<i>Returning Students</i>	<i>New Students</i>	<i>Total</i>	<i>Vacancies</i>
Bauer Hall	199	22	162	184	15
Destino Hall	256	197	57	254	2
Mira Lago	72	56	13	69	3
Buttercup	1	0	1	1	0
Valencia	56	41	13	54	2
Men's Total	584	316	246	562	22
Bethany Hall	180	22	134	156	24
South Pointe	108	56	38	94	14
Valencia	52	38	8	46	6
Esperanza	260	138	107	245	15
Buttercup	70	57	6	63	7
Aventura Hall	256	160	77	237	19
Women's Total	926	471	370	841	85
Graduate Buttercup	3	1	2	3	0
Total	1,513	788	618	1,406	107

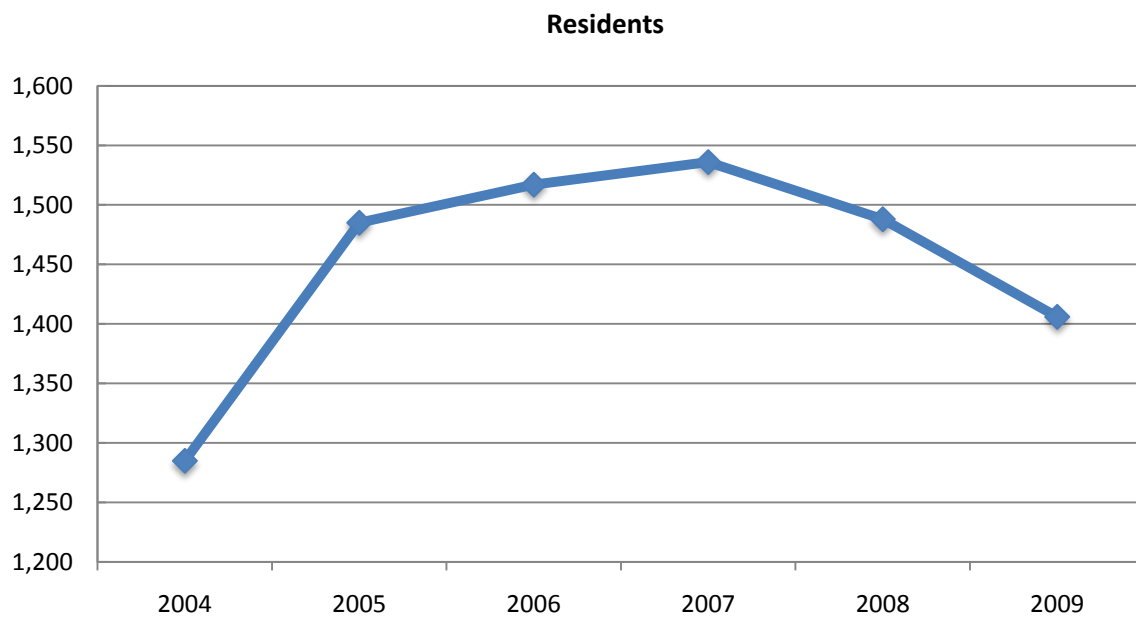
**Jerusalem students not reflected in these counts.*



Housing Capacity

Fall 2004 – Fall 2009

<i>Year</i>	<i>Residents</i>	<i>Growth</i>	<i>Capacity</i>	<i>Capacity %</i>
2004	1,285	18.4%	1,290	99.6%
2005	1,485	15.6%	1,495	99.3%
2006	1,517	2.2%	1,517	100.0%
2007	1,536	1.3%	1,551	99.0%
2008	1,488	-3.1%	1,556	95.6%
2009	1,406	-5.5%	1,513	92.9%



Library Resources

Fall 2009

Library Holdings

Books	76,971
Periodical titles	886
Compact discs	2,731
Videos	3,788

Online Resources

Full-text books	32,508
Full-text periodicals	29,645
Online databases	44
Checkouts last year	36,515

Computer Resources

Total number of computers available to all students	89
---	----

Sources of Revenue

Source	June 30th, 2009		June 30th, 2008	
Tuition and Fees	\$33,202,065	59.7%	\$32,035,553	69.0%
Gifts & Bequests	\$9,812,776	17.6%	\$9,502,295	20.5%
Sales of Auxiliary Services	\$12,286,335	22.1%	\$3,619,935	7.8%
Other Sources	\$306,777	<.1%	\$1,252,684	2.7%
Total Fund Revenues	\$55,607,953	100%	\$46,410,467	100%

Expenditures

Function	June 30th, 2009		June 30th, 2008	
Instructional	\$10, 594,062	23.4%	\$9,410,846	21.9%
Academic Support	\$2,463,107	5.4%	\$2,392,131	5.6%
Student Services	\$9,697,938	21.4%	\$9,517,647	22.1%
Institutional Support	\$8,631,912	19.1%	\$8,170,944	19.0%
Operation of Plant	\$2,496,746	5.5%	\$2,906,151	6.8%
Auxiliary Operations	\$11,393,024	25.2%	\$10,591,036	24.6%
			\$29,663	<.1%
Total Expenditures	\$45,276,789	100%	\$43,018,418	100%

The previously issued figures were unaudited. These corrected figures reflect the independent audit.

The 2008 Instructional, Instructional Support, and Auxiliary Expenses were adjusted by auditors from prior year audit reports.

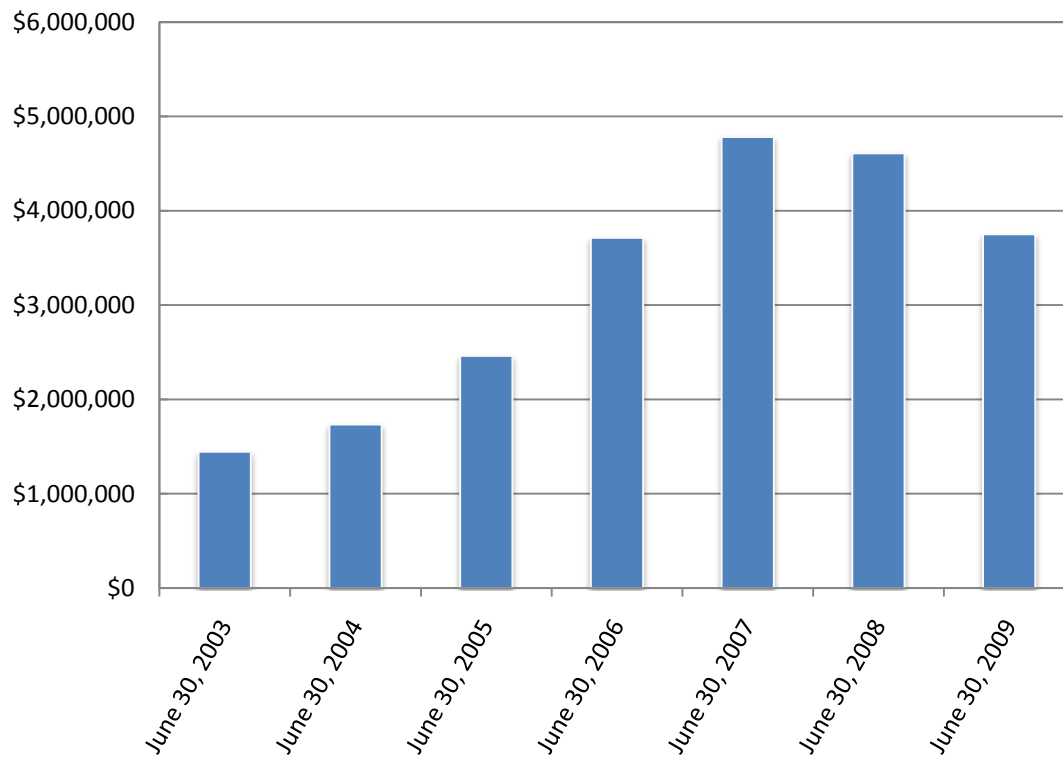
Corrected: January 4, 2010

Endowment Funds

2003 – 2009

<i>Endowment Funds</i>	
June 30, 2003	\$1,445,240
June 30, 2004	\$1,734,125
June 30, 2005	\$2,461,653
June 30, 2006	\$3,712,780
June 30, 2007	\$4,781,271
June 30, 2008	\$4,608,111
June 30, 2009	\$3,750,803

Endowment Funds



Notes



Southeastern University

*Office of Institutional Research & Retention
1000 Longfellow Blvd. Lakeland, FL 33801
Phone: 863.667.5933 Fax: 863.667.5200*