



FACT BOOK

2022-2023

I'M LAYING DOWN ALL THESE
FEARS YOU'RE NOT AFRAID OF

I'M LAYING DOWN ALL THESE
FEARS YOU'RE NOT AFRAID OF

I'M LAYING DOWN ALL THESE
FEARS YOU'RE NOT AFRAID OF

*Discover and Develop
Your Divine Design.*



Office of Institutional Research

Dr. Cody Lloyd

Vice President, Institutional
Research & Effectiveness, CIO
cjlloyd@seu.edu

Dr. Kenneth Reaves

Director, Research & Strategic Projects
kmreaves@seu.edu

Mrs. Jordan Kleinhenn

Director, Institutional Research
ljkleinhenn@seu.edu

Published in October 2022

© 2022 Southeastern University
1000 Longfellow Blvd.
Lakeland, Florida 33801

Table of Contents

Board of Trustees.....	2	Enrollment by Gender.....	58
Mission & Vision.....	3	Enrollment by Race & Ethnicity.....	60
Strategic Plan.....	4	Enrollment by State/U.S. Territory.....	62
History of Southeastern.....	5	International Enrollment.....	64
Points of Excellence.....	7	Enrollment by Denomination.....	66
Alumni Relations.....	8	Enrollment by AG District.....	68
Accreditation.....	10	Faculty Division & Rank.....	70
Institutional Memberships.....	11	Instructional Faculty.....	72
Organizational Charts.....	12	Instructional Faculty Demographics.....	74
Athletics.....	22	Student-to-Faculty Ratio.....	75
Clubs & Organizations.....	24	Faculty & Staff.....	76
Library & Computer Resources.....	25	New Students by Delivery Type.....	79
Missions.....	26	Applications for	
Tuition & Fees.....	28	Freshman Admission.....	80
Tuition, Room & Board Comparison.....	32	SAT, ACT & GPA for	
Financial Aid - New Undergraduates.....	34	Entering Freshmen.....	82
Academic Programs.....	37	Completions.....	84
SEU Network.....	42	Retention Rates.....	90
Honors Program.....	44	Graduation Rates.....	91
Enrollment by Delivery.....	46	On-Campus Enrollment.....	92
Enrollment by Major.....	48	Housing Capacity.....	93
Total Enrollment.....	54	Campus Housing.....	94
Full-Time Equivalency Enrollment.....	56		



Board of Trustees

Dr. Terry Raburn | Chairman

Dr. M. Wayne Blackburn | Vice Chairman

Rev. John Jordan | Secretary

Dr. Kent Ingle | University President

Rev. Tommy Barnett | University Chancellor

Rev. Abner Adorno

Rev. Roger Archer

Rev. Luke Barnett

Dr. Mark Batterson

Rev. Kenneth Draughon

Rev. Mark Jakelsky

Rev. Steve Mason

Rev. Ricardo Orsini

Dr. Jeffery Portmann

Mr. Matthew Potter

Rev. Judy Rachels

Rev. Ray Rachels

Dr. Terry Roberts

Dr. Gabriel Salguero

Rev. Robert Sandler

Mr. Scott Williams

Dr. Doug Witherup

Rev. John Wootton





Mission Statement

Equipping students to discover and develop their divine design to serve Christ and the world through Spirit-empowered life, learning and leadership.

Vision Statement

Southeastern University is anchored by Spirit-empowered education in a Christ-centered, student-focused learning community. Southeastern's global impact is marked by a deep commitment to transforming minds and engaging culture through the integration of faith, learning and service. Each student's divine design is nurtured and unleashed through the investment of faculty and staff, relationships within the community, the rigor of scholarship, diverse learning experiences and the discipline of spiritual formation, which propels students into a lifetime of serving the world in the Spirit of Christ.



Strategic Plan

Our Core Values

1. A university absolutely committed to Christ-like formation
2. A university of educational breadth and depth
3. A university of faculty distinction
4. A university that thinks globally
5. A university committed to serving human needs in our community and in communities around the world
6. A university characterized as a community of grace
7. A university that is student-focused at all times

Our Five-Year Plan

To create a university of curricular, co-curricular and experiential excellence with a faculty of distinction, diverse student population, strong financial base, and a culture of high performance and quality.



History of Southeastern University

Southeastern University was founded in 1935 by the Assemblies of God Alabama District Superintendent J.C. Thames and other Southeastern District leaders. Originally named the Alabama Shield of Faith Institute, it was renamed the South-Eastern Bible Institute (SEBI) in 1936. Guy Shields was the first president.

Originally located in a former high school building in New Brockton, Alabama, the school opened its doors to students on November 4, 1935, under the direction of four faculty members. Two years later, on May 22, 1937, the first graduation exercises were held. Seventeen students received diplomas for the two-year academic program.

SEBI continued classes in New Brockton until 1940 when a decision was made to consolidate the school with Beulah Heights Bible Institute in Atlanta, Georgia. The school was known from 1940 to 1942 as the Beulah Heights-South-Eastern Bible Institute. In the fall of 1942, Rev. Ralph Byrd allowed the school to relocate to his congregation at 301-7 Capital Ave., SW in Atlanta, where it then was once again named the South-Eastern Bible Institute.

In 1946, the board of directors voted to secure a permanent location for the full development of the school. A new campus location was purchased later that year in Lakeland, Florida. The Atlanta campus was sold, and development of the new site began. From 1946 to 1952, SEBI was located at the Lodwick School of Aeronautics in Lakeland. In 1952, the school moved to its present location at Longfellow Blvd.





Student body growth continued at the new central Florida campus along with the academic programs. SEBI became South-Eastern Bible College in 1956 when four-year Bachelor of Arts degree programs began. After adding education degrees, the college's board of directors changed the school name to Southeastern College of the Assemblies of God in 1977.

In 1986, Southeastern was granted regional accreditation by the Southern Association of Colleges and Schools Commission on Colleges. This accreditation was reaffirmed in 1991, 2001, 2011 and 2021.

In 2005, Southeastern College officially became Southeastern University, began offering its first master's degree programs and formed the Colleges of Arts & Sciences, Business, Christian Ministries & Religion, and Education. Since then, the university has also formed the Colleges of Behavioral & Social Sciences and Natural & Health Sciences and, in 2014, began offering doctoral programs.

What began in 1935 as a Bible-training school is now the largest Assemblies of God educational institution in America, producing future Christian leaders in the fields of church ministries, education, medicine, law, business, communication, psychology, social work, literature and music.



Points of Excellence

Partnership Growth

In the fall of 2021, Southeastern University announced two new initiatives that were fueled through key strategic partnerships: the Bob and Hazel Hoskins School of Mission and the Carrion Hispanic Leadership Center.

The Hoskins School of Mission is housed in the Barnett College of Ministry and Theology to prepare cross-cultural missional leaders for effective organizational and entrepreneurial leadership – both in the U.S. and internationally. The School of Mission features an undergraduate program and two master’s programs with mission-focused courses as a part of Southeastern’s partnership with OneHope.

In partnership with the National Latino Evangelical Coalition (NaLEC), Southeastern launched the Carrion Hispanic Leadership Center to encourage and create educational opportunities for Hispanic students, build relationships across the nation through partnerships with local churches, and fulfill the university’s mission of equipping students to discover and develop their divine design.

Funding

The Lilly Endowment Inc. awarded Southeastern a \$1 million grant as a part of its Pathways for Tomorrow Initiative. SEU was one out of 21 theological schools across the United States and Canada to be approved for a grant. The funds will be used to develop competency-based, contextualized graduate education for current and aspiring Hispanic and Latino ministers and pastors.

Enrollment Growth

Southeastern has once again been named one of the fastest growing private non-profit institutions in the country in the 2022-23 almanac released by the Chronicle of Higher Education (CHE). Based upon growth data acquired from the years 2010-2020, SEU has been ranked fourth among master’s level colleges and universities due to its 243.5% growth in enrollment.

Academic Programs

This new academic year has brought in a number of new programs offered across all delivery methods, including a Doctor of Missiology, a Master of Science in Nursing and a Bachelor of Science degree in Health Science and Business.



Alumni Relations

Scott Meehan '89 is a full-time middle school teacher and author. In his 25-year career in the U.S. military, Scott was involved with Cold War espionage and the capture of the former Iraqi dictator Saddam Hussein. He served as a Green Beret for the U.S. Special Forces, a Federal Bureau of Investigation (FBI) undercover agent and an Army officer.

Joseph “Joe” Lamb '96, '21 (MBA) is the owner and founder of RedVine Operations. Joe created RedVine to provide coaching, mentoring and strategic direction for Managed Service Providers (MSPs). He is also a facilitator for Connectwise Evolve, where he leads groups of eight to twelve business owners and service executives once a quarter to share practices, provide accountability and encouragement.

Lt. Holly Short '03 is a Fleet Marine Force Qualified Officer and the First Battalion Chaplain at the United States Naval Academy. She has been a Navy chaplain for eight years, where she has served the Marines, the Coast Guard and the Construction Battalion (Navy Seabees). Holly has also received the Navy Commendation Medal.

Matias Perttula '13 (MBA) is an advocacy director at International Christian Concern (ICC), the largest non-governmental advocacy group for persecuted Christians around the world. He oversees government relations, meets with members of Congress and advocates for Christians who have been imprisoned because of their faith. Matias's wife, **Barbarah (Reynolds) '15**, is a full-time wedding photographer and entrepreneur. Her work has been featured in Brides Magazine and her business, Suvi Baby, recently launched its first product on Amazon.

Joshua Comins '19 is an associate editor at Fox News in New York City, N.Y. In 2019, he took an internship in Washington, D.C., working with White House photographers in the Office of Management Administration during the Trump Administration.

Tiffany (Hammer) Hudson '17 is a member of Elevation Worship and worship leader at Elevation Church. She recently attended the Grammy Awards for her work with Elevation in winning Best Contemporary Christian Music Album on their collaborative album with Maverick City Music, “Old Church Basement.”



Two issues of the Southeastern Alumni Magazine were produced in the Winter and Summer of 2022. These issues highlighted alumni such as:

Krista Rogers '16, '17 (MBA), media asset manager for Disney Institute and National Geographic Live and chair for Disney Emerging Professionals.

Sam Simon '20, keyboard player and Hammond B3 organist for Maverick City Music.

Joy Bishara '21, '22 (MSW) and **Lydia Pogu '21, '22 (M.A.)**, international human rights activists and speakers.

Elena Espinoza '20, founder of Step Out of the Harbor, graduate assistant and photographer for student development marketing.

Devon Ford '20, '22 (MBA), Fire basketball team member and student activist.

Pat Clary '22 (Ph.D.), International Leadership Association (ILA) Public Leadership Community chair and presenter.

Graduates to Date by College

Business, Communication & Leadership	4,615
Education	4,403
Ministry & Theology	7,337
Natural & Health Sciences	756
School of Music	578
Social Sciences & Humanities	4,020
Total Graduates	21,709



Accreditation

Southeastern University is accredited by the **Southern Association of Colleges and Schools Commission on Colleges** to award associate, baccalaureate, masters, and doctorate degrees.

Contact the Commission on Colleges at 1866 Southern Lane, Decatur, GA 30033-4097 or call 404-679-4500 for questions about the accreditation of Southeastern University.

Other discipline-specific accreditations and licensures:

- Council on Social Work Education (CSWE)
- Accreditation Council for Business Schools and Programs (ACBSP)
- Florida Department of Education (FLDOE) – *Southeastern University is approved to grant degrees that meet certification requirements for a Florida teaching credential.*
- Commission on Collegiate Nursing Education (CCNE)
- Association of Theological Schools (ATS)



Institutional Memberships

American Association of Collegiate Registrars
and Admissions Officers (AACRAO)

American Society of Composers, Authors and
Publishers (ASCAP)

The Alliance for Assemblies of God Higher Education
(The Alliance)

Association For Biblical Higher Education (ABHE)

Association of Christian Schools International (ACSI)

Broadcast Music Inc. (BMI)

Council for Christian Colleges and Universities (CCCU)

Council of Independent Colleges (CIC)

Council on Higher Education Accreditation (CHEA)

Florida Association of Colleges for Teacher
Education (FACTE)

Florida League of Christian Schools (FLOCS)

Hispanic Association of Colleges and Universities (HACU)

Independent Colleges and Universities of Florida (ICUF)

National Association of Intercollegiate Athletes (NAIA)

National Association of Independent Colleges and
Universities (NAICU)

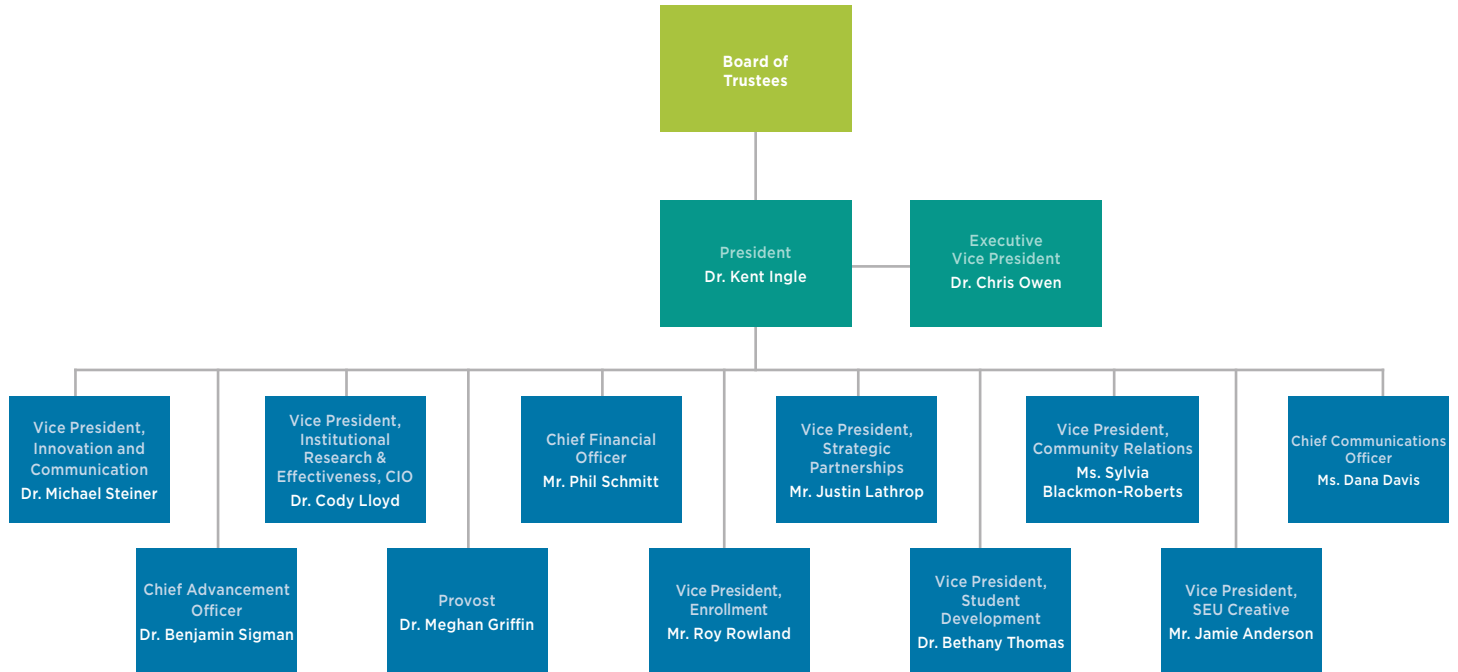
National Collegiate Honors Council (NCHC)

Polk Arts Alliance

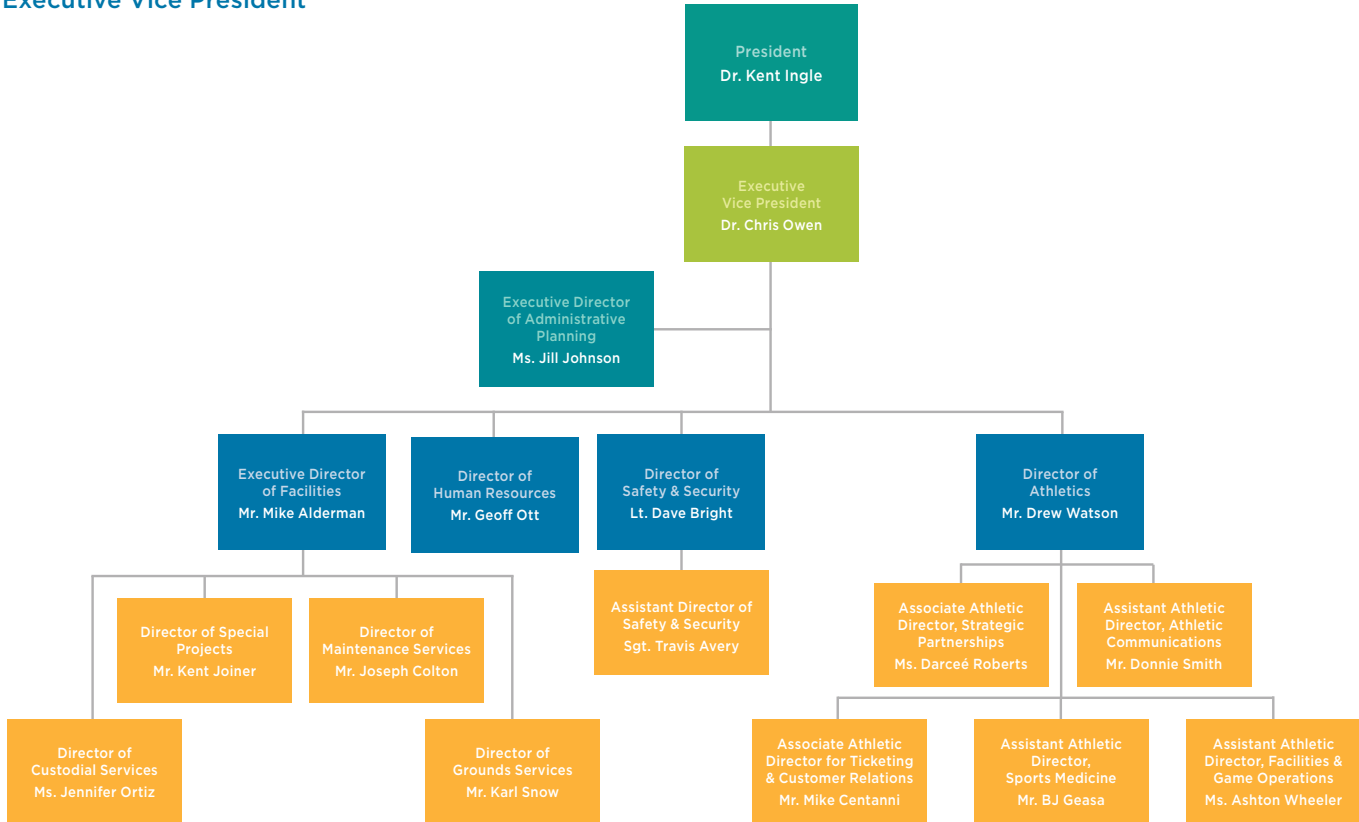


Organizational Charts

Board of Trustees & Leadership Team

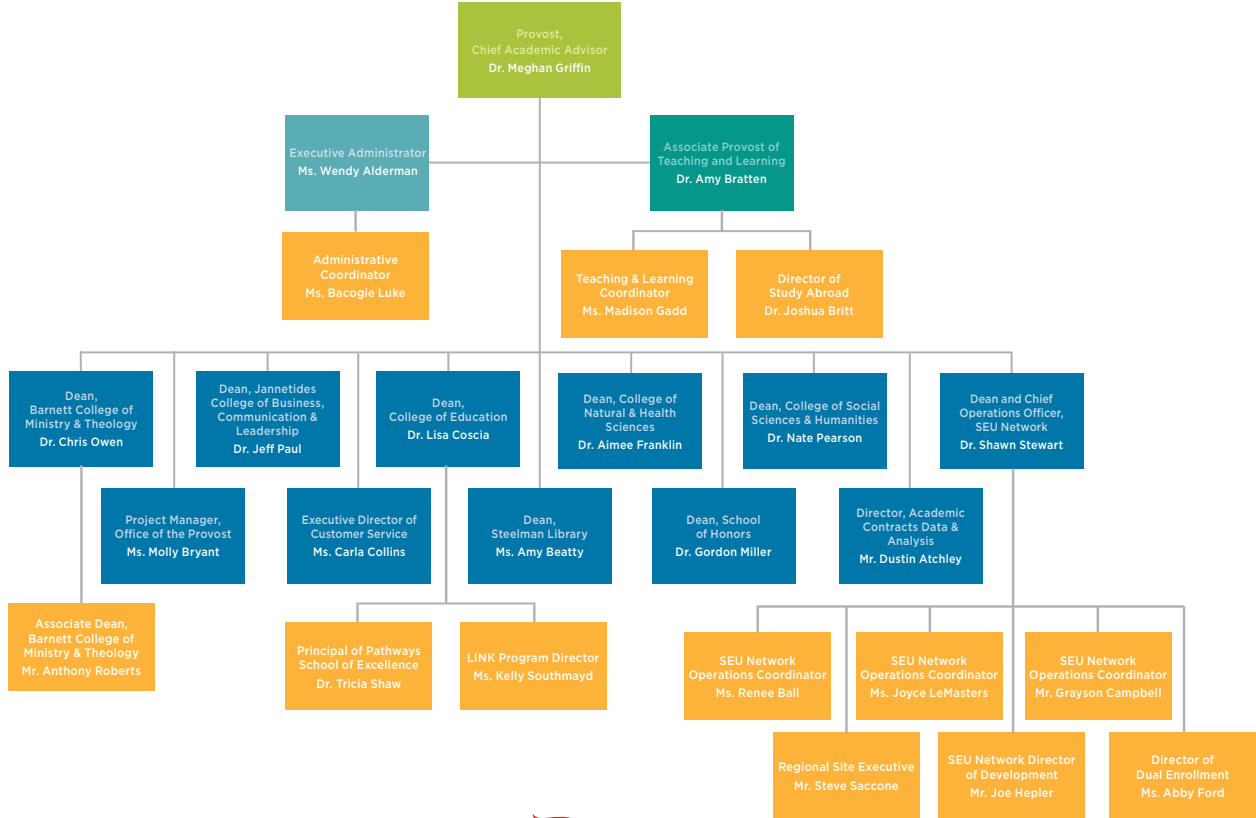


Executive Vice President

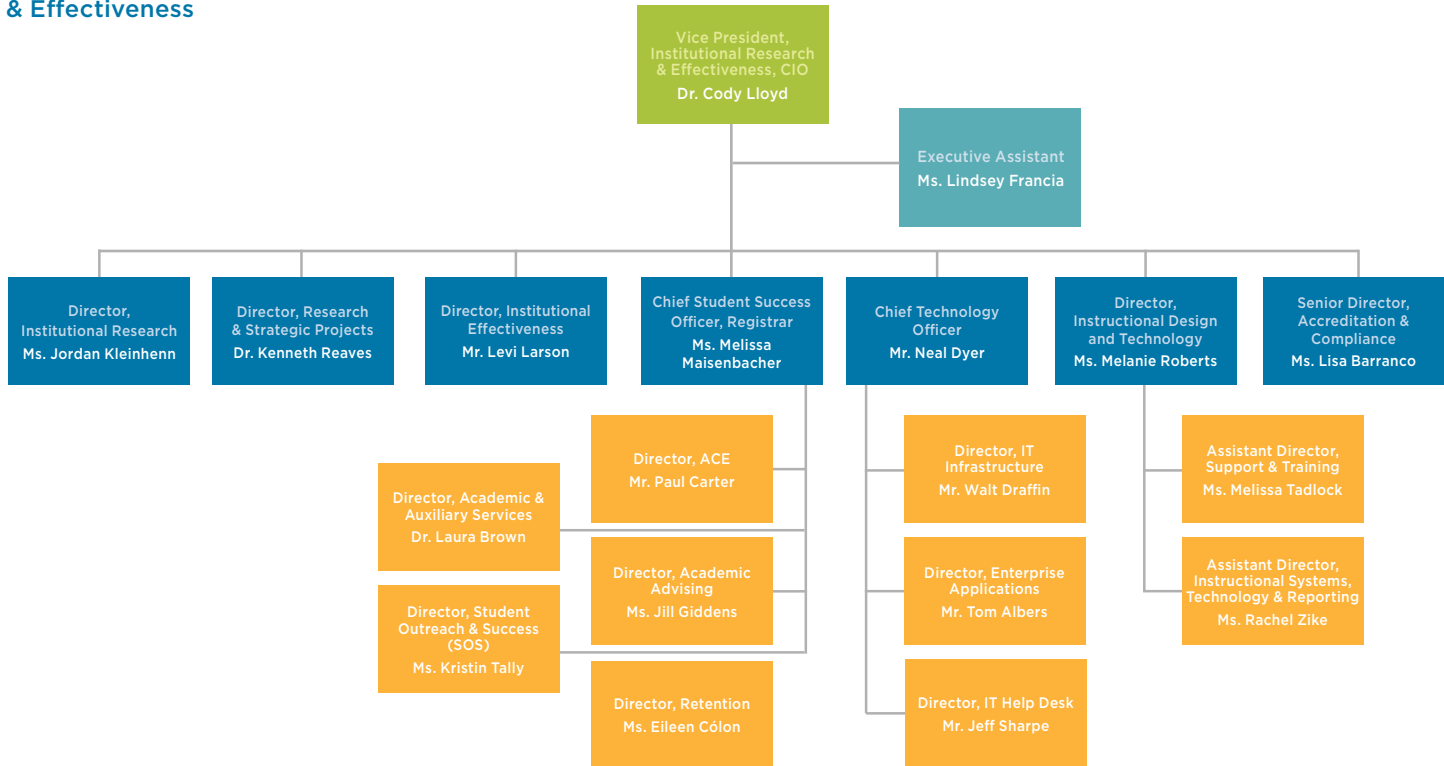


Organizational Charts

Provost

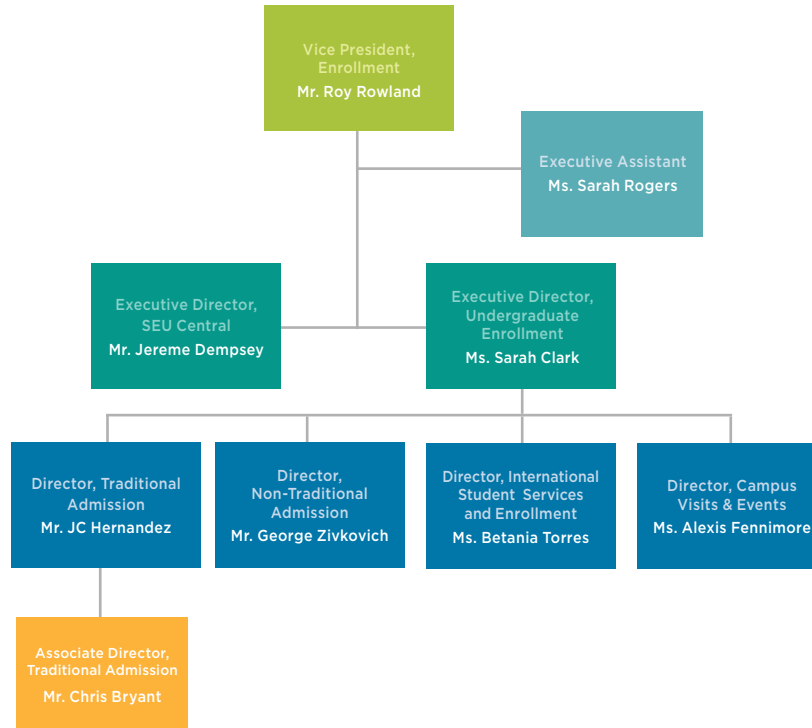


Institutional Research & Effectiveness



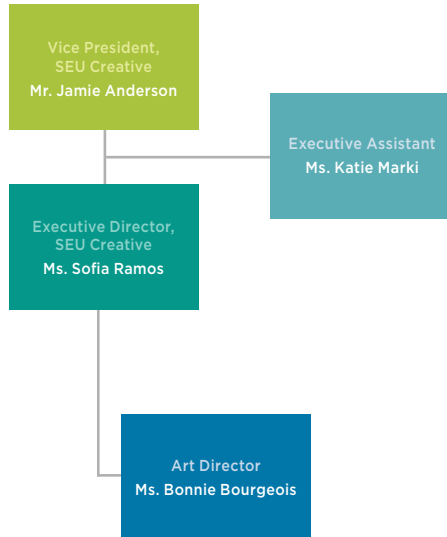
Organizational Charts

Enrollment

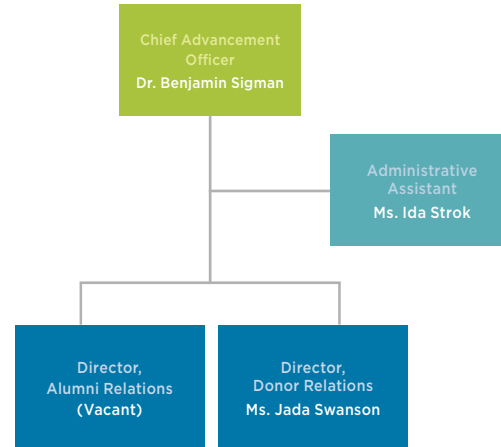


Organizational Charts

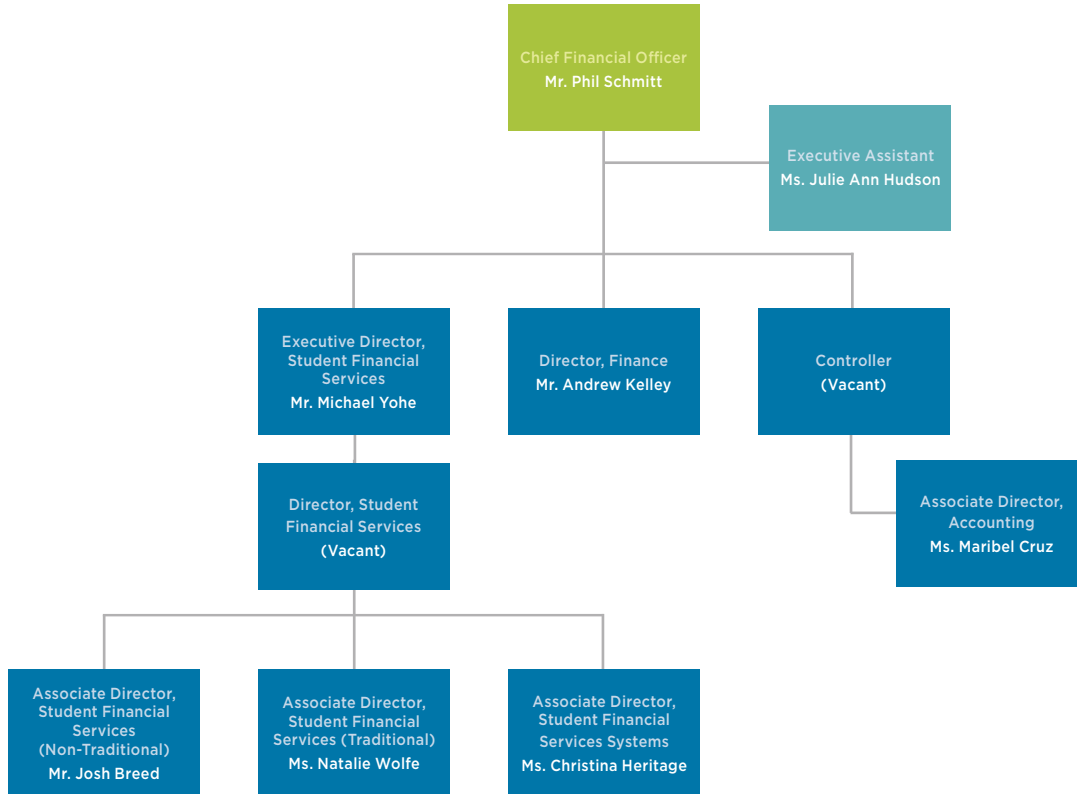
SEU Creative



Office of University Advancement

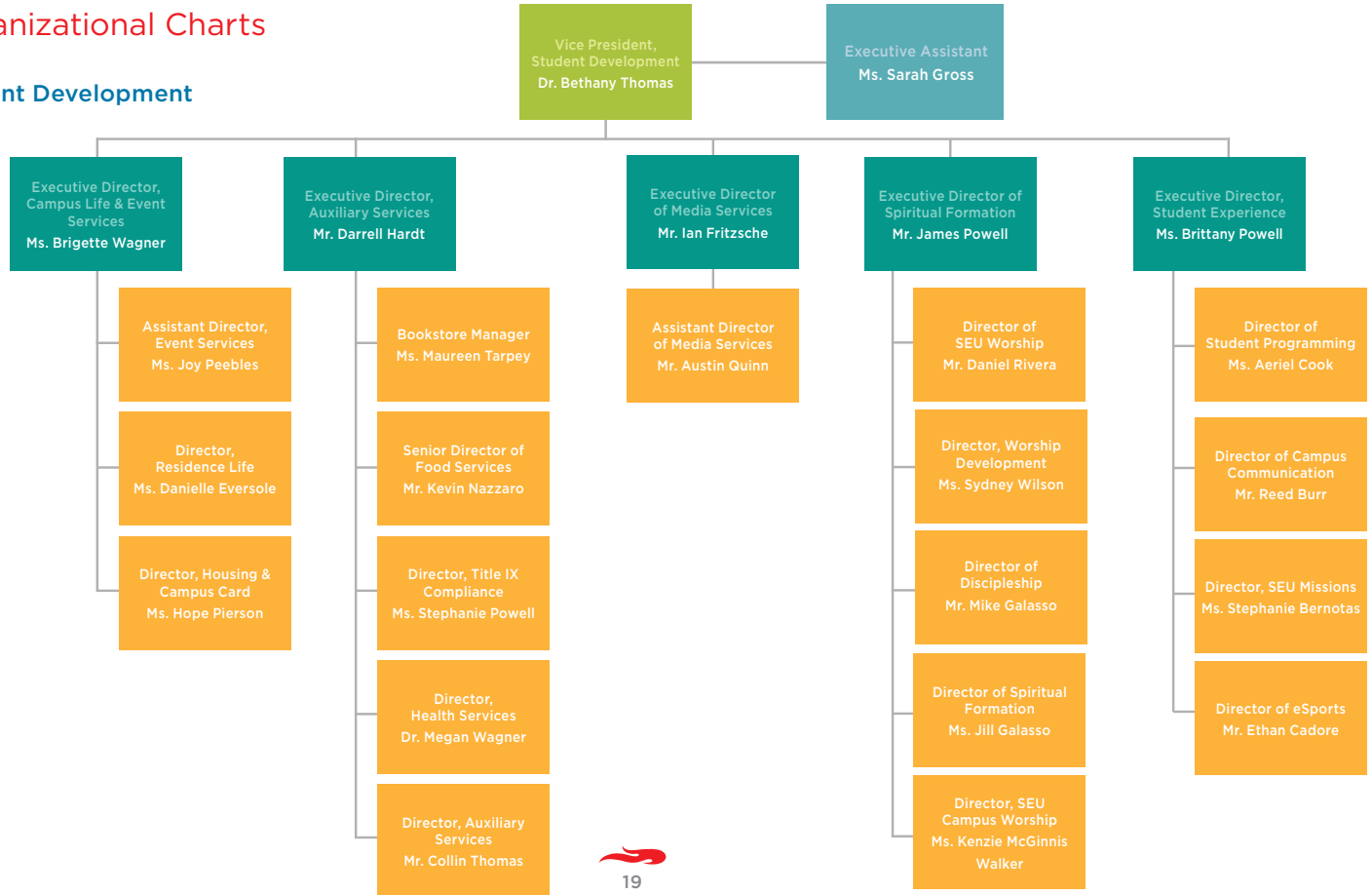


Finance



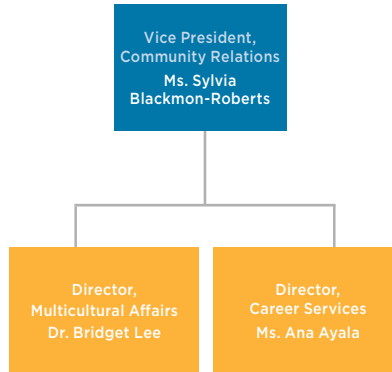
Organizational Charts

Student Development



Organizational Charts

Community Relations





Athletics

Southeastern University is a member of the National Association of Intercollegiate Athletics (NAIA) and competes in The Sun Conference and the Mid-South Conference.

Varsity Sports

Men's Programs

Baseball
Basketball
Cross Country
Football
Golf
Soccer
Tennis
Track and Field
Wrestling

Women's Programs

Basketball
Beach Volleyball
Cross Country
Golf
Soccer
Softball
Tennis
Track and Field
Volleyball

Intramural Sports

Basketball
Flag Football
Indoor Soccer
Powder Puff Football
Sand Volleyball
Soccer
Softball
Ultimate Frisbee



Athletic News

Unprecedented success during the spring helped Southeastern University have one of its best competition years in program history.

The Fire claimed their third consecutive Sun Conference Commissioner's Cup and posted a fifth-place finish in the Learfield IMG College Directors' Cup which is based on NAIA National Championship finishes for their highest ranking ever.

SEU baseball won its second national championship and posted an incredible 59-4 season record which marked the fewest losses by an NAIA National Championship baseball team since 1965. During the World Series, the Fire had to rally back in its first game to beat the defending champions, won in extra innings against No. 2 Tennessee Wesleyan and defeated 19-time champion Lewis-Clark State in the winner-take-all game by the score of 11-5.

Individually, Gage Braun became the third Fire wrestler in program history to win a national championship claiming the 285-pound title by securing three pins and a technical fall to make the championship match which he won on an escape at the buzzer.

Glenn Rodgers became the first male individual national champion in track and field in school history by winning the 110 Hurdles in a program-record time of 13.83. The Fire racked up 20 points in the event with Davonte Vanterpool third and Darion Carter fifth to help Southeastern to a second-place finish in the team standings.

The Fire softball team posted a fourth-place finish at the NAIA Softball World Series, winning the Lawrenceville Bracket of the opening round and advancing to the World Series for the first time since 2016. SEU knocked off its conference rival Webber International in its first game at the tournament on a walk-off home run by Haleigh Harrell and defeated Oregon Tech and Indiana Wesleyan in a



one-run and two-run game, respectively. The season ended in extra innings in a 2-1 loss to Science and Arts.

Women's basketball advanced to the national semifinal for the second time in program history and finished the season with a 33-2 overall record.

For the first time in program history, both Fire tennis teams made the national tournament, and both won their first match, highlighted by a thrilling 4-3 win by the men's team over No. 20 Reinhardt which came down to the final match that went into a tiebreaker and was won by Enrique Martinez, 7-1.

In all, the Fire won 11 Sun Conference championships. The women's golf team won the conference title for the first time in program history coming back from a two-shot deficit heading into the final day of play to upset second-ranked Keiser by two shots.

A total of 201 SEU athletes were named to an all-conference team with 59 All-Americans, 113 Academic All-Conference selections, and eight conference Champions of Character honorees.



Clubs & Organizations

ACS
Alpha Phi Sigma
Art and Design Club
Campus Outreach
Christian Veterinary Fellowship
CKI
COMM Club
Communication Sciences Disorder Club
Delight Ministries
Enactus
Herodotus Society
Hospitality for the Homeless
Jiu-Jitsu

Joe's Way Weightlifting Club
Kappa Delta Pi
Kappa Mu Epsilon National Mathematics
Honor Society
NAfME
NSSLHA
Poetry Club
PR Club
Pre-Dental Waxing Club
Pre-Health Service Organization (PHSO)
Psi Chi International Honor Society
SEU Aviators
SEU Debate

SEU Mock Trial
Social Advocacy Club
Soul Food
Student Christian Medical and Dental
Association
Student Theology Club
Students for Life
The Paperback Collective
The Phoebe Society
Turning Point USA
Unpland Improv



Library & Computer Resources

Library provides access to:

Books (Print)	79,510
Videos	4,973
eBooks	294,139
Online Videos	143
eNewspapers	329
Other	4,067
Total	385,444

Computers

Total number of computers available to all students	84
---	----

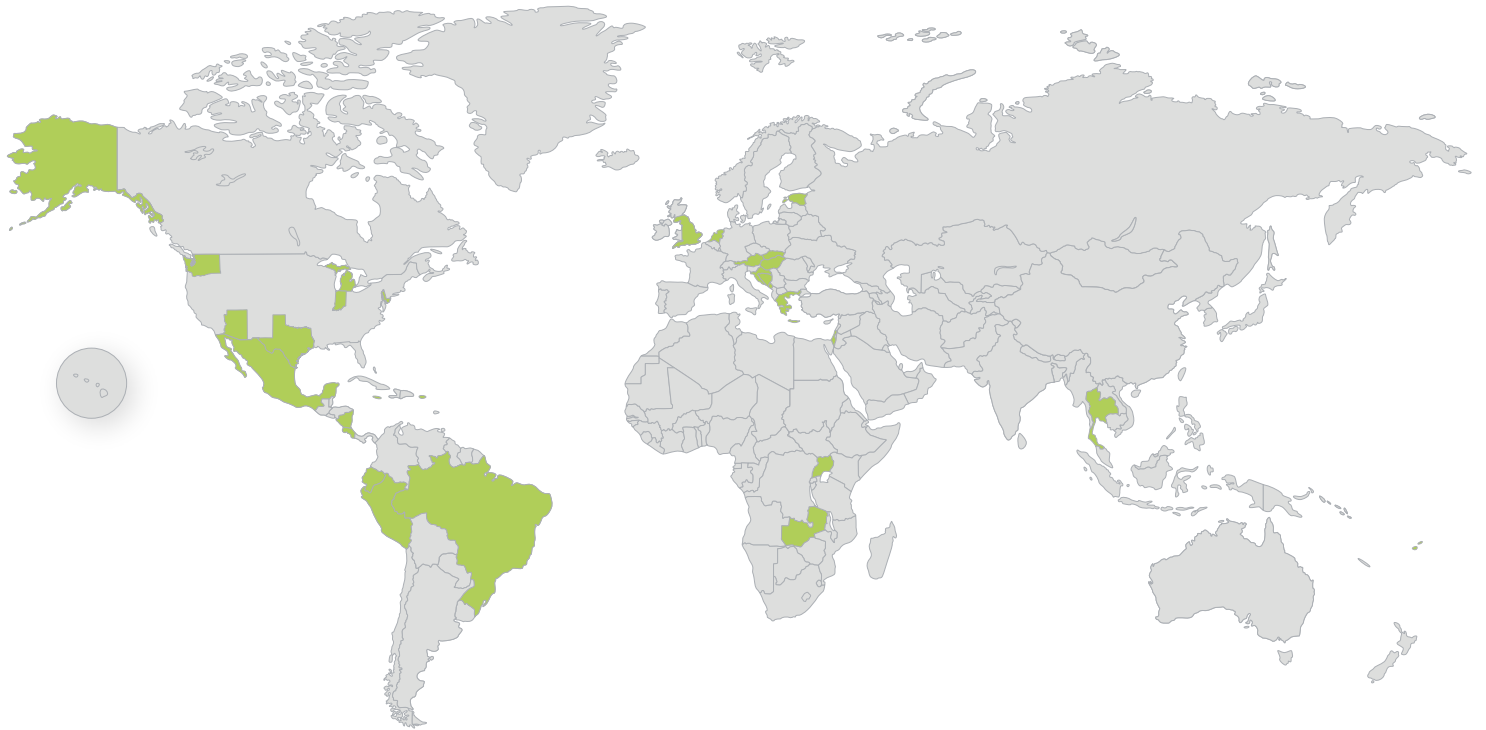


Missions

During the 2021-2022 academic year, SEU Missions, Southeastern's missions department, sent 300 students on 29 trips both here in the United States and all around the world.

Alaska	Hungary	Slovakia
Arizona	Indiana	Texas
Austria	Israel	Thailand
Bosnia	Jamaica	Uganda
Brazil	Maryland	Washington
Costa Rica	Mexico	Zambia
Croatia	Michigan	
Ecuador	Montenegro	
England	Netherlands	
Estonia	Nicaragua	
Fiji	Peru	
Greece	Puerto Rico	





Undergraduate Tuition & Fees for 2022-2023

Tuition	Semester	Year
12-17 Credit Hours	\$14,424	\$28,848
Hourly Tuition (<i>under 12 or over 17 credit hours</i>)	\$1,202	\$1,202
General Student Fee	\$650	\$1,300
Total for Off-Campus	\$15,074	\$30,148

Residence Halls

Traditional Student Housing	\$2,710	\$5,420
Traditional Student Housing (<i>private room</i>)	\$3,069	\$6,138



Meal Plans	Semester	Year
21-Meals-per-Week Plan <i>(includes \$200 in Fire Funds)</i>	\$2,655	\$5,310
14-Meals-per-Week Plan <i>(includes \$250 in Fire Funds)</i>	\$2,530	\$5,060
10-Meals-per-Week Plan <i>(includes \$275 in Fire Funds)</i>	\$2,361	\$4,722
Commuter Meal Plans:		
25-Meals-per-Semester Plan <i>(includes \$250 in Fire Funds)</i>	\$516	\$1,032
15-Meals-per-Semester Plan <i>(includes \$150 in Fire Funds)</i>	\$308	\$616
10-Meals-per-Semester Plan <i>(includes \$125 in Fire Funds)</i>	\$235	\$470
Room and Meal Plan*	\$5,240	\$10,480
Total for On-Campus*	\$20,314	\$40,628

**Based on 12-17 credit hours; traditional student housing and 14-meal plan*

Other Estimated Expenses

Books and Supplies	\$1,600
Miscellaneous <i>(transportation, laundry, entertainment, etc.)</i>	\$4,080



Graduate Tuition & Fees for 2022-2023

Program	Tuition/Hr	Credit Hours	Total Tuition
Doctor of Education	\$500	54	\$27,000
Doctorate in Strategic Leadership	\$795	60	\$47,700
Doctor of Ministry	\$500	36	\$18,000
MA in the Art of Biblical Studies	\$495	48	\$23,760
MA in the Art of Design Management	\$525	36	\$18,900
MA in the Art of Family Ministry	\$495	36	\$17,820
MA in Human Services	\$495	36	\$17,820
MA in International Community Development	\$495	36	\$17,820
MA in Leadership	\$495	36	\$17,820
MA in Ministerial Leadership	\$495	36	\$17,820
MA in Ministerial Leadership – Executive Track	\$525	36	\$19,080
MA in Theological Studies	\$495	36	\$17,820
Master of Business Administration (MBA)	\$525	36	\$18,900
MBA (Global Program)	N/A	36	\$27,000



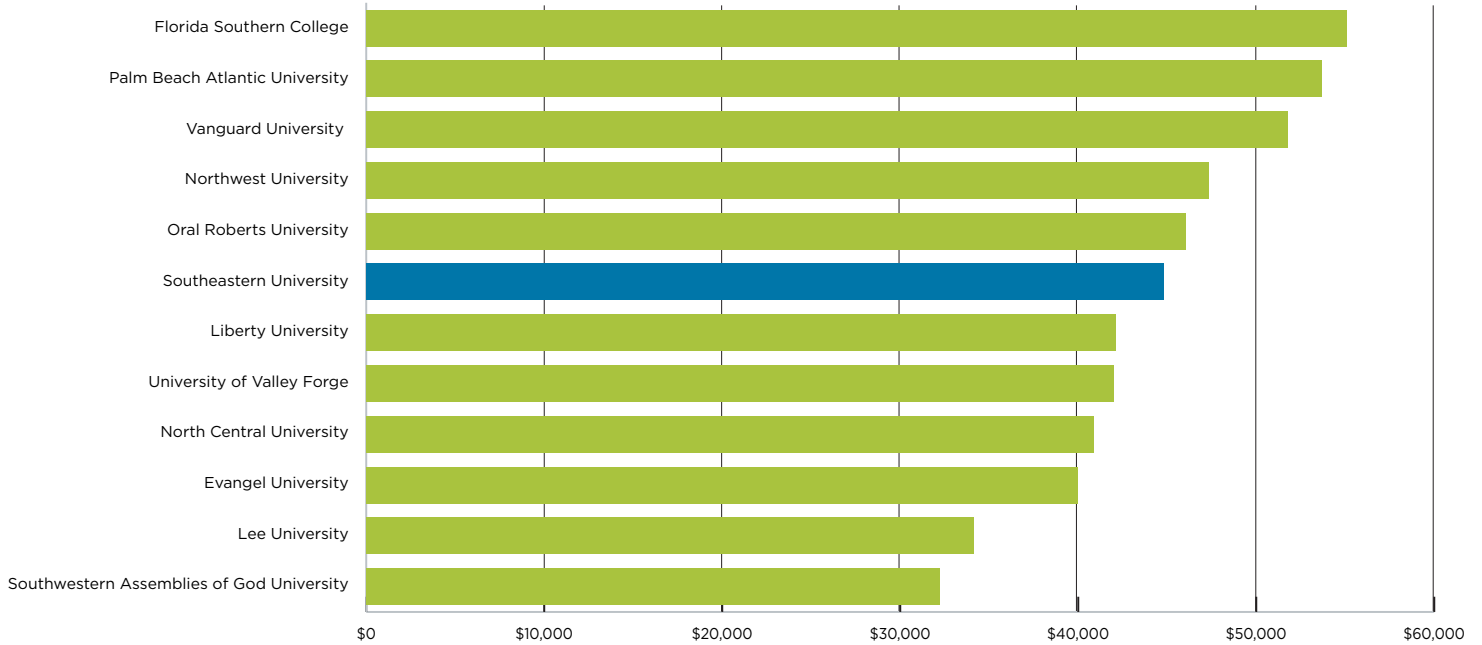
Program	Tuition/Hr	Credit Hours	Total Tuition
Master of Divinity (MDiv)	\$495	72	\$35,640
MEd in Elementary Education	\$375	33	\$12,375
MEd - All Other Programs	\$375	36	\$13,500
MS in Kinesiology	\$450	33	\$14,850
MS in Nursing	\$595	32	\$19,040
MS in Pastoral Care and Counseling	\$495	36	\$17,820
MS in Professional Counseling	\$525	60	\$31,500
Master of Social Work	\$515	65	\$33,475
MS in Marriage & Family Counseling	\$525	60	\$31,500
PhD in Organizational Leadership	\$795	60	\$47,700
Annual General Student Services Fee	\$350		
Doctoral Writing Fee	\$200 per semester		
Doctoral Education Fee	\$200 per semester		



Tuition, Room & Board Comparison for 2021-2022

School	Assemblies of God	Annual Cost
Florida Southern College		\$55,100
Palm Beach Atlantic University		\$53,668
Vanguard University	(AG)	\$51,770
Northwest University	(AG)	\$47,320
Oral Roberts University		\$46,034
Southeastern University	(AG)	\$44,814
Liberty University		\$42,114
University of Valley Forge	(AG)	\$41,984
North Central University	(AG)	\$40,855
Evangel University	(AG)	\$39,977
Lee University		\$34,120
Southwestern Assemblies of God University	(AG)	\$32,224





Financial Aid for New Traditional Undergraduate Students

	2016	2017	2018	2019	2020	2021	2022
Percent Receiving Any Financial Aid	99%	100%	100%	100%	100%	100%	100%
Percent Receiving Federal Grants	90%	85%	82%	76%	78%	84%	90%
Average Amount of Federal Grants	\$16,404	\$14,882	\$13,774	\$15,134	\$12,421	\$11,197	\$11,431
Percent Receiving State/Local Grants	60%	59%	64%	63%	59%	56%	55%
Average Amount of State/Local Grants	\$3,440	\$4,299	\$4,666	\$4,271	\$4,327	\$4,187	\$3,406
Percent Receiving Institutional Grants	98%	98%	99%	99%	100%	100%	100%
Average Amount of Institutional Grants	\$10,767	\$12,015	\$13,070	\$14,280	\$14,701	\$16,109	\$17,474
Percent Receiving Student Loans	89%	82%	78%	70%	73%	82%	88%
Average Amount of Student Loans	\$15,124	\$14,000	\$12,587	\$14,018	\$11,635	\$11,008	\$11,280



Financial Aid for All Other New Undergraduate Students

	2016	2017	2018	2019	2020	2021	2022
Percent Receiving Any Financial Aid	96%	94%	95%	96%	95%	94%	87%
Percent Receiving Federal Grants	87%	80%	79%	82%	83%	78%	81%
Average Amount of Federal Grants	\$10,513	\$10,986	\$10,907	\$9,351	\$9,142	\$9,061	\$10,335
Percent Receiving State/Local Grants	28%	23%	26%	24%	25%	29%	25%
Average Amount of State/Local Grants	\$2,763	\$3,320	\$3,586	\$2,998	\$3,131	\$2,986	\$2,383
Percent Receiving Institutional Grants	60%	67%	73%	73%	73%	74%	17%*
Average Amount of Institutional Grants	\$1,233	\$1,704	\$1,779	\$1,781	\$1,849	\$2,255	\$2,179
Percent Receiving Student Loans	84%	75%	74%	77%	80%	71%	80%
Average Amount of Student Loans	\$8,271	\$9,282	\$8,990	\$7,531	\$7,260	\$7,350	\$7,705

**Starting in 2022, practicum changed from being awarded as aid to being processed as a reduced bill amount.*





Academic Programs

Barnett College of Ministry & Theology

Ministry & Theology

ASSOCIATES

- ACM Christian Ministry
- AML Ministerial Leadership
- AWM Worship Ministries

BACHELORS

- BA Intercultural Studies
- BA Ministerial & Theological Studies
- BA Multidisciplinary Studies
- BS Christian Ministry
- BS Ministerial Leadership
- BS Ministry with Concentration

CERTIFICATE UNDERGRAD

- Life Church Leadership
- Orange Family Ministry
- Practical Ministries

School of Divinity

MASTERS

- MA Biblical Studies
- MA Family Ministry
- MA Master of Theology
- MA Ministerial Leadership with Concentration
- MA Theological Studies
- MDIV Master of Divinity

DOCTORATE

- DMIN Doctor of Ministry

CERTIFICATE GRADUATE

- Practical Ministries

The Bob & Hazel Hoskins School of Mission

BACHELORS

- BS Ministerial Leadership

MASTERS

- MA Global Ministry Design
- MA International Family Ministry

DOCTORATE

- DMISS Doctor of Missiology

CERTIFICATE UNDERGRAD

- Advocacy in Global Contexts
- Biblical Disaster Response
- Global Perspectives of Relief

CERTIFICATE GRADUATE

- Global Ministry Design
- International Family Ministry



College of Education

Educator Preparation and Leadership, Undergrad

BACHELORS

- BS Early Childhood Education
- BS Elementary Education
- BS Global Education Studies
- BS Secondary Biology
- BS Secondary English
- BS Secondary Mathematics
- BS Secondary Social Sciences
- BS/MEd Exceptional Student Education

CERTIFICATE UNDERGRAD

- Adaptive Physical Education
- Deaf Studies
- Serving Individuals with Disabilities

Educator Preparation and Leadership, Graduate

MASTERS

- MEd Educational Leadership
- MEd Educational Therapy
- MEd Elementary Education
- MEd Exceptional Student Education
- MEd Literacy Education
- MEd Teaching English to Speakers of Other Languages

DOCTORATE

- EdD Curriculum & Instruction

EdD Organizational Leadership

CERTIFICATE GRADUATE

- Dyslexia Education

LINK

CERTIFICATE UNDERGRAD

- Comp. Post. Sec. Transition

College of Natural & Health Sciences

Kinesiology

BACHELORS

- BS Kinesiology

MASTERS

- MS Kinesiology

Mathematics

BACHELORS

- BS Mathematics

Natural Sciences

BACHELORS

- BS Biochemistry
- BS Biology with Concentration
- BS Communication Sciences & Disorders
- BS General Biology
- BS Health Science & Business



Nursing

BACHELORS

BS Nursing

MASTERS

MS Nursing

College of Social Sciences & Humanities

Counseling, Psychology, and Human Services

BACHELORS

BA Humanitarian Compassion

BS Human Services

BS Interdisciplinary Studies

BS Psychological Sciences

BS Psychology

MASTERS

MA Human Services

MA International Community Development

MS Pastoral Care & Counseling

MS Professional Counseling

CERTIFICATE UNDERGRAD

Racial Reconciliation

CERTIFICATE GRADUATE

Human Services Administration

Human Services Children & Family

Humanities & Foundational Core

ASSOCIATES

AA General Education

BACHELORS

BA Historical & Literary Studies

BA Language, Culture, & Trade

BA/BS General Studies

BFA Creative Writing

BS Political Science

CERTIFICATE UNDERGRAD

Political Leadership

TESOL Certificate

Social Work and Criminal Justice

BACHELORS

BS Criminal Justice

BSW Social Work

MASTERS

MSW Master of Social Work

CERTIFICATE UNDERGRAD

Child Welfare



Jannetides College of Business, Communication & Leadership

Business

BACHELORS

- BBA Business Administration
- BS Accounting
- BS Business & Professional Leadership
- BS Business Studies
- BS Finance
- BS International Business
- BS Legal Studies
- BS Management
- BS Marketing

Communication, Arts, and Design

BACHELORS

- BA Visual Arts
- BA/BS Communication with Concentration
- BA/BS Film Production
- BA/BS Graphic Design
- BS Communication & Mass Media
- BS Digital Design & Production with Concentration
- BS Digital Media & Design with Concentration

MASTERS

- MA Art of Design Management

Graduate Studies

MASTERS

- MA Leadership with Concentration
- MBA Master of Business Administration

DOCTORATE

- DSL Strategic Leadership
- PhD Organizational Leadership

Professional Studies

ASSOCIATES

- AAS Professional Pilot

BACHELORS

- BS Aviation Management: Professional Pilot
- BS Business & Professional Leadership: Professional Pilot
- BS Organizational Leadership
- BS Sport Management with Concentration
- BS Tourism & Hospitality Management

CERTIFICATE UNDERGRAD

- Organizational Leadership

CERTIFICATE GRADUATE

- Leadership: Entrepreneurship
- Leadership: Non-Profit
- Organizational Leadership



School of Music

Music

BACHELORS

- BA Music
- BME Music Education
- BS Commercial Music
- BS Worship Studies

CERTIFICATE UNDERGRAD

- Instrumental Performance
- Piano Performance
- Vocal Performance

Steelman Library

BACHELORS

- BA Humanities with Concentration

Classical Studies

ASSOCIATES

- AA General Studies

MASTERS

- MA Classical Studies with Concentration



Dual Enrollment

Statistics

39 High Schools **2,544** Students

SEU Network

Statistics

150 Sites **29** Regional Campuses and High Impact Sites

42 States **1,954** Undergraduates **269** Graduates **1,273** Non-Degree

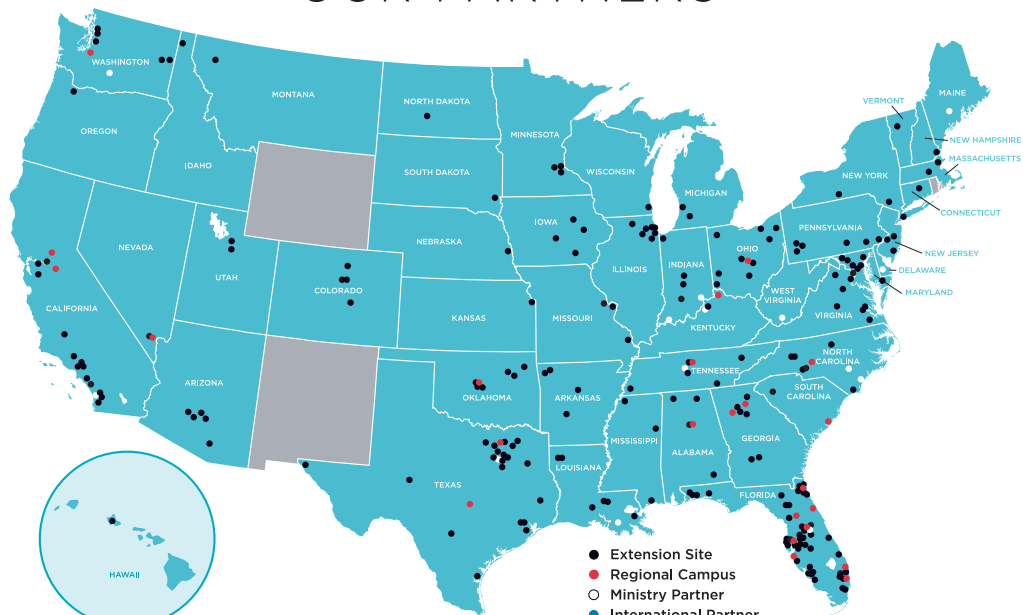
High Impact Sites/Partnerships

7 Hills Church, Florence, KY
Bayside Community Church, Bradenton, FL
Calvary Christian Center, Ormond Beach, FL
Celebration Church, Georgetown, TX
Celebration Church, Jacksonville, FL
Central Christian Church, Henderson, NV
Christ Fellowship, Palm Beach Gardens, FL
Christian Life Center, Fort Lauderdale, FL
Classical Conversations Plus, Southern Pines, NC
Dream City Church, Phoenix, AZ
EDiGlobal, Arlington, TX
Faith Assembly of God, Orlando, FL
Free Chapel, Gainesville, GA
Grace Family Church, Lutz, FL

Highlands College, Birmingham, AL
Hope Fellowship, Frisco, TX
Meadowbrook Church, Ocala, FL
Motion Church, Puyallup, WA
Multiply Church (SEU Carolina), Concord, NC
New Life Church, Conway, AR
Ohio Network Campus, Columbus, OH
Seacoast Church, Mount Pleasant, SC
The Belonging Co, Franklin, TN
The Church at Chapelhill, Douglasville, GA
The Gate Church, Oklahoma City, OK
The House Modesto, Modesto, CA
Thriving Churches Int'l, Roseville, CA
Valley Creek Church, Flower Mound, TX
Vous Church, Miami, FL



OUR PARTNERS





Honors Program

Semester GPA

2014		2015		2016		2017		2018		2019		2020		2021	
Fall	Spring	Fall	Spring	Fall	Spring	Fall	Spring	Fall	Spring	Fall	Spring	Fall	Spring	Fall	
3.89	3.87	3.86	3.85	3.74	3.77	3.82	3.82	3.81	3.79	3.79	3.81	3.84	3.82	3.81	



Yearly GPA

2015-2016	2016-2017	2017-2018	2018-2019	2019-2020	2020-2021	2021-2022
3.86	3.76	3.82	3.80	3.80	3.83	3.80

Entrance Enrollment

2015-2016	2016-2017	2017-2018	2018-2019	2019-2020	2020-2021	2021-2022
58	68	63	72	71	70	72

Total Enrollment

2015	2016	2017	2018	2019	2020	2021	2022
105	183	195	207	217	204	214	232

Scholarships

Started at \$2,000 per year
Currently at \$3,000 per year

Program Graduation Rate 74%

Graduates of the School of Honors have been accepted into numerous graduate schools:

Harvard University, George Washington University, Wake Forest University, West Virginia School of Osteopathic Medicine, University of Louisville School of Medicine, Virginia Polytechnic State University, Baylor University, Missouri State University, Indiana University, Oklahoma State University, Boston University, Brandeis University, University of South Florida, Florida State University, Lake Erie College of Osteopathic Medicine, Brenau University, Southeastern University, Gordon-Cornwell Theological Seminary, Liberty University College of Osteopathic Medicine, Cornell School of Law, Candler School of Theology at Emory University and University of Florida Law School.





2022 Fall Enrollment Summary by Delivery

Undergraduate	New	Returning	Total	Full-Time	Part-Time
SEU Lakeland	773	1,466	2,239	2,183	56
SEU Online	320	340	660	390	270
SEU Sites	879	1,199	2,078	1,671	407
SEU Partnerships	1,169	154	1,323	110	1,213
High School Dual Enrolled	2,009	531	2,540	10	2,530
Total New Freshmen	1,132	0	1,132	1,057	75
Total Undergraduates	5,150	3,690	8,840	4,364	4,476



Degree Level	New	Returning	Total	Full-Time	Part-Time
Masters					
CERTG Dyslexia Education	0	1	1	0	1
CERTG Human Services Administration	1	0	1	0	1
CERTG Organizational Leadership	1	1	2	0	2
MA Art of Design Management	9	10	19	18	1
MA Biblical Studies	6	19	25	4	21
MA Classical Studies: History	13	60	73	0	73
MA Elementary Education	1	0	1	0	1
MA Family Ministry	4	8	12	4	8
MA Global Ministry Design	6	25	31	0	31
MA Human Services	3	10	13	4	9
MA International Community Development	2	9	11	4	7
MA International Family Ministry	0	8	8	0	8
MA Leadership	19	47	66	22	44
MA Ministerial Leadership	46	62	108	34	74
MA Theological Studies	6	16	22	7	15
MBA Master of Business Administration	46	101	147	83	64
MDiv Master of Divinity	30	84	114	49	65
MEd Educational Leadership	9	29	38	5	33
MEd Educational Therapy	2	13	15	4	11
MEd Elementary Education	3	6	9	0	9
MEd Exceptional Student Education	1	21	22	8	14
MEd Literacy Education	2	12	14	2	12
MEd Teaching English to Speakers of Other Languages	1	11	12	4	8
MS Kinesiology	14	24	38	14	24
MS Nursing	4	0	4	0	4
MS Pastoral Care & Counseling	23	23	46	17	29
MS Professional Counseling	25	0	25	18	7
MSW Master of Social Work	37	22	59	57	2
ND Non-Degree Seeking	3	1	4	0	4
Doctorate					
DMin Doctor of Ministry	11	32	43	26	17
DMiss Doctor of Missiology	23	0	23	0	23
DSL Strategic Leadership	7	29	36	27	9
EdD Education	1	98	99	46	53
PhD Education	0	3	3	1	2
PhD Organizational Leadership	6	54	60	27	33
Total Graduates	365	839	1,204	485	719
Total University Enrollment	5,515	4,529	10,044	4,849	5,195





Enrollment by Major

Barnett College of Ministry & Theology

Ministry & Theology

ASSOCIATES

ACM Christian Ministry.....	103
AML Ministerial Leadership.....	199
AWM Worship Ministries.....	13

BACHELORS

BA Intercultural Studies.....	1
BA Multidisciplinary Studies.....	30
BA/BS Biblical Studies.....	21
BA/BS Worship Ministries.....	26
BS Children, Youth, & Family Ministries.....	28
BS Christian Ministry.....	66
BS Ministerial Leadership.....	952
BS Ministry: Biblical Studies.....	26

BS Ministry: Children, Youth, & Family.....	27
BS Ministry: Pastoral Ministry.....	23
BS Practical Ministries.....	39
BS Worship Ministries.....	33

CERTIFICATE UNDERGRAD

Orange Family Ministry.....	1
-----------------------------	---

The School of Divinity

MASTERS

MA Biblical Studies.....	25
MA Family Ministry.....	12
MA International Family Ministry.....	8
MA Ministerial Leadership.....	109
MA Theological Studies.....	22
MDIV Master of Divinity.....	113



DOCTORATE

DMIN Doctor of Ministry.....

43

The Bob & Hazel Hoskins School of Missions

BACHELORS

BA Intercultural Studies.....

7

BS Ministerial Leadership.....

12

MASTERS

MA Global Ministry Design.....

31

DOCTORATE

DMISS Doctor of Missiology.....

23

College of Education

Educator Preparation and Leadership, Undergrad

ASSOCIATES

AA Education.....

9

BACHELORS

BS Early Childhood Education.....

29

BS Elementary Education.....

92

BS Global Education Studies.....

32

BS Secondary Biology.....

2

BS Secondary English.....

12

BS Secondary Mathematics.....

8

BS Secondary Social Sciences.....

15

BS/MEd Exceptional Student Education.....

13

Educator Preparation and Leadership, Graduate

MASTERS

MEd Educational Leadership.....

38

MEd Educational Therapy.....

15

MEd Elementary Education.....

10

MEd Exceptional Student Education.....

22

MEd Literacy Education.....

14

MEd Teaching English to Speakers of Other

Languages.....

12

DOCTORATE

EdD Curriculum & Instruction.....

10

EdD Doctor of Education.....

80

EdD Organizational Leadership.....

9

PhD Education.....

3

CERTIFICATE - GRADUATE

Dyslexia Education.....

1

LINK

CERTIFICATE - UNDERGRAD

Comp. Post. Sec. Transition.....

11

College of Natural & Health Sciences

Kinesiology

BACHELORS

BS Kinesiology.....

163



MASTERS

MS Kinesiology..... 38

Mathematics

BACHELORS

BS Mathematics..... 19

BS Biochemistry..... 12

BS Biology..... 139

BS Communication Sciences & Disorders..... 25

BS General Biology..... 6

BS Health Science & Business..... 4

Nursing

BACHELORS

BS Nursing..... 212

MASTERS

MS Nursing..... 4

College of Social Sciences & Humanities

Counseling, Psychology, and Human Services

BACHELORS

BA Humanitarian Compassion..... 9

BS Human Services..... 42

BS Interdisciplinary Studies..... 5

BS Psychology..... 412

MASTERS

MA Human Services..... 13

MA International Community Development..... 11

MS Pastoral Care & Counseling..... 46

MS Professional Counseling..... 25

CERTIFICATE - GRADUATE

Human Services Administration..... 1

Humanities & Foundational Core

ASSOCIATES

AA General Education..... 176

BACHELORS

BA English..... 10

BA English & Intercultural Studies..... 1

BA Historical & Literary Studies..... 7

BA Language, Culture, & Trade..... 9

BA/BS General Education..... 22

BA/BS General Studies..... 15

BA/BS History..... 7

BFA Creative Writing..... 17

BS Political Science..... 17

BS Undeclared..... 20

Social Work and Criminal Justice

BACHELORS

BS Criminal Justice..... 115

BSW Social Work..... 86



MASTERS

MSW Master of Social Work..... 59

**Jannetides College of Business,
Communication & Leadership**

Business

BACHELORS

BBA Business Administration..... 167
BS Accounting..... 32
BS Business & Professional Leadership..... 166
BS Business Studies..... 84
BS Finance..... 35
BS International Business..... 24
BS Legal Studies..... 21
BS Management..... 75
BS Marketing..... 41

Communication, Arts, and Design

BACHELORS

BA Visual Arts..... 12
BA/BS Broadcasting..... 13
BA/BS Communication with Concentration..... 86

BA/BS Digital Journalism..... 6
BA/BS Film Production..... 48
BA/BS Graphic Design..... 62
BA/BS Media Ministry..... 3
BA/BS Public Relations..... 9
BS Communication & Mass Media..... 100
BS Digital Design & Production..... 6
BS Digital Media & Design..... 95

MASTERS

MA Art of Design Management..... 19

Graduate Studies

MASTERS

MBA Master of Business Administration..... 145

DOCTORATE

DSL Strategic Leadership..... 36

Professional Studies

ASSOCIATES

AAS Professional Pilot..... 1



BACHELORS

BS Aviation Management: Professional Pilot.....	31
BS Business & Professional Leadership: Professional Pilot.....	4
BS Organizational Leadership.....	163
BS Sport Management.....	76
BS Tourism & Hospitality Management.....	26

MASTERS

MA Leadership.....	68
--------------------	----

DOCTORATE

PhD Organizational Leadership.....	60
------------------------------------	----

CERTIFICATE - GRADUATE

Organizational Leadership.....	2
--------------------------------	---

School of Music

Music

BACHELORS

BA Music.....	11
BM Commercial Music.....	17
BM Music Performance.....	6
BME Music Education.....	26
BS Church Music.....	2
BS Commercial Music.....	17
BS Worship Studies.....	18

Steelman Library

Classical Studies

ASSOCIATES

AA General Studies.....	3
-------------------------	---

MASTERS

MA Classical Studies.....	73
---------------------------	----

NON-DEGREE - UG

Dual Enrolled: Classical Conversations.....	1,118
---	-------

Special Programs/Non-Degree

NON-DEGREE - UG

Dual Enrolled.....	2,780
--------------------	-------

Non-Degree Seeking.....	114
-------------------------	-----

NON-DEGREE - GR

Non-Degree Seeking.....	4
-------------------------	---





Undergraduate Totals

Barnett College of Ministry & Theology.....	1,616
College of Education.....	222
College of Natural & Health Sciences.....	579
College of Social Sciences & Humanities.....	967
Jannetides College of Business, Communication & Leadership.....	1,373
School of Music.....	96
Special Programs/Non-Degree.....	2,894
Steelman Library.....	1,121
Total Undergraduate Students.....	8,840

Graduate Totals

Barnett College of Ministry & Theology.....	386
College of Education.....	214
College of Natural & Health Sciences.....	42
College of Social Sciences & Humanities.....	155
Jannetides College of Business, Communication & Leadership.....	330
Special Programs/Non-Degree.....	4
Steelman Library.....	73
Total Graduate Students.....	1,204
Total University Enrollment.....	10,044

Due to some students having more than one major, department totals will not add up to the totals provided. Undergraduate and graduate totals provided are unduplicated student counts.

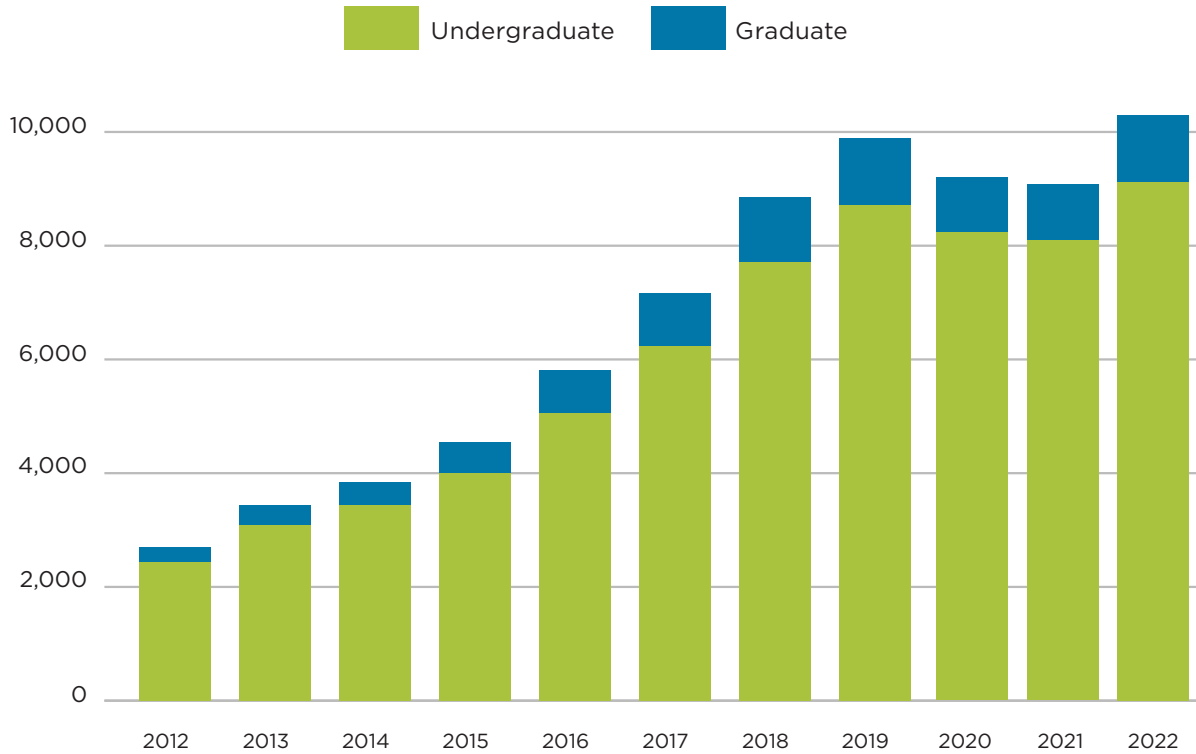




Total Enrollment, 2012-2022

	2012	2013	2014	2015	2016	2017	2018	2019	2020	2021	2022
Undergraduate	2,448	3,083	3,436	3,996	5,054	6,240	7,708	8,717	8,312	8,118	8,840
Graduate	255	351	398	542	750	923	1,051	1,177	1,234	1,247	1,204
Total	2,703	3,434	3,834	4,538	5,804	7,163	8,759	9,894	9,546	9,365	10,044





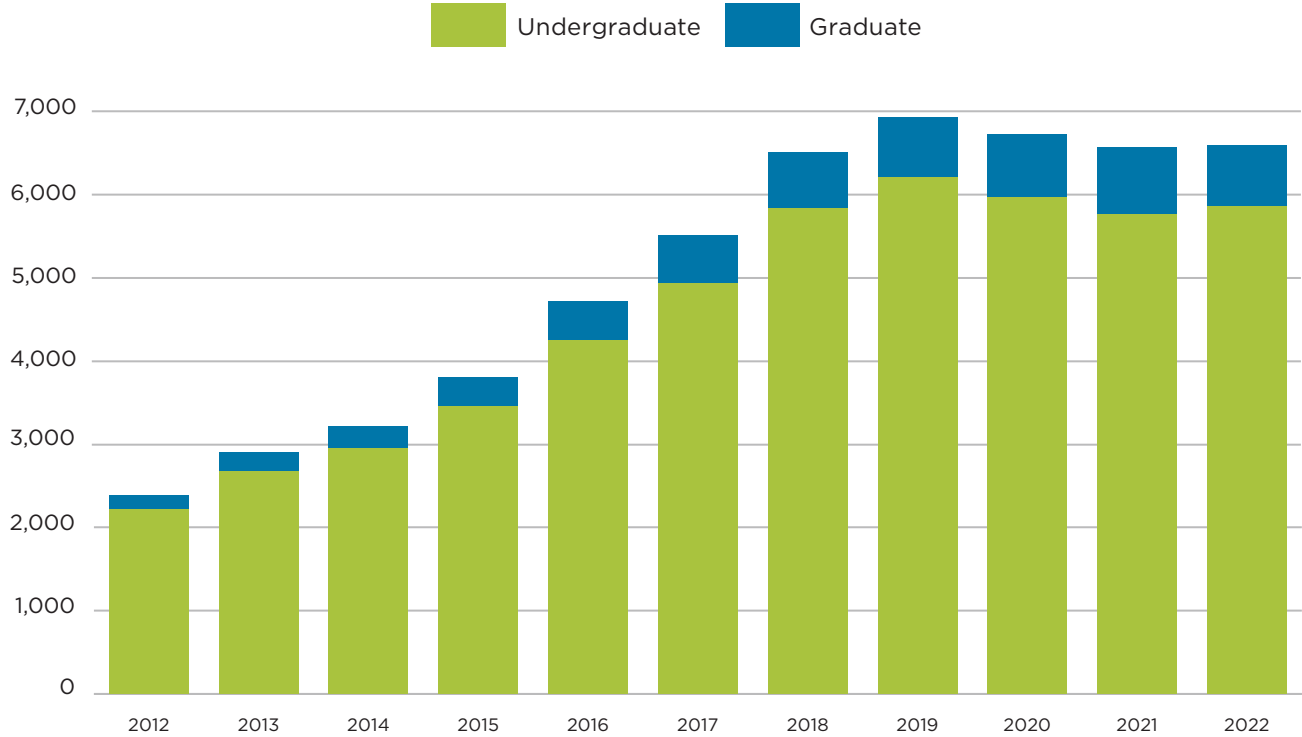


Full-Time Equivalency Enrollment, 2012-2022

	2012	2013	2014	2015	2016	2017	2018	2019	2020	2021	2022
Undergraduate	2,220	2,676	2,955	3,455	4,251	4,932	5,833	6,209	5,962	5,764	5,855
Graduate	156	224	260	343	459	567	660	715	752	792	724
Total	2,376	2,901	3,215	3,798	4,710	5,499	6,493	6,924	6,714	6,556	6,579

Full-time equivalency: Three part-time students equal one full-time equivalent student.



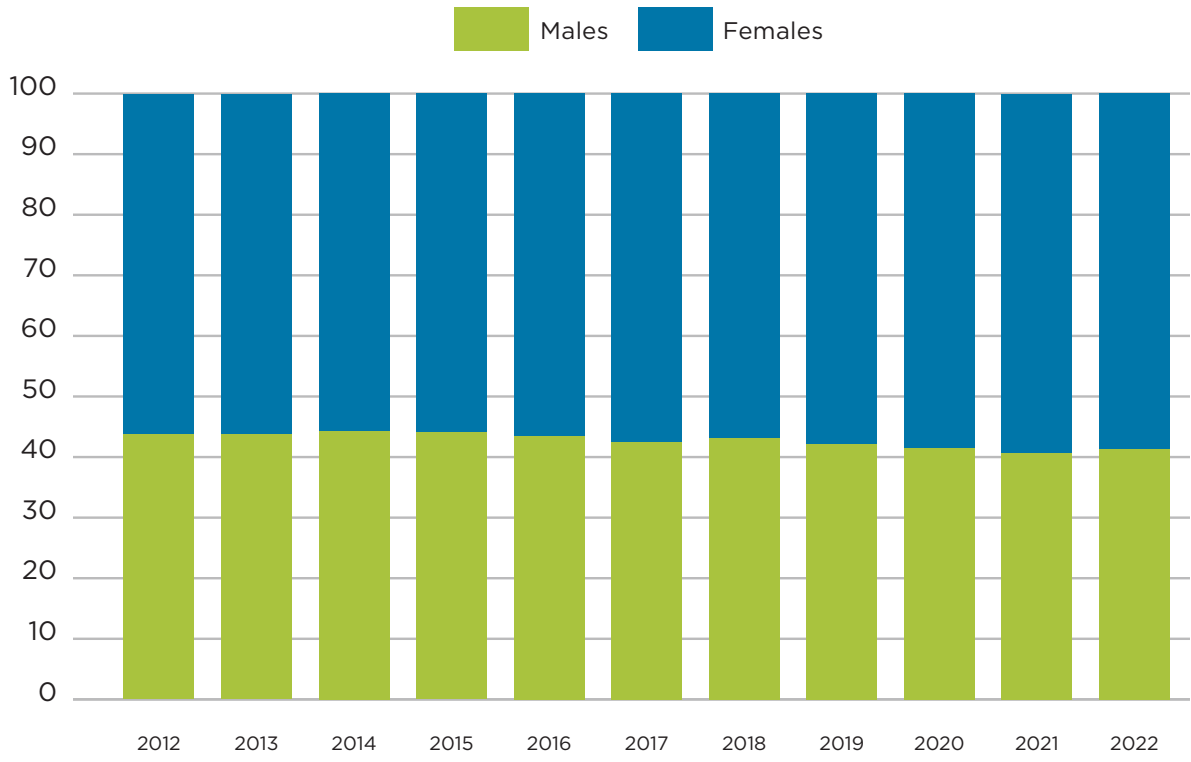




Enrollment by Gender, 2012-2022

	2012	2013	2014	2015	2016	2017	2018	2019	2020	2021	2022
Males	1,186	1,512	1,677	1,972	2,458	3,078	3,685	4,108	3,900	3,869	4,033
Percentage of Males	43.9%	44.3%	44.2%	43.5%	42.5%	43.2%	42.1%	41.5%	40.9%	41.3%	40.2%
Females	1,517	1,898	2,118	2,561	3,324	4,044	5,071	5,786	5,645	5,491	6,009
Percentage of Females	56.1%	55.7%	55.8%	56.5%	57.5%	56.8%	57.9%	58.5%	59.1%	58.7%	59.8%





Enrollment by Race & Ethnicity, 2015-2022

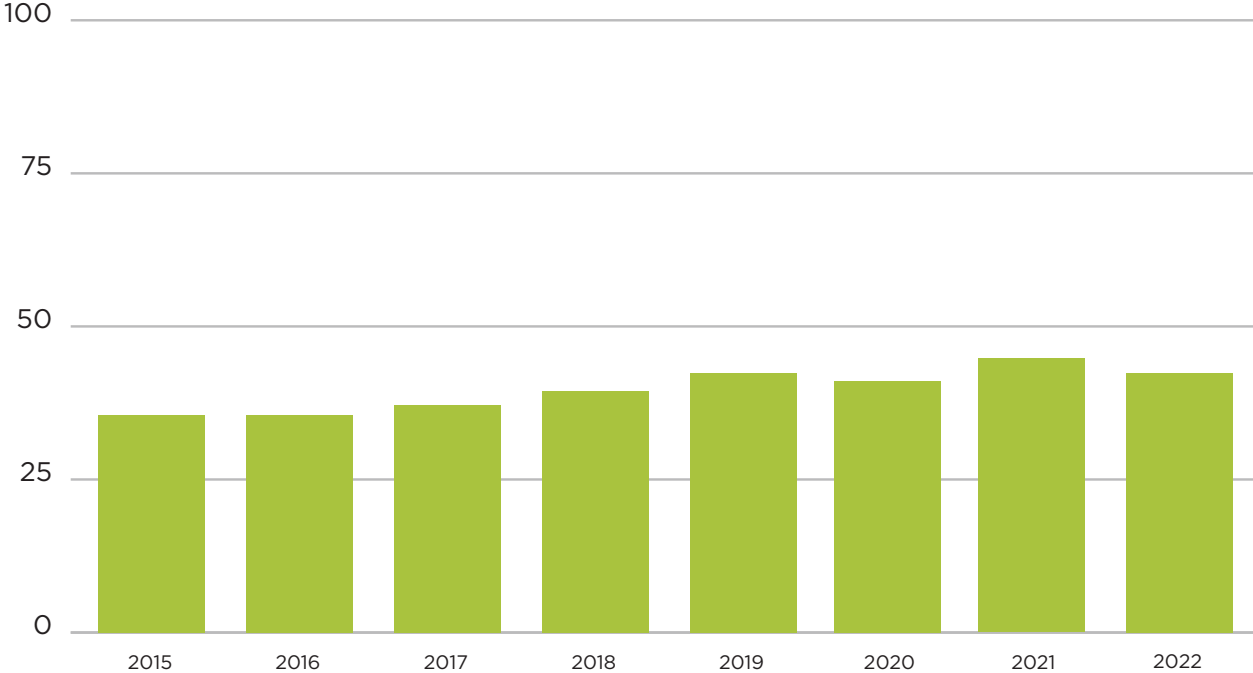
Racial/Ethnic Group	2015	2016	2017	2018	2019	2020	2021	2022
Nonresident Alien	72	105	93	106	136	128	197	1,125
Black or African-American	631	858	971	1,164	1,363	1,209	1,143	1,088
American Indian/Alaska Native	14	23	31	42	48	46	67	67
Asian [†]	75	92	124	153	185	194	181	181
Hawaiian/Pacific Islander [†]	21	30	33	37	35	36	33	34
Hispanics of Any Race	754	1,056	1,274	1,787	2,135	2,070	2,164	2,009
White	2,733	3,393	4,301	5,085	5,483	5,374	5,102	4,994
Two or More Races [†]	12	3	4	131	278	327	306	317
Race/Ethnicity Unknown	226	198	332	254	231	162	172	111
Ethnic Minority Percentage*	35.5%	35.5%	37.1%	39.5%	42.4%	41.9%	43.3%	42.5%

[†] Prior to 2010, race and ethnicity was reported under the old categories which combined Asian and Hawaiian/Pacific Island groups and did not include Two or More Races.

*Nonresident Alien and Race/Ethnicity Unknown categories are excluded from this calculation.



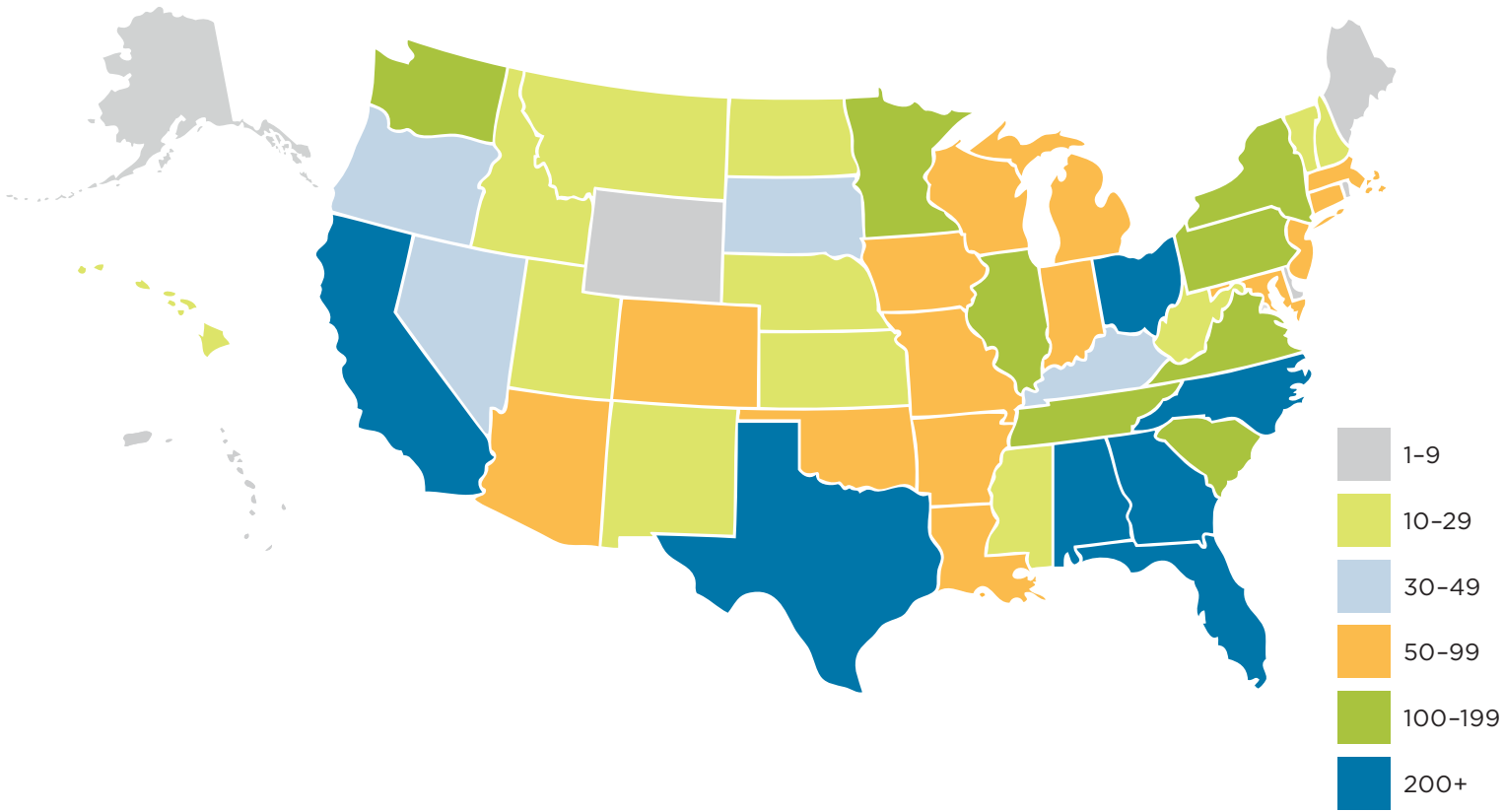
Ethnic Minority Percentage



Enrollment by State/U.S. Territory

State/Territory	Enrolled	State/Territory	Enrolled	State/Territory	Enrolled
Alabama	200	Iowa	50	North Dakota	22
Alaska	7	Kansas	13	Ohio	258
American Samoa	1	Kentucky	31	Oklahoma	57
Arizona	68	Louisiana	70	Oregon	42
Arkansas	51	Maine	6	Pennsylvania	133
Armed Forces Europe	5	Maryland	94	Puerto Rico	6
Armed Forces Pacific	5	Massachusetts	55	Rhode Island	4
California	340	Michigan	98	South Carolina	110
Colorado	77	Minnesota	104	South Dakota	44
Connecticut	50	Mississippi	26	Tennessee	110
Delaware	7	Missouri	87	Texas	405
District of Columbia	5	Montana	10	Utah	14
Florida	5,508	Nebraska	22	Vermont	11
Georgia	232	Nevada	30	Virgin Islands	3
Guam	2	New Hampshire	17	Virginia	146
Hawaii	17	New Jersey	95	Washington	196
Idaho	20	New Mexico	14	West Virginia	17
Illinois	169	New York	113	Wisconsin	54
Indiana	98	North Carolina	216	Wyoming	4

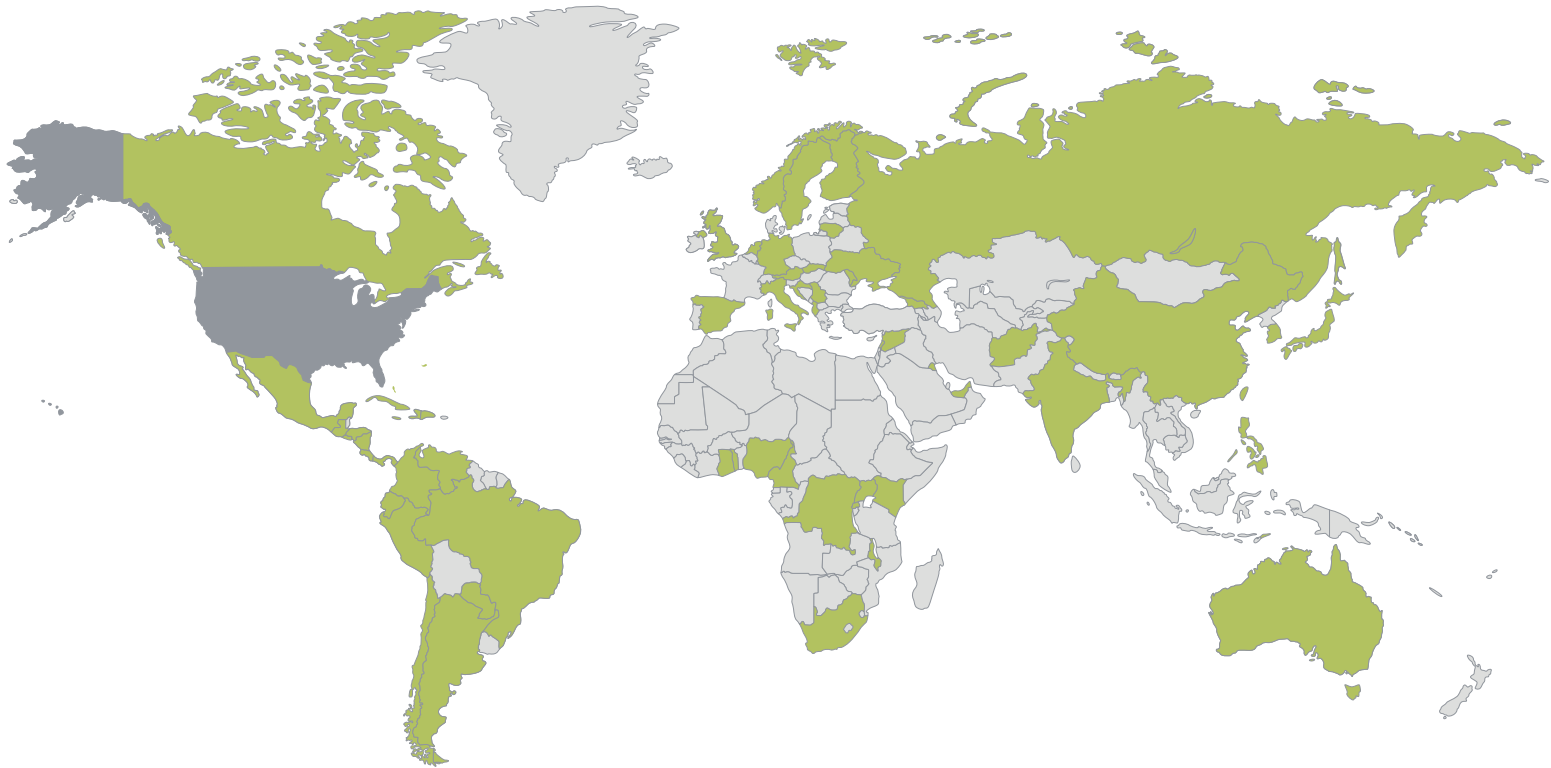




International Enrollment

Nation	Enrolled	Nation	Enrolled	Nation	Enrolled
(retired) Netherlands Antilles	1	Ghana	2	Serbia	1
Afghanistan	2	Guatemala	4	Singapore	1
Albania	1	Haiti	1	Slovakia	1
Anguilla	1	Honduras	6	South Africa	3
Argentina	3	India	3	South Korea	1
Australia	4	Italy	7	Spain	10
Austria	1	Jamaica	6	Sweden	1
Bahamas	13	Japan	1	Syrian Arab Republic	1
Bermuda	2	Kenya	3	Togo	1
Brazil	19	Kuwait	1	Turks And Caicos Islands	1
Cameroon	1	Lebanon	1	Uganda	64
Canada	13	Lithuania	1	Ukraine	1
Chile	1	Malawi	1	United Arab Emirates	2
China	7	Mexico	3	United Kingdom of Great Britain and Northern Ireland	10
Colombia	10	Moldova	2	Venezuela	3
Congo	2	Netherlands	2		
Croatia	1	Nicaragua	2		
Cuba	2	Nigeria	1		
Curaçao	1	Norway	1		
Democratic Republic of Congo	1	Panama	1		
Dominican Republic	2	Paraguay	3		
Ecuador	2	Peru	7		
El Salvador	1	Philippines	4	Total International	260
Finland	1	Russian Federation	2	Percentage of Total	2.7%
Germany	1	Rwanda	1	Total Countries	65

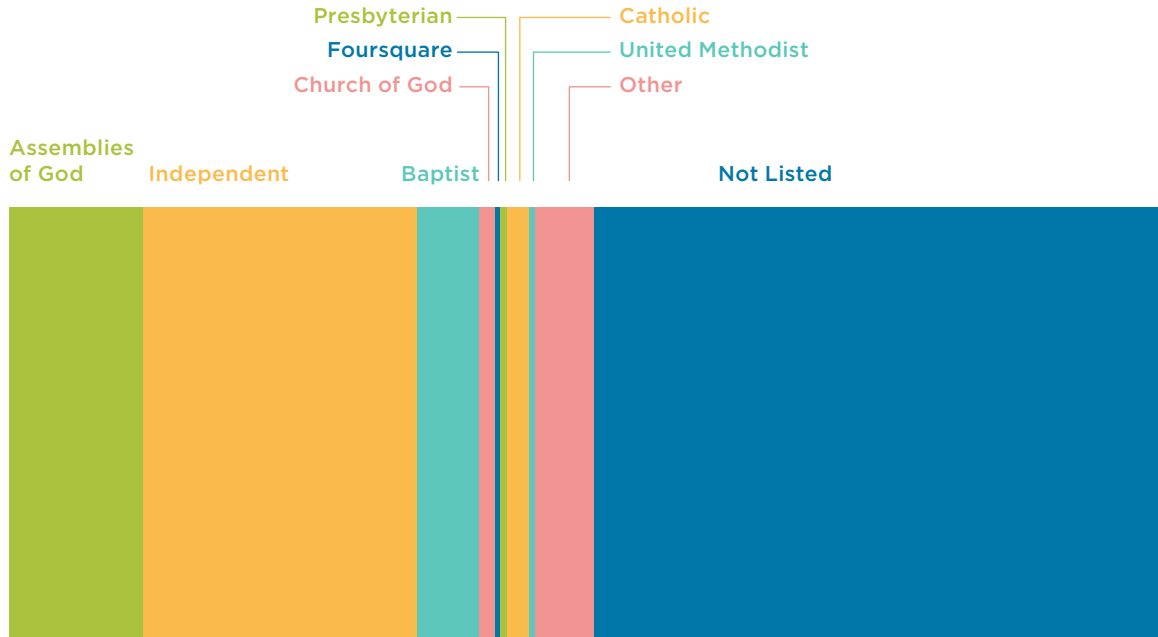




Enrollment by Denomination

Denomination	2019		2020		2021		2022	
	Number	Percent	Number	Percent	Number	Percent	Number	Percent
Assemblies of God	1,472	14.9%	1,400	14.7%	1,299	13.9%	1,168	11.6%
Independent	2,509	25.4%	2,633	27.6%	2,456	26.2%	2,376	23.7%
Baptist	692	7.0%	673	7.1%	612	6.5%	541	5.4%
Church of God	143	1.4%	140	1.5%	136	1.5%	129	1.3%
Foursquare	89	0.9%	75	0.8%	63	0.7%	52	0.5%
Presbyterian	81	0.8%	93	1.0%	68	0.7%	63	0.6%
Catholic	211	2.1%	228	2.4%	195	2.1%	192	1.9%
United Methodist	76	0.8%	92	1.0%	78	0.8%	49	0.5%
Other	440	4.4%	482	5.0%	508	5.4%	509	5.1%
Not Listed	4,181	42.3%	3,730	39.1%	3,950	42.2%	4,965	49.4%





Enrollment by Assemblies of God District

Sponsoring Districts	2019	2020	2021	2022	Top Five Other Districts	2019	2020	2021	2022
Alabama	23	11	2	0	Northern California/Nevada	36	26	18	7
Appalachian	0	1	0	0	Pennsylvania/Delaware	21	17	5	4
Florida Multicultural	22	11	8	4	New Jersey	17	11	6	1
Georgia	29	14	1	2	Potomac	11	5	3	1
North Carolina	39	24	14	4	New York	12	4	1	2
Peninsular Florida	277	170	101	35					
South Carolina	29	18	4	2					
Tennessee	7	7	5	1					
West Florida	9	2	0	0					
					Other/Unknown Districts	940	1,079	1,131	1,105
					Total AG Enrollment	1,472	1,400	1,299	1,168





Faculty Division & Rank

Division	Professor	Associate Professor	Assistant Professor	Instructor	Lecturer	Grand Total
Barnett College of Ministry & Theology	11	4	2	0	1	18
College of Education	5	6	6	0	0	17
College of Natural & Health Sciences	6	7	9	2	1	25
College of Social Sciences & Humanities	7	13	7	2	0	29
Jannetides College of Business, Communication & Leadership	9	8	5	0	0	22
School of Honors	0	1	1	0	0	2
School of Music	1	5	4	0	0	10
Steelman Library	0	0	2	1	0	3
Administration & Ranked Staff	11	8	2	0	0	21
Grand Total	50	52	38	5	2	147



Division	Professor	Associate Professor	Assistant Professor	Instructor	Lecturer	Total
Instructional Faculty	39	44	36	5	2	126
Percentage of Instructional Faculty	31.0%	34.9%	28.6%	4.0%	1.6%	
Total Faculty	50	52	38	5	2	147
Percentage of Total Faculty	34.0%	35.4%	25.9%	3.4%	1.4%	
Instructional Faculty with Terminal Degrees	38	33	14	0	0	85
Percentage of Instructional Faculty with Terminal Degrees	44.7%	38.8%	16.5%	0%	0%	
Total Faculty with Terminal Degrees	44	37	14	0	0	95
Percentage of Total Faculty with Terminal Degrees	46.3%	38.9%	14.7%	0%	0%	

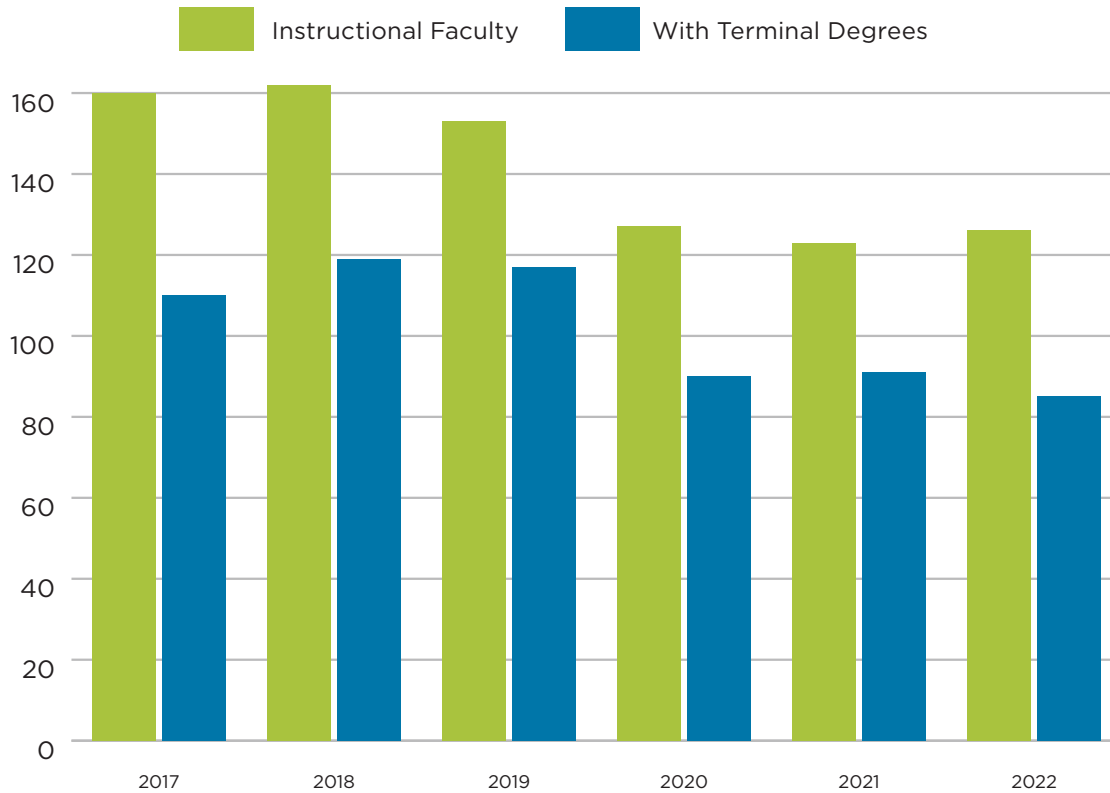
PERCENTAGE OF TOTAL FACULTY WITH TERMINAL DEGREES



Instructional Faculty, 2017-2021

College/Department	2017	2018	2019	2020	2021	2022
Barnett College of Ministry & Theology	26	25	22	14	22	18
College of Arts & Media	32	34	32	27	29	-
College of Behavioral & Social Sciences	17	19	18	16	16	-
College of Education	31	30	26	23	24	17
College of Natural & Health Sciences	25	24	24	23	20	25
College of Social Sciences & Humanities	-	-	-	-	-	29
College of Unrestricted Education	15	11	13	12	-	-
Jannetides College of Business, Communication & Leadership	14	18	17	11	11	22
School of Honors	-	1	1	1	1	2
School of Music	-	-	-	-	-	10
Steelman Library	-	-	-	-	-	3
Total Instructional Faculty	160	162	153	127	123	126
Instructional Faculty with Terminal Degrees	109	119	117	90	91	85
Percentage of Instructional Faculty with Terminal Degrees	68.1%	73.5%	76.5%	70.9%	71.1%	67.5%





Instructional Faculty Demographics

Age	Number	Percent
Under 30	6	4.8%
30-39	21	16.7%
40-49	39	31.0%
50-59	38	30.2%
60-69	16	12.7%
70+	6	4.8%
Age		
25th %		40
Mean Age		49
75th %		58

Gender	Number	Percent
Male	66	52.4%
Female	60	47.6%
Ethnicity		
Black or African-American	9	7.1%
American Indian/Alaska Native	1	0.8%
Asian	1	0.8%
Hawaiian/Pacific Islander	4	3.2%
Hispanic (Any Race)	5	4.0%
White	104	82.5%
Two or More Races	1	0.8%
Race/Ethnicity Unknown	1	0.8%
Ethnic Minorities:		16.7%





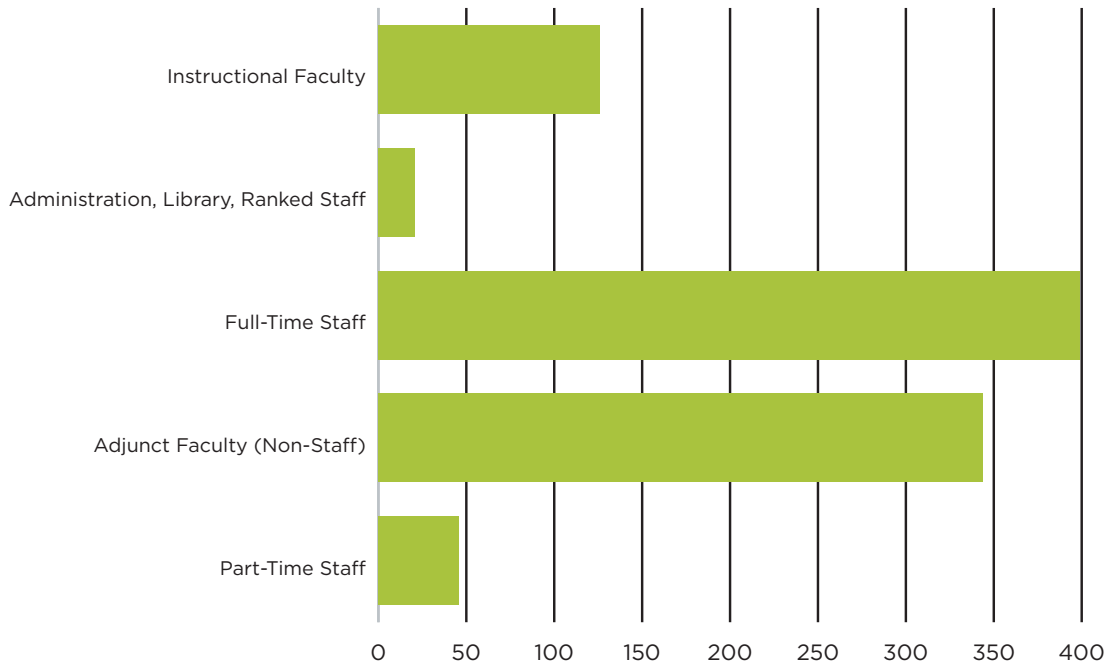
Student-to-Faculty Ratio

2012	2013	2014	2015	2016	2017	2018	2019	2020	2021	2022
18.9 to 1	19.5 to 1	18.4 to 1	19.8 to 1	20.7 to 1	20 to 1	20.8 to 1	23.4 to 1	28.9 to 1	26.5 to 1	27.3 to 1

Faculty & Staff

Category	Total
Instructional Faculty	126
Administration, Library & Ranked Staff	21
Full-Time Staff	399
Administrative Support Workers	86
Craft Workers	9
First/Mid-Level Officials and Managers	89
Laborers and Helpers	4
Professionals	149
Sales Workers	2
Service Workers	49
Technicians	11
Total Full-Time Employees	546
Adjunct Faculty (Non-Staff)	344
Part-Time Staff	46
Total Employees	936







STEELEMAN
LIBRARY

2022 Fall Undergraduate New Students by Delivery Type

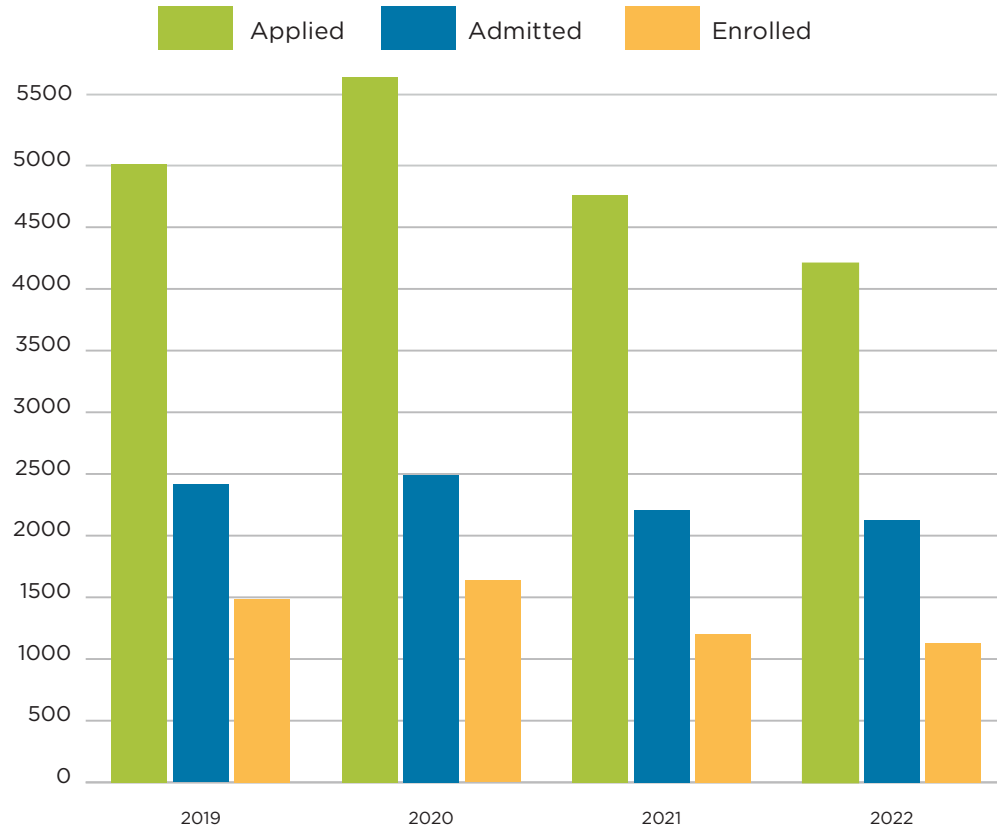
	FTIC	Transfers	Re-Admits	Status Change	Non Degree	Dual Enrolled	Grand Total
SEU Lakeland	587	141	9	21	2	9	769
SEU Online	56	74	39	90	1	59	319
SEU Sites	471	188	23	46	55	94	877
SEU Partnerships	18	4	0	0	59	1,080	1,161
High School Dual Enrolled	0	0	0	0	0	2,009	2,009
Grand Total	1,132	407	71	157	117	3,251	5,135



Applications for Freshman Admission

		Applied	Admitted	Percent Admitted	Enrolled	Percent Admitted Who Enrolled
2019	Male	1,980	1,012	51.1%	646	63.8%
	Female	3,034	1,403	46.2%	842	60.0%
	Total	5,014	2,415	48.2%	1,488	61.6%
2020	Male	2,107	984	46.7%	677	68.8%
	Female	3,610	1,509	41.8%	960	63.6%
	Total	5,717	2,493	43.6%	1,637	65.7%
2021	Male	1,766	876	49.6%	497	56.7%
	Female	2,995	1,331	44.4%	706	53.0%
	Total	4,761	2,207	46.4%	1,203	54.5%
2022	Male	1,609	837	52.0%	453	54.1%
	Female	2,597	1,293	49.8%	676	52.3%
	Total	4,206	2,130	50.6%	1,129	53.0%





SAT, ACT & GPA for Entering Freshmen

	25th Percentile	75th Percentile
SAT Critical Reading	510	630
SAT Math	500	590
SAT Composite	1,020	1,230
ACT Composite	20	27
Average SAT Composite <i>(Reading and Math Only)</i>		1,119
Average ACT Composite		23.6

High School GPA	Percentage
3.75 and higher	41.9%
3.50 to 3.74	12.4%
3.25 to 3.49	10.9%
3.00 to 3.24	8.1%
2.50 to 2.99	9.6%
2.00 to 2.49	3.6%
1.00 to 1.99	2.9%
Below 1.00	0.0%
Average GPA	3.56



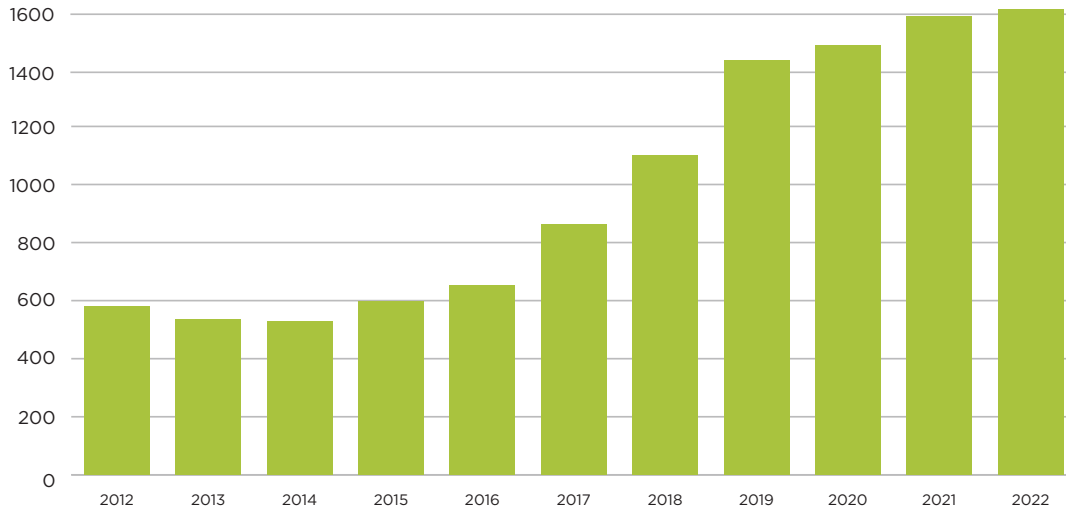
High School GPAs

1.00-1.99 2.00-2.49 2.50-2.99 3.00-3.24 3.25-3.49 3.50-3.74 3.75+



Completions

	2012	2013	2014	2015	2016	2017	2018	2019	2020	2021	2022
Male	207	240	206	234	277	325	412	545	527	575	616
Female	372	296	322	363	376	537	688	883	952	1,005	987
Total	579	536	528	597	653	862	1,100	1,428	1,479	1,580	1,603



*These numbers are an unduplicated student count.

Completions, 2021-2022

By Gender	Certificate (UG)	Associate	Bachelor's	Master's	Certificate (GR)	Doctoral	Total	Percent
Male	4	71	370	146	3	25	619	37.9%
Female	19	113	562	275	17	28	1,014	62.1%
By Race/Ethnicity								
American Indian or Alaskan Native	0	0	4	1	0	0	5	0.3%
Nonresident Alien	0	0	11	28	6	0	45	2.8%
Black or African-American	0	21	90	54	1	12	178	10.9%
Asian	0	2	15	7	0	1	25	1.5%
Hawaiian/Pacific Islander	0	1	2	2	0	0	5	0.3%
Hispanic (Any Race)	4	27	205	78	1	3	318	19.5%
White	16	128	576	242	11	37	1,010	61.8%
Two or More Races	0	5	21	3	1	0	30	1.8%
Race/Ethnicity Unknown	3	0	8	6	0	0	17	1.0%
Total	23	184	932	421	20	53	1,633	



Completions by College/Department, 2021-2022

Undergraduate	Students	Percentage
Barnett College of Ministry & Theology	400	24.5%
Ministry & Theology	390	23.9%
The Bob & Hazel Hoskins School of Missions	10	0.6%
College of Education	46	2.8%
Educator Preparation and Leadership, Undergrad	46	2.8%
College of Natural & Health Sciences	102	6.2%
Kinesiology	31	1.9%
Mathematics	3	0.2%
Natural Sciences	22	1.3%
Nursing	46	2.8%
College of Social Sciences & Humanities	260	15.9%
Humanities & Foundational Core	105	6.4%
Social Work and Criminal Justice	49	3.0%
Counseling, Psychology, and Human Services	106	6.5%
Jannetides College of Business, Communication & Leadership	303	18.6%
Business	136	8.3%



Completions by College/Department, 2021-2022

Undergraduate	Students	Percentage
Communication, Arts, and Design	97	5.9%
Professional Studies	70	4.3%
School of Music	24	1.5%
Music	24	1.5%
Total	1,135	69.5%

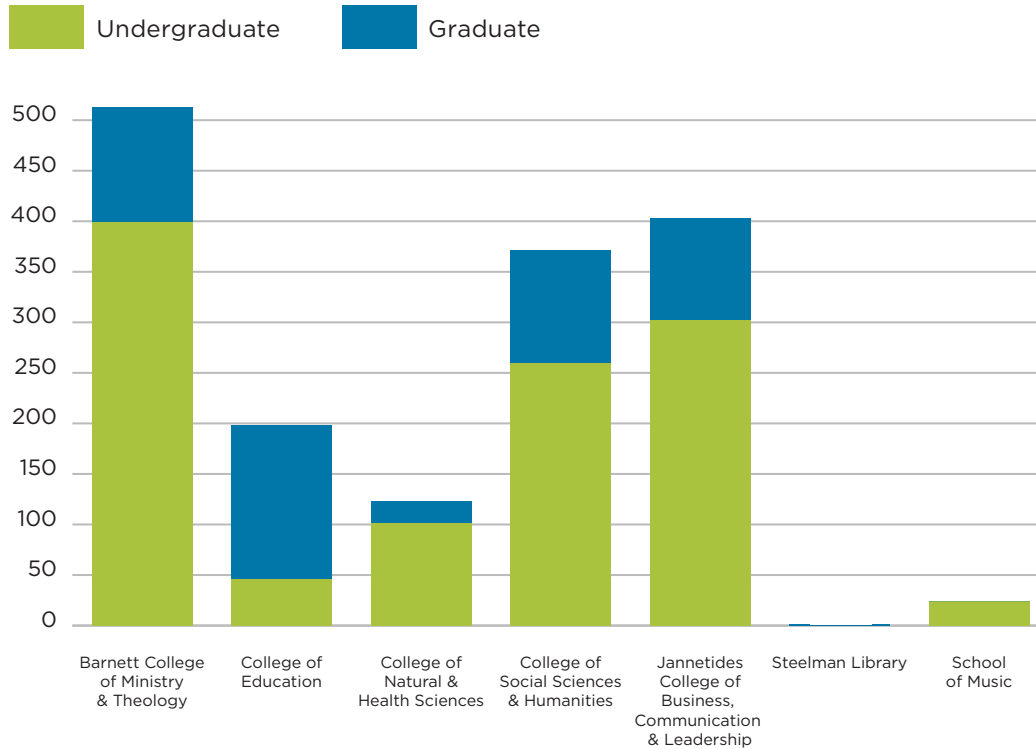


Completions by College/Department, 2021-2022

Graduate	Students	Percentage
Barnett College of Ministry & Theology	113	6.9%
School of Divinity	113	6.9%
College of Education	152	9.3%
LINK	4	0.2%
Educator Preparation and Leadership, Graduate	148	9.1%
College of Natural & Health Sciences	21	1.3%
Kinesiology	21	1.3%
College of Social Sciences & Humanities	111	6.8%
Social Work and Criminal Justice	57	3.5%
Counseling, Psychology, and Human Services	54	3.3%
Jannetides College of Business, Communication & Leadership	100	6.1%
Graduate Studies	62	3.8%
Professional Studies	38	2.3%
Steelman Library	1	0.1%
Classical Studies	1	0.1%
Total	498	30.5%
Grand Total	1,633	

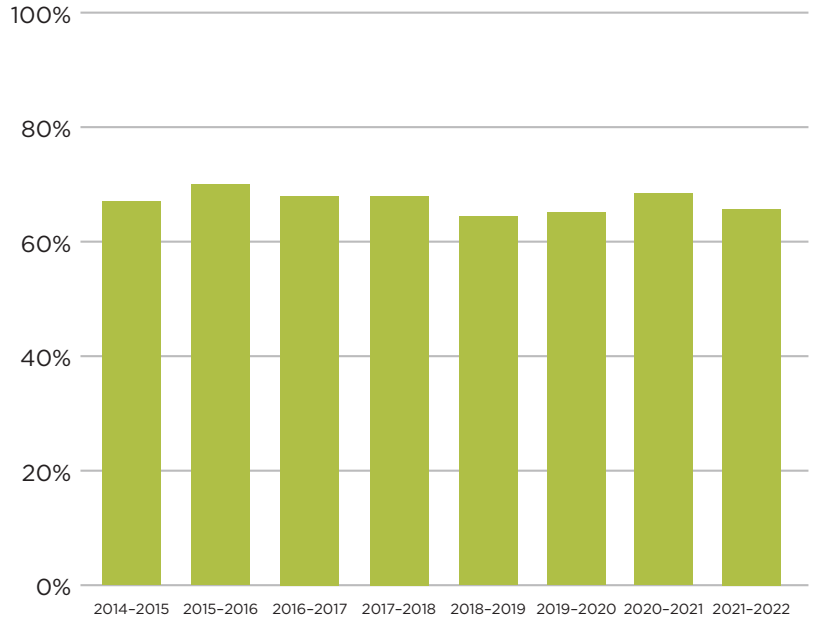


Completions by College/Department, 2021-2022



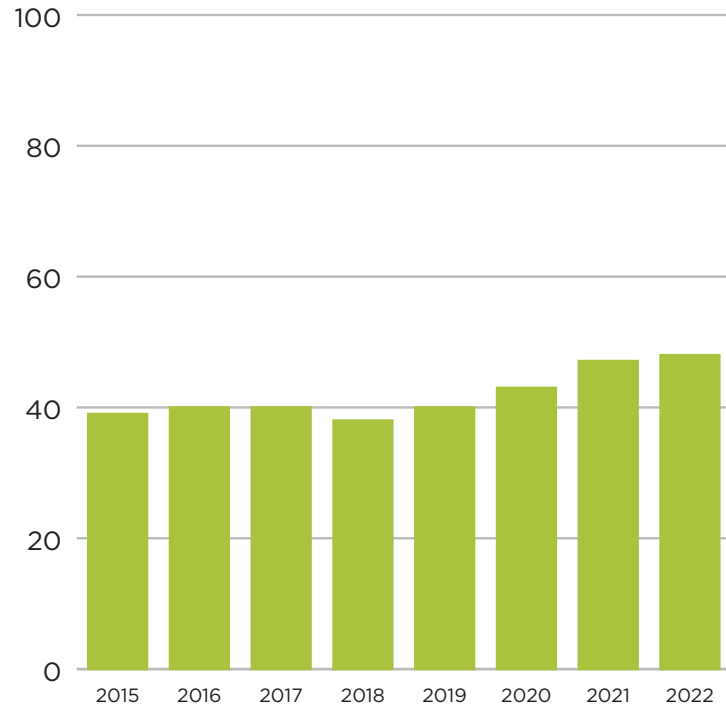
Retention Rates

Freshman Cohort Year	Percent Returned Following Fall	
2014	67%	2015
2015	70%	2016
2016	68%	2017
2017	68%	2018
2018	64.4%	2019
2019	64.9%	2020
2020	68.3%	2021
2021	65.1%	2022



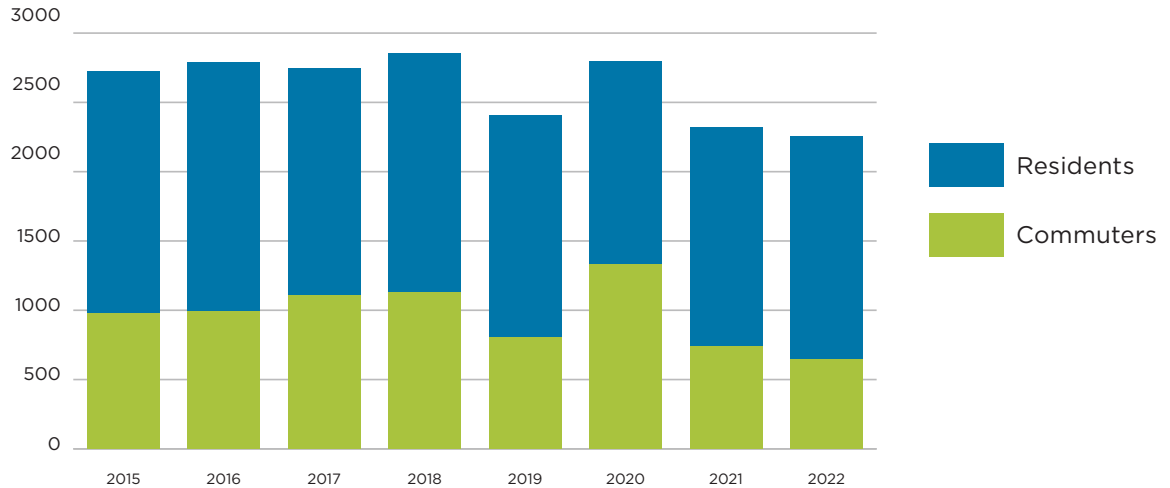
Graduation Rates

Freshman Cohort Year	Graduated Within Six Years	
2009	39%	2015
2010	40%	2016
2011	40%	2017
2012	38%	2018
2013	40%	2019
2014	43.4%	2020
2015	47.1%	2021
2016	48.3%	2022



On-Campus Enrollment

	2015	2016	2017	2018	2019	2020	2021	2022
Commuters	981	995	1,111	1,133	806	1,333	743	650
Residents	1,741	1,792	1,637	1,721	1,615	1,464	1,577	1,609
Total	2,722	2,787	2,748	2,854	2,421	2,797	2,320	2,259



Housing Capacity

Year	Residents	Growth	Capacity	Capacity %
2013	1,443	15.3%	1,474	97.9%
2014	1,550	7.4%	1,449	107.0%
2015	1,729	11.5%	1,434	120.6%
2016	1,792	3.6%	1,843	97.2%
2017	1,637	-8.6%	1,842	88.9%
2018	1,715	4.8%	1,836	93.4%
2019	1,615	-5.8%	1,834	88.1%
2020	1,464	-9.30%	1,699	86.20%
2021	1,577	7.7%	1,699	92.8%
2022	1,609	2%	1,791	89.8%

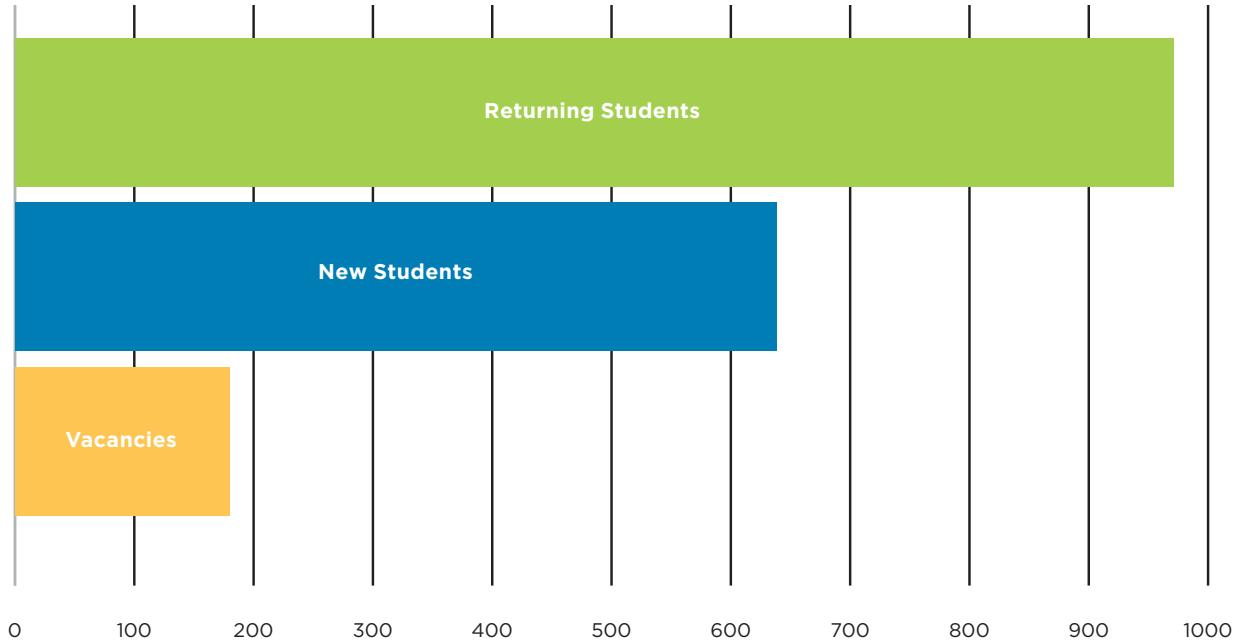


Campus Housing

Residence Hall	Capacity	Returning Students	New Students	Total	Vacancies
Bauer Hall	164	5	158	163	37
Buena Vida West	142	88	53	141	12
Buttercup	9	8	1	9	0
Destino	244	224	21	245	11
South Pointe	39	23	16	39	38
Male Totals	598	348	249	597	98
Aventura	246	210	35	245	10
Bethany Hall	178	11	164	175	3
Buena Vida East	201	104	91	195	11
Buttercup	32	29	3	32	7
Esperanza	246	205	40	245	12
South Pointe	4	2	2	4	11
Valencia	117	62	54	116	28
Female Totals	1,024	623	389	1,012	82
Undergraduate Total	1,622	971	638	1,609	180



Campus Housing





Office of Institutional Research

1000 Longfellow Blvd. | Lakeland, Florida 33801 | 863.667.5408

SEU.edu